

PARTS & INSTALLATION MANUAL HT66 ACCESSORIES

Included in this manual:

OUTRIGGERS, PEDESTALS, & BOOM RESTS

- For HT66 Telescopic Service Crane

VENCO VENTURO INDUSTRIES LLC
12110 BEST PLACE | CINCINNATI, OHIO 45241
800-226-2238



This manual also available online at www.venturo.com.

TABLE OF CONTENTS

HT66KX Accessories (Outriggers, Pedestals, Boom Rests)

SECTION 100

23202	Pedestal & Mounting Dimensions 27656
20420	Adjustable Boom Rest 20381
22642	Front Outrigger 24962-PH & 24962-PHE
22641	Front Outrigger 24962-CD
23210	Single Tube Outrigger 27695
23209	Dual Tube Outrigger 27634

SECTION 200

DESCRIPTION & SPECIFICATIONS

INSTALLATION

22913	Connection Guide (In-compartment)
23015	Connection Guide Expanded (Page 1 of 2)
23014	Connection Guide Expanded (Page 2 of 2)
23218	Single Outrigger w/Short Hyd Legs 27695
23219	Dual Outrigger w/ Short & Long Hyd Legs 27634

SECTION 400

REPLACEMENT PARTS

23222	27636 Hyd. Leg Assy. Replacement Parts for 27634 Outrigger
23221	25084 Hyd. Leg Assy. Replacement Parts for 27695 Outrigger
23212	27695 Single Tube Outrigger Replacement Parts (Page 1 of 2)
23211	27695 Single Tube Outrigger Replacement Parts List (Page 2 of 2)
23213	27634-PHX-LL Dual Tube Outrigger Replacement Parts (Page 1 of 2)
23214	27634-PHX-LL Dual Tube Outrigger Replacement Parts List (Page 2 of 2)



MFG., INC.
CINCINNATI, OHIO

TITLE

TABLE OF CONTENTS

DATE

9-29-10

SECTION

-

SUPERSEDES

HT66KX Accessories

-

23201

SECTION 100

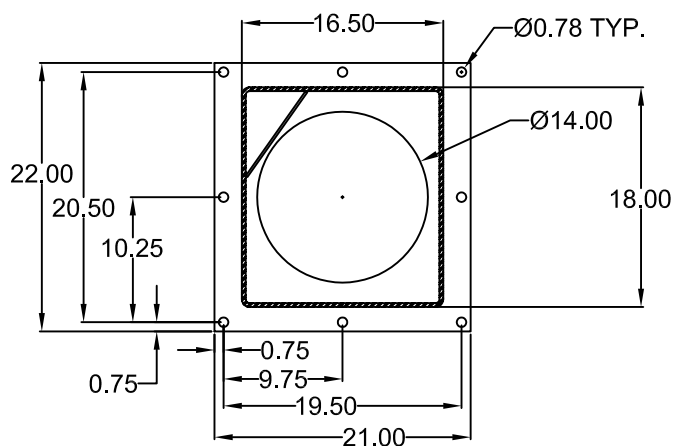
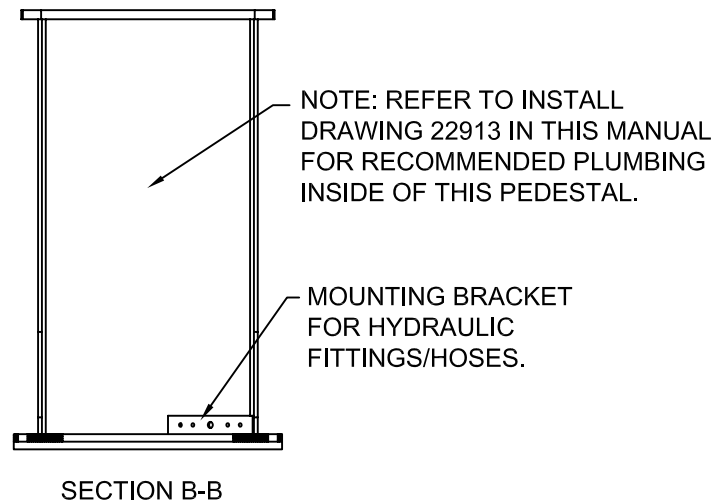
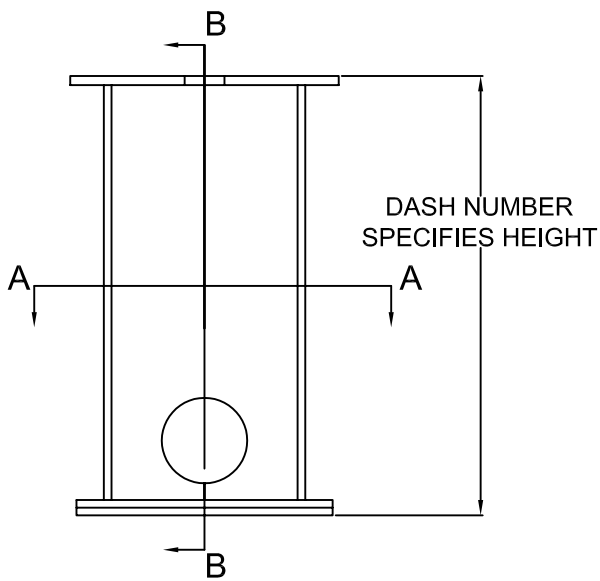
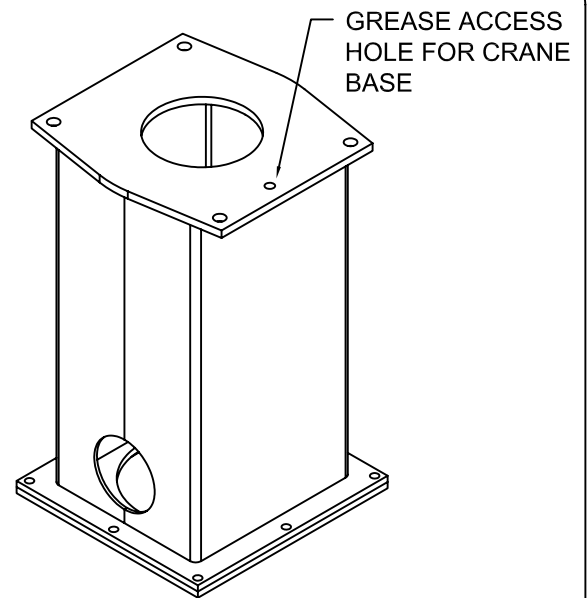
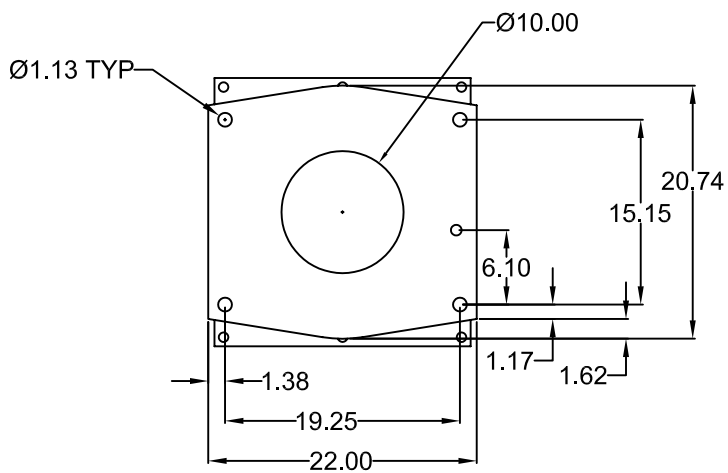
DESCRIPTION

&

SPECIFICATIONS

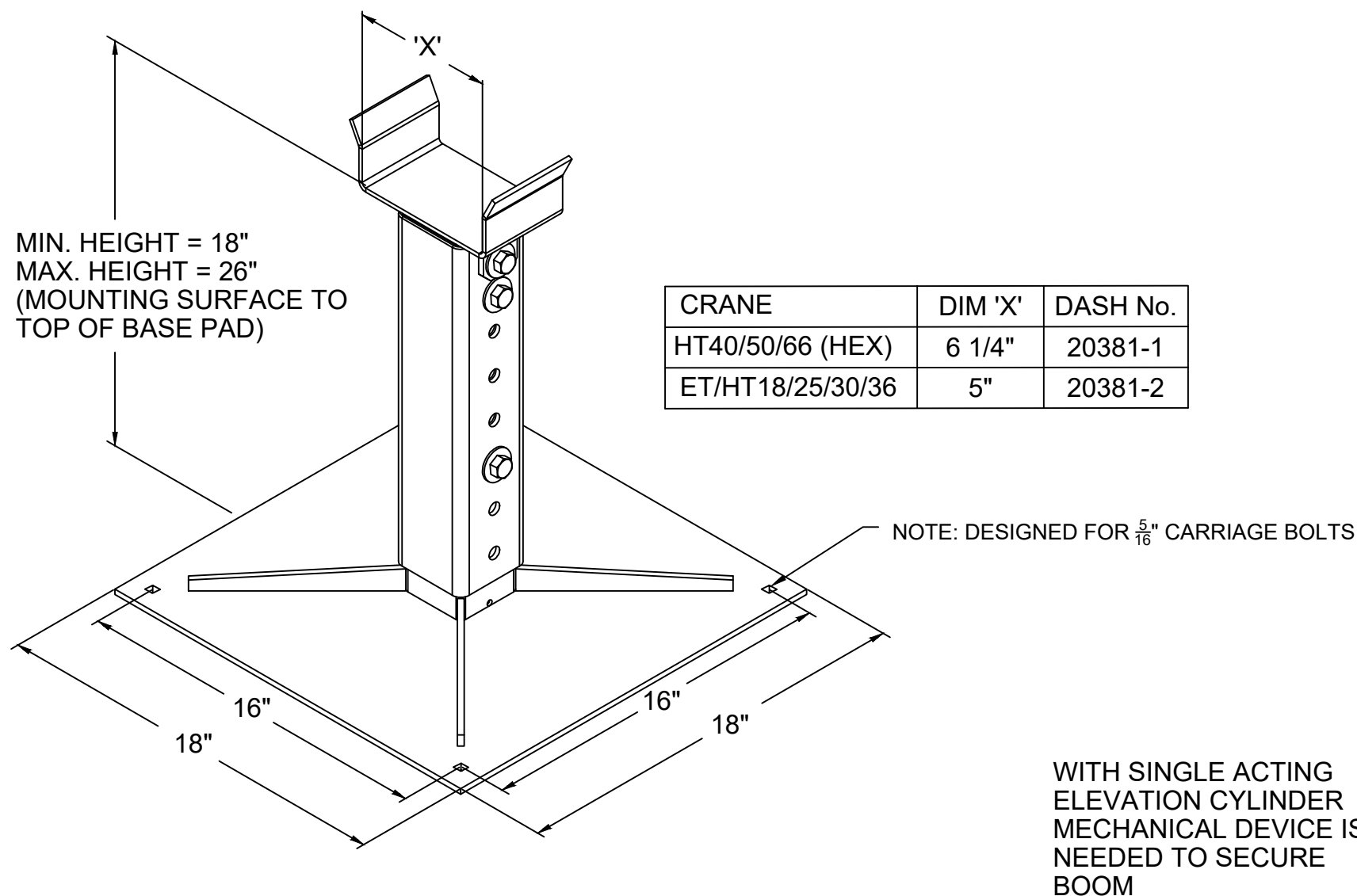


VENCO VENTURO INDUSTRIES LLC
CINCINNATI, OHIO



SECTION A-A
LOWER MOUNTING
PLATE DIMENSIONS

20381 ADJUSTABLE BOOM REST

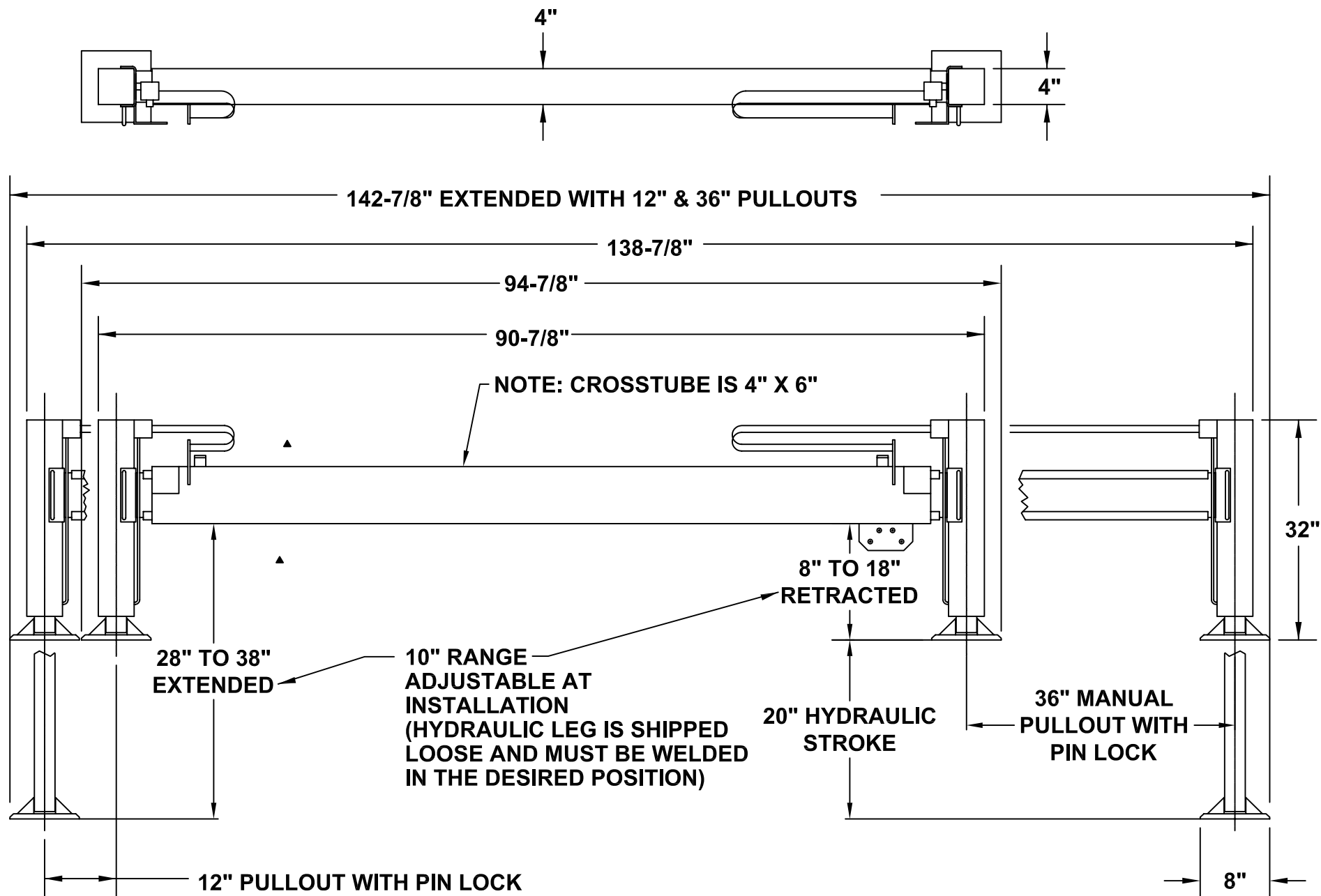


VENCO VENTURO INDUSTRIES LLC
CINCINNATI, OHIO

TITLE
20381 ADJUSTABLE BOOM REST
ET/HT16-66

DATE
03-03-23G
SUPERSEDES
07-08-14F

SECTION
-
20420



MANUFACTURING, INC.
CINCINNATI, OHIO

TITLE
INSTALLATION DWG

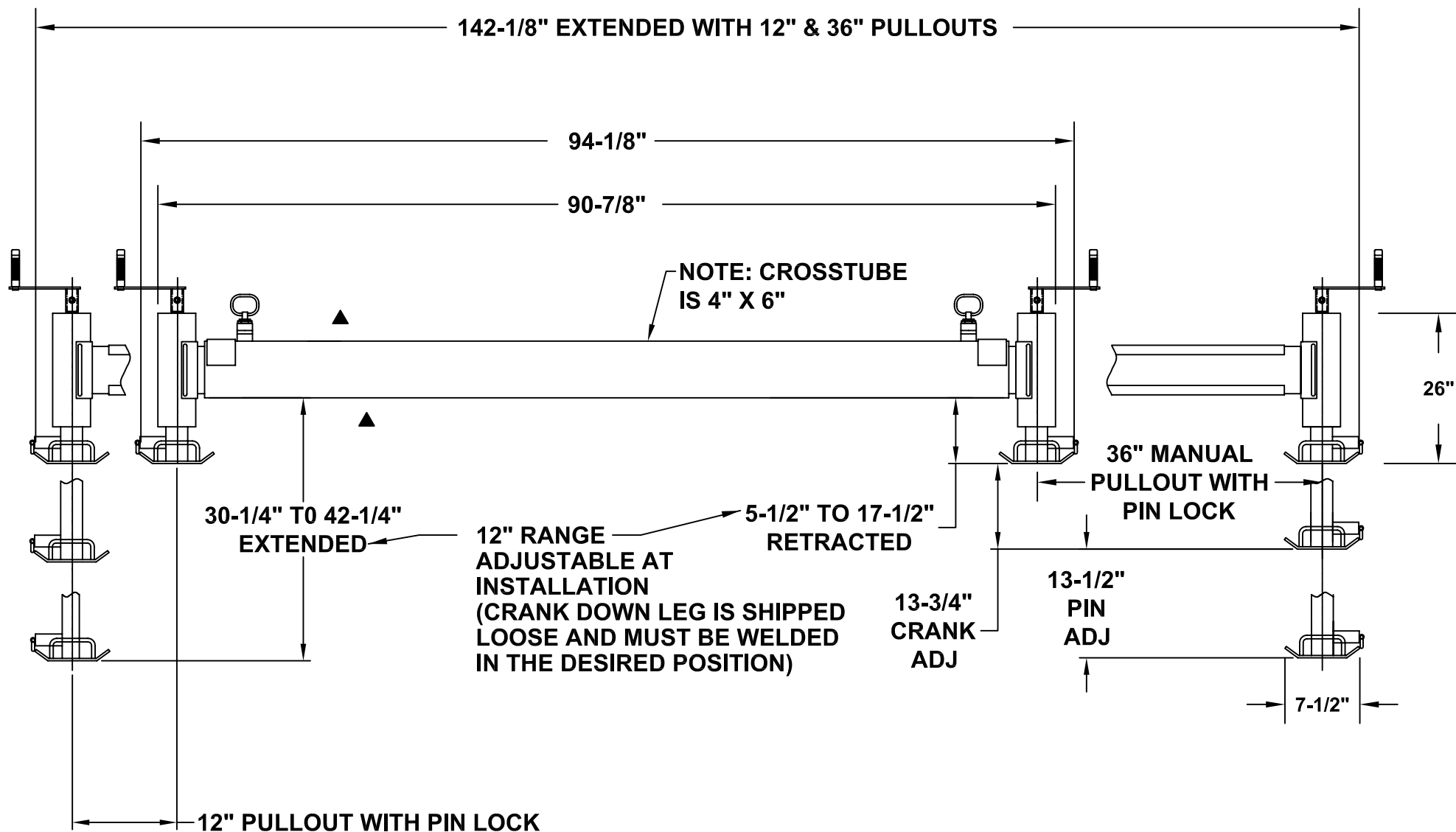
24962-PH & 24962-PHE ^

DATE
10-11-05D

SUPERSEDES
3-7-05C

SECTION
C100

22642



MANUFACTURING, INC.
CINCINNATI, OHIO

TITLE
INSTALLATION DWG

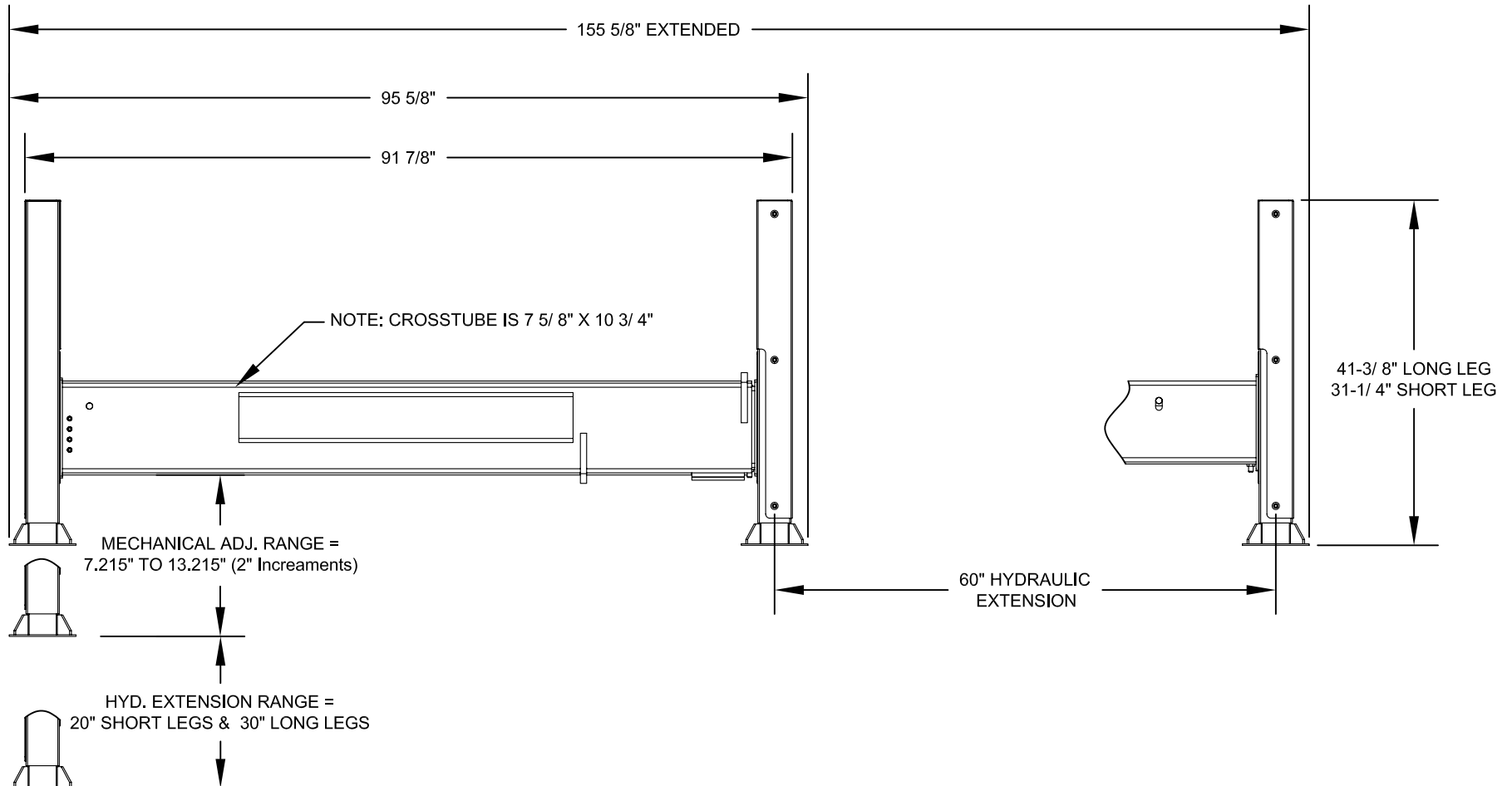
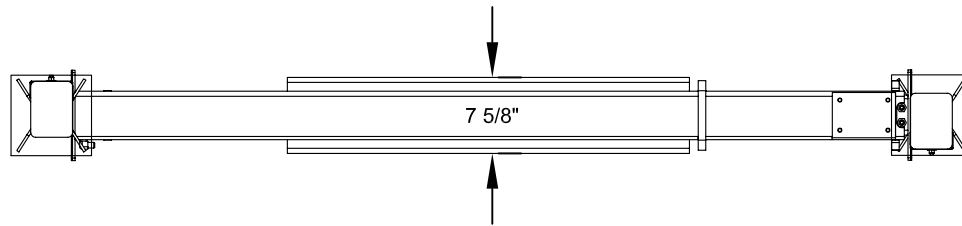
24962-CD OUTRIGGERS

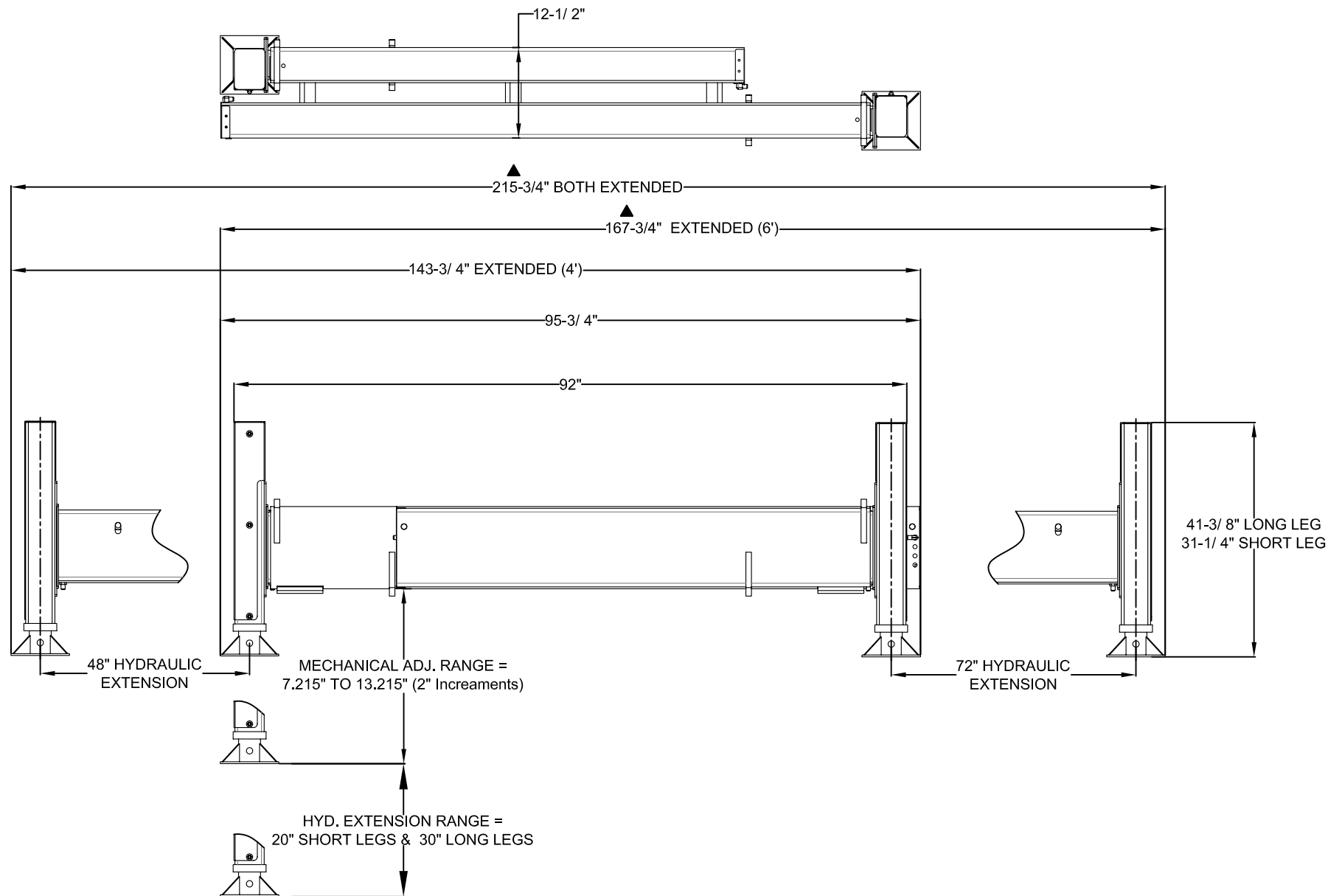
DATE
10-11-05D

SUPERSEDES
3-7-05C

SECTION
C100

22641





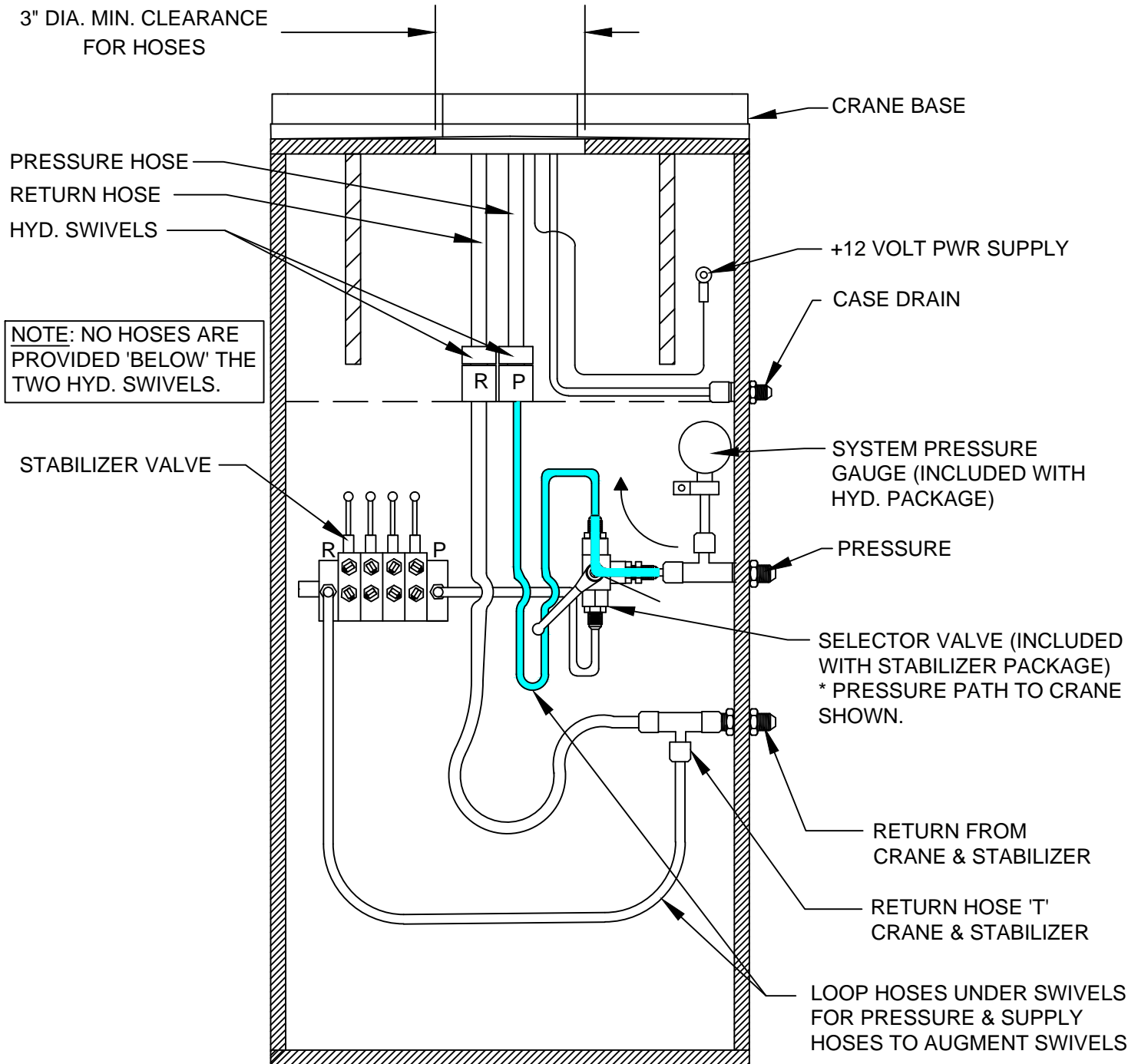
SECTION 200

INSTALLATION



VENCO VENTURO INDUSTRIES LLC
CINCINNATI, OHIO

RECOMMENDED SUPPLY & RETURN HOSE CONNECTIONS CRANE & STABILIZERS



CAUTION

- SELECTOR VALVE MUST BE 'NON-CLOSED CENTER TRANSITION' TYPE VALVE.



CAUTION

- CASE DRAIN MUST RETURN DIRECTLY TO RESERVOIR WITHOUT RESTRICTION.



VENCO VENTURO INDUSTRIES LLC
CINCINNATI, OHIO

TITLE
CONNECTIONS GUIDE

HT CRANES

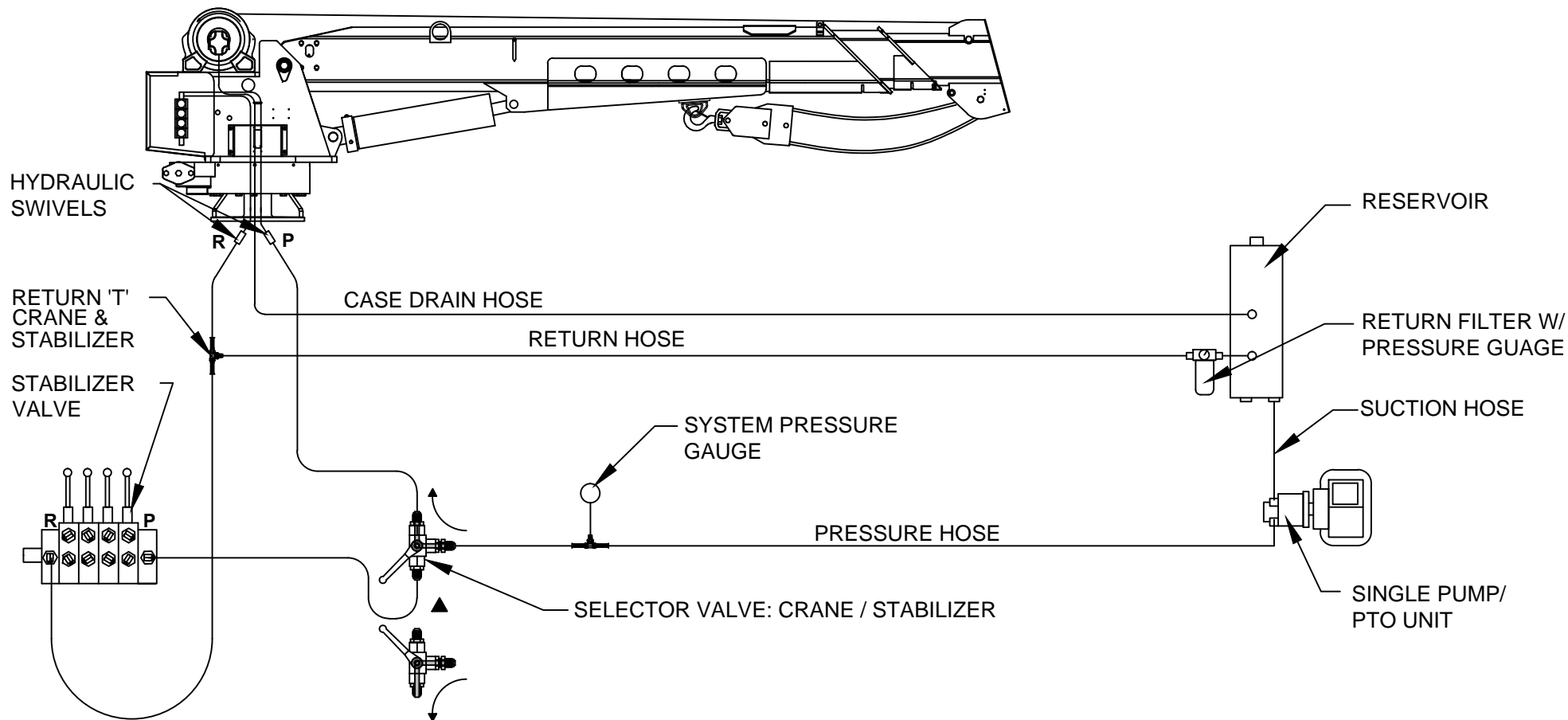
DATE
08-07-23G

SUPERSEDES
02-21-14F

SECTION
C200

22913

HYDRAULIC CIRCUIT CONNECTION GUIDE - SINGLE PUMP (NO COMPRESSOR) (REFER TO SECTION 200 FOR MORE INFORMATION, INCLUDING HOSE SPECIFICATIONS)



CAUTION

- SELECTOR VALVE MUST BE 'NON-CLOSED CENTER TRANSITION' TYPE.



CAUTION

- THE CASE DRAIN LINE FROM THE WINCH MUST HAVE AN UNRESTRICTED PATH TO TANK/ RESERVOIR.



VENCO VENTURO INDUSTRIES LLC
CINCINNATI, OHIO

TITLE

CONNECTION GUIDE, PAGE 1 / 2

HT CRANES

DATE

08-09-23C

SUPERSEDES

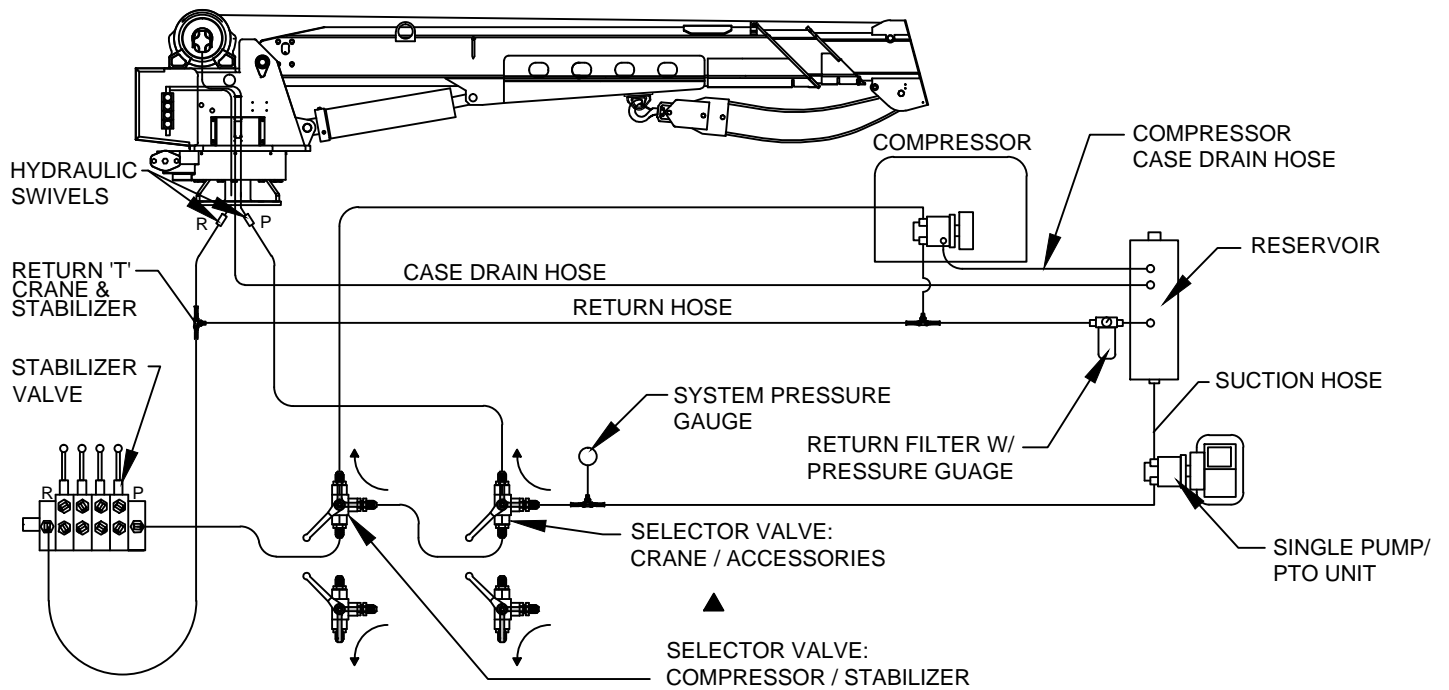
02-21-14B

SECTION

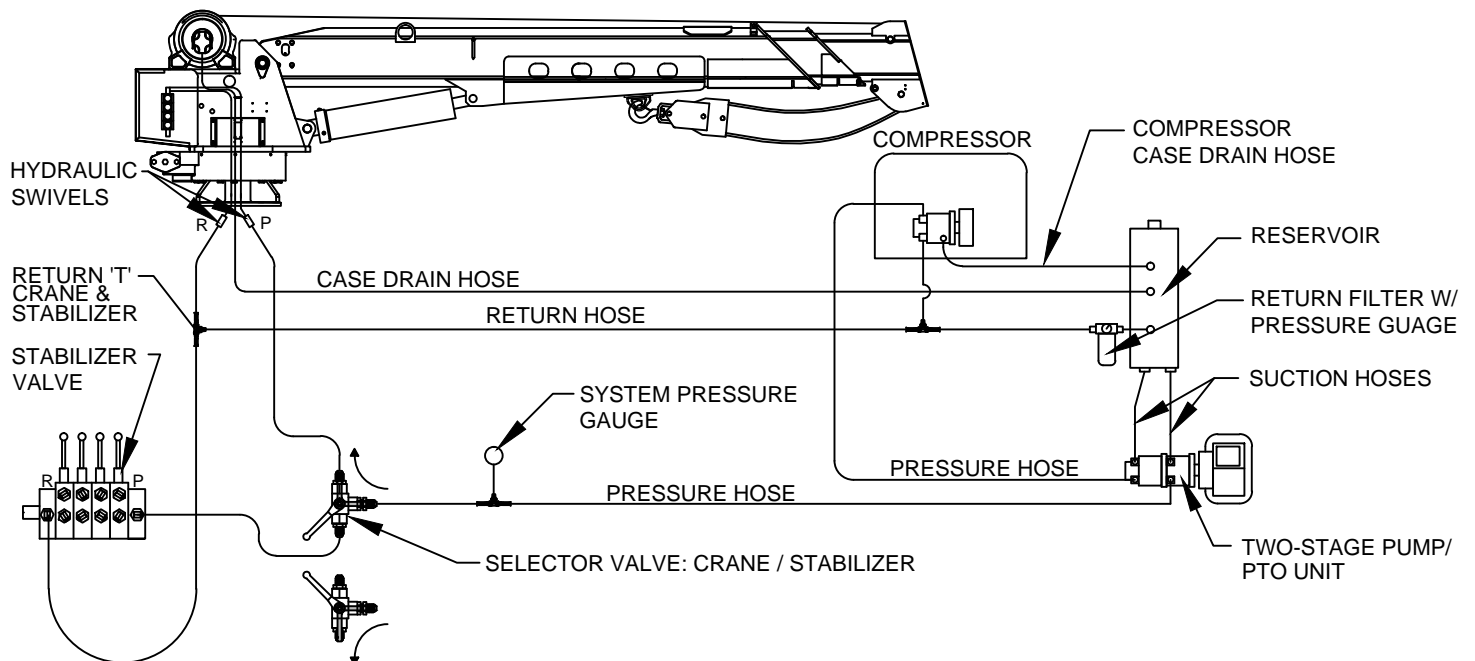
C200

23015

HYDRAULIC CIRCUIT CONNECTION GUIDE - SINGLE PUMP W/ COMPRESSOR



HYDRAULIC CIRCUIT CONNECTION GUIDE - TWO-STAGE PUMP W/ COMPRESSOR



CAUTION

- SELECTOR VALVE MUST BE 'NON-CLOSED CENTER TRANSITION' TYPE.

REFER TO SECTION 200 FOR MORE INFORMATION, INCLUDING HOSE SPECIFICATIONS



CAUTION

- THE CASE DRAIN LINE FROM THE WINCH MUST HAVE AN UNRESTRICTED PATH TO TANK/ RESERVOIR.



VENCO VENTURO INDUSTRIES LLC
CINCINNATI, OHIO

TITLE
CNNCTN GDE, PAGE 2/2

HT CRANES

DATE
08-08-23C

SUPERSEDES
02-21-14B

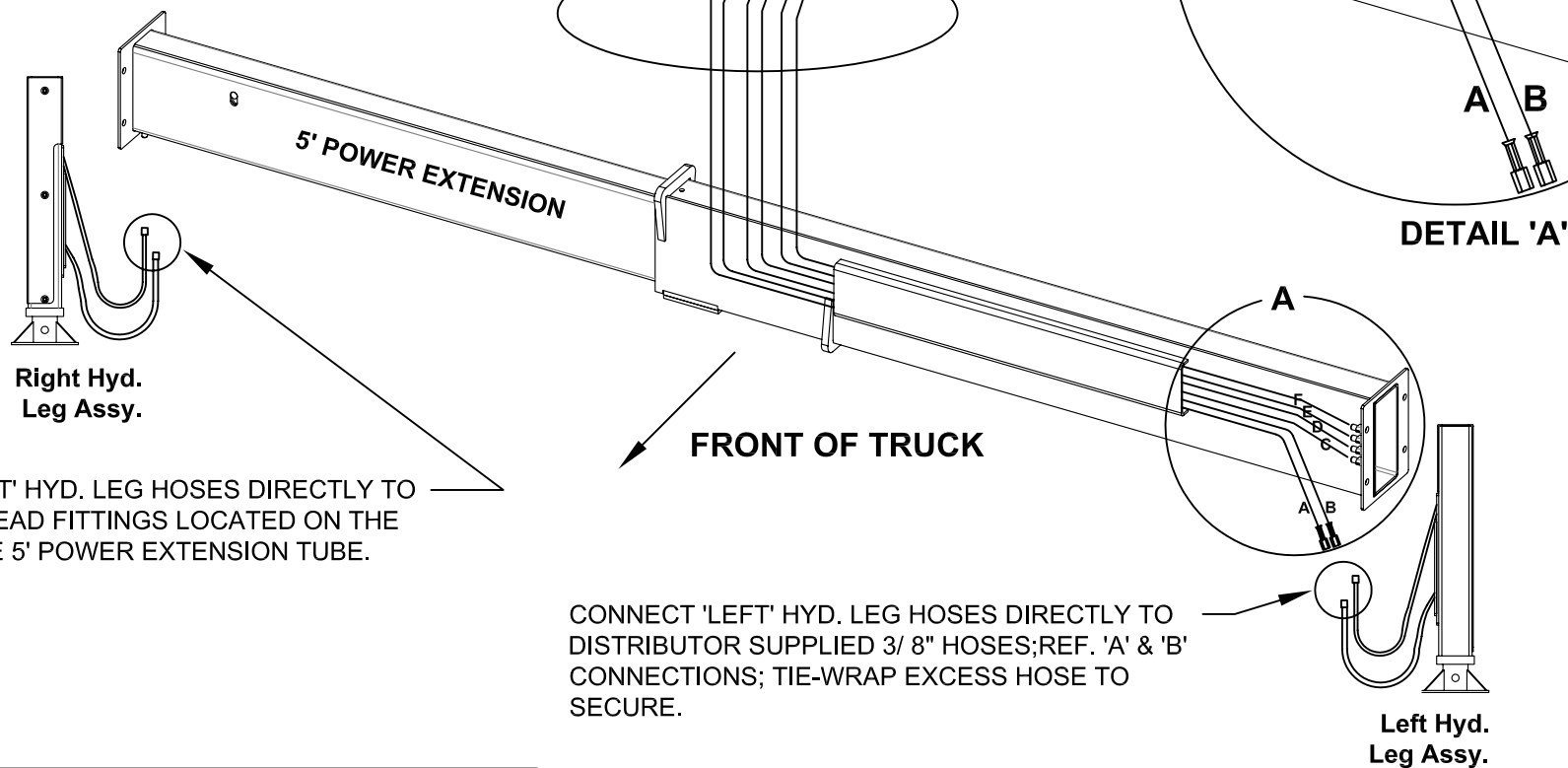
SECTION
C200

23014

CONTROL VALVE FUNCTION LIST

- A = Left Leg 'DOWN'
- B = Left Leg 'UP'
- C = Right Leg 'DOWN'
- D = Right Leg 'UP'
- E = 5' Extend 'OUT'
- F = 5' Retract 'IN'

Hoses between the control valve and the crosstube and the Left Hyd Leg Assy. are 'not' provided.



CONNECT 'RIGHT' HYD. LEG HOSES DIRECTLY TO TWO 90° BULKHEAD FITTINGS LOCATED ON THE BOTTOM OF THE 5' POWER EXTENSION TUBE.

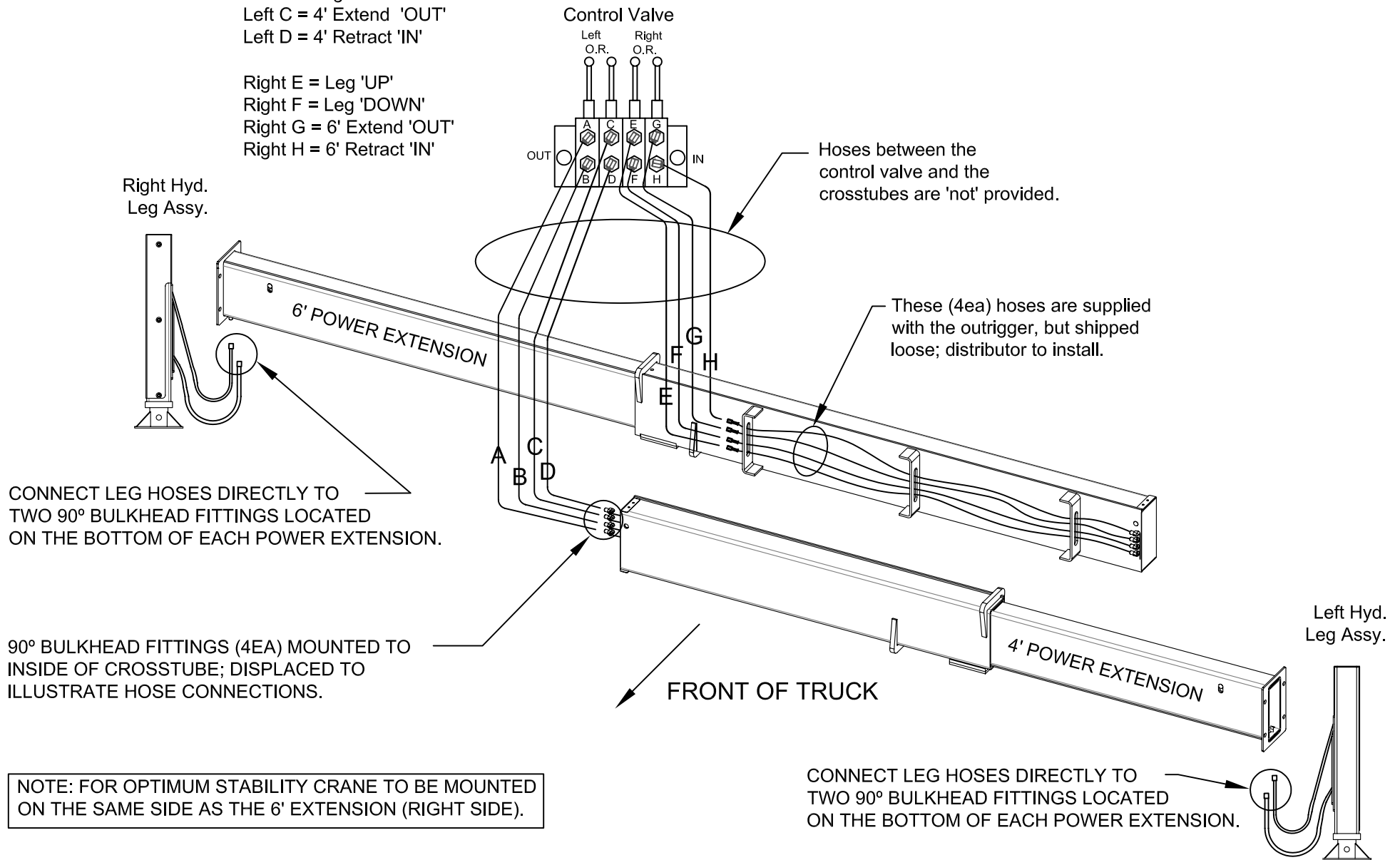
CONNECT 'LEFT' HYD. LEG HOSES DIRECTLY TO DISTRIBUTOR SUPPLIED 3/ 8" HOSES; REF. 'A' & 'B' CONNECTIONS; TIE-WRAP EXCESS HOSE TO SECURE.

NOTE: FOR OPTIMUM STABILITY CRANE TO BE MOUNTED ON THE SAME SIDE AS THE 5' EXTENSION (RIGHT SIDE).

CONTROL VALVE FUNCTION LIST

Left A = Leg 'UP'
 Left B = Leg 'DOWN'
 Left C = 4' Extend 'OUT'
 Left D = 4' Retract 'IN'

Right E = Leg 'UP'
 Right F = Leg 'DOWN'
 Right G = 6' Extend 'OUT'
 Right H = 6' Retract 'IN'



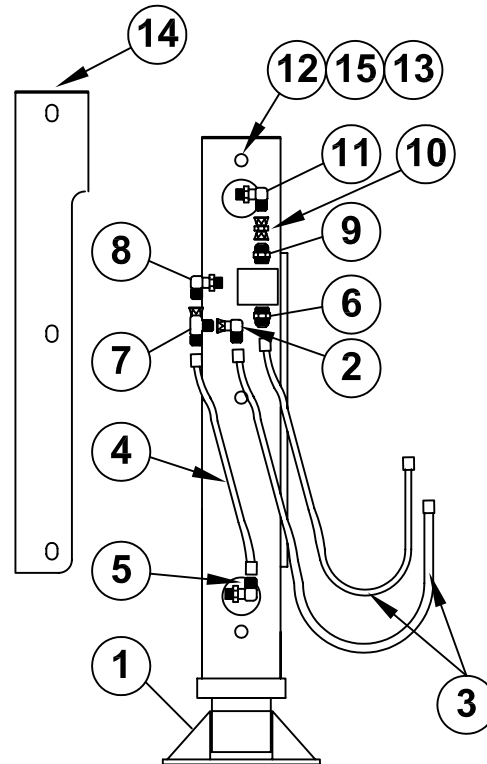
SECTION 400

REPLACEMENT PARTS

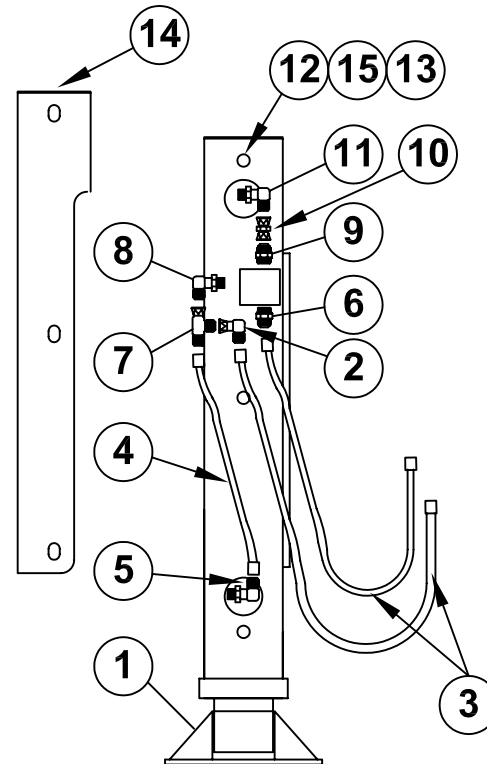


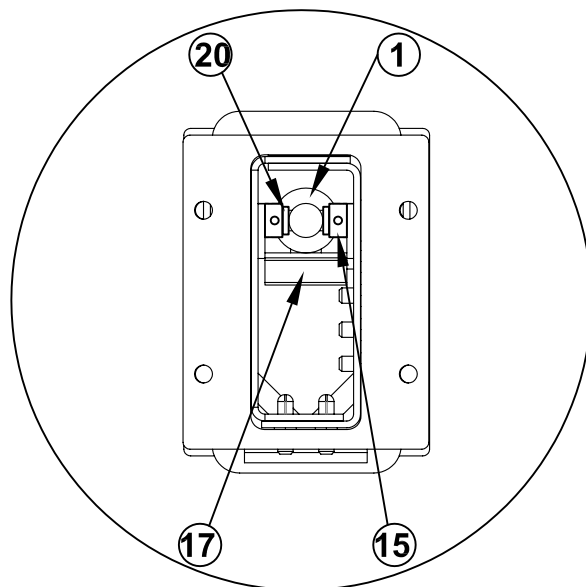
VENCO VENTURO INDUSTRIES LLC
CINCINNATI, OHIO

15	3	!FWSH-031	FLAT WASHER 5/16
14	1	25068-1	COVER
13	3	25070	SPACER
12	3	!LNUT-03118-N	LOCK NUT, 5/16-18
11	2	H6801L-0606	90DEG LONG ELBOW 6MO-6MJ
10	2	H6565-0606	COUPLING SWIVEL 6FJX-6FJX
9	2	H2404-0608	ADAPTER 6MJ-8MP
8	2	H6801-0406	90DEG STD ELBOW 6MO-4MJ
7	2	H6602-040404	TEE 6MJ-6FJX-6MJ (SWIVEL NUT RUN TEE)
6	2	H6400-0406	CONNECTOR 6MO-4MJ
5	2	H6801LL-0404	90DEG LONG ELBOW 4MO-4MJ
4	2	25061	HOSE - RETURN (LONG LEG)
3	4	25152	HOSE - EXT. (LONG LEG)
2	2	H6500-0404	90DEG ELBOW 4MJ - 4FX
1	2	27637-LL	HYD LONG LEG
ITEM	QTY	PART NUMBER	DESCRIPTION

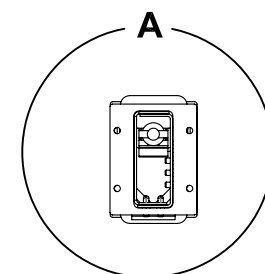
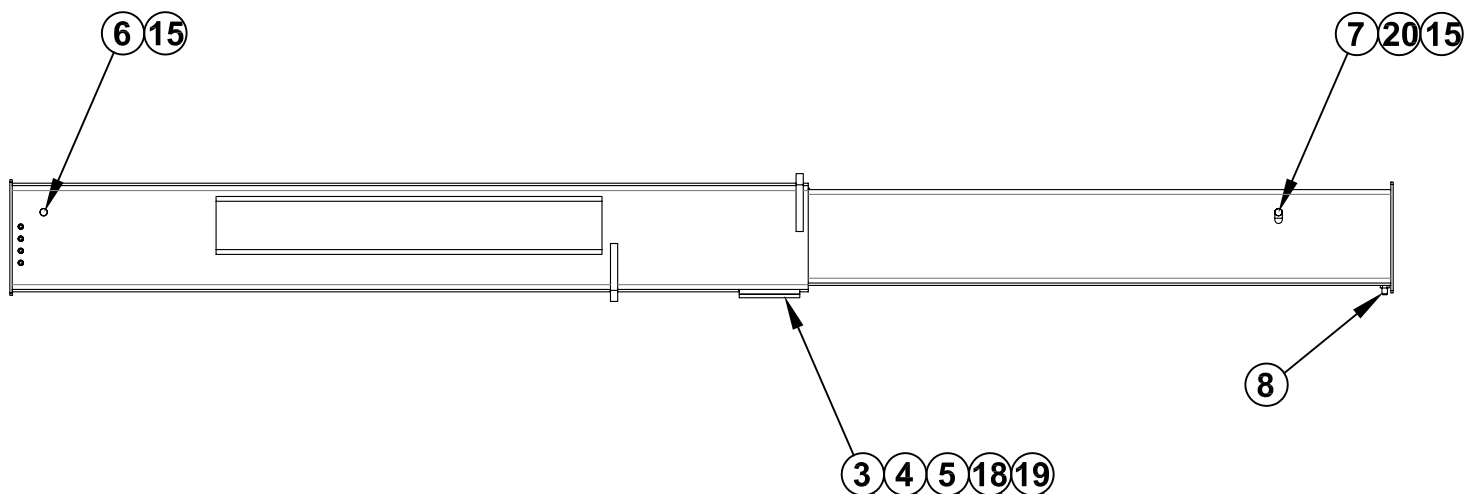
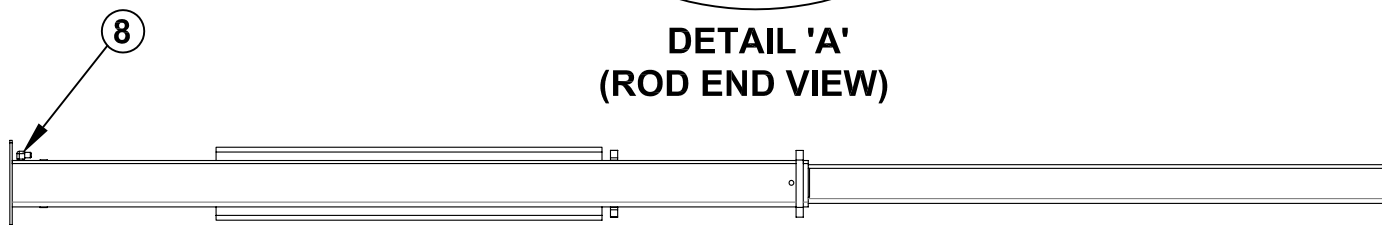
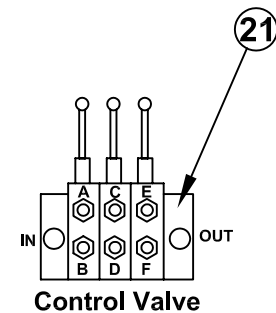
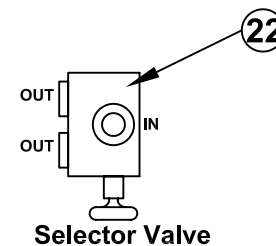


16	3	3	!FWSH-031	FLAT WASHER 5/16
17		1	25068-2	COVER ASSY-RIGHT HYD LONG LEG
15	1		25068-1	COVER ASSY-LEFT HYD LONG LEG
14	3	3	25070	SPACER
13	3	3	!LNUT-03118	LOCK NUT, 5/16-18
12	2	2	H6801L-0606	90DEG LONG ELBOW 6MO-6MJ
11	2	2	H6565-0606	COUPLING SWIVEL 6FJX-6FJX
10	2	2	H2404-0608	ADAPTER 6MJ-8MP
9	2	2	H6801-0406	90DEG STD ELBOW 6MO-4MJ
8	2	2	H6602-040404	TEE 6MJ-6FJX-6MJ (SWIVEL NUT RUN TEE)
7	2	2	H6400-0406	CONNECTOR 6MO-4MJ
6	2	2	H6801LL-0404	90DEG LONG ELBOW 4MO-4MJ
5	2	2	25061	HOSE - EXT. (LONG LEG)
4	4	4	25152	HOSE - EXT. (LONG LEG)
3	2	2	H6500-0404	90DEG ELBOW 4MJ - 4FX
2		1	25055-2	HYD LONG LEG (RIGHT)
1	1		25055-1	HYD LONG LEG (LEFT)
ITEM	25084-1(LT)	25084-2 (RT)	PART NUMBER	DESCRIPTION



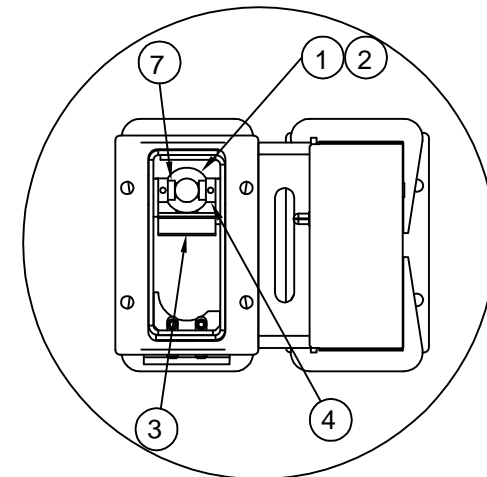
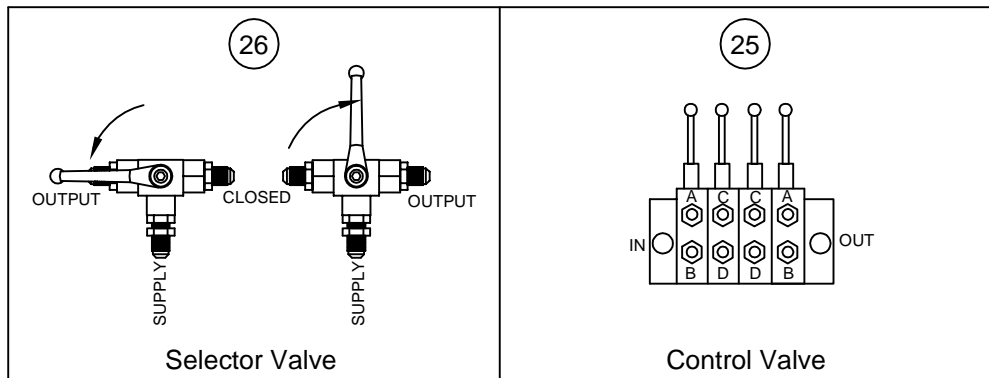


DETAIL 'A'
(ROD END VIEW)

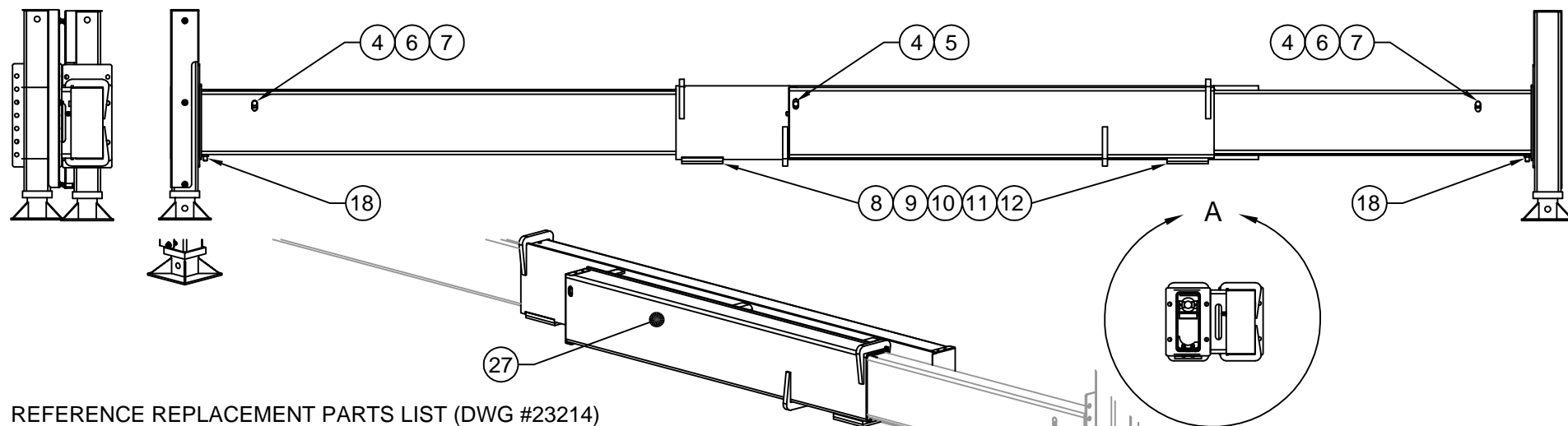
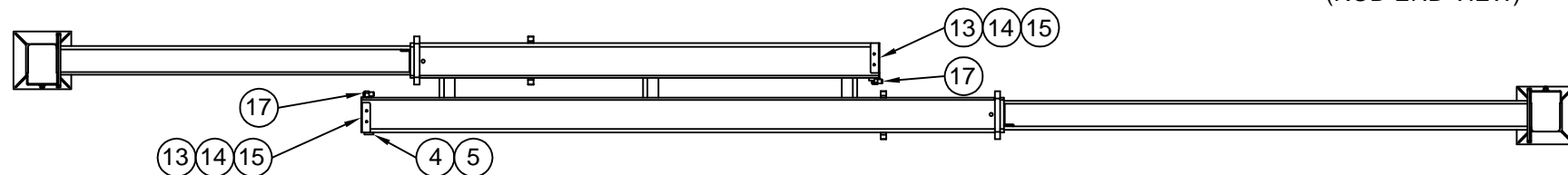


22	1	27740	SELECTOR VALVE (CRANE & OUTRIGGER)	CONTROLS FLOW TO EITHER CRANE OR O.R.
21	1	25050	CONTROL VALVE, 3-SPOOL	CONTROLS 5' EXTENSION & LEG UP/DOWN
20	2	27658	EXT. CYL. PIN SPACER	ROD END
19	4	!LWSH-038	LOCK WASHER 3/8	CROSS TUBE
18	4	!HHCS03816075	HHCS 3/8-16 X 3/4	CROSS TUBE
17	1	27689	CYL HOSE SUPPORT	MOUNTED TO EXTENSION CYLINDER PORT
* 16	1	25050	CONTROL VALVE, 3-SPOOL	USER DETERMINED
15	4	00210	SET COLLAR	CYLINDER BASE & ROD END
* 14	1	27698b	HOSE BRACKET	INTERNAL
* 13	1	H2406-0606	ADAPTER 6MJ-6FJ	CYL ROD PORT, JOINS HOSE & H6801L-0608
* 12	2	27715	HOSE-HYD LEG	INTERNAL - LOOPED HOSES FOR RT HYD LEG
* 11	1	27714	HOSE-RET	INTERNAL EXTENSION CYLINDER - ROD END
* 10	1	27713	HOSE-EXT	INTERNAL EXTENSION CYLINDER - BASE END
* 9	2	H6801L-0608	90 DEG ELBOW 6MJ-8MO	CYLINDER PORTS
8	6	H2701LN-0606	90 DEG BULKHEAD FITTING 6MJ-6MJ	CROSS TUBE & 5' EXTENSION
7	1	27639	EXTENSION CYLINDER PIN (OUTBOARD)	ROD END
6	1	27638	EXTENSION CYLINDER PIN (INBOARD)	BASE END
5	2	27718	BEARING (UHMW)	CROSS TUBE
4	1	27719	BEARING SPACER	CROSS TUBE
3	1	27643	BEARING HOLDING PLATE	CROSS TUBE
* 2	2	27700	CLAMPS ADJ HOSE	INTERNAL
1	1	27692	CYLINDER EXT 2 X 60	INTERNAL
ITEM	QTY	PART NUMBER	DESCRIPTION	WHERE USED

NOTE: ITEM NUMBERS WITH (*) NOT SHOWN ON ILLUSTRATION 23212



DETAIL 'A'
(ROD END VIEW)



REFERENCE REPLACEMENT PARTS LIST (DWG #23214)



VENCO VENTURO INDUSTRIES LLC
CINCINNATI, OHIO

TITLE

REPLACEMENT PARTS DRAWING

27634-PHX-LL DUAL TUBE OUTRIGGER, 6X4

DATE

09-09-15C

SUPERSEDES

10-06-10B

SECTION

C400

23213

27	27631	CROSSTUBE WELDED ASSEMBLY	USER DETERMINES PLACEMENT
26	27783	SELECTOR VALVE	USER DETERMINES PLACEMENT
* 25	22555	CONTROL VALVE, 4 SPOOL	EXTENSION CYLINDER PORTS (48" & 72")
* 24	H6801L-0608	90° ELBOW, 6MJ-8MO	EXTERNAL BETWEEN CROSSTUBES
* 23	27680	HOSE TO OUTRIGGER VALVE BLOCK CONNECTION	INTERNAL
* 22	27679	HOSE TO HYDRAULIC LEG (6' SIDE)	INTERNAL
* 21	27678	HOSE TO HYDRAULIC LEG (4' SIDE)	INTERNAL
* 20	27677	HOSE; RETURN (6' CYLINDER)	INTERNAL
* 19	27676	HOSE; RETURN (4' CYLINDER)	INTERNAL
* 18	27675	HOSE; EXTENSION	INTERNAL
* 17	H2701LN-0606	90° BULKHEAD FITTING, 6MJ-6MJ	4EA ON EXTENSIONS; 8EA ON CROSSTUBES
* 16	27700	CLAMPS; ADJ HOSE	INTERNAL
15	!LWSH-025	LOCK WASHER; 1/4"	CROSSTUBE END COVERS
14	!HHCS02520038	HHCS 1/4-20 X 3/8	CROSSTUBE END COVERS
13	27644	CROSSTUBE END COVER	CROSSTUBE
12	27718	BEARING (UHMW)	CROSSTUBE
11	27719	BEARING SPACER	CROSSTUBE
10	!LWSH-038	LOCK WASHER; 3/8"	CROSSTUBE
9	!HHCS03816075	HHCS 3/8-16 X 3/4	CROSSTUBE
8	27643	BEARING HOLDING PLATE	CROSSTUBE
7	27658	EXTENSION CYLINDER PIN SPACER	ROD END
6	27638	EXTENSION CYLINDER PIN (OUTBOARD)	ROD END
5	27638	EXTENSION CYLINDER PIN (INBOARD)	BASE END
4	00210	SHAFT COLLAR; 3/4"	ROD & BASE END
3	27689	CYLINDER HOSE SUPPORT	MOUNTED TO EXTENSION CYLINDER PORTS
2	25086	EXTENSION CYLINDER, 48	4' CROSSTUBE SECTION
1	27635	EXTENSION CYLINDER, 72	6' CROSSTUBE SECTION
ITEM	PART NO.	DESCRIPTION	WHERE USED

REFERENCE REPLACEMENT PARTS DWG #23213, ITEM NUMBERS WITH (*) NOT SHOWN



VENCO VENTURO INDUSTRIES LLC
CINCINNATI, OHIO

TITLE

REPLACEMENT PARTS LIST

DATE

09-09-15C

SECTION

C400

27634-PHX-LL DUAL TUBE OUTRIGGER, 6X4

SUPERSEDES

10-06-10B

23214



VENTURO CRANES LIMITED WARRANTY POLICY

Venturo products are built to last...we guarantee them.

As a purchaser of any new Venturo product covered by warranty, you will receive 1 year of the most complete coverage available...and, at no added cost to you.

1-Year Limited Warranty Policy

This limited policy warrants new products of Venturo to be free from defects in material and workmanship for a period of one (1) year from date of original installation. OEM products or accessories purchased by Venturo as part of or offered with our product will carry the OEM manufacturer's respective warranty. Our warranty covers:

- ***Repair or replacement of product***
- ***Labor to repair or replace product***
- ***Freight to return and/or replace product***

We shall not be liable for any contingent liabilities arising out of the improper function of any products. Warranty shall become void if the product is improperly installed, modified, damaged, abused or used for application other than intended use. There is no warranty of merchantability, fitness for a particular purpose, warranty arising from course of dealing or usage of trade, or any other implied or expressed warranty, except as made specifically herein. This warranty supersedes all previous warranties, written or implied.

Warranty Claims

Venco Venturo Industries LLC will make a good faith effort for prompt correction or other adjustment with respect to any product, which proves to be defective after our inspection and within the warranty period. Before any repairs are attempted or before returning any product, your Venturo Distributor is required to obtain a warranty claim number. This number is necessary for any claim to be considered. To obtain a warranty claim number, Venturo requires the model and serial number. Only authorized Venturo Distributors can perform warranty. For the name and address of your local Venturo Distributor call the **Warranty Claim Department - 513-772-8448**.

WARNING - It is the responsibility of the installer to ensure the installation is completed according to the manufacturer's recommendations, ensure the ultimate user understands how to operate product in a safe manner, and understands the need for regular service and maintenance by an authorized Venturo Distributor. No modifications or alterations may be made to any Venturo product without the expressed written consent of Venco Venturo Industries LLC. Installation of any Venturo product must be done by an authorized Venturo Distributor, to the standards of the industry; including maintenance, service and affixing of all instruction, safety and warning decals. Users should be instructed as to the safe operation at time of delivery. Maintenance, service, operation and safety warning decals are available on request from Venco Venturo Industries LLC.

VENCO VENTURO INDUSTRIES LLC
12110 BEST PLACE | CINCINNATI, OHIO 45241
P: 800-226-2238 | F: 513-326-5427
www.venturo.com