

# PARTS & INSTALLATION MANUAL

---

## HT66KX-25

---

Included in this manual:

### **HT66KX-25 (VLC)**

- 11,500 lb Hydraulic Telescopic Service Crane
- Venturo Logic Control System w/ Proportional Control
- 25 ft Fully-Powered, Two-Stage, Boom Extension

VENCO VENTURO INDUSTRIES LLC  
12110 BEST PLACE | CINCINNATI, OHIO 45241  
800-226-2238



This manual also available online at [www.venturo.com](http://www.venturo.com).



# HT66KX-25'

INST-23845 - 12/4/2023 (Rev: A2)

<b>7607100A</b>	<b>DESCRIPTION &amp; SPECIFICATIONS</b>
23801	INSTALLATION DIMENSIONS
23802	MOUNTING DIMENSIONS; BASE PLATE
23803	CAPACITY CHART; HT66KX-25' VLC
<b>7607150A</b>	<b>SAFETY</b>
15394	VEHICLE & CRANE ELECTRICAL HAZARD INFORMATION
920612	SAFETY & HAZARDS, GENERAL
19217	WINCH SAFETY WARNINGS
22181A	SAFETY DECALS DRAWING & LIST
22181B	SAFETY DECALS DRAWING & LIST
22181C	SAFETY DECALS DRAWING & LIST
22181D	SAFETY DECALS DRAWING & LIST
23804	BOOM CAPACITY DECALS
23748	VLC DECALS
<b>7607200A</b>	<b>INSTALLATION</b>
23805	CRANE INSTALLATION, 1/2
23806	CRANE INSTALLATION, 2/2
23753	CRANE OPERATION & MAINTENANCE, 1/3
23808	CRANE OPERATION & MAINTENANCE, 2/3
23809	CRANE OPERATION & MAINTENANCE, 3/3
22168	EXPLANATION OF HYDRAULIC VALVE SYSTEM
20051	ROTATION STOP LOCATION
20906-66V	STABILITY TEST
20907	STABILITY CHART
22825	RESERVOIR DIMENSIONS
22883	HYDRAULIC COMPONENT INSTALLATION
23015	CONNECTIONS GUIDE, 1/3
23014	CONNECTIONS GUIDE, 2/3
22913	CONNECTIONS GUIDE, 3/3
22245	WIRE ROPE INSTALLATION
<b>7607300A</b>	<b>MAINTENANCE &amp; SERVICE</b>
23203	MAINTENANCE OVERVIEW INFORMATION
23232	WIRE ROPE & HOOK SPECIFICATIONS
<b>7607400A</b>	<b>REPLACEMENT PARTS</b>
23810	REPLACEMENT PARTS DRAWING - MECHANISM
23811	REPLACEMENT PARTS LIST - MECHANISM
23812	REPLACEMENT FASTENERS DRAWING - MECHANISM
23813	REPLACEMENT FASTENERS LIST - MECHANISM
23814	REPLACEMENT PARTS DRAWING - 27260 BOOM
23815	REPLACEMENT PARTS LIST - 27260 BOOM
23816	REPLACEMENT FASTENERS DRAWING - 27260 BOOM
23817	REPLACEMENT FASTENERS LIST - 27260 BOOM
28239	A2B STOWAGE CUT-OUT
27332	REPLACEMENT PARTS DIAGRAM - 27274 WINCH
23846	REPLACEMENT PARTS DRAWING - HYDRAULIC COMPONENTS
23847	REPLACEMENT PARTS LIST - HYDRAULIC COMPONENTS
22940	22736H HYDRAULIC VALVE MANIFOLD REPLACEMENT PARTS DRAWING & LIST
28188	WORK LIGHT INSTALLATION INSTRUCTIONS; COMPACT A2B MOUNT
23836	WIRING DIAGRAM, 1/2
23821	WIRING DIAGRAM, 2/2
23822	HYDRAULIC SYSTEM DIAGRAM
22615	ENGINE START/STOP & THROTTLE CONTROL
23839	DECAL PLACEMENT
23224	REPLACEMENT PARTS DRAWING & LISTS - RESERVOIR KITS
23838	23837 FIELD SERVICE LABEL KIT
12-00073_VNT1	WARRANTY PAGE

# **SECTION 100**

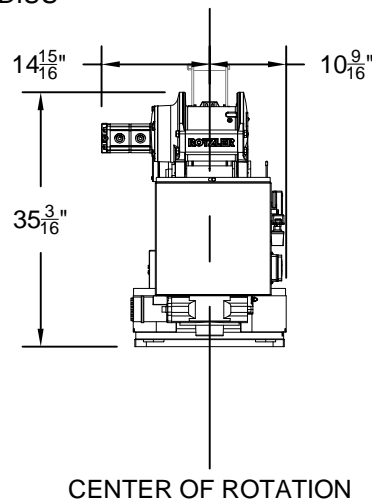
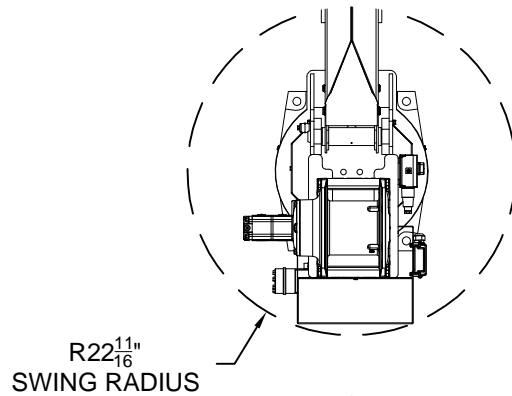
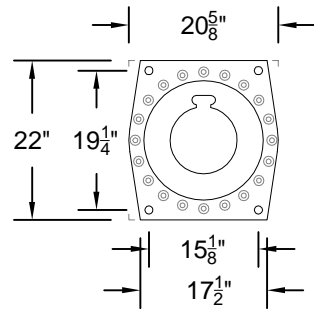
## **DESCRIPTION**

### **&**

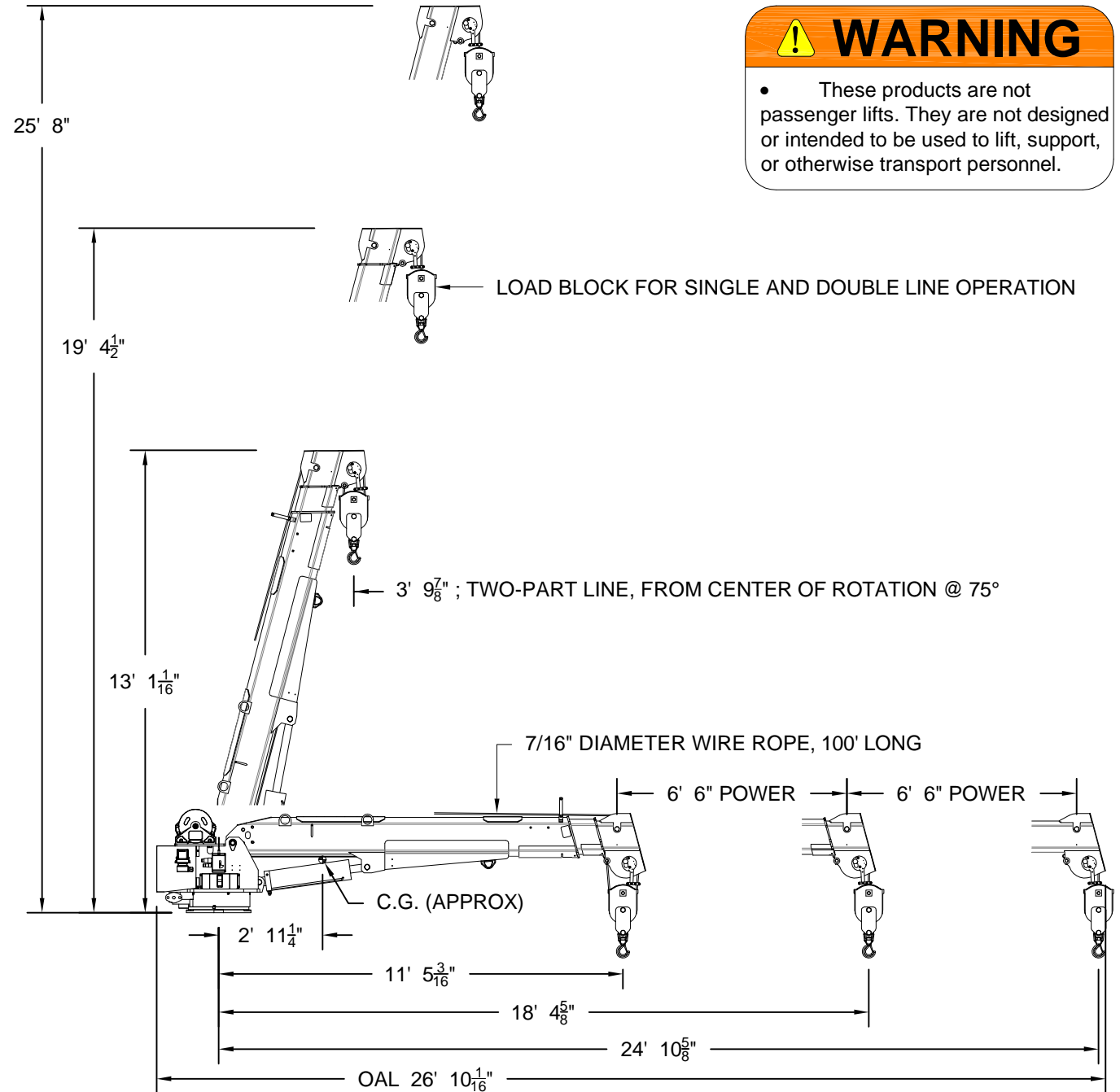
## **SPECIFICATIONS**



VENCO VENTURO INDUSTRIES LLC  
CINCINNATI, OHIO



THIS SECTION SCALED 2:1 FOR CLARITY



## ! WARNING

- These products are not passenger lifts. They are not designed or intended to be used to lift, support, or otherwise transport personnel.



VENCO VENTURO INDUSTRIES LLC  
CINCINNATI, OHIO

TITLE  
INSTALLATION DIMENSIONS

HT66KX-25' VLC SERIES

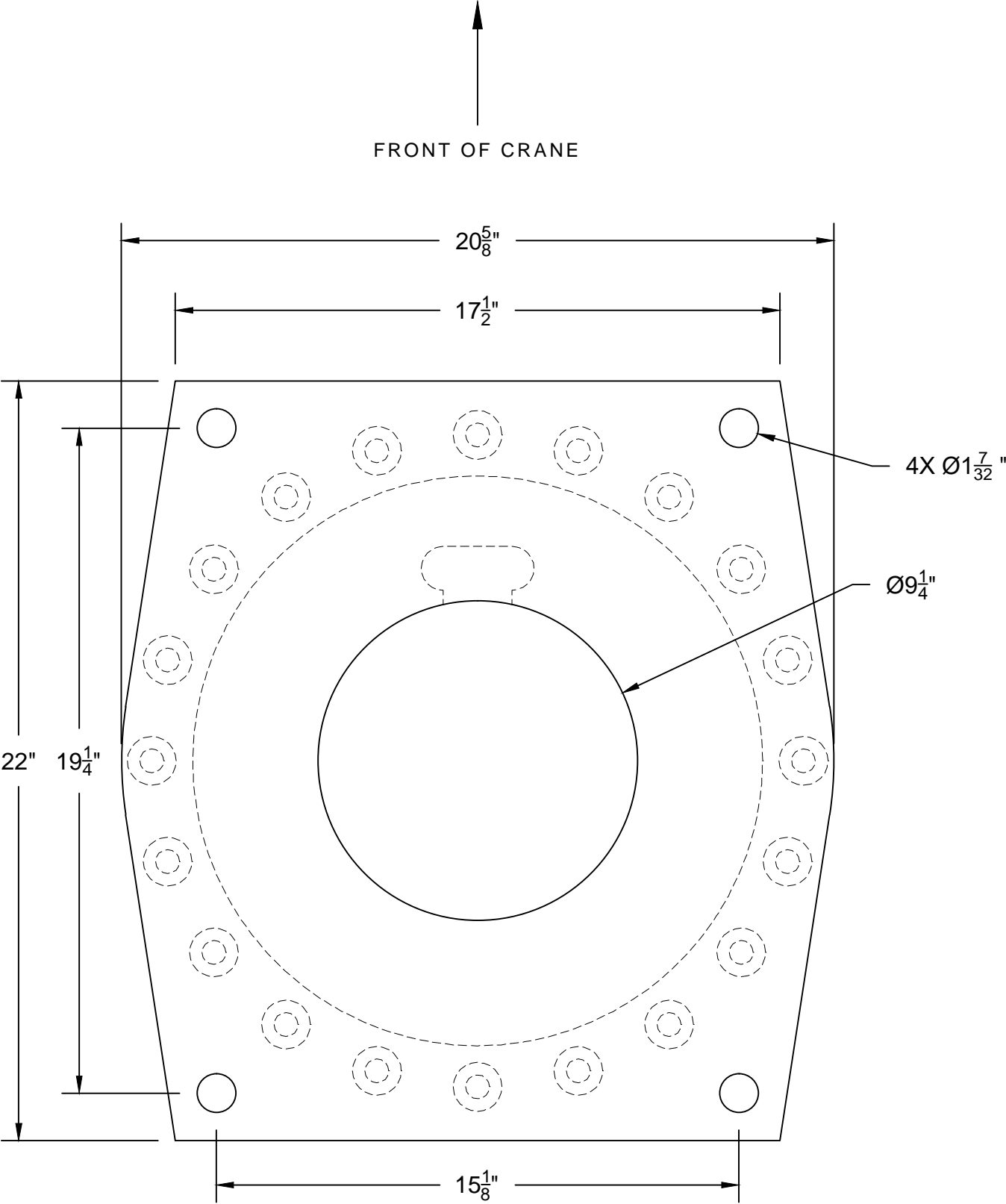
DATE  
02-06-19

SUPERSEDES  
-

SECTION  
C100

23801

# HT60/66KX VLC SERIES BASE MOUNTING DIMS



VENCO VENTURO INDUSTRIES LLC  
CINCINNATI, OHIO

TITLE  
**BASE MOUNTING DIMS**  
HT60/66KX VLC SERIES

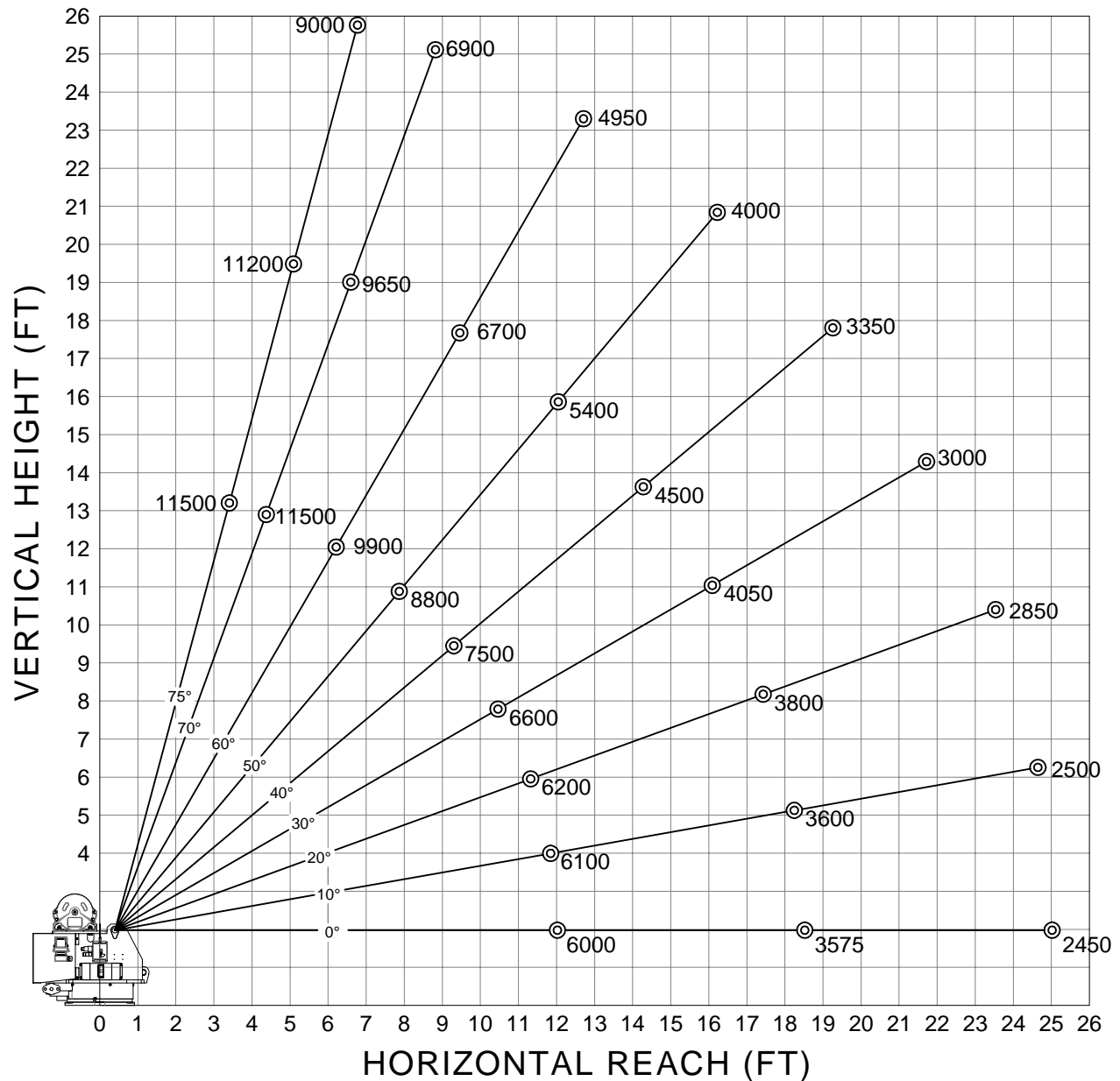
DATE  
**11-10-22-A**  
SUPERSEDES  
**02-06-19**

SECTION  
**C100**  
**23802**

# HT66KX SERIES, 12' - 18.5' - 25' BOOM, WITH VENTURO LOGIC CONTROL SYSTEM (VLC)

CRANE SERIAL NUMBER: \_\_\_\_\_

## MAXIMUM LOAD CAPACITY CHART



WEIGHT OF LOAD HANDLING DEVICES ARE PART OF THE LOAD AND MUST BE DEDUCTED FROM THE GROSS CAPACITY.

### LOAD BLOCK USAGE

1-PART LINE FOR LOADS LESS THAN 5750 LBS

2-PART LINE FOR LOADS OF 5750 LBS AND GREATER

WEIGHT OF LOAD BLOCK = 67 LBS



VENCO VENTURO INDUSTRIES LLC  
CINCINNATI, OHIO

TITLE	DATE	SECTION
MAXIMUM LOAD CAPACITY	03-18-19A	C100
HT66KX-25' VLC SERIES	SUPERSEDES 02-06-19	23803

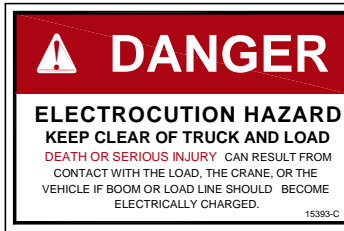
# SECTION 150

## SAFETY

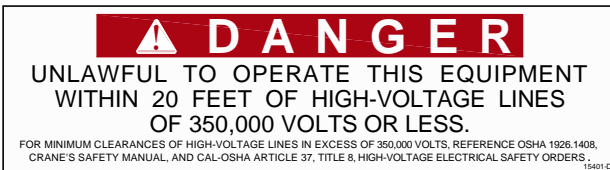


VENCO VENTURO INDUSTRIES LLC  
CINCINNATI, OHIO

# VEHICLE & CRANE MOUNTED ELECTRICAL HAZARD SIGN APPLICATION & INFORMATION



SIGN NO. 15393 DISPLAYS THE INTERNATIONAL SYMBOL FOR ELECTRICITY AND WARNS OF DANGER FROM AN ELECTRICALLY CHARGED VEHICLE, CRANE, OR LOAD. FOUR ARE RECOMMENDED (ONE FOR EACH SIDE AND ONE FOR EACH END OF VEHICLE) TO BE APPLIED IN LOCATIONS WHICH ARE READILY VISIBLE TO GROUND PERSONNEL.



SIGN NO. 15401 PROVIDES ADDITIONAL WARNING OF LEGAL REQUIREMENTS WHEN OPERATING NEAR HIGH VOLTAGE LINES. THIS SIGN IS PLACED ON THE CONTROL PENDANT SIDE OF BOOM.

Table A - Minimum Clearance Distances

Voltage (nominal, kV, alternating current)	Minimum clearance distance (feet) *
Up to 50.....	10
over 50 - 200.....	15
over 200 - 350.....	20
over 350 - 500.....	25
over 500 - 750.....	35
over 750 - 1000.....	45
Over 1000.....	(as established by the utility owner/operator or registered professional engineer who is a qualified person with respect to electrical power transmission and distribution).

Table T - Minimum Clearance Distances While Traveling With No Load

Voltage (nominal, kV, alternating current)	While traveling - minimum clearance distance (feet) *
0 - 0.75.....	4
over 0.75 - 50.....	6
over 50 - 345.....	10
over 345 - 750.....	16
over 750 - 1000.....	20
Over 1000.....	(as established by the utility owner/operator or registered professional engineer who is a qualified person with respect to electrical power transmission and distribution).

\* NOTE: ENVIRONMENTAL CONDITIONS SUCH AS FOG, SMOKE, OR PRECIPITATION MAY REQUIRE INCREASED CLEARANCES



VENCO VENTURO INDUSTRIES LLC  
CINCINNATI, OHIO

TITLE	DATE	SECTION
HAZARD APPS & INFO	02-21-14M	C150
ET/HT CRANES	SUPERSEDES 12-20-13L	15394

## CRANE SAFETY AND HAZARDS

### HT SERIES CRANES

#### **CAUTIONS**

1. INSPECT VEHICLE AND CRANE, INCLUDING OPERATION, PRIOR TO USE DAILY.
2. DO NOT USE THIS EQUIPMENT EXCEPT ON SOLID, LEVEL SURFACE WITH CRANE MOUNTED ON FACTORY-RECOMMENDED TRUCK.
3. BEFORE OPERATING THE CRANE, REFER TO MAXIMUM LOAD (CAPACITY) CHART ON CRANE FOR OPERATING (LOAD) LIMITATIONS.
4. DO NOT OPERATE, WALK, OR STAND BENEATH BOOM OR A SUSPENDED LOAD.
5. ATTACH PENDANT CORD SUPPORT SNAP TO ATTACHMENT POINT BEFORE PLUGGING IN PENDANT.
6. UNPLUG PENDANT AND DISENGAGE PTO SYSTEM WHEN CRANE NOT IN USE.
7. FOR TRAVEL, BOOM MUST BE IN STOWED POSITION.

#### **DANGER**

- THIS CRANE IS NOT A PASSENGER LIFT
- IT IS NOT DESIGNED OR INTENDED TO BE USED TO LIFT, SUPPORT, OR OTHERWISE TRANSPORT PERSONNEL.

#### **YOU MUST NOT OPERATE THIS CRANE UNLESS**

1. YOU HAVE BEEN TRAINED IN THE SAFE OPERATION OF THIS CRANE  
AND
2. YOU KNOW AND FOLLOW THE SAFETY AND OPERATING RECOMMENDATIONS CONTAINED IN THE MANUFACTURER'S MANUALS, YOUR EMPLOYER'S WORK RULES, AND APPLICABLE GOVERNMENT REGULATIONS. AN UNTRAINED OPERATOR SUBJECTS HIMSELF AND OTHERS TO DEATH OR SERIOUS INJURY.

#### **ELECTROCUTION HAZARD**

- THIS MACHINE IS NOT INSULATED.
- MAINTAIN SAFE CLEARANCES FROM ELECTRICAL LINES AND APPARATUS.
- YOU MUST ALLOW FOR BOOM SWAY, ROCK OR SAG, AND ELECTRICAL LINE AND LOADLINE SWAYING.
- THIS LIFTING DEVICE DOES NOT PROVIDE PROTECTION FROM CONTACT WITH OR PROXIMITY TO AN ELECTRICALLY CHARGED CONDUCTOR.
- YOU MUST MAINTAIN A CLEARANCE OF AT LEAST 20 FEET BETWEEN ANY PART OF THE CRANE, LOADLINE, OR LOAD, AND ANY ELECTRICAL LINE OR APPARATUS CARRYING UP TO 350 kV (SEE NEW CHART). ADDITIONAL CLEARANCES ARE REQUIRED FOR VOLTAGES IN EXCESS OF 50,000 VOLTS. REFER TO DRAWING 15394 FOR ADDITIONAL INFORMATION.
- **DEATH OR SERIOUS INJURY** WILL RESULT FROM CONTACT OR INADEQUATE CLEARANCE.



VENCO VENTURO INDUSTRIES LLC  
CINCINNATI, OHIO

TITLE

CRANE SAFETY & HZRDS

DATE

02-21-14D

SECTION

C150

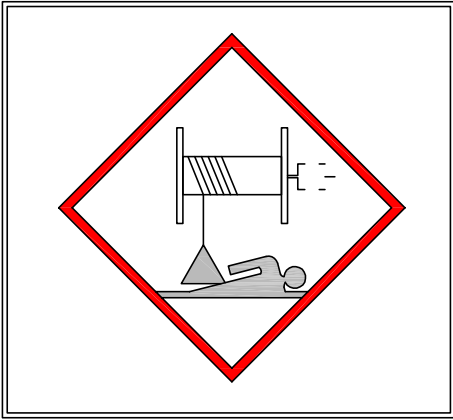
HYDRAULIC CRANES

SUPERSEDES

04-04-12C

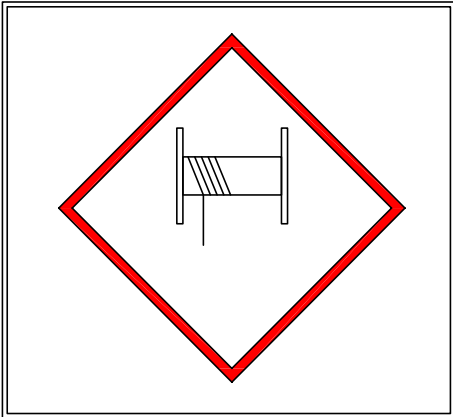
920612

# WINCH SAFETY WARNINGS



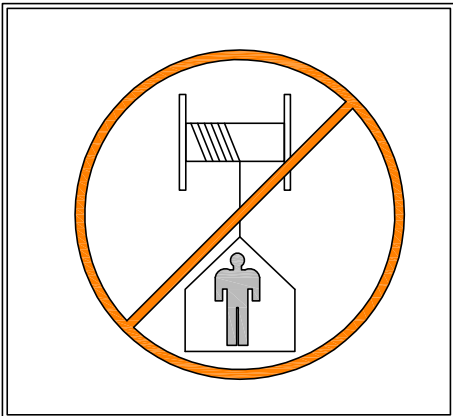
## DANGER

- DO NOT DISENGAGE WINCH UNDER LOAD



## DANGER

- THE LAST [5] (DEAD) WRAPS OF WIRE ROPE MUST BE LEFT ON TO ASSIST WIRE ROPE CLAMP IN HOLDING LOAD



## WARNING

- Winches are not to be used to lift, support, or otherwise transport personnel



VENCO VENTURO INDUSTRIES LLC  
CINCINNATI, OHIO

TITLE  
**WINCH SAFETY**  
HT CRANES

DATE  
02-21-14D  
SUPERSEDES  
04-04-12C

SECTION  
C150  
**19217**

PART NO.: 15398

DECAL: UNPLUG REMOTE CONTROL

FUNCTION: To inform the operator to unplug remote control when not being used.

QUANTITY: 1

PLACEMENT: Right side of housing.



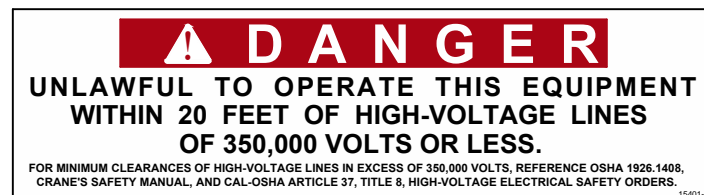
PART NO.: 15401

DECAL: UNLAWFUL TO OPERATE

FUNCTION: To inform the operator of proper operation in vicinity of power lines.

QUANTITY: 1

PLACEMENT: Right side of housing.



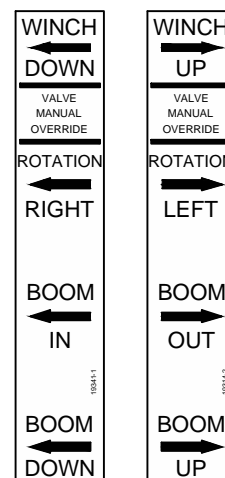
PART NO.: 19314-1 [LEFT] & -2 [RIGHT]

DECAL: MANUAL OVERRIDE (NON-PROP)

FUNCTION: To inform the operator of manual override locations.

QUANTITY: 1 EACH

PLACEMENT: Inside of rear cover.



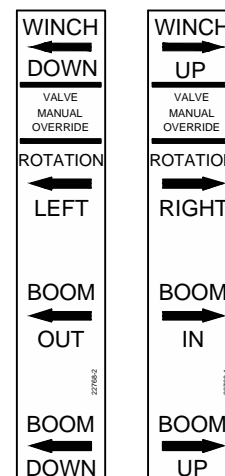
PART NO.: 22768-1 [LEFT] & -2 [RIGHT]

DECAL: MANUAL OVERRIDE (PROPORTIONAL)

FUNCTION: To inform the operator of manual override locations.

QUANTITY: 1

PLACEMENT: Inside of rear cover.



VENCO VENTURO INDUSTRIES LLC  
CINCINNATI, OHIO

TITLE  
DECAL DRAWING & LIST

HT40/50/60/66 SERIES

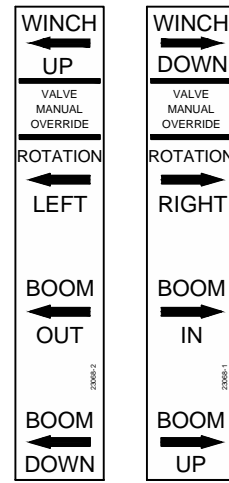
DATE  
11-30-22E

SUPERSEDES  
02-21-14D

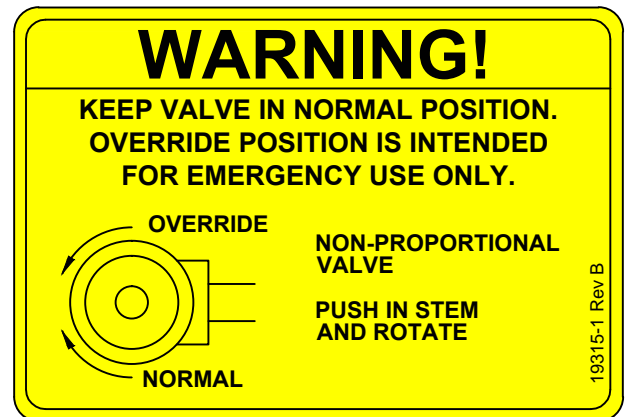
SECTION  
C150

22181A

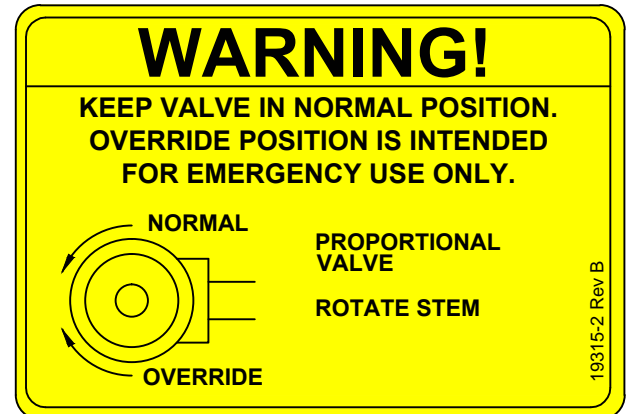
▲  
**PART NO.:** 23068-1 [LEFT] & -2 [RIGHT]  
**DECAL:** MANUAL OVERRIDE  
 (HT66KXX w/ TH-2 Winch ONLY)  
**FUNCTION:** To inform the operator of  
 manual override locations.  
**QUANTITY:** 1  
**PLACEMENT:** Inside of rear cover.



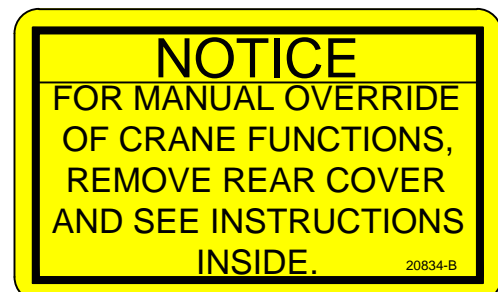
**PART NO.:** 19315-1  
**DECAL:** SHUT OFF (NON-PROPORTIONAL)  
**FUNCTION:** To show the operator how to  
 override master shut off valve.  
**QUANTITY:** 1  
**PLACEMENT:** Inside rear cover.



**PART NO.:** 19315-2  
**DECAL:** MANUAL OVERRIDE (PROPORTIONAL)  
**FUNCTION:** To show the operator how to  
 override proportional valve.  
**QUANTITY:** 1  
**PLACEMENT:** Inside rear cover.



**PART NO.:** 20834  
**DECAL:** MANUAL OVERRIDE NOTICE  
**FUNCTION:** To inform the operator of  
 manual override locations.  
**QUANTITY:** 1  
**PLACEMENT:** Inside rear cover.



VENCO VENTURO INDUSTRIES LLC  
 CINCINNATI, OHIO

TITLE  
**DECAL DRAWING & LIST**

HT40/50/60/66 SERIES

DATE  
 04-14-23H

SUPERSEDES  
 11-30-22G

SECTION  
 C150

**22181B**

PART NO.: 15390

DECAL: CAUTION - INSPECT VEHICLE & CRANE

FUNCTION: To inform the operator of key operating requirements.

QUANTITY: 1

PLACEMENT:Left side of rear cover.



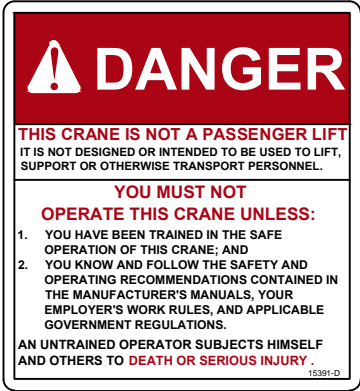
PART NO.: 15391

DECAL: DANGER - NOT PASSENGER LIFT

FUNCTION: To inform the operator not to lift, support or transport personnel, and to ensure that crane operator is adequately trained.

QUANTITY: 1

PLACEMENT:Left side of rear cover.



PART NO.: 15392

DECAL: DANGER - ELECTROCUTION HAZARD

FUNCTION: To inform the operator that the machine (crane) represents an electrocution hazard should it come too near or in contact with electrical voltage source.

QUANTITY: 1

PLACEMENT:Left side of rear cover.



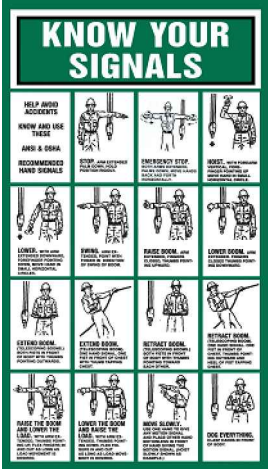
PART NO.: 22499

DECAL: KNOW YOUR SIGNALS

FUNCTION: To inform the operator of proper signals.

QUANTITY: 1

PLACEMENT:Right side of rear cover.



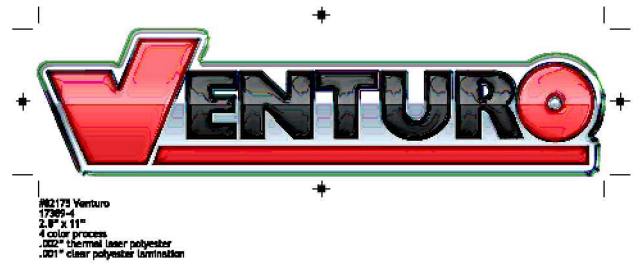
PART NO.: 17389

DECAL: MEDIUM VENTURO

FUNCTION: Branding.

QUANTITY: 1

PLACEMENT: Rear cover.



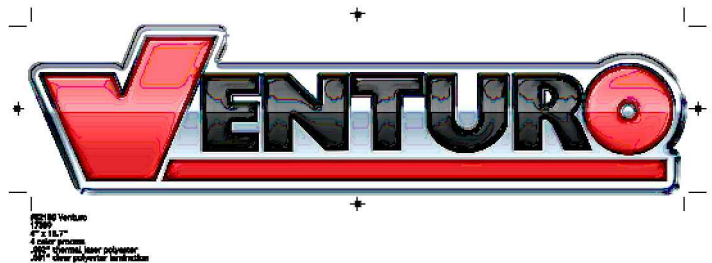
PART NO.: 22496

DECAL: LARGE VENTURO

FUNCTION: Branding.

QUANTITY: 2

PLACEMENT: Boom.



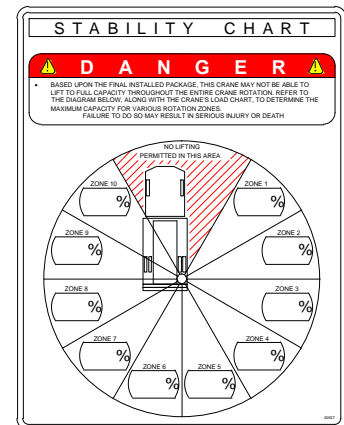
PART NO.: 20927

DECAL: CRANE STABILITY

FUNCTION: To inform the operator of the crane's lifting capacity throughout the entire rotation.

QUANTITY: 1

PLACEMENT: In prominent location, so it is easily seen and readily identifiable.



VENCO VENTURO INDUSTRIES LLC  
CINCINNATI, OHIO

TITLE  
**DECAL DRAWING & LIST**

HT40/50/60/66 SERIES

DATE  
11-30-22K

SUPERSEDES  
12-11-18J

SECTION  
C150

**22181D**

## LEFT SIDE OF BOOM

## RIGHT SIDE OF BOOM

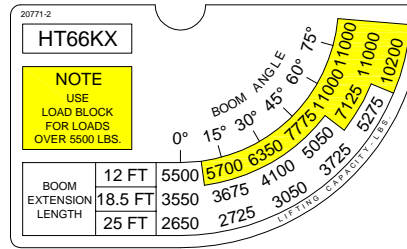
PART NO.: 20771-1 &amp; 20771-2

DECAL: HT66-25' CRANE CAPACITY

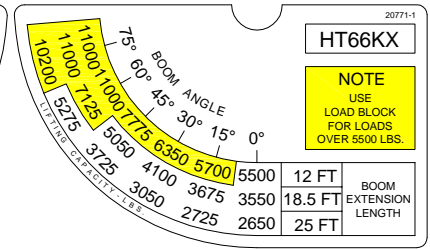
FUNCTION: To show the operator the operating capacities of the crane

QUANTITY: 1 each

PLACEMENT: Right side of boom, Left side of boom



20771-2



20771-1

## LEFT SIDE OF BOOM

## RIGHT SIDE OF BOOM

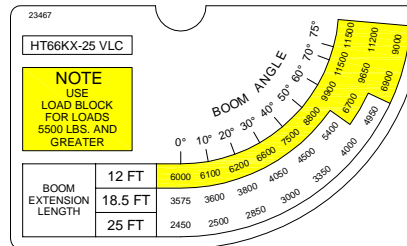
PART NO.: 23466 &amp; 23467

DECAL: HT66-25' CRANE CAPACITY (VLC)

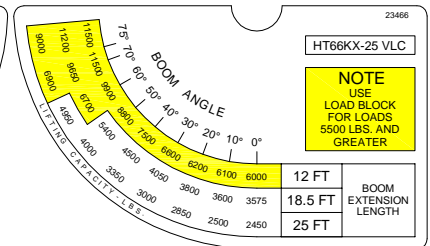
FUNCTION: To show the operator the operating capacities of the crane

QUANTITY: 1 each

PLACEMENT: Right side of boom, Left side of boom



23467



23466

SPACE INTENTIONALLY LEFT BLANK

SPACE INTENTIONALLY LEFT BLANK



VENCO VENTURO INDUSTRIES LLC  
CINCINNATI, OHIO

TITLE  
BOOM CAPACITY DECALS  
HT66KX SERIES

DATE  
02-06-19  
SUPERSEDES  
-

SECTION  
C150  
23804



PART NO.: 23742

DECAL: VLC, 2.94" x 6.00"

FUNCTION: To show that the crane is equipped with Venturo Logic Controls

QUANTITY: 2 each

PLACEMENT: Each side of Housing



S P A C E I N T E N T I O N A L L Y L E F T B L A N K

S P A C E I N T E N T I O N A L L Y L E F T B L A N K

S P A C E I N T E N T I O N A L L Y L E F T B L A N K



VENCO VENTURO INDUSTRIES LLC  
CINCINNATI, OHIO

TITLE	DATE	SECTION
VLC DECALS	02-06-19A	C150
VLC SERIES CRANES	SUPERSEDES 10-11-18	23748

# SECTION 200

# INSTALLATION



VENCO VENTURO INDUSTRIES LLC  
CINCINNATI, OHIO

# CRANE INSTALLATION, PAGE 1

## HT66KX-25' VLC SERIES

### BODY REINFORCEMENT

The truck body must be reinforced and outriggers provided to withstand the combined loads resulting from lifting and the weight of the crane and boom.

The maximum combined overturning moment for the HT66 VLC is 66,000 ft. lbs.

The maximum vertical load for the HT66 VLC is 14,000 lbs.

### CRANE MOUNTING

- ▲ The crane base plate or mounting pedestal must be bolted to the body reinforcing plate with four [4] grade eight (8) bolts of 1-1/8" dia. with either coarse or fine threads, torqued to 965 foot pounds. A 6" dia. hose clearance hole must be cut in this plate to allow the hoses to swing and coil freely.

### ROTATION POSITIONING

The HT cranes are shipped with the boom rotated as shown on drawing 20051. It can be in any position that pleases the user since the boom can always reach the storage and travel position by rotating one way or the other.

### HYDRAULIC CONNECTIONS

The crane is furnished with a pressure, return and a case drain hoses that come down through the center of the housing. The pressure and return hoses connect to two hydraulic swivels to prevent damage while rotating the crane right and left.



## C A U T I O N



- THE CASE DRAIN HOSE MUST BE A DEDICATED RETURN HOSE UNRESTRICTED TO TANK / RESERVOIR. DO NOT 'T' INTO ANOTHER EXISTING RETURN HOSE OR DAMAGE TO THE HYD. WINCH FROM BACK-PRESSURE WILL OCCUR. BACK-PRESSURE IN EXCESS OF 200 PSI WILL DAMAGE THE HYD. WINCH.

Arrange the pressure & return hoses in the compartment below the crane so that they are connected in a relaxed position while the crane is at the midpoint of the 400 degree rotation range -- regardless of the final position of the boom during storage/travel. See installation pages 22913 for more information on hose connections.

NOTE: If you purchased one of Venturo's hydraulic packages (P/N 19294-X.XXX), you will have received our pressure gauge kit. This kit includes a gauge, hose and bulkhead "T" fitting and should be installed on the main pressure hose.



VENCO VENTURO INDUSTRIES LLC  
CINCINNATI, OHIO

TITLE

CRANE INSTALLATION

HT66KX-25' VLC SERIES

DATE

03-16-23A

SUPERSEDES

02-06-19

SECTION

C200

23805

## CRANE INSTALLATION, PAGE 2

### HT60/66 VLC SERIES CRANES

#### ELECTRICAL CONNECTIONS

A 9 ft. electrical power lead - intended for 12V DC only - comes down through the center of the crane base plate along with the hoses. This power lead should be slacked in the compartment so that it remains relaxed throughout the 400 degree rotation of the crane.

A 20 amp circuit breaker is mounted on the crane and protects the crane's internal wiring and solenoid coils. The 20 amp circuit breaker does not protect the 9 ft. power lead. For added protection, the 9 ft. lead can be connected to a 20 amp protected circuit that, if possible, is powered only when the vehicle engine is running.

#### HYDRAULIC FLUID

<u>Average Climate</u>	<u>Type of Oil</u>
Cold to Moderate	ISO Grade AW 46
Warm to Hot	ISO Grade AW 68

The fluid should have the highest anti-wear characteristics and treated to inhibit rust and oxidation.

#### HYDRAULIC HOSES & LINES

The minimum sizes for lines and hoses are as follows:

HYDRAULIC LINES	HT66 SERIES
PRESSURE	5/8"
RETURN	3/4"
SUCTION	1-1/4"

#### RESERVOIR

The PTO reservoir should have a capacity of 40 gallons fitted with 100 mesh suction screen, 10 micron return line filter, and filler/breather cap.

#### PTO PUMP

The PTO pump should be sized to allow an engine idle speed range that will deliver approximately 12.0 GPM for the HT60/66 VLC series. The crane's relief pressure is set at 3000 psi on the HT60 and HT66.

#### PTO START-UP

Before connecting the PTO system to the crane pressure and return hoses, connect the PTO pressure and return lines together at the bulkhead. Assuming 12 gal./min. with a 40 gal. reservoir, operate the PTO system for 20-25 min. to flush out the lines and filter all fluid approximately seven times.

#### ENGINE START/STOP & THROTTLE CONTROL

If your crane was purchased with optional engine start/stop and throttle control, refer to drawing 22615 in the replacement parts section for further information.



VENCO VENTURO INDUSTRIES LLC  
CINCINNATI, OHIO

TITLE
CRANE INSTALLATION
HT60/66 VLC SERIES

DATE
11-10-22B
SUPERSEDES
05-10-21A

SECTION
C200
23806

# CRANE OPERATION AND MAINTENANCE INSTRUCTIONS ▲

## SAFETY

Before operating this crane, read and understand these instructions, the 920612 Crane Safety and Hazards Information Sheet, and review all safety & instruction labels on the crane.

## CRANE INSPECTION

Before operating this crane, inspect for wear, damage, or oil leakage. After the wire rope has been run out, check for wear, kinks, and broken strands. Check the hook and safety latch for damage. Correct any problems before using the crane.

***See Crane Safety Manual for proper inspection schedules and reports .***

## CAPACITY

Before operating this crane, review the capacity charts on the sides of the boom to relate the load to be lifted to the boom length and angle. The boom angle is shown by a gravity arrow.

## LOAD BLOCK ▲

If the load exceeds the single-line rated load or if reduced winching speed for better control of smaller loads is required, use the load block to rig the crane for two part line operation.

## CONTROLS ▲

The control pendant should be stored in a compartment or the cab when the crane is not in use.

Before activating the control pendant, inspect the cord(s) and pendant head/switches for damage. With the pendant OFF and the PTO disengaged, actuate all switches in both directions to verify that they all have the same feel/sound and return to the center position.

## PTO SYSTEM ▲

Check the hydraulic fluid level in the PTO system reservoir. Engage PTO and set the engine speed to provide the desired hydraulic flow rate per the PTO system instructions.

## CRANE OPERATION

Use "Winch Down" to release tension on the wire rope to unhook it from the storage tie down position.

Use "Boom Up" to elevate the boom from the boom rest position.

Avoid repeated rapid reversals of the control switches. This can cause the load to swing.

Check all control functions to see that they are working as described in the following section.



VENCO VENTURO INDUSTRIES LLC  
CINCINNATI, OHIO

TITLE

CRANE OP / MNTNC INST

DATE

08-08-23A

SECTION

C200

HT CRANES



SUPERSEDES

10-11-18

**23753**

## CRANE OPERATION AND MAINTENANCE INSTRUCTIONS, PAGE 2

### HT66KX VLC SERIES

#### CONTROL FUNCTIONS

- WINCH "UP" and "DOWN" - Raises and lowers the load with the winch.
- BOOM "UP" and "DOWN" - Raises and lowers the boom elevation angle. The boom elevates from 8 degrees below horizontal to 75 degrees above horizontal.
- BOOM "OUT" and "IN" - Extends and retracts the boom. The boom hydraulic extension stroke is 6 ft. or 10 ft.
- ROTATION "L" and "R" - Controls the left and right direction of the crane rotation. The crane rotation is limited to 400 degrees.
- TRIGGER (Proportional Systems Only) - Varies the flow rate delivered to the crane valve. The farther the trigger is pulled, the faster the selected crane function operates. See page 22168 for detailed operations instructions and warnings.

#### OVERLOAD SENSING SYSTEM

This crane is equipped with an Overload Sensing System. If the capacity of the crane is exceeded, the "Winch Up", "Boom Down", and "Boom Out" functions will be shut down. The "Winch Down", "Boom Up", and "Boom In" functions will continue to operate and can be used to relieve the overload condition. The "Rotation" function also will continue to operate.

#### VENTURO LOGIC CONTROL (VLC) SYSTEM

This crane is equipped with Venturo's logic control system. The receiver collects data from the boom tilt sensor and hydraulic pressure transducer, and translates the results to one of the following actions:

% OF LOAD	CRANE RESPONSE	BOOM/RECEIVER INDICATOR LIGHTS	TRANSMITTER LCD	TRANSMITTER VIBRATOR
0 - 79%	NORMAL OPERATION	Green solid	Load xx% Angle xx°	None
80% - 89%	NORMAL OPERATION	Yellow flashing	Load xx% Angle xx°	None
90% - 99%	All crane functions speed reduced to 50%	Red flashing	Load xx% Angle xx° flashing text SPD 50% icon	[3] quick vibrations when 90% threshold is exceeded
>100%	Winch down, boom retract, and rotation @ 75%. All other functions prevented.	Red solid	Overload Limited functions Speed reduced <small>Flashing text/inverted color - or after pressing OK button- Home Screen, flashing text/inverted color, SPD 25% icon</small>	Continuous vibration for [4] seconds when 100% threshold is exceeded

#### TWO-BLOCK SENSING SYSTEM

This crane is equipped with an anti two-block device that is mounted at the tip of the boom. If the load block / overhaul weight contacts the device the "Winch Up", "Boom Down", and "Boom Out" functions are disabled. The "Winch Down", "Boom Up", and "Boom In" functions will continue to operate and can be used to relieve the two-block condition.

#### TELESCOPIC HEXAGONAL BOOM - VLC SYSTEMS

12' - 25' LENGTH Double stage only

The hexagonal shaped boom shall telescope to provide a horizontal reach range of 12 ft. to 25 ft. using a hydraulic power extension cylinder with a 13 ft. stroke (See pages 23814 thru 23817).



VENCO VENTURO INDUSTRIES LLC  
CINCINNATI, OHIO

TITLE

CRANE OP / MNTNC INST

DATE

02-06-19

SECTION

C200

HT66KX VLC SERIES

SUPERSEDES

-

23808

## TRUCK SETUP & STABILIZERS

1. The truck should be parked on firm level ground.
2. The center of the crane should be positioned close enough to the job so that it can be operated at a reach that puts the load within the rated capacity of the crane.
3. Set the vehicle parking brake and put the vehicle transmission in "park" if it is an automatic.
4. Fully deploy stabilizers to help stabilize vehicle against rocking or overturning.
5. Use stabilizers to level vehicle only. Tires must maintain contact with ground.

## PREPARATION FOR TRAVEL

1. Return the stabilizers to the stowed position. Install and secure all pins.
2. Stow the crane boom in the boom support.
3. Hook the winch line to a tie down point on the body or pedestal and apply tension.
4. Disengage the PTO pump and idle speed control.
5. Power down the control pendant and store in a body compartment or the cab.

## MAINTENANCE

The crane requires only periodic lubrication. As a standard procedure, this can be done at the time the vehicle is serviced.

The winch planetary gearbox lube should be maintained at the level plug.

To ensure optimal winch performance, the following lube schedule and lube specifications should be followed:

Initial Change - after 6 weeks or 10 hours of operation.

Periodic Change - on an annual basis or every 50 hours of operation.

Temp Range (°F) Winch Gear Oil

120° to 10°	High quality SAE 90 gear lubricant oil
Severe Duty	Swepeco #201 multi-purpose gear oil

Service grease fittings and rotation gear with molybdenum-disulfide graphite-filled lithium-based extreme pressure grease.

Grease fitting locations:

- Boom pivot at rear of boom
- Speed reducer (2 fittings)
- Elevation cylinder tail clevis
- Bottom of Swing Bearing (2 fittings)

Remove rear cover and check all hydraulic tube and hose fittings for tightness.

Check electrical connections for looseness and corrosion.



VENCO VENTURO INDUSTRIES LLC  
CINCINNATI, OHIO

TITLE

CRANE OP / MNTNC INST

HT66KX VLC SERIES

DATE

02-06-19

SUPERSEDES

-

SECTION

C200

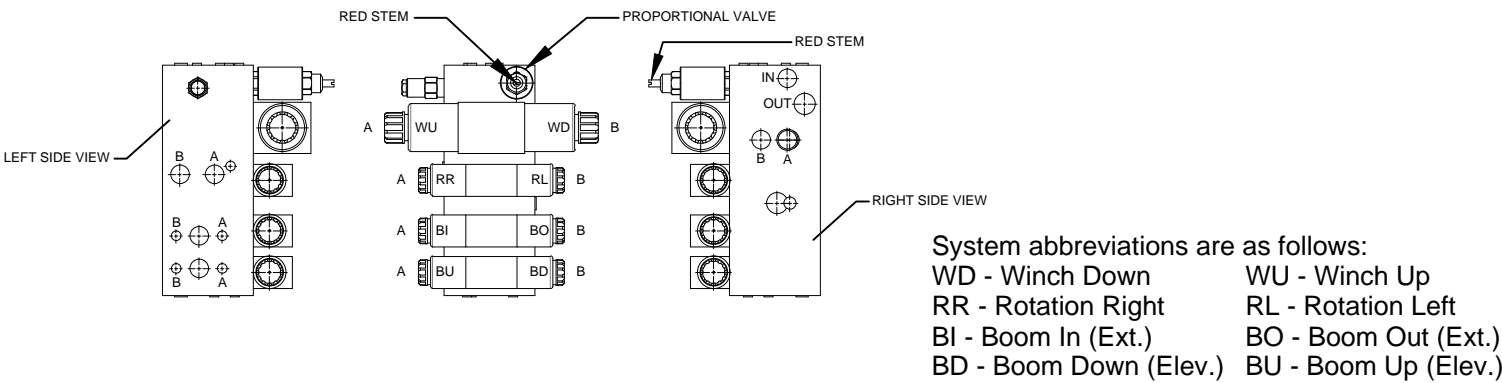
23809

EXPLANATION OF HYDRAULIC VALVE SYSTEM  
HT40/50/60/66KX, PROPORTIONAL ONLY

OVERVIEW

This proportional crane utilizes a proportional valve, which controls the rate at which the hydraulic fluid flows through the valve bank. When the proportional valve is fully closed, hydraulic fluid bypasses the valve bank and returns directly to the tank. When the proportional valve is fully open, hydraulic fluid cycles through the valve bank and allows the crane to function at full speed. When the proportional valve is at any setting between, a portion of the fluid is allowed through the valve bank, with the remainder returning to the tank.

The four [4] crane functions (winch, rotation, boom extension, and boom elevation) are controlled by four [4] separate valve sections. Each valve section has two [2] solenoid coils (and two [2] manual overrides) which control the direction that the function operates (e.g. winch up vs. winch down). For a given crane function and direction (e.g. winch up), the solenoid coil and associated manual override reside on the same side of the valve bank.



MANUAL OVERRIDE SYSTEM

Should an electrical failure occur, your Venturo crane can be operated manually.  
The manual overrides are intended for emergency use only and should not be used for normal operation.

To operate in manual override mode:

- (1) Override the proportional valve by turning the red stem on the valve as stated below
  - For override operation, rotate stem clockwise (the farther the stem is turned the faster the crane will operate)
  - To return to normal operation, rotate the stem counter-clockwise until it stops
- (2) Determine the coil / override associated with the function you wish to operate, then insert a small diameter object (an Allen wrench works well) into the detent on the end of the valve stem and firmly press inward. For example, pushing the stem labeled 'A' on the first bank (refer to illustration) will actuate winch up

**! W A R N I N G !**

- For normal crane operation, the proportional valve must be in the 'normal' position (as described above). To verify 'normal' operation, you may set the pendant (or radio) control aside and actuate a single crane function by pushing inward on any of the manual override pins, located at the ends of each function control valve. If that function operates, the proportional valve is still in manual override. Check the position of the proportional valve's red stem to insure that it is fully counter-clockwise.

EMERGENCY STOP

In the unlikely event that a function of the crane does not stop once the function's toggle switch is released, the proportional crane can be stopped by releasing the trigger on activating the red E-STOP button on the transmitter.



VENCO VENTURO INDUSTRIES LLC  
CINCINNATI, OHIO

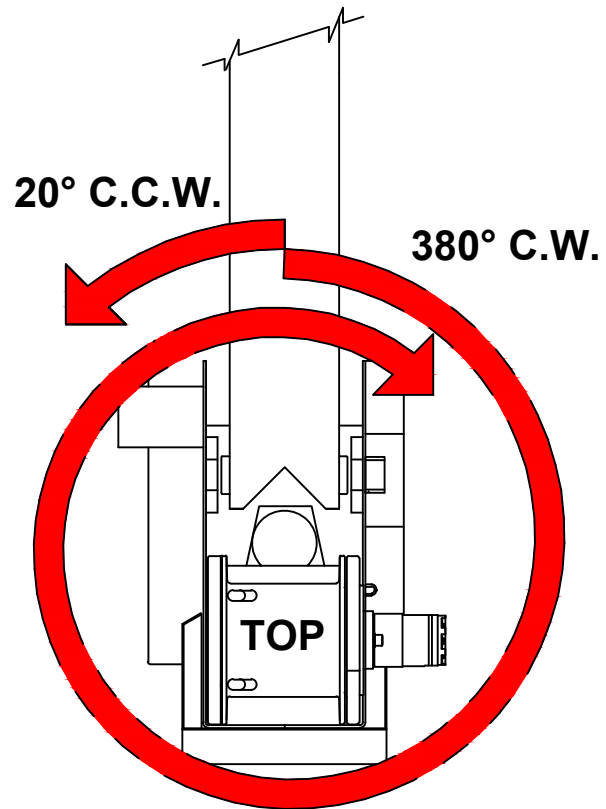
TITLE  
HYDRAULIC SYSTEM  
HT40/50/60/66KX; PROP

DATE  
11-10-22E  
SUPERSEDES  
02-21-14D

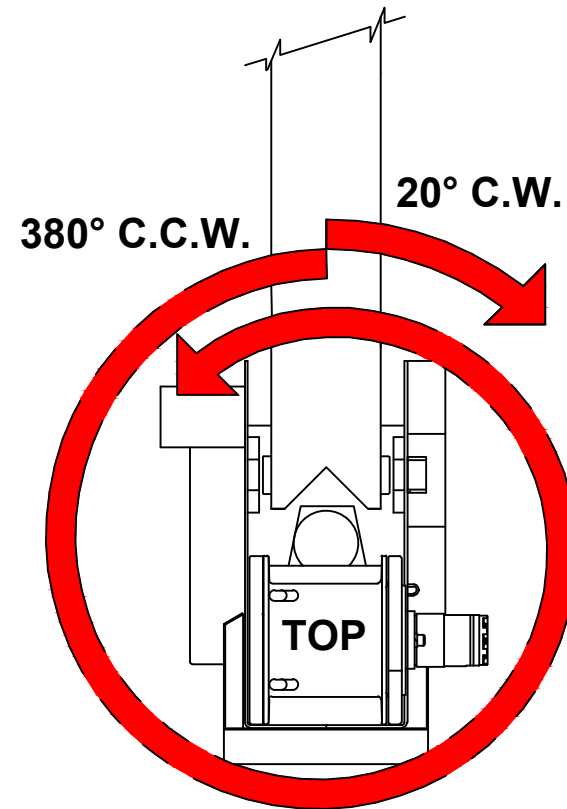
SECTION  
C200  
22168

# 400° ROTATION STOP LOCATION

CURBSIDE



STREETSIDE



VENCO VENTURO INDUSTRIES LLC  
CINCINNATI, OHIO

TITLE  
ROTATION STOP LOCATION

400° ROTATION CRANES

DATE  
03-09-23F

SUPERSEDES  
05-20-20E

SECTION  
C200

20051

# STABILITY TEST - HT66-25'-VLC SERIES

## Overview

Venturo follows the guidelines of ANSI B30.5 in defining stability. Generally speaking, a truck is considered stable as long as it is not on the verge of tipping - i.e. with the truck level, at least one tire on each corner of the truck must remain in contact with the ground.

It is important to note that nearly every installation is unique and will, therefore, typically require stability testing.

The procedure outlined below follows ANSI's (B30.5 - 5-1.1.1) specified "maximum load rating" of 85% of truck stability.

## Testing Procedure

1. Locate the truck on firm, level ground and set parking brake.
2. Fully deploy stabilizers, making sure they are firmly in contact with supportive ground; use stabilizer pads as required. The tires of the truck should remain in full contact with the ground.
3. Inspect wire rope and other key components of crane (consult owners manual for more information).
4. Conduct an operational check of all crane functions.
5. Use a **test weight** weighing a **minimum of 2882 lbs**, (includes load block weight of 67 lbs.) to a **maximum of 3050 lbs**.
6. Place the VLC system into **Stability Mode** (ref. VLC Manual, INST-30000, page 30005)
7. Position the boom level and fully retracted
8. Referring to the Stability Chart (drawing 20907) rotate the crane to a position between 1 and 2 o'clock (truck cab is facing 12 o'clock) to begin testing.
9. Use the winch to lift the Test Weight; DO NOT allow the weight to be more than 6" off the ground at any time during testing (for safety).
10. Using the test weight, extend the boom slowly, until one of the three conditions occur:
  - 10.1. Full extension is reached - Mark the ZONE in question **100%**
  - 10.2. The VLC system stops the boom extension - Mark the ZONE in question **100%**
  - 10.3. The truck becomes unstable i.e. a tire lifts off the ground
    - 10.3.1. Retract the boom until at least one tire on each corner of the truck is making contact with the ground
    - 10.3.2. Use the formula below to determine the allowable **% of Rated Capacity** for the ZONE in question:
11. Note: The "**Max Stable Reach in inches**" is measured from the **center of rotation** of the crane housing to the **lifting load hook**.
$$\% \text{ Rated Capacity} = \frac{\text{"Max Stable Reach" in inches}}{299} \times 100$$
12. Record the **% of Rated Capacity** in the appropriate blank (region) on the Crane Stability page (ref. 20907) and decal.
13. Repeat Steps 7 through 12 for each ZONE on the stability page.



VENCO VENTURO INDUSTRIES LLC  
CINCINNATI, OHIO

TITLE

STABILITY TEST

HT66-25'-VLC SERIES

DATE

02-28-23D

SUPERSEDES

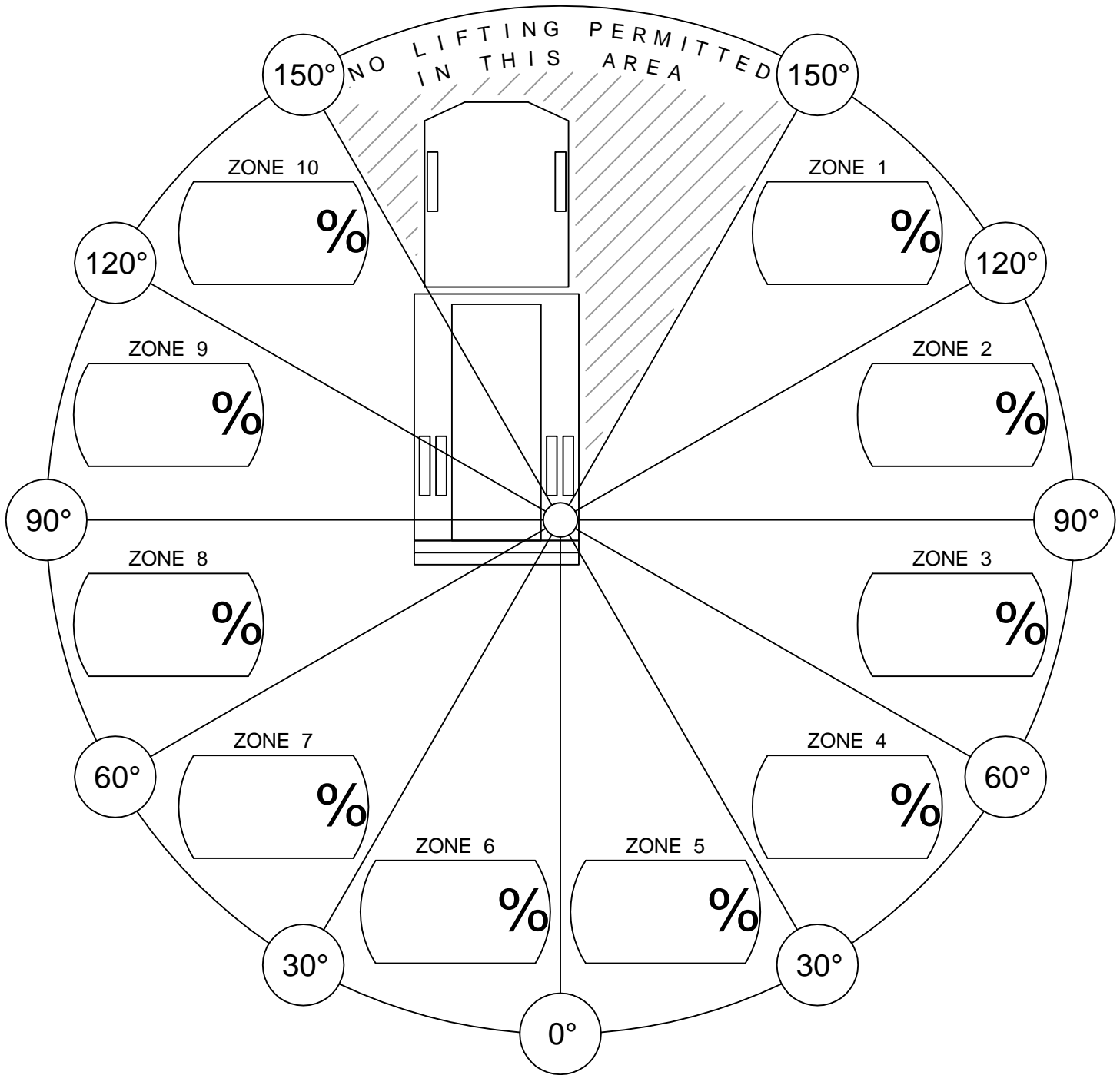
11-24-21C

SECTION

C200

20906-66V

# CRANE STABILITY



% of Rated Capacity for each of the 10 regions are provided above.

## CONDITIONS:

- STABILIZERS FULLY EXTENDED & DOWN, ON FIRM LEVEL GROUND.



VENCO VENTURO INDUSTRIES LLC  
CINCINNATI, OHIO

TITLE  
STABILITY CHART

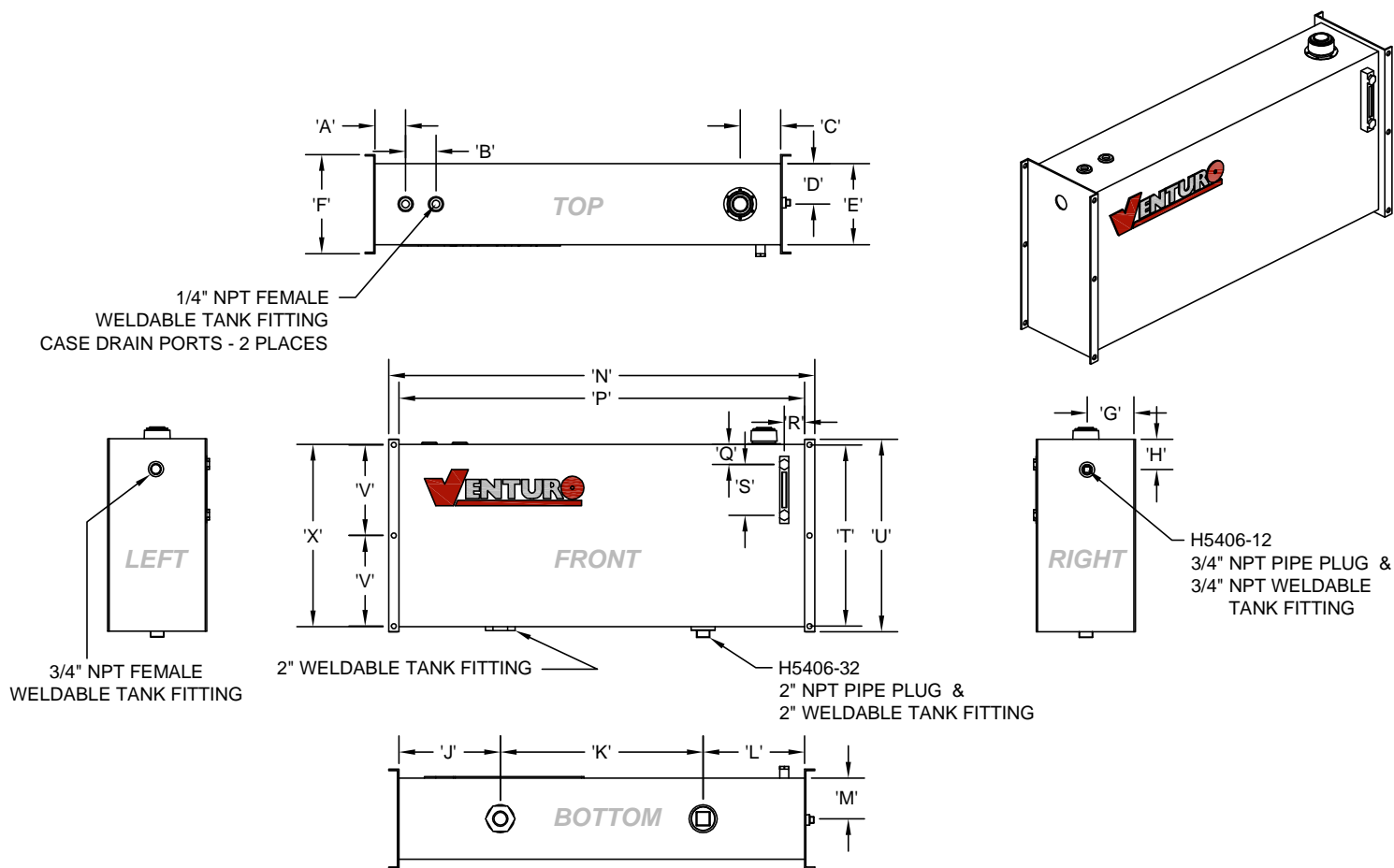
VENTURO CRANES

DATE  
05-11-17F

SUPERSEDES  
02-21-14E

SECTION  
C200

20907



ILLUSTRATIONS FOR REFERENCE ONLY!  
- COMPONENT LOCATIONS MAY DIFFER -

HYD. TANK DIMENSION (HTD) CHART

DIMENSION	PART NO.	22786 (25 GAL.)	22999 (40 GAL.)
'A'		3"	3"
'B'		3"	3"
'C'		4"	4"
'D'		4"	5.5"
'E'		8"	11"
'J'		5"	6"
'K'		30"	30"
'L'		5"	6"
'M'		4"	5.5"
'P'		40"	42"
'Q'		2"	2"
'R'		2"	2"
'S'		5"	5"
'X'		18"	20"

MEASUREMENTS EXCLUDE MOUNTING APARATUSES

MOUNTING DIMENSION (TMD) CHART

DIMENSION	PART NO.	22786 (25 GAL.)	22999 (40 GAL.)
'F'		9.75"	12"
'G'		4.875"	6"
'H'		3"	3"
'N'		42"	44"
'T'		17.875"	19.875"
'U'		19"	21"
'V'		8.938"	9.938"

MEASUREMENTS INCLUDE MOUNTING APARATUSES

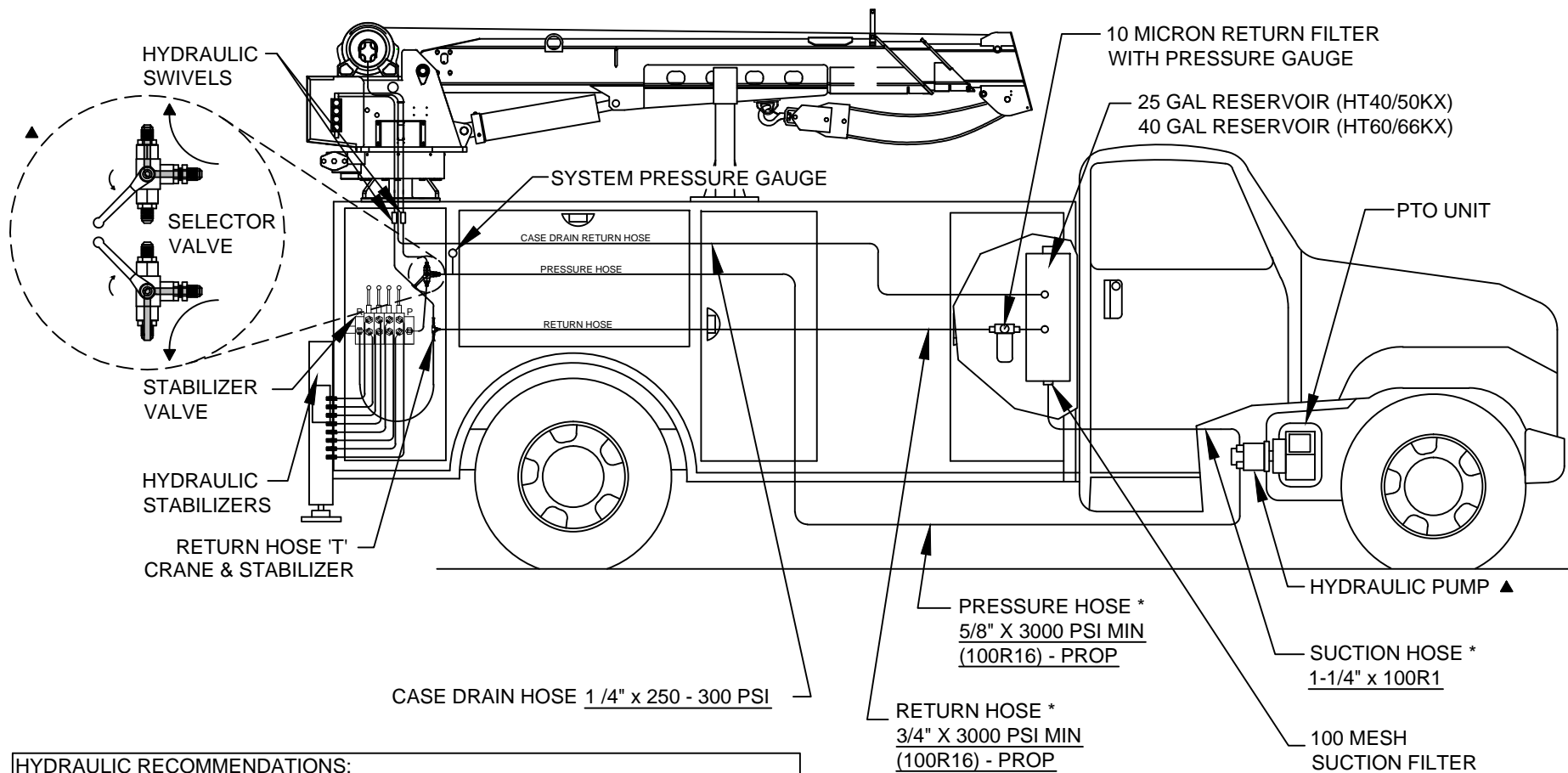


VENCO VENTURO INDUSTRIES LLC  
CINCINNATI, OHIO

TITLE  
**RESERVOIR DIMENSIONS**  
HYD. TANKS (25/40 GAL.)

DATE  
02-21-14E  
SUPERSEDES  
06-04-13D

SECTION  
C200  
**22825**



#### HYDRAULIC RECOMMENDATIONS:

- HT40KX PROPORTIONAL - 12.0 GPM @ 3000 PSI (22784 PTO PACKAGE)
- HT50KX PROPORTIONAL - 12.0 GPM @ 3000 PSI (22784 PTO PACKAGE)
- HT60KX PROPORTIONAL - 12.0 GPM @ 3000 PSI (22998 PTO PACKAGE)
- HT66KX PROPORTIONAL - 12.0 GPM @ 3000 PSI (22998 PTO PACKAGE)



## CAUTION

- SELECTOR VALVE MUST BE 'NON-CLOSED CENTER TRANSITION' TYPE.

REFER TO SECTION 200 FOR MORE INFORMATION ON INSTALLING HYDRAULIC COMPONENTS.

\* HOSES AND FITTINGS BETWEEN PUMP, RESERVOIR, AND CRANE *NOT INCLUDED*.



## CAUTION

- THE CASE DRAIN LINE FROM THE WINCH MUST HAVE AN UNRESTRICTED PATH TO TANK/ RESERVOIR.



VENCO VENTURO INDUSTRIES LLC  
CINCINNATI, OHIO

TITLE

HYDRAULIC COMPONENT INSTALLATION

HT40-66, PROPORTIONAL

DATE

08-08-23G

SUPSEDES

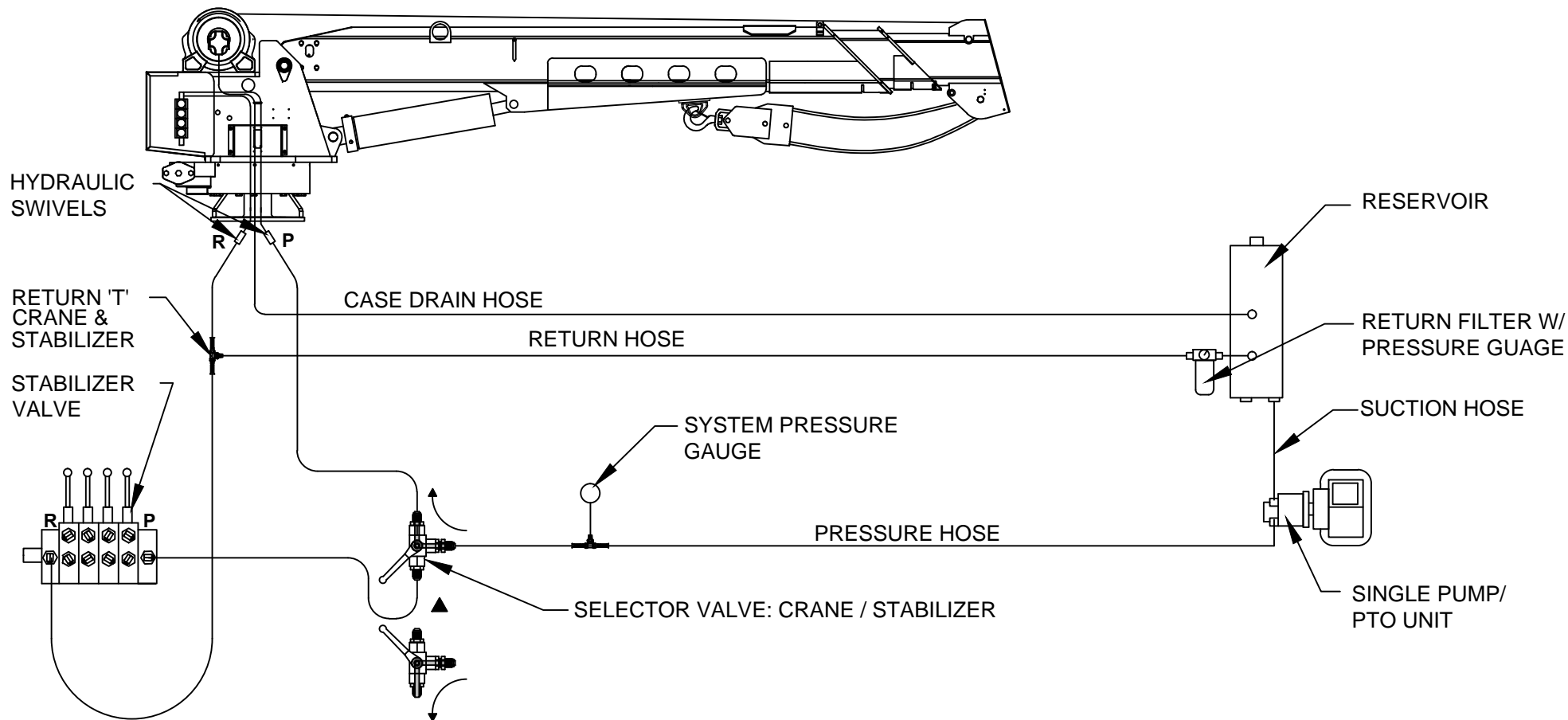
11-10-22F

SECTION

C200

22883

# HYDRAULIC CIRCUIT CONNECTION GUIDE - SINGLE PUMP (NO COMPRESSOR) (REFER TO SECTION 200 FOR MORE INFORMATION, INCLUDING HOSE SPECIFICATIONS)



## CAUTION

- SELECTOR VALVE MUST BE 'NON-CLOSED CENTER TRANSITION' TYPE.



## CAUTION

- THE CASE DRAIN LINE FROM THE WINCH MUST HAVE AN UNRESTRICTED PATH TO TANK/ RESERVOIR.



VENCO VENTURO INDUSTRIES LLC  
CINCINNATI, OHIO

TITLE

CONNECTION GUIDE, PAGE 1 / 2

HT CRANES

DATE

08-09-23C

SUPERSEDES

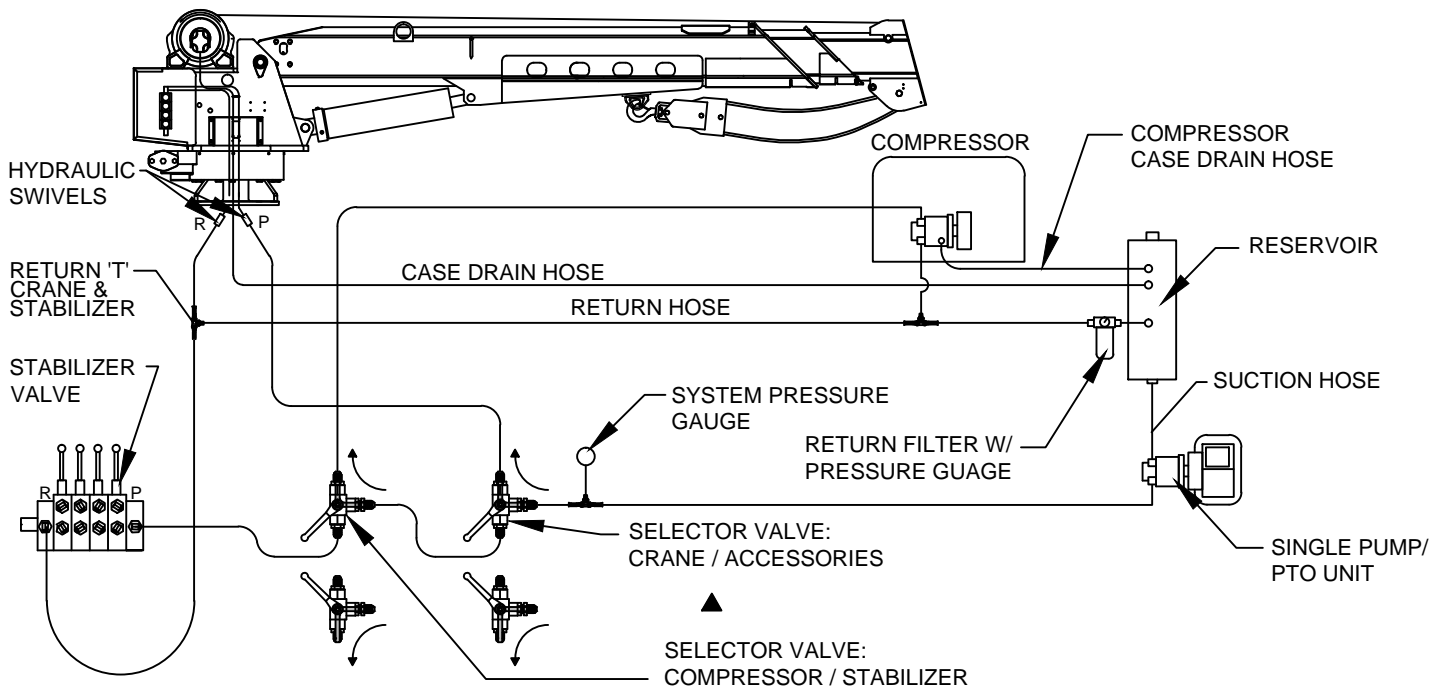
02-21-14B

SECTION

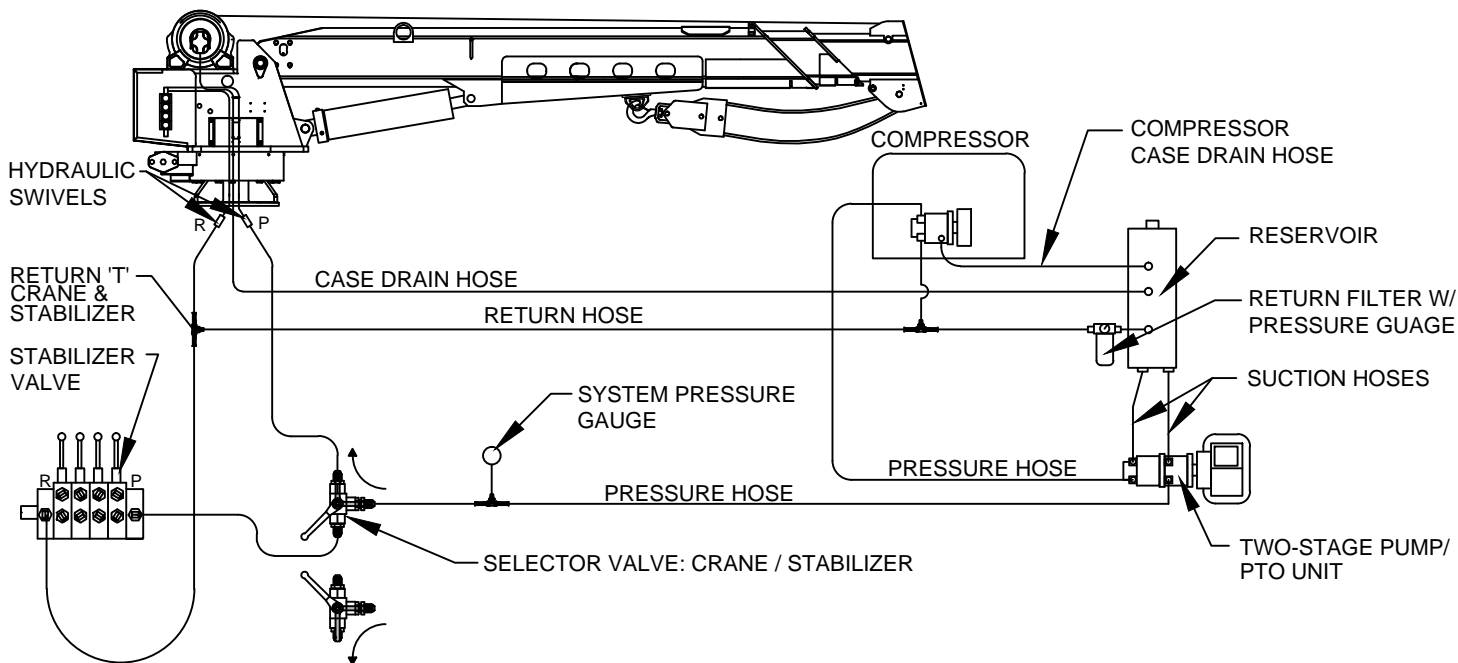
C200

23015

## HYDRAULIC CIRCUIT CONNECTION GUIDE - SINGLE PUMP W/ COMPRESSOR



## HYDRAULIC CIRCUIT CONNECTION GUIDE - TWO-STAGE PUMP W/ COMPRESSOR



### CAUTION

- SELECTOR VALVE MUST BE 'NON-CLOSED CENTER TRANSITION' TYPE.

REFER TO SECTION 200 FOR MORE INFORMATION, INCLUDING HOSE SPECIFICATIONS



### CAUTION

- THE CASE DRAIN LINE FROM THE WINCH MUST HAVE AN UNRESTRICTED PATH TO TANK/ RESERVOIR.



VENCO VENTURO INDUSTRIES LLC  
CINCINNATI, OHIO

TITLE  
CNNCTN GDE, PAGE 2/2

HT CRANES

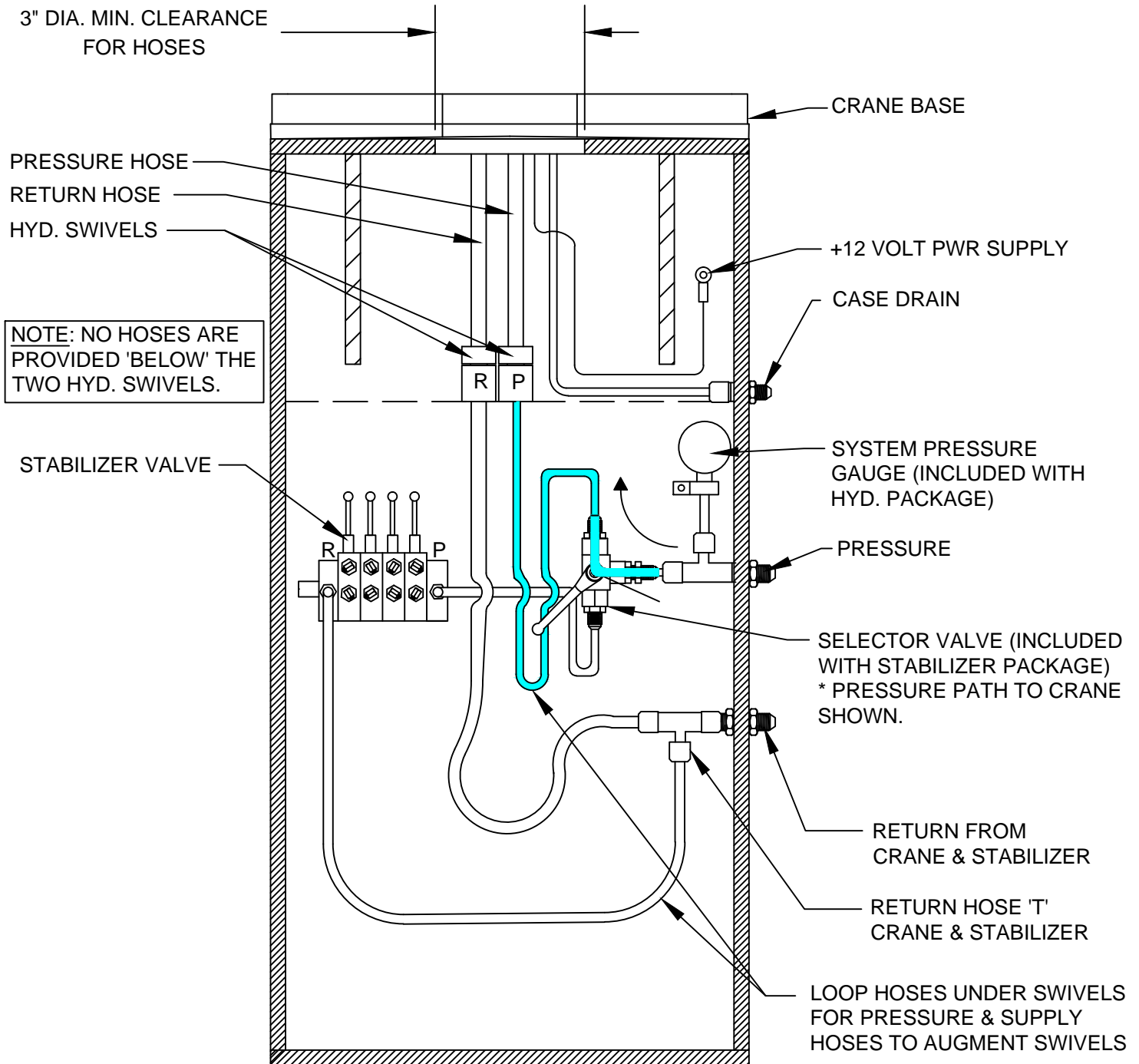
DATE  
08-08-23C

SUPERSEDES  
02-21-14B

SECTION  
C200

23014

# RECOMMENDED SUPPLY & RETURN HOSE CONNECTIONS CRANE & STABILIZERS



## CAUTION

- SELECTOR VALVE MUST BE 'NON-CLOSED CENTER TRANSITION' TYPE VALVE.



## CAUTION

- CASE DRAIN MUST RETURN DIRECTLY TO RESERVOIR WITHOUT RESTRICTION.



VENCO VENTURO INDUSTRIES LLC  
CINCINNATI, OHIO

TITLE  
CONNECTIONS GUIDE

HT CRANES

DATE  
08-07-23G

SUPERSEDES  
02-21-14F

SECTION  
C200

22913

# WIRE ROPE INSTALLATION

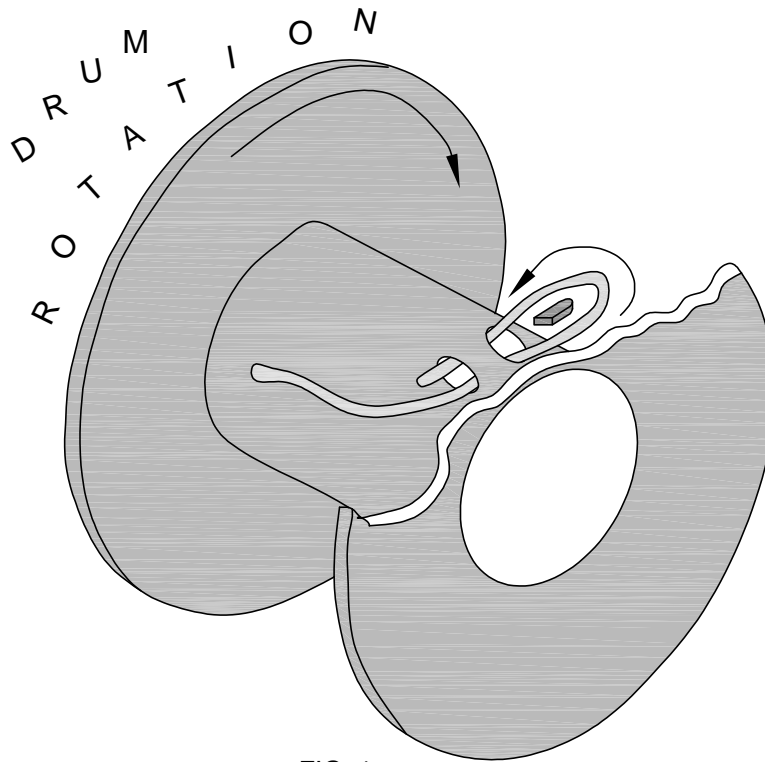


FIG. 1

- STEP 1:** UNWIND COIL OF WIRE ROPE BY 'ROLLING' ALONG THE FLOOR. THIS WILL PREVENT 'KINKING'.
- STEP 2:** INSERT WIRE ROPE END UP THROUGH ANTI-2-BLOCK (A2B) CAGE ASSEMBLY, BETWEEN CHEEK PLATES, OVER THE TOP SHEAVE, AND THROUGH WIRE ROPE GUIDE.
- STEP 3:** INSERT WIRE ROPE END INTO POCKET OPENING ON WINCH, WRAP AROUND WEDGE, AND BACK THROUGH POCKET OPENING AS SHOWN IN FIGURE 1.



## CAUTION

- IF THE WIRE ROPE IS NOT INSTALLED FOR THE CORRECT DRUM ROTATION, THE WINCH BRAKE VALVE WILL NOT HOLD THE LOAD.



## CAUTION

- THERE MUST ALWAYS BE AT LEAST [5] DEAD WRAPS OF WIRE ROPE ON THE WINCH DRUM WHILE UNDER LOAD.

**NOTE:** SOME WINCHES MAY BE SUPPLIED WITH A HEX NUT IN LIEU OF A WEDGE FOR INSTALLING THE WIRE ROPE.



VENCO VENTURO INDUSTRIES LLC  
CINCINNATI, OHIO

TITLE

WIRE ROPE INSTALLTN

ET6K & LARGER CRANES

DATE

02-21-14K

SUPERSEDES

12-26-13J

SECTION

C200

22245

# **SECTION 300**

# **MAINTENANCE**

# **&**

# **SERVICE**



VENCO VENTURO INDUSTRIES LLC  
CINCINNATI, OHIO

# MAINTENANCE OVERVIEW INFORMATION

## MAINTENANCE

The crane requires only periodic lubrication. As a standard procedure, this can be done at the time the vehicle is serviced.

## GENERAL

Inspect wire rope for any evidence of kinks or fraying. Ensure that lifting hook of wire rope shows no evidence of damage and is functioning normally.

Inspect headache ball ("load block") for any signs of damage or excessive wear.

Service all grease fitting locations.

Inspect hydraulic hoses and hydraulic fittings for hydraulic leaks.

Inspect electrical connections for any looseness or corrosion.

Inspect bolts and verify all are tight, paying particular attention to winch, rotation system, and mounting base bolts.

Inspect all pins and snap rings for proper fit and function.

Inspect sheaves for excessive wear or play.

Perform a basic inspection of the winch with each use, monitoring for unusual noise or hydraulic leaks.

The winch planetary gearbox lube (SAE 90) should be maintained at the level plug (final base relief valve port) which is approximately half-full point.

To ensure optimal performance, the following oil change schedule should be followed:

Initial Change - after the initial 100 hours of operation or six months.

Periodic Change - after every 300 hours of operation or two years.

Temp Range (°F)	Winch Gear Oil
120° to 10°	High quality SAE 90 gear lubricant oil
Severe Duty	Swepeco #201 multi-purpose gear oil



VENCO VENTURO INDUSTRIES LLC  
CINCINNATI, OHIO

TITLE

MAINTENANCE INFO

DATE

11-10-22D

SECTION

C300

HT25/30/40/50/60/66KX(P)

SUPERSEDES

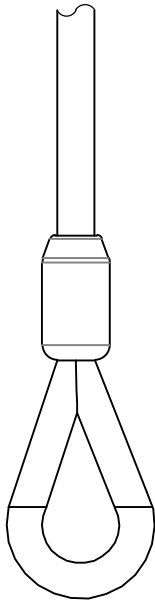
02-21-14C

23203

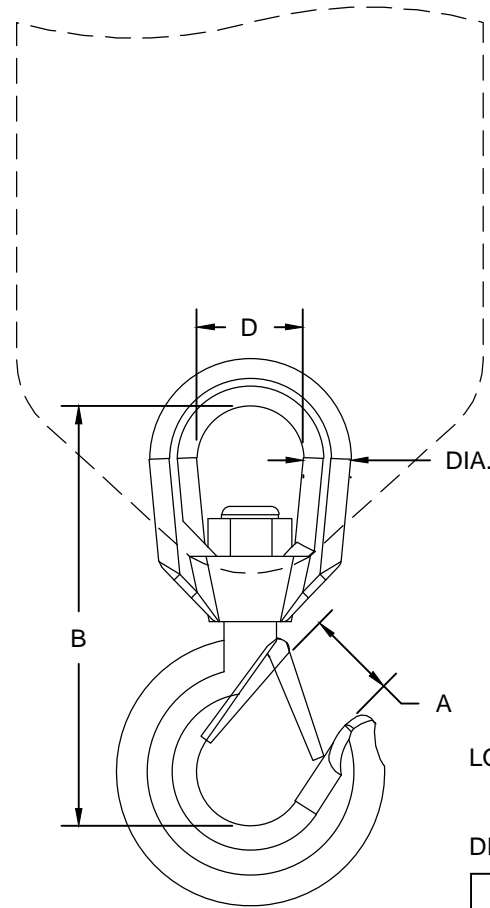
## WIRE ROPE ASSEMBLY

### WIRE ROPE:

- 7/16" DIA, 100' LONG
- DRAWN GALVANIZED STEEL WIRE ROPE; 6 X 26 WS-IWRC, EIPS, RHRL, SB 20,400 LBS
- TERMINATES IN THIMBLE
- NO HOOK



## LOAD BLOCK ASSEMBLY



### LOAD BLOCK HOOK:

RATING: 7 METRIC TONNES (15,432 LBS)

### DIMENSIONS:

A	B	D	DIA.
1.61"	9.63"	2.50"	1.00"



VENCO VENTURO INDUSTRIES LLC  
CINCINNATI, OHIO

### TITLE

WIRE ROPE & HOOK SPECIFICATIONS

HT66KX

### DATE

11-23-22C

### SUPERSEDES

05-09-16B

### SECTION

C300

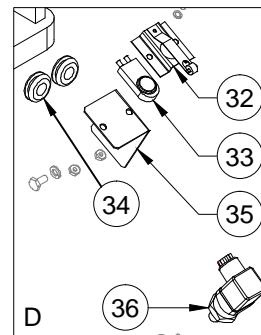
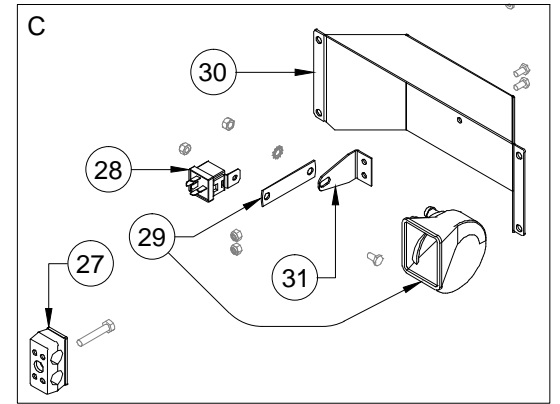
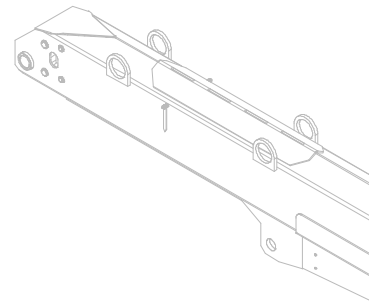
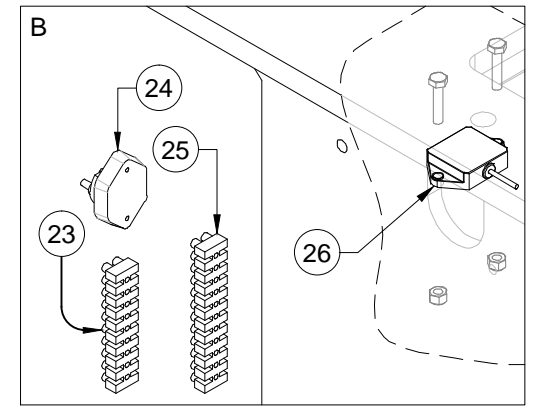
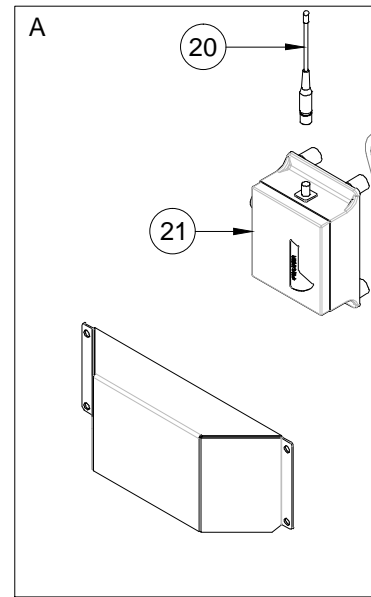
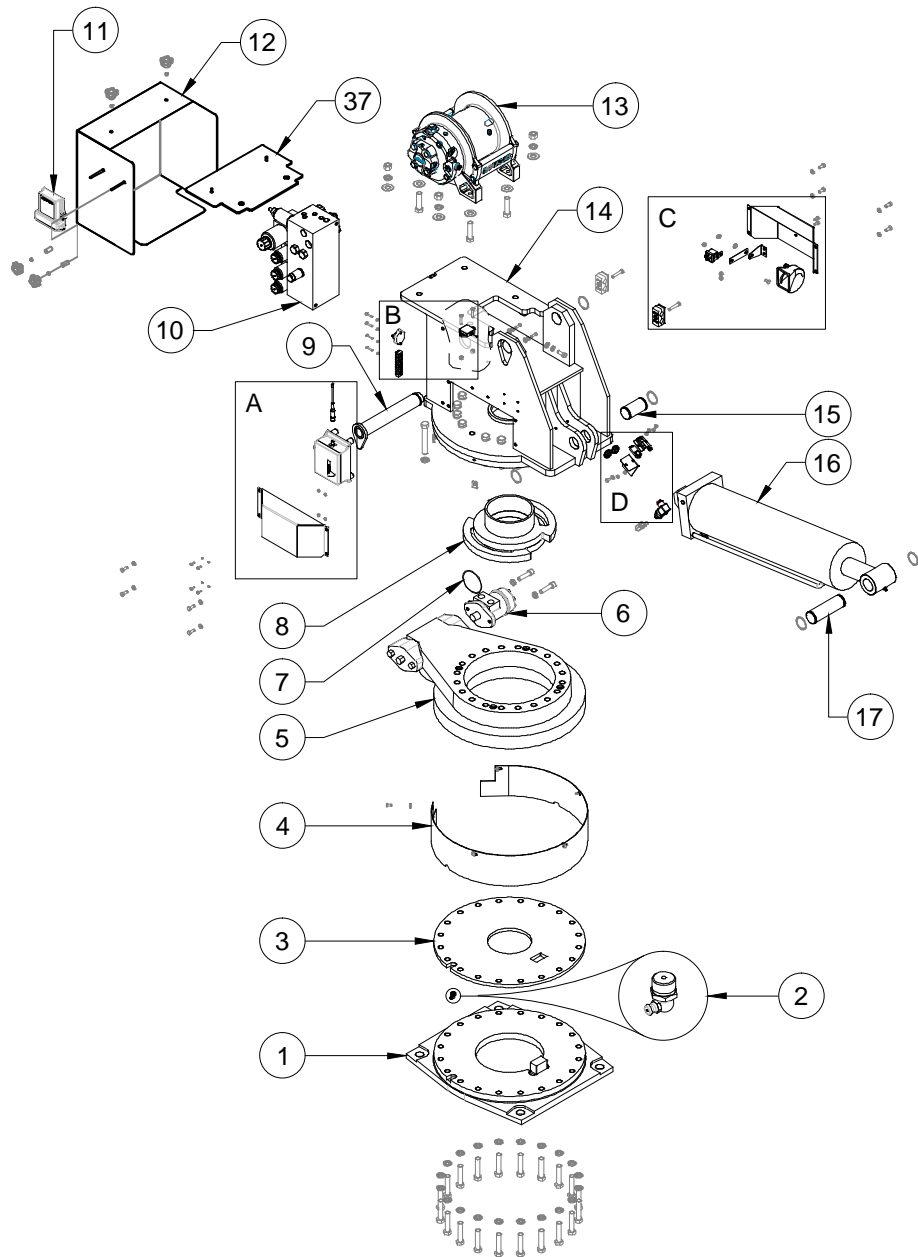
23232

# **SECTION 400**

## **REPLACEMENT PARTS**



VENCO VENTURO INDUSTRIES LLC  
CINCINNATI, OHIO



REFERENCE #23811 FOR REPLACEMENT PARTS LIST



VENCO VENTURO INDUSTRIES LLC  
CINCINNATI, OHIO

TITLE  
REPLACEMENT PARTS DRWG - MECHANISM  
HT66KX VLC SERIES

DATE  
03-09-23C  
SUPERSEDES  
05-17-22B

SECTION  
C400  
23810

# REPLACEMENT PARTS LIST - HT66KX VLC SERIES; MECHANISM

ITEM	PART NO.	QTY	DESCRIPTION
1	27708	1	WELDED ASS'Y; BASE
2	IZERK-NPT-90	1	FITTING; GREASE, 90°
3	27710	1	PLATE; SPACER
4	27406	1	COVER; SLEWING RING
5	27275	1	SLEWING RING
6	27276	1	MOTOR; HYDRAULIC ROTATION
7	OR-152-5	1	O-RING; ROTATION MOTOR
8	27296	1	ASS'Y; ROTATION STOP
9	22721	1	PIN; MAIN BOOM PIVOT
10	22736H-1	1	VALVE MANIFOLD
* 11	23720-VCN	1	* VALVE CONTROL MODULE
12	27505	1	COVER; REAR, 1-PC
13	27274	1	WINCH
14	27284	1	WELDED ASS'Y; HOUSING
15	27502	1	PIN; ELEVATION CYLINDER PIVOT, INBOARD
16	21750	1	CYLINDER; ELEVATION, 6" X 20-1/8", DA
17	27503	1	PIN; ELEVATION CYLINDER PIVOT, OUTBOARD
18	-	-	-
19	-	-	-
* 20	23720-ANT	1	* ANTENNA

ITEM	PART NO.	QTY	DESCRIPTION
* 21	23720-RX	1	* RECEIVER; ESCAN, 2.4GHz
22	-	-	-
23	19187-10	1	TERMINAL STRIP; 10 SECTIONS
24	15683-20A	1	CIRCUIT BREAKER; 20 AMP
25	19187-12	1	TERMINAL STRIP; 12 SECTIONS
* 26	23720-INC	1	* UNIVERSAL INCLINOMETER
27	27307	2	CLAMP ASS'Y; HOSE / TUBING
28	22739	1	RELAY; HIGH CAPACITY
29	2948	1	HORN
30	27400	2	COVER; SIDE W/ HORN BRACKET HOLES
31	22000	1	BRACKET; HORN
32	19917	1	BRACKET; BOOM SHUT-OFF SWITCH
33	19918	1	SWITCH; BOOM TOP POSITION
34	14775	2	GROMMET; 1/2 x 3/16 x 3/16" THICK
35	20497	1	BRACKET; SWITCH
* 36	23720-PTD	2	* PRESSURE TRANSDUCER
37	28273	1	REAR COVER MOUNTING PLATE, WELDED ASS'Y
38			
39			
40			

\* THESE ITEMS ARE INCLUDED IN 23720 KIT. PLEASE CALL TECHNICAL SUPPORT AT 1-800-226-2238 FOR ASSISTANCE.

REFERENCE #23810 FOR REPLACEMENT PARTS DRAWING



VENCO VENTURO INDUSTRIES LLC  
CINCINNATI, OHIO

TITLE

REPLACEMENT PARTS LIST - MECHANISM

HT66KX VLC SERIES

DATE

03-09-23B

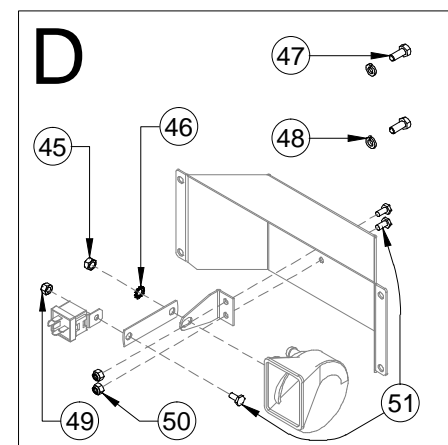
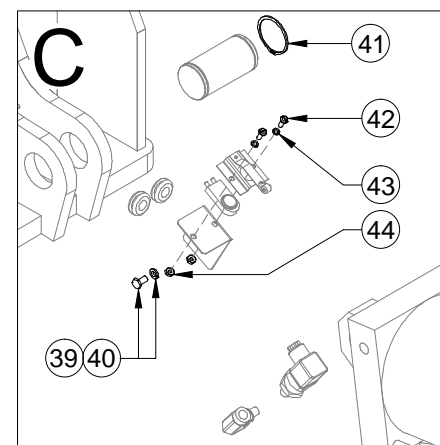
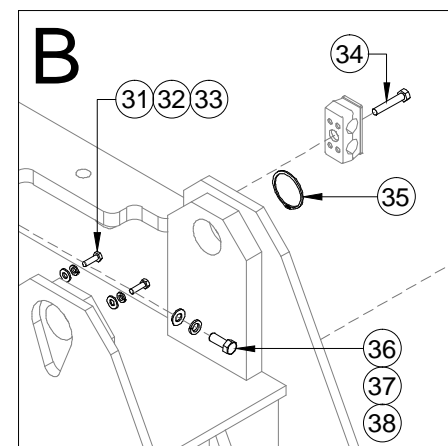
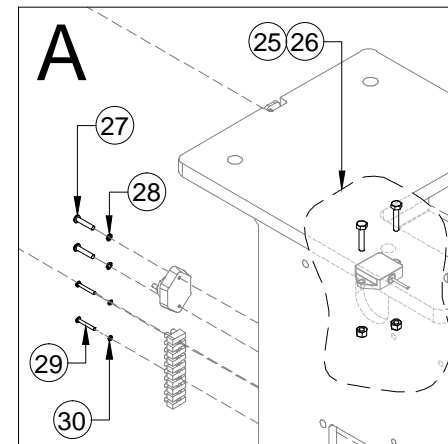
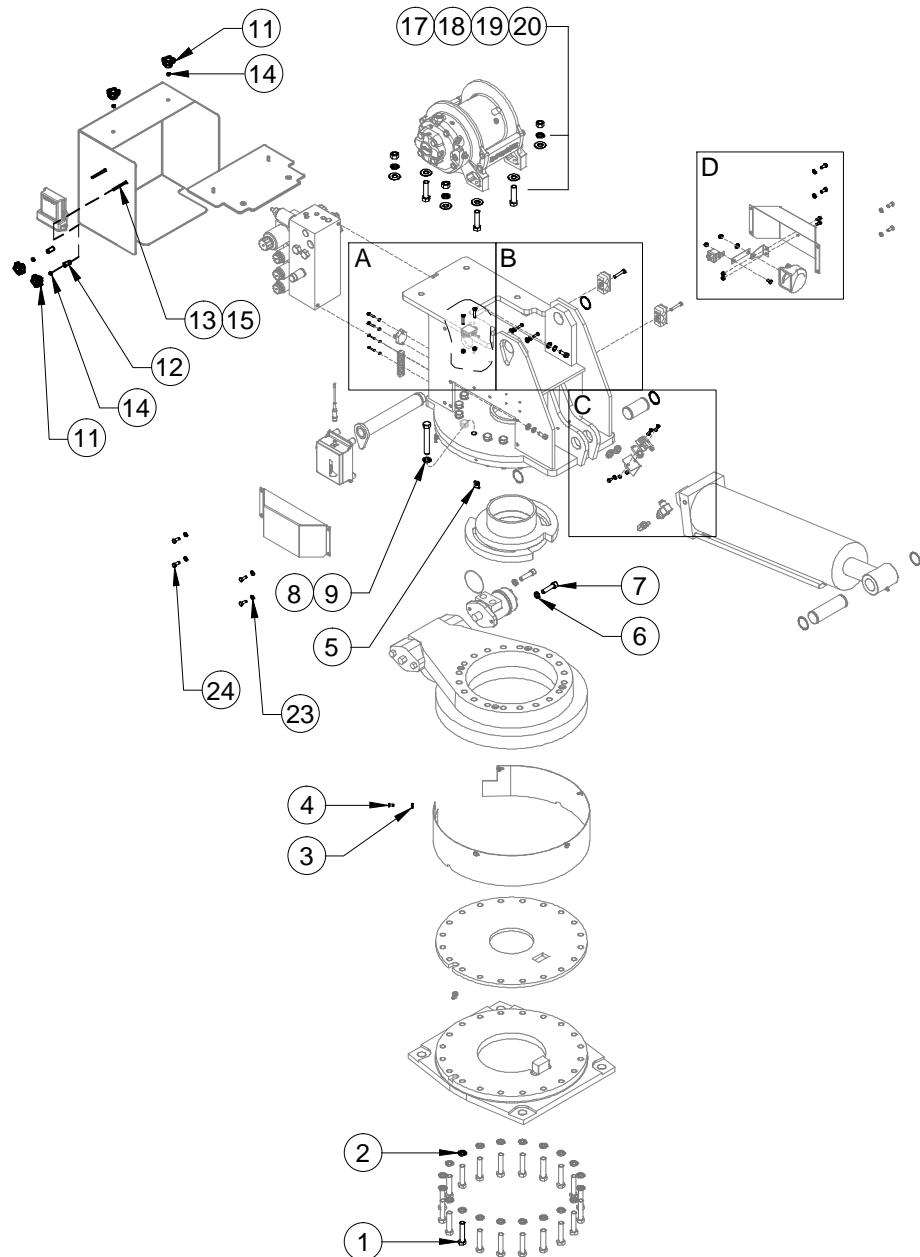
SUPERSEDES

05-17-22A

SECTION

C400

23811



REFERENCE #23813 FOR REPLACEMENT FASTENERS LIST



VENCO VENTURO INDUSTRIES LLC  
CINCINNATI, OHIO

TITLE  
REPLACMENT FASTENERS DRWNG - MECH  
HT66KX VLC SERIES

DATE  
03-09-23D  
SUPERSEDES  
06-24-22C

SECTION  
C400  
23812

ITEM #	PART #	QTY	DESCRIPTION	WHERE-USED
1	!HHCS06311300	20	HHCS; 5/8-11 x 3" LG, GR. 5, ZINC	BASE PLATE - SLEW DRV
2	!LWSH-063	20	LOCK WASHER; 5/8", GR. 5, ZINC	BASE PLATE - SLEW DRV
3	!FWSH-25S	5	FLAT WASHER; 1/4", S/S	ROTATION GEAR COVER
4	!HHCS02520050S	5	HHCS; 1/4-20 x 1/2" LG, S/S	ROTATION GEAR COVER
5	!UNUT-02520-LKG	5	U-NUT; 1/4-20, LOCKING	ROTATION GEAR COVER
6	!LWSH-050-HC	2	LOCK WASHER; 1/2", HI-COLLAR	ROTATION MOTOR
7	!SHCS05013200	2	SHCS; 1/2-13 X 2"	ROTATION GEAR COVER
8	!HHCS06311400	20	HHCS; 5/8-11 x 4" LG, GR. 5, ZINC	HSNG - ROTATION DRV.
9	!LWSH-063	20	LOCK WASHER; 5/8", GR. 5, ZINC	HSNG - ROTATION DRV.
10	-	-	-	-
11	28327	4	KNOB, HAND, 5-POINT	VCM & REAR COVER
12	28328	2	NYLON SPACER, .25" ID X .5" OD X 1"	VCM TO REAR COVER
13	!HHCS02520250SF	2	HHCS; 1/4-20 X2.50", S/S, FULL THRD	VCM TO REAR COVER
14	!LNUT-02520-H	4	LOCK NUT; 1/4-20, HVY PAT, NYLON	VCM & REAR COVER
15	!JNUT-02520NS	2	JNUT, NYLON INSERT, 1/4-20, S/S	VCM TO REAR COVER
16	!FWSH-025S	2	FLAT WASHER; 1/4", S/S	RECEIVER - REAR CVR
17	!HHCS06311250-8	4	HHCS; 5/8-11 X 2-1/2" LG, GR. 8	WINCH MOUNTING
18	!FWSH-063-8	8	FLAT WASHER; 5/8", GR. 8	WINCH MOUNTING
19	!LWSH-063-8	4	LOCK WASHER; 5/8", GR. 8	WINCH MOUNTING
20	!HNUT-06311-8	4	HEX NUT; 5/8-11, GR. 8	WINCH MOUNTING
21	-	-	-	-
22	-	-	-	-
23	!HHCS03118075S	4	HHCS; 5/16-18 X 3/4", S/S	SIDE COVER
24	!LWSH-031S	4	LOCK WASHER; 5/16", S/S	SIDE COVER
25	!HHCS02520125S	2	HHCS; 1/4-20 X 1-1/4", S/S	INCLINOMETER
26	!LNUT-02520NS	2	LOCK NUT; 1/4-20, NYLON, S/S	INCLINOMETER

ITEM #	PART #	QTY	DESCRIPTION	WHERE-USED
27	!PHPMS#1024100S	2	PHILIPS-HD PMS; #10-24 X 1", S/S	CIRCUIT BRKR - HSNG
28	!LWSH-#10S	2	LOCK WASHER; #10, S/S	CIRCUIT BRKR - HSNG
29	!PHPMS#0632100S	2	PHILIPS-HD PMS; #6-32 X 1", S/S	TERMINAL STRIP - HSNG
30	!LWSH-#06S	2	LOCK WASHER; #06, S/S	TERMINAL STRIP - HSNG
31	!HHCSM6M1M16S	4	HHCS; 6mm-1mm X 16mm, S/S	ESCAN - HOUSING
32	!LWSH-025S	4	LOCK WASHER; 1/4", S/S	ESCAN - HOUSING
33	!FWSH-025S	4	FLAT WASHER; 1/4", S/S	ESCAN - HOUSING
34	!HHCS03118175S	2	HHCS; 5/16-18 X 1-3/4", S/S	HOSE CLAMPS - HSNG
35	!SRNG-175	1	SNAP RING; 1-3/4", ZINC-PLTD	MAIN BOOM PIVOT PIN
36	!HHCS03816100	2	HHCS; 3/8-16 X 1", ZINC-PLTD	MANIFOLD - HOUSING
37	!FWSH-038	2	FLAT WASHER; 3/8", ZINC-PLTD	MANIFOLD - HOUSING
38	!LWSH-038	2	LOCK WASHER; 3/8", ZINC-PLTD	MANIFOLD - HOUSING
39	!HHCS02520050S	1	HHCS; 1/4-20 x 1/2", S/S	SWITCH BRKT - HSNG
40	!LWSH-025S	1	LOCK WASHER; 1/4", S/S	SWITCH BRKT - HSNG
41	!SRNG-150	4	SNAP RING; 1-1/2", ZINC-PLTD	ELEV. CYL. PIVOTS
42	!PHPMS#1024050S	2	PHILIPS-HD PMS; #10-24 X 1/2", S/S	SWITCH & SWITCH BRKT
43	!LWSH-#10S	2	LOCK WASHER; #10, S/S	SWITCH & SWITCH BRKT
44	!HNUT-#1024S	2	HEX NUT; #10-24, S/S	SWITCH & SWITCH BRKT
45	!HNUT-03120	1	HEX NUT; 5/16-20, ZINC	HORN - HORN BRKT
46	!LWSH-031-STAR	1	LOCK WASHER; 5/16", ZINC	HORN - HORN BRKT
47	!HHCS03118075S	4	HHCS; 5/16-18 X 3/4", S/S	SIDE COVER
48	!LWSH-031S	4	LOCK WASHER; 5/16", S/S	SIDE COVER
49	!LNUT-02520NS	1	LOCK NUT; 1/4-20, NYLON, S/S	RELAY - BRACKET
50	!LNUT-02520NS	2	LOCK NUT; 1/4-20, NYLON, S/S	RELAY-HORN - SIDE CVR
51	!HHCS02520050S	3	HHCS; 1/4-20 X 1/2", S/S	RELAY, BRKT - SIDE CVR
52	-	-	-	-

REFERENCE #23812 FOR REPLACEMENT FASTENERS DRAWING

HHCS = HEX HEAD CAP SCREW PMS = PAN MACHINE SCREW S/S = STAINLESS STEEL



VENCO VENTURO INDUSTRIES LLC  
CINCINNATI, OHIO

TITLE

PLCMNT FASTENERS LIST - MECHANISM

HT66KX VLC SERIES

DATE

03-09-23C

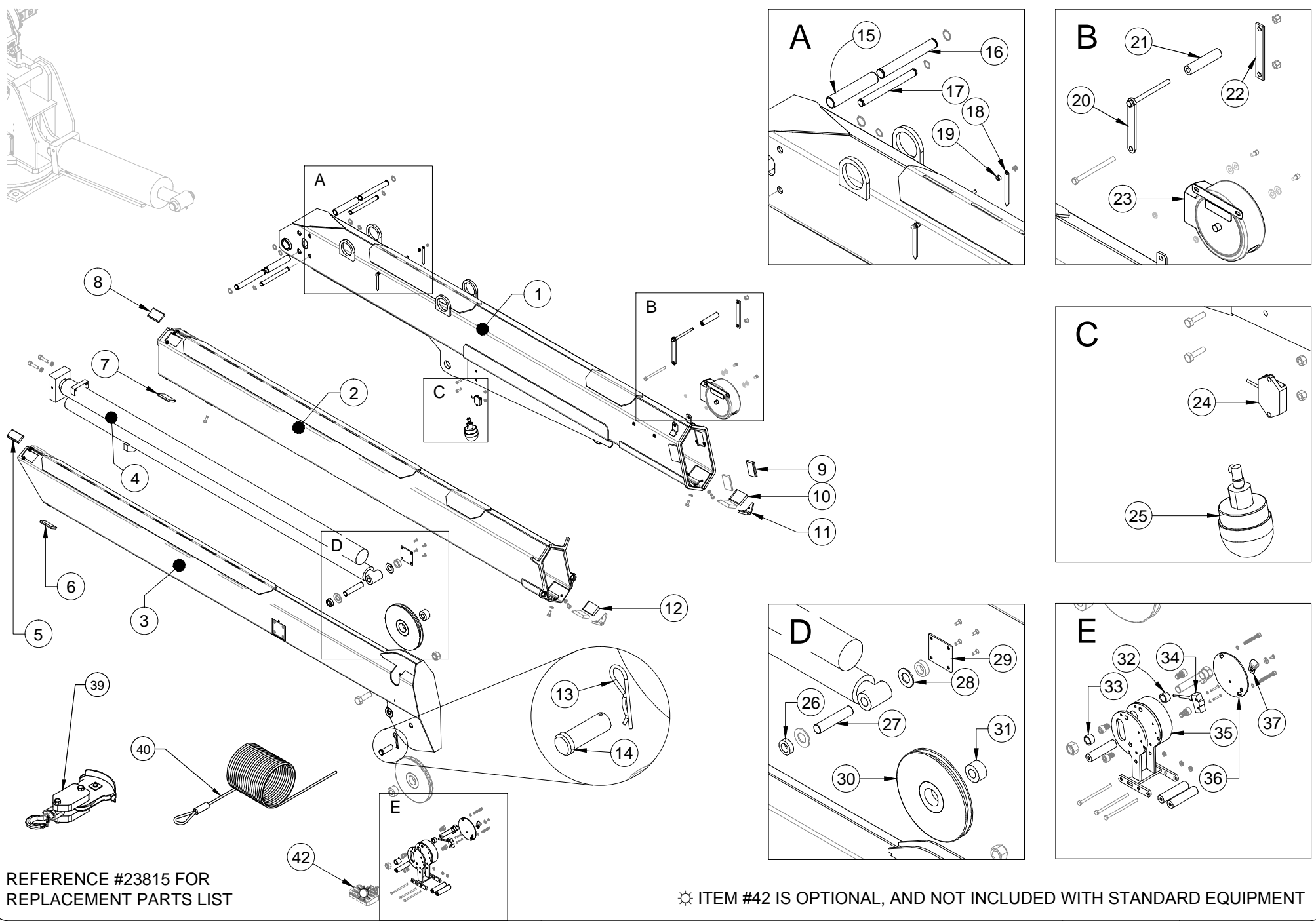
SUPERSEDES

06-24-22B

SECTION

C400

23813



REFERENCE #23815 FOR  
REPLACEMENT PARTS LIST

☼ ITEM #42 IS OPTIONAL, AND NOT INCLUDED WITH STANDARD EQUIPMENT



VENCO VENTURO INDUSTRIES LLC  
CINCINNATI, OHIO

TITLE	RPLCMNT PARTS DRAWING - 27260 BOOM
HT66KX-25' VLC SERIES	

DATE	02-09-21C	SECTION	C400
SUPERSEDES	01-05-21B		23814

# REPLACEMENT PARTS LIST - HT66KX-25' VLC SERIES; 27260 BOOM

ITEM	PART NO.	QTY	DESCRIPTION
1	27262	1	WELDED ASS'Y; PRIMARY BOOM
2	27264	1	WELDED ASS'Y; SECONDARY BOOM
3	27266	1	WELDED ASS'Y; TERTIARY BOOM
4	21751	1	EXTENSION CYLINDER
5	23217-11	2	BOOM PAD; UHMW, 'A', 3.19 x 1.88 x 0.50
6	23217-1	2	BOOM PAD; UHMW, 'A', 3.19 x 1.88 x 0.44
7	23217-2	2	BOOM PAD; UHMW, 'A', 3.19 x 2.13 x 0.44
8	23217-13	2	BOOM PAD; UHMW, 'A', 3.19 x 2.13 x 0.38
9	23217-2	2	BOOM PAD; UHMW, 'A', 3.19 x 2.13 x 0.44
10	23217-4	2	BOOM PAD; UHMW, 'B', 3.19 x 2.50 x 0.63
11	23183	2	V-BLOCK, SLIDER
12	23217-3	2	BOOM PAD; UHMW, 'B', 3.19 x 2.13 x 0.63
13	21-08	1	PIN; HAIRPIN COTTER
14	27272	1	CLEVIS PIN
15	27283	2	THRUST ROLLER; EXTENSION CYLINDER
16	27282	2	THRUST PIN; REAR, EXTENSION CYLINDER
17	27293	2	THRUST PIN; FRONT, EXTENSION CYLINDER
18	13459-2	2	ARROW
19	22490	2	SPACER; BOOM ARROW
20	21935	1	WELDED ASS'Y; WIRE ROPE GUIDE
21	21560	1	ROLLER; UHMW, WIRE ROPE GUIDE

ITEM	PART NO.	QTY	DESCRIPTION
22	21936	1	FLAT, MOUNT; WIRE ROPE GUIDE
23	28190	1	COMPLETE CORD REEL
* 24	23720-INC	1	UNIVERSAL INCLINOMETER
25	23438	1	WARNING LIGHT; TRI-COLOR, LED
26	21428	2	BUSHING; EXTENSION CYLINDER
27	21405	1	PIN; PIVOT, EXTENSION CYLINDER
28	!FWSH-100SAE	2	FLAT WASHER; 1" SAE
29	23116	2	PIN BLOCK REINFORCING
30	27241	2	CABLE SHEAVE
31	27256	2	SPACER; SHEAVE
32	27466-1	1	SPACER; COMPACT A2B, 0.47" LONG
33	27466-2	1	SPACER; COMPACT A2B, 0.81" LONG
34	19376	1	LIMIT SWITCH; MODIFIED
35	27486	1	WLD MNT; COMPACT A2B FRAME, LEFT-HAND
36	27473	1	PLATE; COMPACT A2B COVER
37	19269	1	CLAMP; 1/4" CABLE
38	27475	3	ROLLER; COMPACT A2B, WIRE ROPE GUIDE
39	27254	1	LOAD BLOCK ASSEMBLY
40	27587-7/16-100	1	WIRE ROPE; 7/16 * 100 FT
41	-	-	-
☼42	27483	1	ASS'Y; WORK LIGHT, LED

\* THESE ITEMS ARE INCLUDED IN 23720 KIT. PLEASE CALL TECHNICAL SUPPORT AT 1-800-226-2238 FOR ASSISTANCE.

REFERENCE #23814 FOR REPLACEMENT PARTS DRAWING

☼ OPTIONAL; NOT INCLUDED WITH STANDARD EQUIPMENT



VENCO VENTURO INDUSTRIES LLC  
CINCINNATI, OHIO

TITLE

REPLACEMENT PARTS LIST - 27260 BOOM

HT66KX-25' VLC SERIES

DATE

02-09-21C

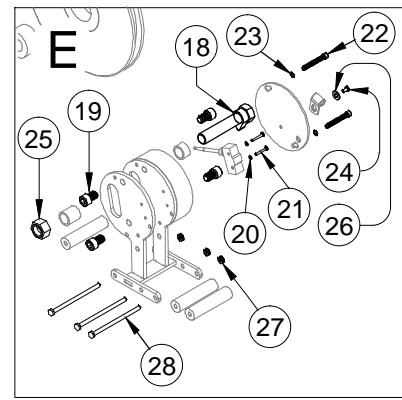
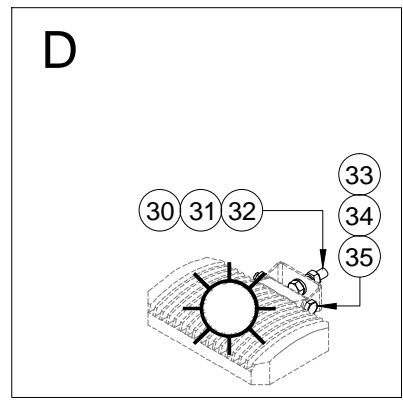
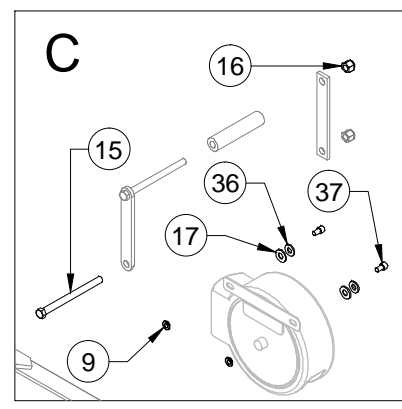
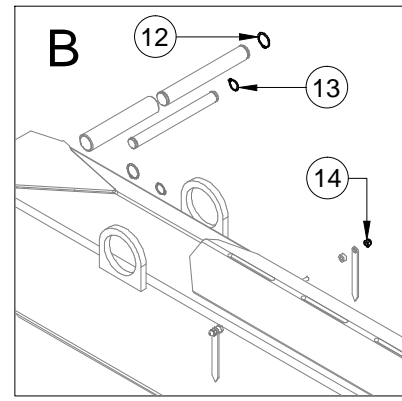
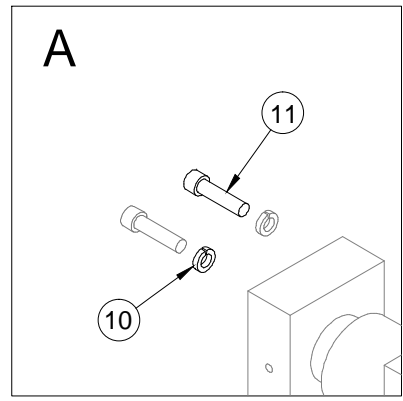
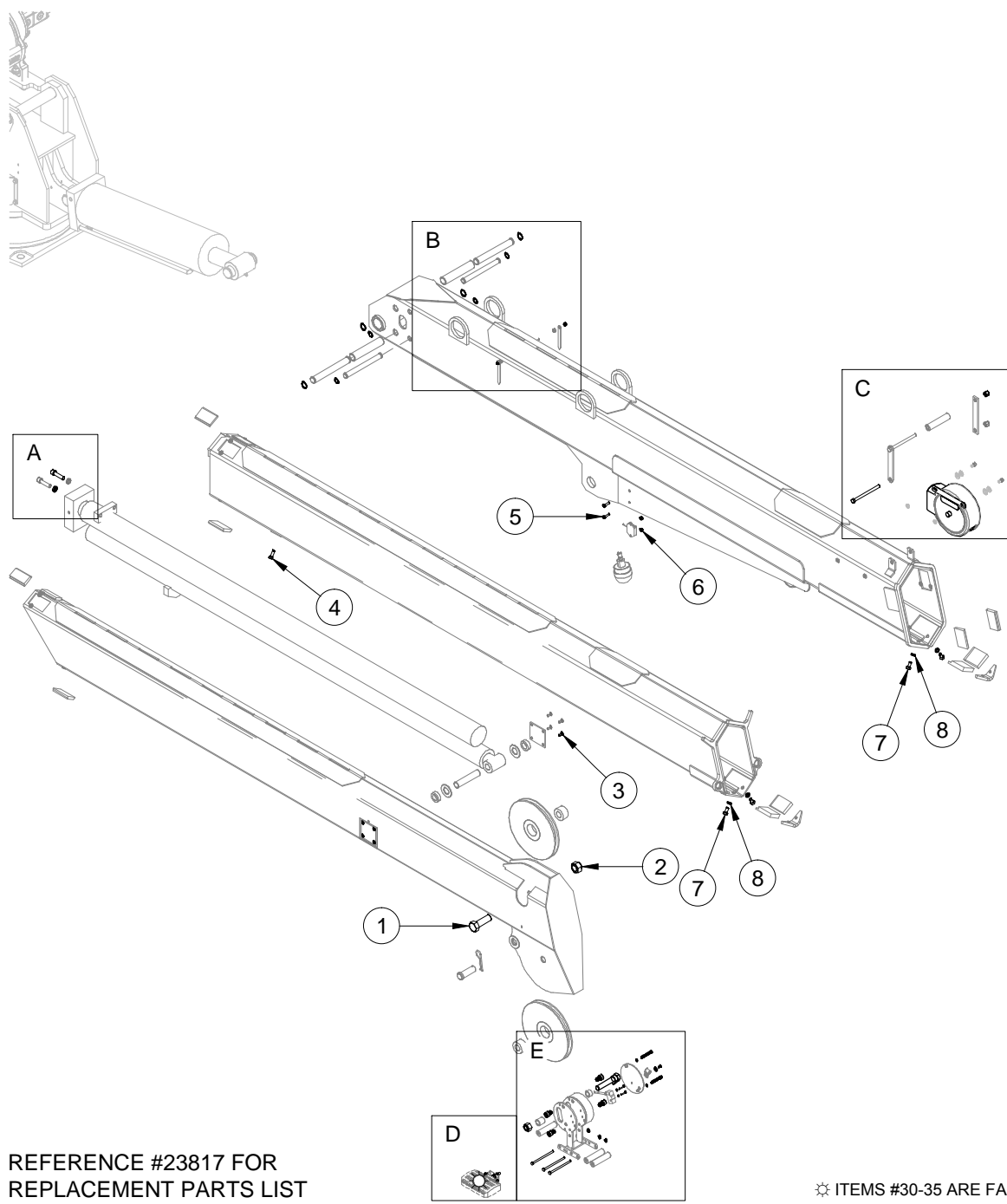
SUPERSEDES

01-05-21B

SECTION

C400

23815



REFERENCE #23817 FOR  
REPLACEMENT PARTS LIST

⚙️ ITEMS #30-35 ARE FASTENERS FOR OPTIONAL COMPONENTS - NOT INCLUDED WITH STANDARD EQUIPMENT



VENCO VENTURO INDUSTRIES LLC  
CINCINNATI, OHIO

TITLE	RPLCMNT FASTENERS DRWNG - 27260 BOOM
HT66KX-25' VLC SERIES	

DATE	02-09-21A	SECTION	C400
SUPERSEDES	02-06-19		23816

ITEM #	PART #	QTY	DESCRIPTION	WHERE-USED
1	!HHCS10008300	1	HHCS; 1-8 X 3", GR. 5, ZINC -PLTD	TOP SHEAVE
2	!LNUT-10008	1	HEX NUT; 1-8, GR. 5, ZINC-PLTD	TOP SHEAVE
3	!CACS02520050S	8	CACS; 1/4-20 X 1/2", S/S	PIN BLCK REINFORCING
4	!HHCS02520125S	2	HHCS; 1/4-20 X 1-1/4", S/S	EXTENSION CYLINDER
5	!HHCS02520100S	2	HHCS; 1/4-20 X 1", S/S	INCLINOMETER
6	!LNUT-02520NS	2	LOCK NUT; 1/4-20, NYLON, S/S	INCLINOMETER
7	!HHCS03816075S	4	HHCS; 3/8-16 X 3/4", S/S	V-BLOCKS
8	!LWSH-038	4	LOCK WASHER; 3/8", GR. 5, ZINC-PL	V-BLOCKS
9	28198	2	INSULATING SLEEVE WASHER - 5/16"	CORD REEL ASS'Y
10	!LWSH-050-HC	2	LOCK WASHER; 1/2", HI-COLLAR	EXTENSION CYLINDER
11	!SHCS05013200	2	SHCS; 1/2-13 X 2"	EXTENSION CYLINDER
12	!SRNG-100	4	SNAP RING; 1"	EXT. CYL. REAR PINS
13	!SRNG-075	4	SNAP RING; 3/4"	EXT. CYL. FRONT PINS
14	!ANUT-02520S	2	ACORN NUT; 1/4-20, S/S	BOOM ARROWS
15	!HHCS04414550	1	HHCS; 7/16-14 X 5-1/2", GR. 5, ZINC	WIRE ROPE GUIDE
16	!LNUT-04414	2	LOCK NUT; 7/16-14, GR. 5, ZINC	WIRE ROPE GUIDE
17	01016	2	FIBER WASHER	CORD REEL ASS'Y
18	28373	1	ASSY, CAM & HHCS CA2B CUT-OUT	COMPACT A2B ASS'Y
19	27467	4	SHCS; 1/2-13 X 3/4", BLACK NYLON	COMPACT A2B ASS'Y
20	!LWSH-#06	2	LOCK WASHER; #06, ZINC	COMPACT A2B SWITCH

ITEM #	PART #	QTY	DESCRIPTION	WHERE-USED
21	!PHCS#0632100	2	PHCS; #06-32 X 1", GR. 5, ZINC	COMAPCT A2B SWITCH
22	!SHCS02520200SS	2	SHCS; 1/4-20 X 2", S/S	COMPACT A2B COVER
23	23379	2	WASHER; 3/8" ID, 1/4" OD, NYLON	COMPACT A2B COVER
24	!SHPMS#1032038S	1	SLOT-HD PMS; #10-32 X 3/8", S/S	COMPACT A2B CLAMP
25	!LNUT-10008	1	LOCK NUT; 1-8, NYLON	COMPACT A2B ASS'Y
26	!FWSH-025S	1	FLAT WASHER; 1/4", S/S	COMPACT A2B CLAMP
27	!JNUT-02520NS	3	JAM NUT; 1/4-20, NYLON, S/S	COMPACT A2B ROLLERS
28	!HHCS02520450	3	HHCS; 1/4-20 X 4-1/2"	COMPACT A2B ROLLERS
29	-	-	-	-
☆ 30	!HHCS03118125S	1	HHCS; 5/16-18 X 1-1/4", S/S	WORK LIGHT
☆ 31	!HNUT-03118S	2	HEX NUT; 5/16-18, S/S	WORK LIGHT
☆ 32	!FWSH-031S	1	FLAT WASHER; 5/16", S/S	WORK LIGHT
☆ 33	!HHCS02520250S	1	HHCS; 1/4-20 X 2-1/2", S/S	WORK LIGHT
☆ 34	!LWSH-025S	1	LOCK WASHER; 1/4", S/S	WORK LIGHT
☆ 35	!HNUT-02520S	1	HEX NUT; 1/4-20, S/S	WORK LIGHT
36	!FWSH-031	2	FLAT WASHER; 5/16"	CORD REEL ASS'Y
37	!SHCS03118063S	2	SHCS; 5/16-18 X 5/8" LG, S/S	CORD REEL ASS'Y
38	-	-	-	-
39	-	-	-	-
40	-	-	-	-

☆ ITEMS #30-35 ARE FOR OPTIONAL COMPONENTS - NOT INCLUDED WITH STANDARD EQUIPMENT

REFERENCE #23816 FOR REPLACEMENT FASTENERS DRAWING

HHCS = HEX HEAD CAP SCREW PMS = PAN MACHINE SCREW S/S = STAINLESS STEEL



VENCO VENTURO INDUSTRIES LLC  
CINCINNATI, OHIO

TITLE

PLCMNT FASTENERS LIST - 27260 BOOM

HT66KX-25' VLC SERIES

DATE

02-09-21A

SUPERSEDES

02-06-19

SECTION

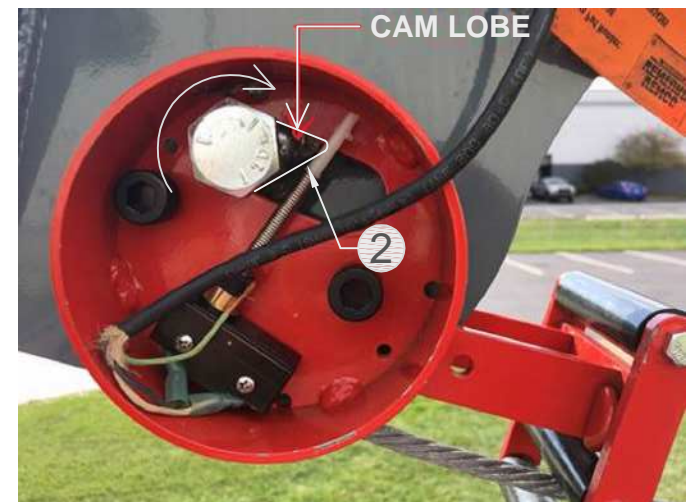
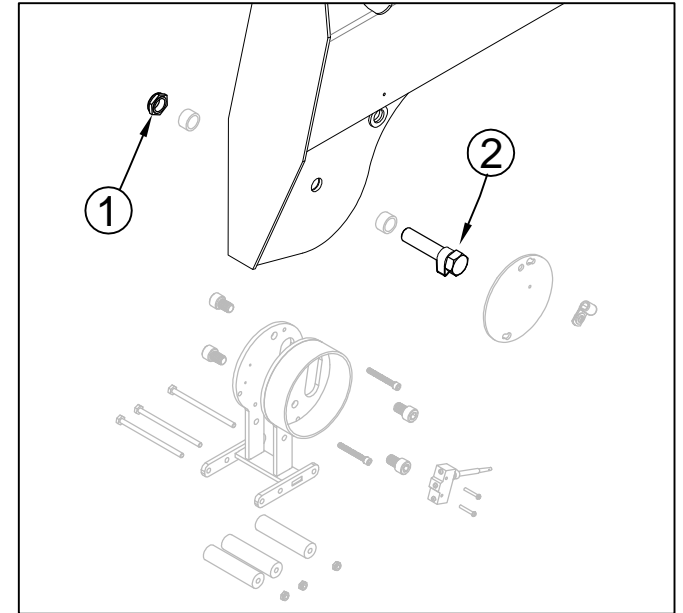
C400

23817

# Compact A2B with Stowage Cut-out, Install/Adjustment Instructions (Kit: 28375)

The purpose of the Stowage Cut-out system is to prevent a situation whereby the wire rope is over-tensioned when the load block / wire rope is attached to the stowage hook on the bottom of the primary boom assembly. **However, the OPERATOR is ultimately responsible for ensuring that the wire rope is not over-tensioned when stowing the wire rope and boom assembly into the boom rest.**

1. Initially, apply a light torque to the nyloc full nut Item #1 (P/N !LNUT-07510), such that the axle bolt & cam welded assembly can be rotated / adjusted in the steps below.
2. Position the cam **lobe** Item #2 (P/N 28362) so that it is pointing towards the housing / mechanism
3. Hang the load block on the open stowage hook under the primary boom.
4. Thread the wire rope through the load block in a two-line configuration; the wire rope end / eyelet is pinned in the standard position on the tertiary boom tip
5. Actuate the Winch Up function until the load block and wire rope are **taut** enough to prevent the load block from bouncing during transit, **but do not tighten excessively so as to prevent damage to the wire rope.**
6. Rotate the axle bolt & cam welded assembly towards the housing (clockwise in standard configuration) until the cam lobe makes contact with and trips the wobble micro switch and actuates the A2B function.
7. Once adjusted, torque the nyloc full nut (Item #1) to 100 ft\*lbs to prevent further rotational movement of the axle bolt & cam welded assembly.
8. Test the A2B trip-point by slackening and tightening the wire rope / load block assembly by actuating Winch Up/Down. **NOTE: The point at which the A2B trips WILL vary to some degree, depending upon the winch up speed. It is recommended to actuate the winch up function slowly, which will yield a consistent and repeatable result, in terms of wire rope tension when stowed.**



Contact Ventura Tech Support for assistance. 1-800-226-2238 ext. 124



VENCO VENTURO INDUSTRIES LLC  
CINCINNATI, OHIO

TITLE

A2B Stowage Cut-out

ET/HT Cranes w/ Comp. A2B

DATE

10-04-21B

SUPERSEDES

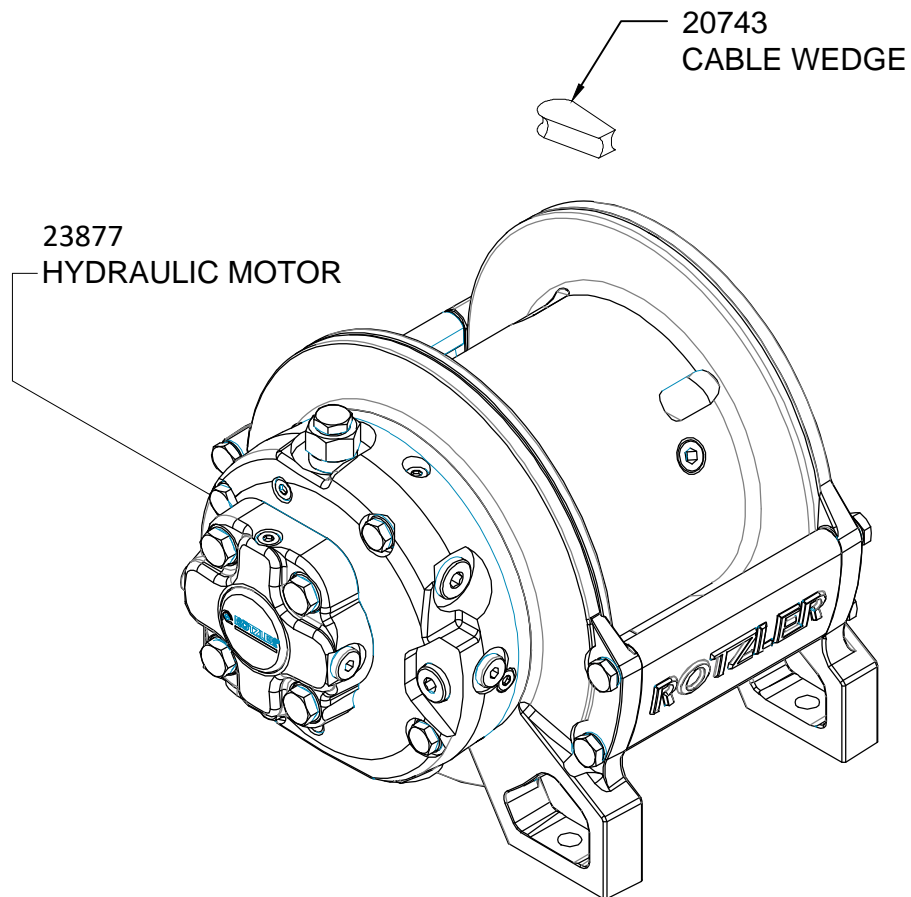
08-03-21A

SECTION

C400

28239

# REPLACEMENT PARTS DRAWING; 27274 WINCH



WINCH SEALS PACKAGE: 23848



VENCO VENTURO INDUSTRIES LLC  
CINCINNATI, OHIO

TITLE  
REPLACEMENT PARTS DRAWING

HT60/66KX SERIES CRANES

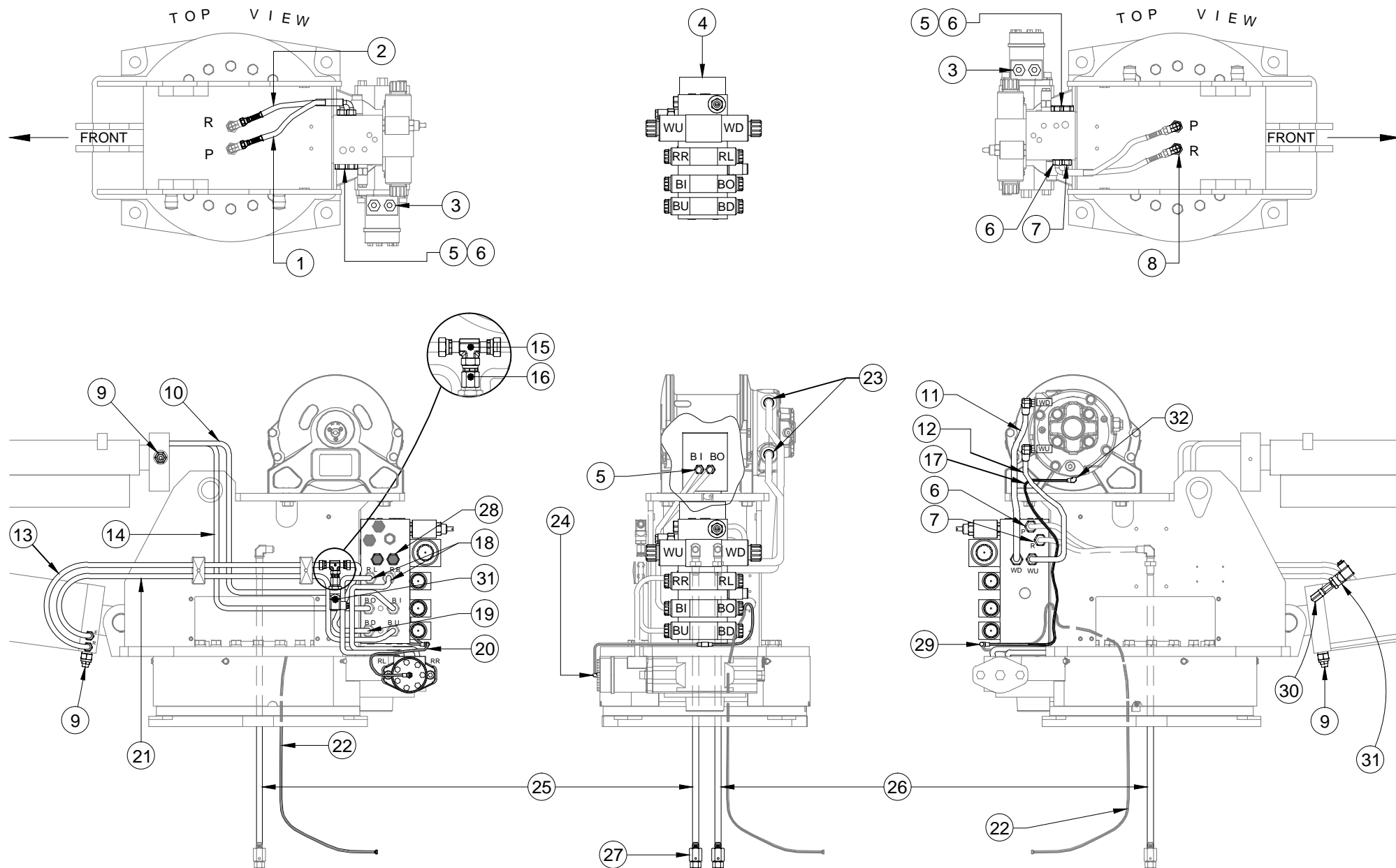
DATE  
11-10-22-C

SUPERSEDES  
04-05-21B

SECTION  
C400

27332

# REPLACEMENT PARTS DRAWING - HYDRAULIC COMPONENTS



REFERENCE #23819 FOR REPLACEMENT PARTS LIST

HOSE ROUTINGS ARE FOR REFERENCE ONLY



VENCO VENTURO INDUSTRIES LLC  
CINCINNATI, OHIO

TITLE  
RPLCMNT PARTS DWG - HYD. COMPONENTS  
HT60/66KX VLC SERIES

DATE  
03-15-23B  
SUPERSEDES  
12-01-22A

SECTION  
C400  
23846

# REPLACEMENT PARTS LIST - HYD. COMPONENTS

ITEM	PART NO.	HT60	HT66	DESCRIPTION	INSTALLATION
1	27584	1	1	HOSE ASS'Y; PRESSURE	H2701LN-0808 (BLKHD) - FF6400-0810 (MANIFOLD)
2	27618	1	1	HOSE ASS'Y; RETURN	H2701LN-0808 (BLKHD) - FF6400-0812 (MANIFOLD)
3	FF6400-0610	2	2	FITTING; STRAIGHT ADAPTER, 6OFS-10MO	ROTATION MOTOR PORTS
4	22736H-1	-	1	VALVE MANIFOLD; HI-FLOW, 3000 PSI	-
4	22736H-2	1	-	VALVE MANIFOLD; HI-FLOW, 2600 PSI	-
5	FF6400-0606	10	10	FITTING; STRAIGHT ADAPTER, 6OFS-6MO	RL/RR/BI/BO/BU/BD MANIFOLD PORTS, CYL. PORTS
6	FF6400-0810	3	3	FITTING; STRAIGHT ADAPTER, 8OFS-10MO	MANIFOLD PORTS: 'P' (RIGHT), WU/WD (LEFT)
7	FF6400-0812	1	1	FITTING; STRAIGHT ADAPTER, 8OFS-12MO	MANIFOLD RETURN PORT (RIGHT)
8	H2701LN-0808	2	2	FITTING; BULKHEAD, 90° ELBOW, 8MJ-8MJ	MECHANISM; MIDPLATE
9	20893	2	2	COUNTER-BALANCE VALVE	ELEVATION & EXTENSION CYLINDERS
10	27593	1	1	HOSE ASS'Y; BOOM IN	FF6400-0606 (MANIFOLD) - FF6400-0606 (EXT. CYL.)
11	27025 <sup>1</sup>	1	1	HOSE ASS'Y; WINCH DOWN	FF6400-0810 (MANIFOLD) - FF3801-8-12 (WINCH)
12	27024 <sup>2</sup>	1	1	HOSE ASS'Y; WINCH UP	FF6400-0810 (MANIFOLD) - FF3801-8-12 (WINCH)
13	28052	1	1	HOSE ASS'Y; BOOM DOWN, CYL-SIDE	23731 - FF6400-0606 (ELEV. CYL. 'R' PORT)
14	27592	1	1	HOSE ASS'Y; BOOM OUT	FF6400-0606 (MANIFOLD) - FF6400-0606 (EXT. CYL.)
15	23731	1	1	FITTING; TEE, 6MORFS-6FORFS-6MORFS	28052, 28053, & 23732
16	23732	1	1	FITTING; REDUCER, 6FORFS-4FORB	23731 - PRESSURE TRANSDUCER
17	22953	1	1	HOSE ASS'Y; CASE DRAIN, 30" LONG	H6801-0404 (WINCH) - H2603-040404 (TEE)
18	27598	2	2	HOSE ASS'Y; ROTATION LEFT/RIGHT	FF6400-0606 (MANIFOLD) - FF6400-0610 (ROT. MTR.)
19	28053	1	1	HOSE ASS'Y; BOOM DOWN, MANIFOLD-SIDE	23731 - FF6400-0606 (MANIFOLD)
20	22952	1	1	HOSE ASS'Y; CASE DRAIN, 13" LONG	H6801-0404 (ROTATION MTR) - H2603-040404 (TEE)
21	27663	1	1	HOSE ASS'Y; BOOM UP	FF6400-0606 (X2); MANIFOLD - ELEV. CYL. 'E' PORT
22	22903	1	1	HOSE ASS'Y; CASE DRAIN, 96" LONG	H2603-040404 - COMPARTMENT
23	FF3801-8-12	2	2	FITTING; 90° ELBOW ADAPTER, 8OFS-12MBP	WINCH PORTS - 28271, 28272
24	H6801-0404	1	1	FITTING; 90° ELBOW ADAPTER, 4MJ-4MO	ROTATION MOTOR CASE DRAIN PORT
25	27665	1	1	HOSE ASS'Y; PRESSURE SUPPLY	22764 (SWIVEL) - H2701LN-0808 (BULKHEAD)
26	27664	1	1	HOSE ASS'Y; RETURN SUPPLY	22764 (SWIVEL) - H2701LN-0808 (BULKHEAD)
27	22764	2	2	HYDRAULIC SWIVELS; 8MJ-8FJ	COMPARTMENT - 22765 (PRESS), 22764 (RETURN)
28	H6408-10	2	2	FITTING; PLUG, 10MO	MANIFOLD (WU/WD PORTS)
29	H2603-040404	1	1	FITTING; T-SHAPE, 4MJ-4MJ-4MJ	22952, 22953, & 22903 (CASE DRAIN HOSES)
30	H6815-0604	1	1	FITTING; 90° ELBOW, 6MORB-4FORB	TRANSDUCER - ELEV. CYLINDER PORT (RIGHT SIDE)
* 32	23720-PTD	2	2	PRESSURE TRANSDUCER	-
33	3802-0404 (FF3802-4-4)	1	1	FITTING; ADAPTER, 45° ELBOW, 04MJ-04MBP	WINCH CASE DRAIN PORT

\* THESE ITEMS ARE INCLUDED IN 23720 KIT. PLEASE CALL TECHNICAL SUPPORT AT 1-800-226-2238 FOR ASSISTANCE.

<sup>1</sup> WINCH DOWN HOSE #27025 IS APPLICABLE TO CRANES WITH SERIAL #10A000024 & HIGHER. *ITEM #11 WAS 28272*

<sup>2</sup> WINCH UP HOSE #27024 IS APPLICABLE TO CRANES WITH SERIAL #10A000024 & HIGHER. *ITEM #12 WAS 28271*

REFERENCE #23818 FOR REPLACEMENT PARTS DRAWING



VENCO VENTURO INDUSTRIES LLC  
CINCINNATI, OHIO

TITLE  
**RPLCMNT PARTS - HYD. CMP**  
  
HT60/66KX VLC SERIES

DATE  
**03-15-23C**  
  
SUPERSEDES  
**11-23-22B**

SECTION  
**C400**  
  
**23847**

# 22736 SERIES VALVE MANIFOLD REPLACEMENT PARTS

22963  
CHECK VALVE  
(NOT SHOWN -  
LOCATED ON BACK SIDE)

22595  
MAIN RELIEF VALVE

22967 (HT40/50, 22736H)  
22595 (HT66, 22736H-1)  
22595-2600 (HT60, 22736H-2)  
WINCH RELIEF VALVE

22312-2.25  
PRIORITY FLOW VALVE  
(BOOM EXTENSION)

22312-4.00  
PRIORITY FLOW VALVE  
(BOOM ELEVATION)

PRIORITY FLOW VALVE		
VALVE P/N	MANIFOLD	CRANE
22312-6.00	22736H	HT40/50KX
22312-7.50	22736H-1	HT66KX
22312-7.50	22736H-2	HT60KX
NOT SHOWN - LOCATED ON RIGHT SIDE		

PROPORTIONAL VALVE		
VALVE P/N & DESCRIPTION	MANIFOLD	CRANE MODEL
23046 HYDRAFORCE (ROUND COIL)	22736H	HT40KX
		HT50KX
	22736H-1	HT/66KX
	22736H-2	HT60KX

22873  
VALVE SECTION ASSY

22523  
VALVE SECTION ASSY



VENCO VENTURO INDUSTRIES LLC  
CINCINNATI, OHIO

TITLE  
22736 REPLACEMENT PARTS

HT40/50/60/66KX PROPORTIONAL

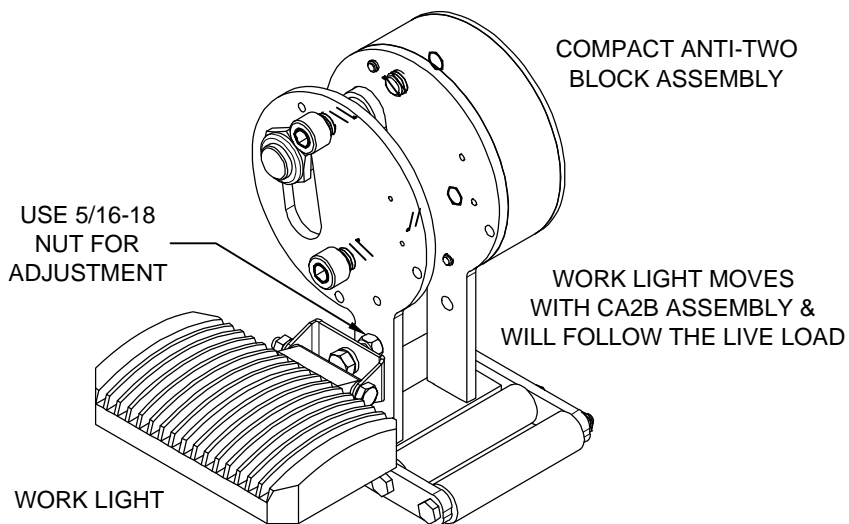
DATE  
11-10-22G

SUPERSEDES  
11-13-17F

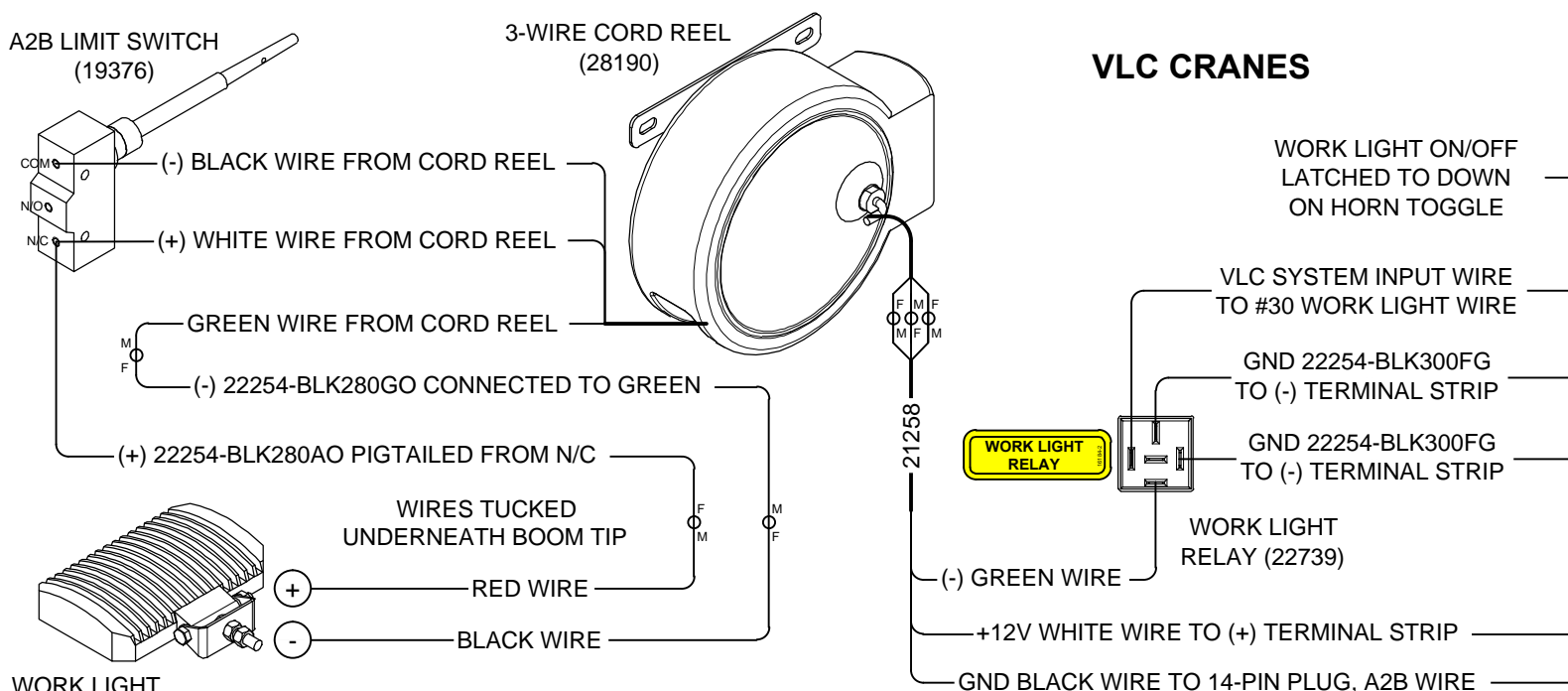
SECTION  
C400

22940

# WORK LIGHT INSTALLATION: 28240 (3-WIRE CORD REEL ON VLC CRANES)



BILL OF MATERIALS		N/D	28240
#	DESCRIPTION	QTY	PART NUMBER
1	IDWG; WORK LIGHT INSTALLATION, VLC CRANES	1	28188
2	LED WORK LIGHT	1	27483
3	TERMINAL; 16G, FEMALE, QUICK-CONNECT	5	!TERM16G250QCFI
4	TERMINAL; 16G, MALE, QUICK-CONNECT	4	!TERM16G250QCM
5	WIRE ASS'Y; 16G, BLACK, 28", #6 RING - STRIPPED END	1	22254-BLK280AO
6	WIRE ASS'Y; 16G, BLACK, 28", QCF - STRIPPED END	1	22254-BLK280GO
7	RELAY; 12VDC	1	22739
8	DECAL; WORK LIGHT RELAY	1	16184-2
9	WIRE ASS'Y; 16G, BLACK, 30", MALE PIN - QCF	2	22254-BLK300FG



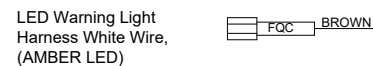
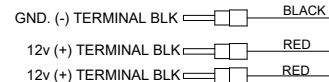
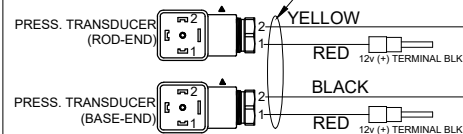
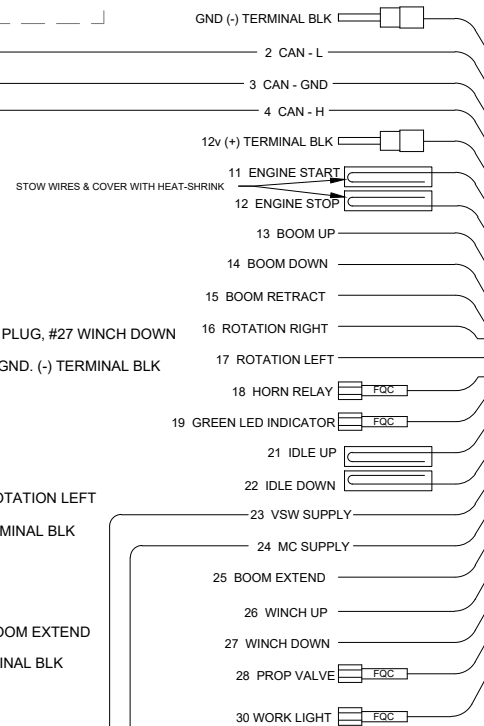
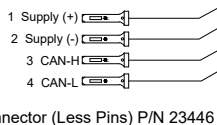
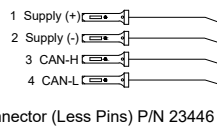
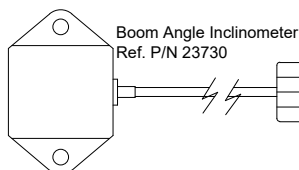
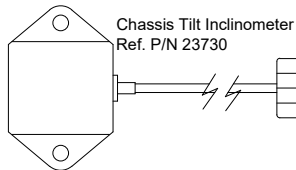
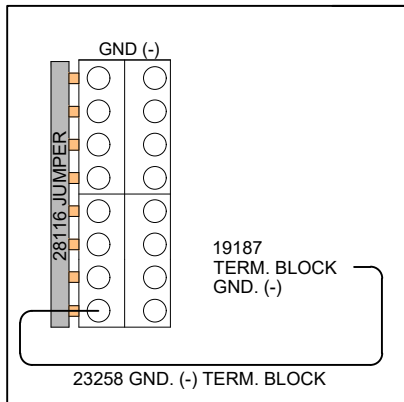
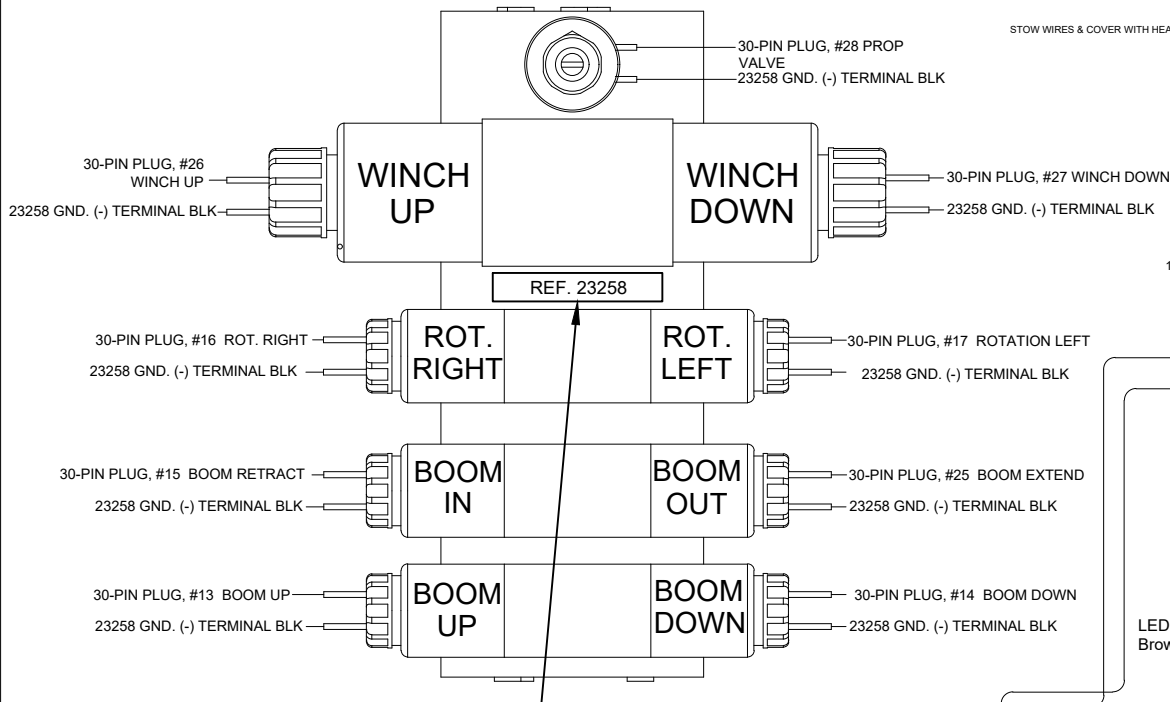
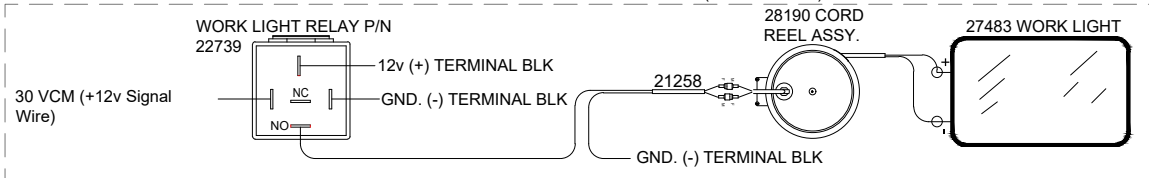
VENCO VENTURO INDUSTRIES LLC  
CINCINNATI, OHIO

TITLE  
WORK LIGHT INSTALLATION, 3-WIRE CORD REEL  
VLC CRANES

DATE  
03-03-23A  
SUPERSEDES  
02-05-21

SECTION  
C400  
28188

OPTIONAL WORK LIGHT CIRCUIT (KIT P/N 27484)



23821 SHOWS RIGHT SIDE OF WIRING DIAGRAM



VENCO VENTURO INDUSTRIES LLC  
CINCINNATI, OHIO

TITLE  
WIRING DIAGRAM, PG. 1

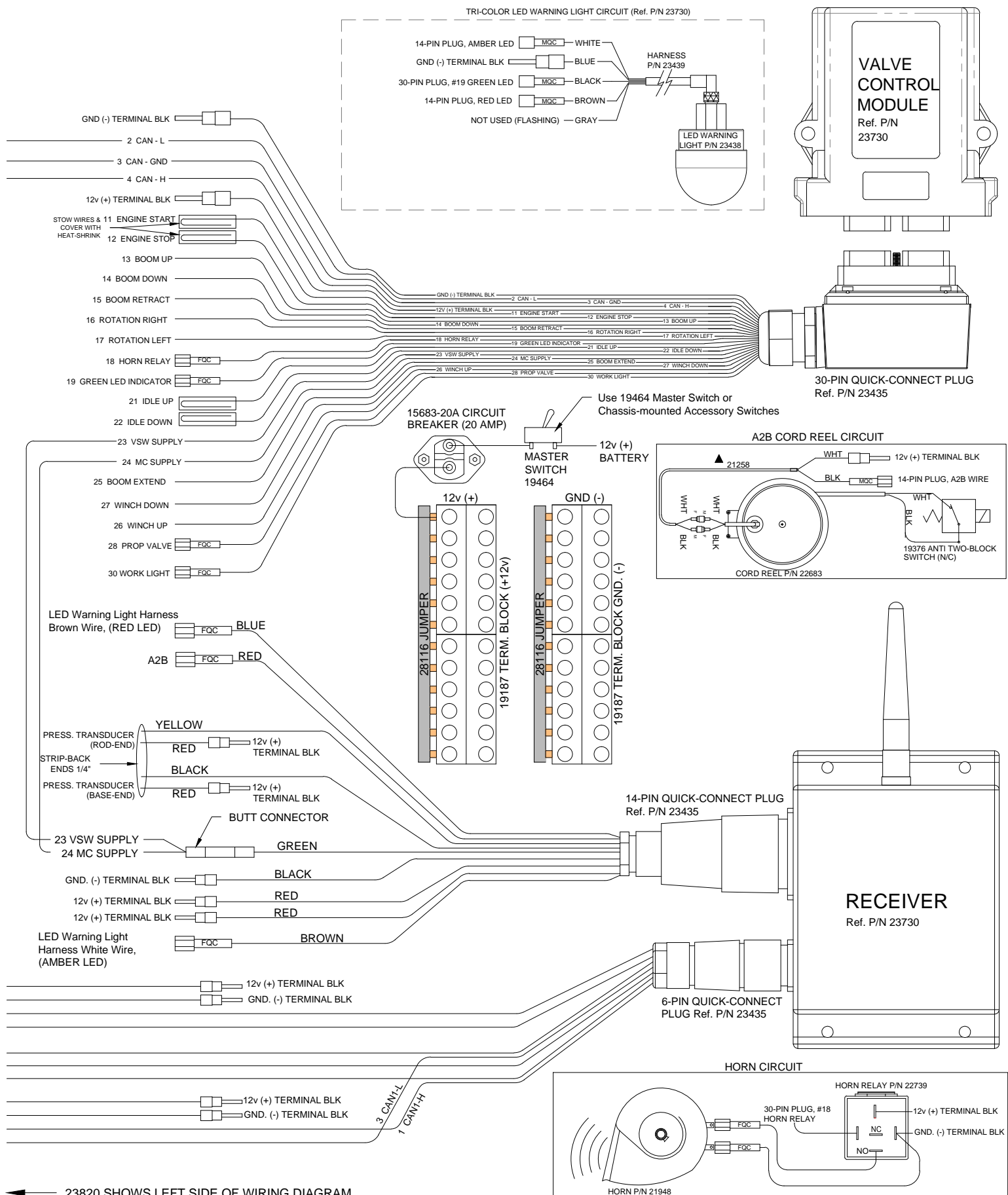
HT60/66KX W/ ROTZLER TI-2

DATE  
04-17-23B

SUPERSEDES  
11-21-22A

SECTION  
C400

23836

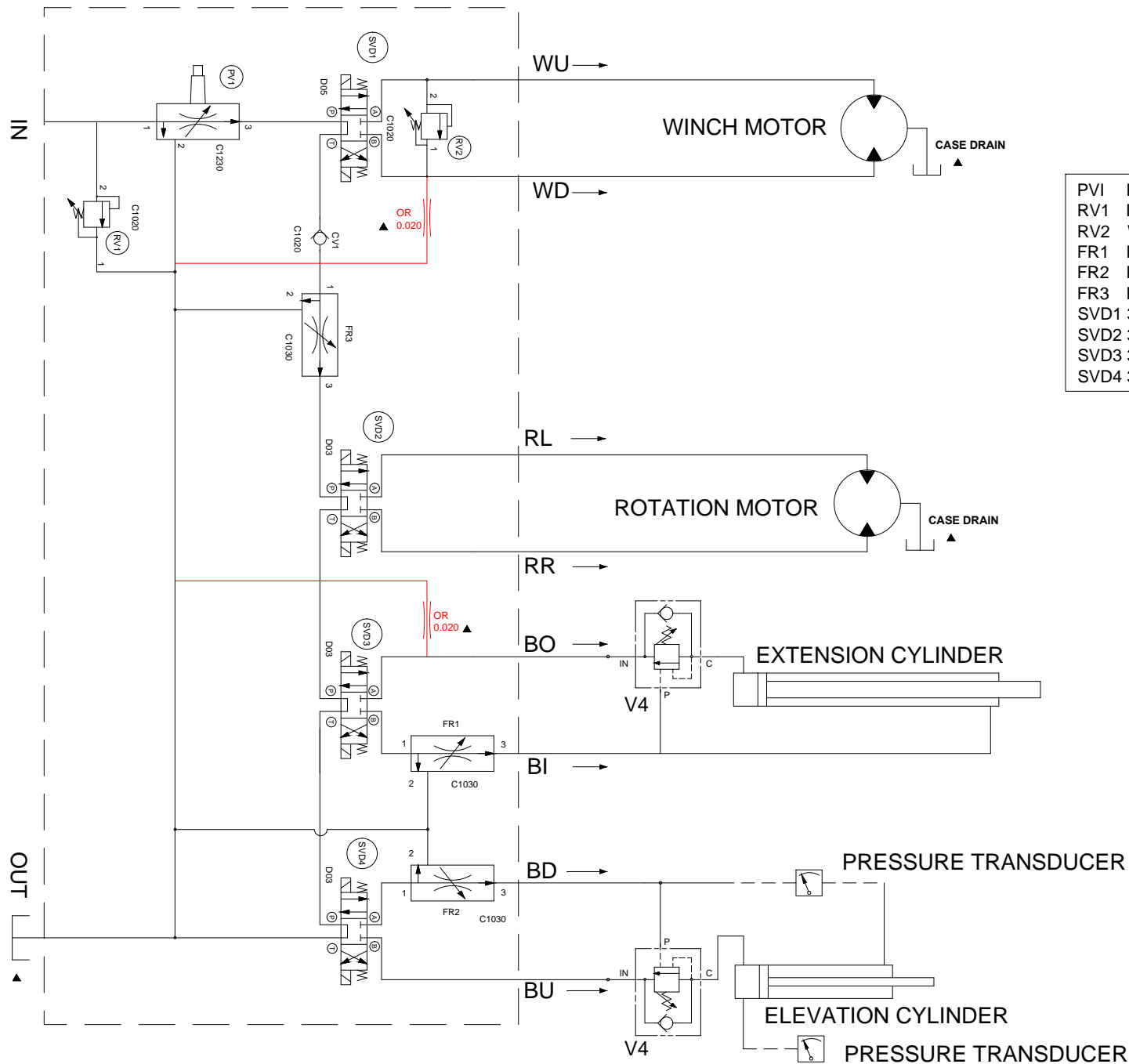


VENCO VENTURO INDUSTRIES LLC  
 CINCINNATI, OHIO

TITLE  
**WIRING DIAGRAM, PG. 2**  
 HT60/66KX VLC SERIES

DATE  
**08-29-23F**  
 SUPERSEDES  
**11-21-22E**

SECTION  
**C400**  
**23821**



VENCO VENTURO INDUSTRIES LLC  
CINCINNATI, OHIO

TITLE  
HYDRAULIC SYSTEM DIAGRAM

HT60/66KX VLC SERIES

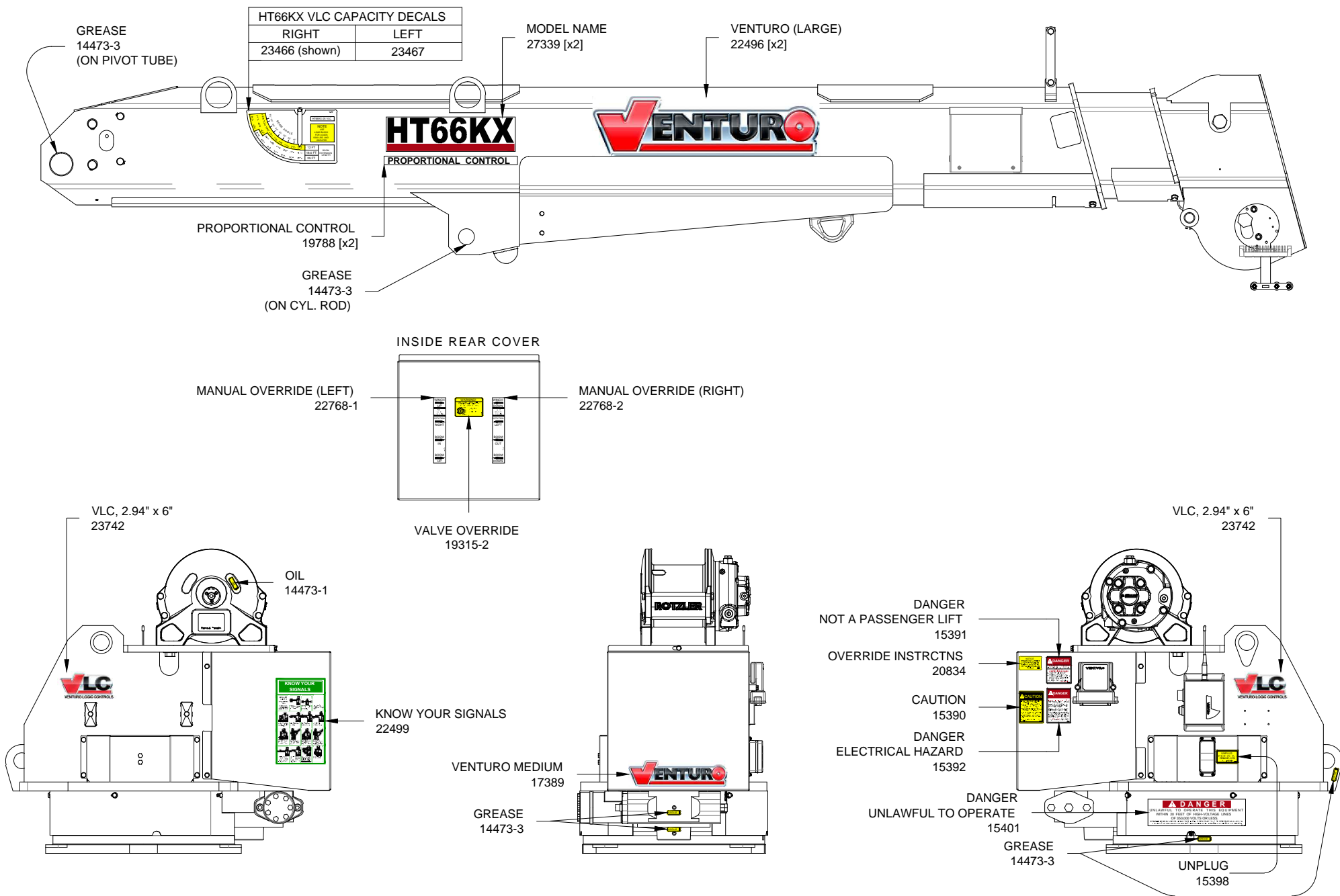
DATE  
12-04-23D

SUPERSEDES  
11-22-22C

SECTION  
C400

23822





VENCO VENTURO INDUSTRIES LLC  
CINCINNATI, OHIO

TITLE

DECAL PLACEMENT

HT66KX-25' VLC W/ ROTZLER TI-2

DATE

02-13-23A

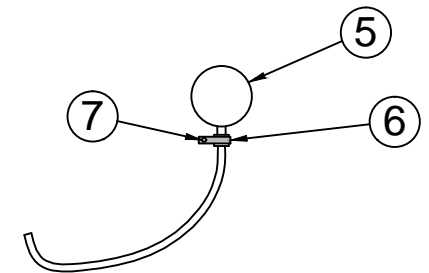
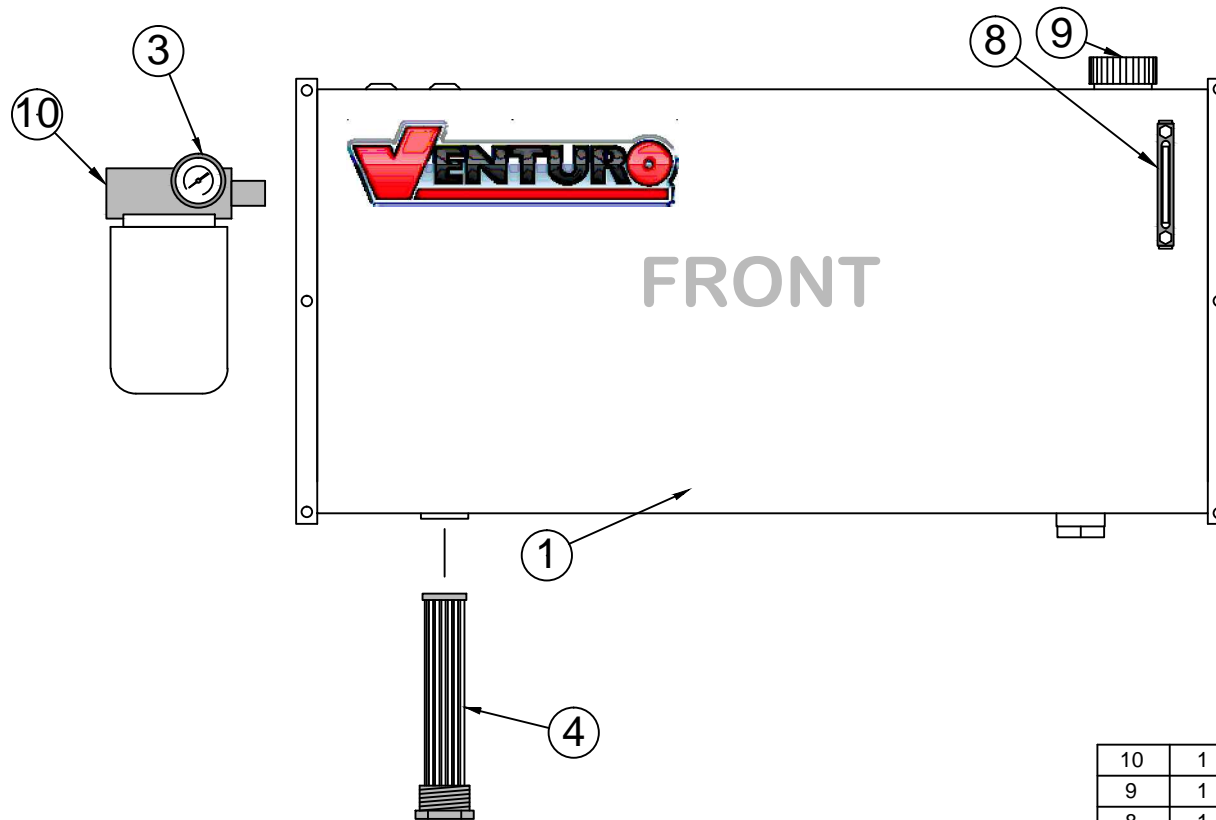
SUPERSEDES

03-23-21

SECTION

C400

23839



10	1	19298	FILTER ASSY, RETURN
9	1	22789	FILLER / BREATHER CAP ASSEMBLY
8	1	22787	SIGHT GLASS
7	1	!HWHS02520075-F	HEX WASHER HEAD 1/4-20 X 3/4 SELF TAPPING
6	1	19275	CLAMP
5	1	22730	PRESSURE GAUGE ASSEMBLY
4	1	22788	SUCTION SCREEN - 100 MESH
3	1	19297	PRESSURE GAUGE - RETURN
2	-	-	-
* 1	1	22785	HYDRAULIC RESERVOIR - 25 GAL (18" x 40" x 8")
		22998	HYDRAULIC RESERVOIR - 40 GAL (20" x 42" x 11")
ITEM	QTY	PART NUMBERS	DESCRIPTION



VENCO VENTURO INDUSTRIES LLC  
CINCINNATI, OHIO

TITLE

RESERVOIR KIT REPL PARTS

DATE

12-09-22D

SECTION

C400

HT CRANES; 25/40 GAL RESERVOIR

SUPSEDES

08-04-15C

23224

# 23837 FIELD SERVICE LABEL KIT; HT66KX W/ ROTZLER TI-2

23837 FIELD SERVICE LABEL KIT (FOR HT66KX GENERATION 'A' VLC W/ ROTZLER TI-2)			HT66KX W/ ROTZLER TI-2 SERIAL NUMBER RANGES: 10A000024 - 10A000025 10A000028 - CURRENT
QTY	PART #	DESCRIPTION	
2	22496	DECAL; VENTURO LOGO, LARGE	
1	17389	DECAL; VENTURO LOGO, MEDIUM	
2	27339	DECAL; MODEL NAME, HT66KX	
2	19788	DECAL; PROPORTIONAL CONTROL	
1	23466	DECAL; BOOM CAPACITY, RIGHT (HT66KX-25')	
1	23467	DECAL; BOOM CAPACITY, LEFT (HT66KX-25')	
1	14473-1	DECAL; OIL	
6	14473-3	DECAL; GREASE	
1	17813	DECAL; OVERLOAD SENSING SYSTEM	
1	22499	DECAL; KNOW YOUR SIGNALS	
1	20834	DECAL; MANUAL OVERRIDE, INSTRUCTIONS	
1	19315-2	DECAL; MANUAL OVERRIDE, SHUTOFF, PROPORTIONAL	
1	22768-1	DECAL; MANUAL OVERRIDE, HT PROPORTIONAL, LEFT	
1	22768-2	DECAL; MANUAL OVERRIDE, HT PROPORTIONAL, RIGHT	
2	23742	DECAL; VLC, 2.94" x 6.00"	
1	16184-1	DECAL: HORN RELAY	
1	16184-2	DECAL; WORK LIGHT RELAY	
1	23838	IDWG; FIELD SERVICE LABEL KIT, HT66KX VLC SERIES	
1	23839	IDWG; DECAL PLACEMENT, HT66KX VLC SERIES	
1	INST-23233	SAFETY MANUAL; VENTURO CRANES	
1	15397	KIT; ACCIDENT PREVENTION SIGNS	



VENCO VENTURO INDUSTRIES LLC  
CINCINNATI, OHIO

TITLE

FIELD SERVICE LABEL KIT

DATE

03-13-23B

SECTION

C400

HT66KX W/ ROTZLER TI-2

SUPERSEDES

02-13-23A

23838





# VENTURO CRANES LIMITED WARRANTY POLICY

Venturo products are built to last...we guarantee them.

As a purchaser of any new Venturo product covered by warranty, you will receive 1 year of the most complete coverage available...and, at no added cost to you.

## 1-Year Limited Warranty Policy

This limited policy warrants new products of Venturo to be free from defects in material and workmanship for a period of one (1) year from date of original installation. OEM products or accessories purchased by Venturo as part of or offered with our product will carry the OEM manufacturer's respective warranty. Our warranty covers:

- ***Repair or replacement of product***
- ***Labor to repair or replace product***
- ***Freight to return and/or replace product***

We shall not be liable for any contingent liabilities arising out of the improper function of any products. Warranty shall become void if the product is improperly installed, modified, damaged, abused or used for application other than intended use. There is no warranty of merchantability, fitness for a particular purpose, warranty arising from course of dealing or usage of trade, or any other implied or expressed warranty, except as made specifically herein. This warranty supersedes all previous warranties, written or implied.

## Warranty Claims

Venco Venturo Industries LLC will make a good faith effort for prompt correction or other adjustment with respect to any product, which proves to be defective after our inspection and within the warranty period. Before any repairs are attempted or before returning any product, your Venturo Distributor is required to obtain a warranty claim number. This number is necessary for any claim to be considered. To obtain a warranty claim number, Venturo requires the model and serial number. Only authorized Venturo Distributors can perform warranty. For the name and address of your local Venturo Distributor call the **Warranty Claim Department - 513-772-8448**.

**WARNING** - It is the responsibility of the installer to ensure the installation is completed according to the manufacturer's recommendations, ensure the ultimate user understands how to operate product in a safe manner, and understands the need for regular service and maintenance by an authorized Venturo Distributor. No modifications or alterations may be made to any Venturo product without the expressed written consent of Venco Venturo Industries LLC. Installation of any Venturo product must be done by an authorized Venturo Distributor, to the standards of the industry; including maintenance, service and affixing of all instruction, safety and warning decals. Users should be instructed as to the safe operation at time of delivery. Maintenance, service, operation and safety warning decals are available on request from Venco Venturo Industries LLC.

**VENCO VENTURO INDUSTRIES LLC**  
12110 BEST PLACE | CINCINNATI, OHIO 45241  
P: 800-226-2238 | F: 513-326-5427  
[www.venturo.com](http://www.venturo.com)