

PARTS & INSTALLATION MANUAL

ET6K

Included in this manual:

ET6K

- 2,000 lb Hydraulic Telescopic Service Crane
- 10 ft Manual Boom Extension

TABLE OF CONTENTS

ET6K (ECBAAB-**) OWNER'S MANUAL

SECTION 100	DESCRIPTION & SPECIFICATIONS
26001	INSTALLATION DIMENSIONS
27423	CAPACITY CHART
26011	MOUNTING DIMENSIONS, CRANE BASE MOUNTING PLATE
22686	18500-CD MANUAL STABILIZER
13509	13500 MANUAL STABILIZER
123961	23961 MANUAL STABILIZER
123960	23960 MANUAL STABILIZER
SECTION 150	SAFETY
850711	SAFETY & HAZARDS - GENERAL
850712	SAFETY & HAZARDS - CONTINUED
15394	VEHICLE & CRANE ELECTRIC HAZARD INFORMATION
21353	SAFETY DECALS
21354	DECALS FOR ET CRANES
26041	ADDITIONAL DECALS
26825	MODEL & CAPACITY DECALS
SECTION 200	INSTALLATION
711105	CABLE & BATTERY REQUIREMENTS - ET & HT CRANES
15660	CABLE & BATTERY INSTALLATION DRAWING
20906-6	STABILITY TESTING
20907	STABILITY CHART
900530A	OPERATION & MAINTENANCE INSTRUCTIONS
900530B	OPERATION & MAINTENANCE INSTRUCTIONS
900530C	OPERATION & MAINTENANCE INSTRUCTIONS
22245	WIRE ROPE INSTALLATION
20872	ADJUSTABLE BOOM REST
SECTION 300	MAINTENANCE & SERVICE
26021	LUBRICATION & MAINTENANCE CHART
19963	MINIMUM VOLTAGE TEST
23225	WIRE ROPE & HOOK SPECIFICATIONS
23084	MANUAL OVERRIDE INSTRUCTIONS
SECTION 400	REPLACEMENT PARTS
26018	REPLACEMENT PARTS DRAWING
26019	REPLACEMENT PARTS LIST
26004	REPLACEMENT FASTENERS LIST
26006	ANTI-2-BLOCK (A2B) REPLACEMENT PARTS DRAWING / LIST (A2B OPTIONAL, NOT INCLUDED)
21600	21515 ELECTRICAL COMPONENT ASSY
26520	WIRING DIAGRAM, ET6K SERIES CRANES
26540	WIRING DIAGRAM, ET6K SERIES CRANES W/ WINCH CONTACTOR
26007	HYDRAULIC SYSTEM COMPONENTS REPLACEMENT PARTS DRAWING
26008	HYDRAULIC SYSTEM SCHEMATIC
21292	REPLACEMENT PARTS LIST; SINGLE / 2-POLE SLIP-RING ASSY.
21293	REPLACEMENT PARTS DRAWING; SINGLE / 2-POLE SLIP-RING ASSY.
23076	21991 PENDANT; REPLACEMENT PARTS DRAWING / LIST (3 FUNCTION)
20837	20586 WINCH REPLACEMENT PARTS DRAWING / LIST
26009	20456 HYDRAULIC POWER UNIT REPLACEMENT PARTS DRAWING / LIST
27041	27243 SLEWING REPLACEMENT PARTS DRAWING
22689	18500-CD STABILIZER REPLACEMENT PARTS DRAWING / LIST
26822	DECAL PLACEMENT
26833	FIELD SERVICE LABEL KIT



VENCO VENTURO INDUSTRIES LLC
CINCINNATI, OHIO

TITLE
TABLE OF CONTENTS

ET6K (ECBAAB-**))

DATE
05-30-23

SUPERSEDES
-

SECTION
-

26010

SECTION 100

DESCRIPTION

&

SPECIFICATIONS

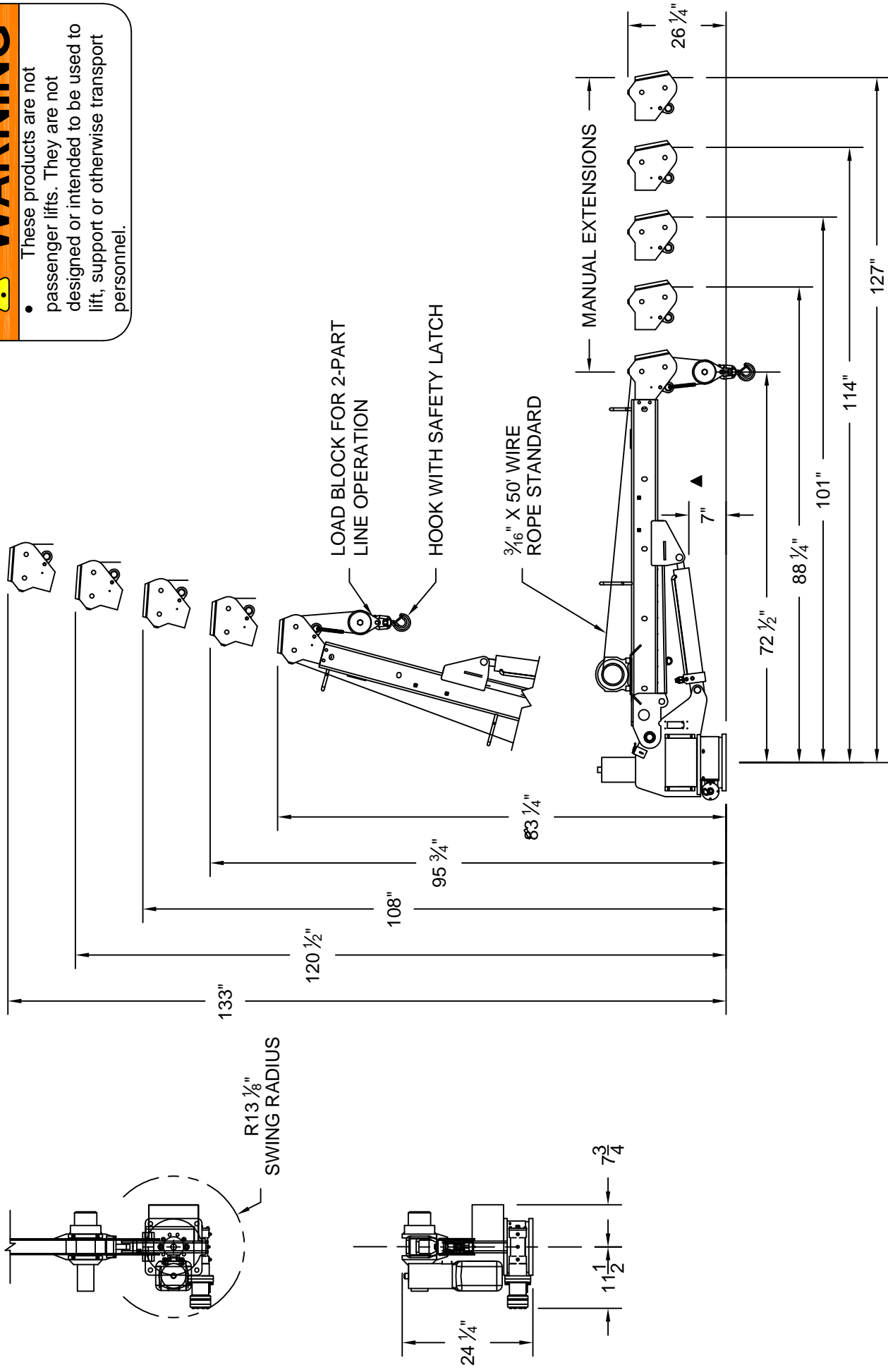


VENCO VENTURO INDUSTRIES LLC
CINCINNATI, OHIO

WARNING



- These products are not passenger lifts. They are not designed or intended to be used to lift, support or otherwise transport personnel.



VENCO VENTURO INDUSTRIES LLC
CINCINNATI, OHIO

TITLE
CRANE DIMENSIONS

ET6K

DATE
05-25-16B
SUPERSEDES
02-23-16A

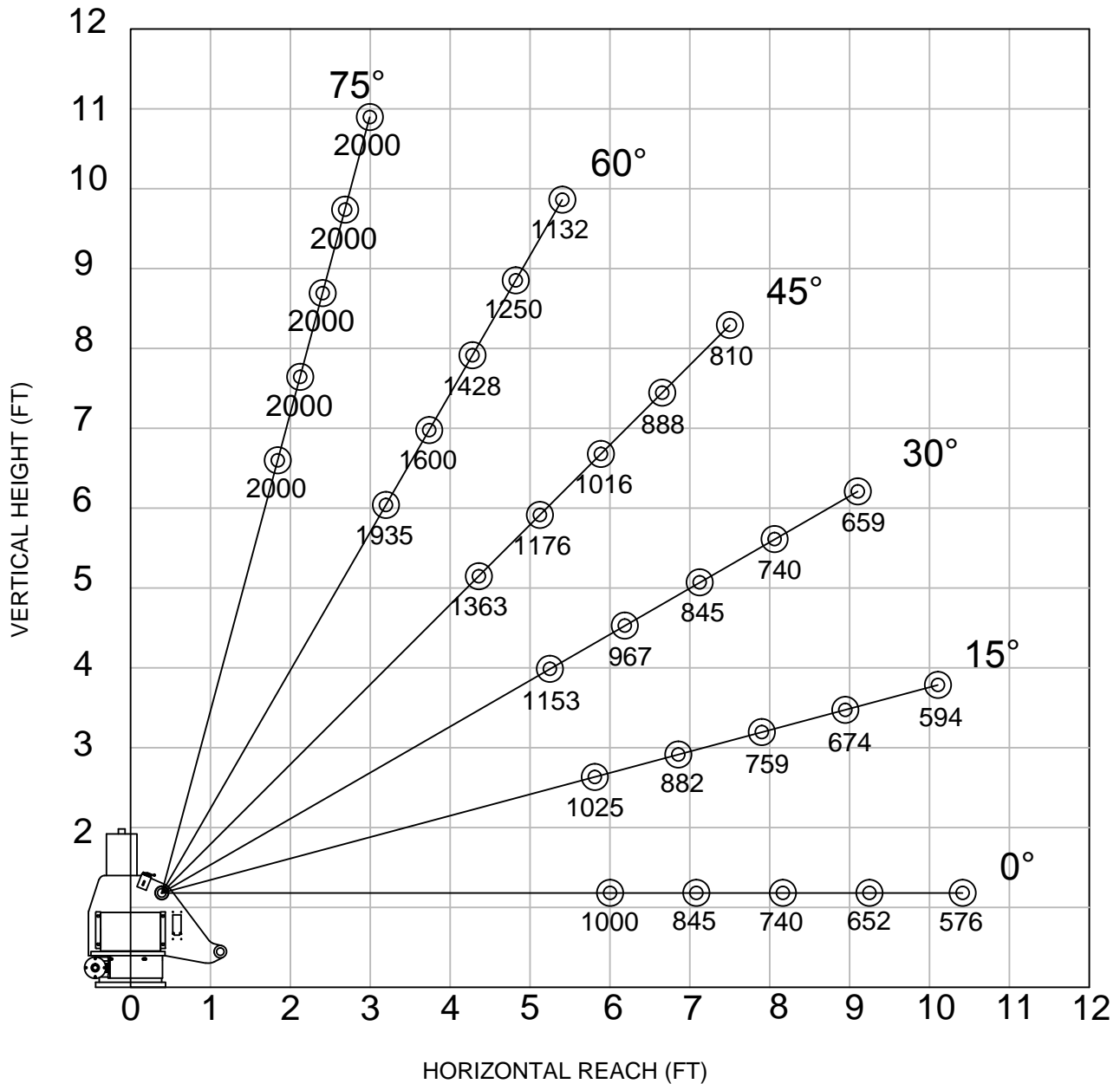
SECTION
C100

26001

ET6K, 6'-10' BOOM

▲ CRANE SERIAL NUMBER: _____

MAXIMUM LOAD CAPACITY CHART



WEIGHT OF LOAD HANDLING DEVICES ARE PART OF THE LOAD AND MUST BE DEDUCTED FROM THE GROSS CAPACITY.

LOAD BLOCK USAGE

1 PART LINE FOR LOADS LESS THAN 1000 LBS

2 PART LINE FOR LOADS OF 1000 LBS AND GREATER

WEIGHT OF LOAD BLOCK = 5 LBS



VENCO VENTURO INDUSTRIES LLC
CINCINNATI, OHIO

TITLE
MAXIMUM LOAD CAPACITY

ET6K, 6'-10' BOOM

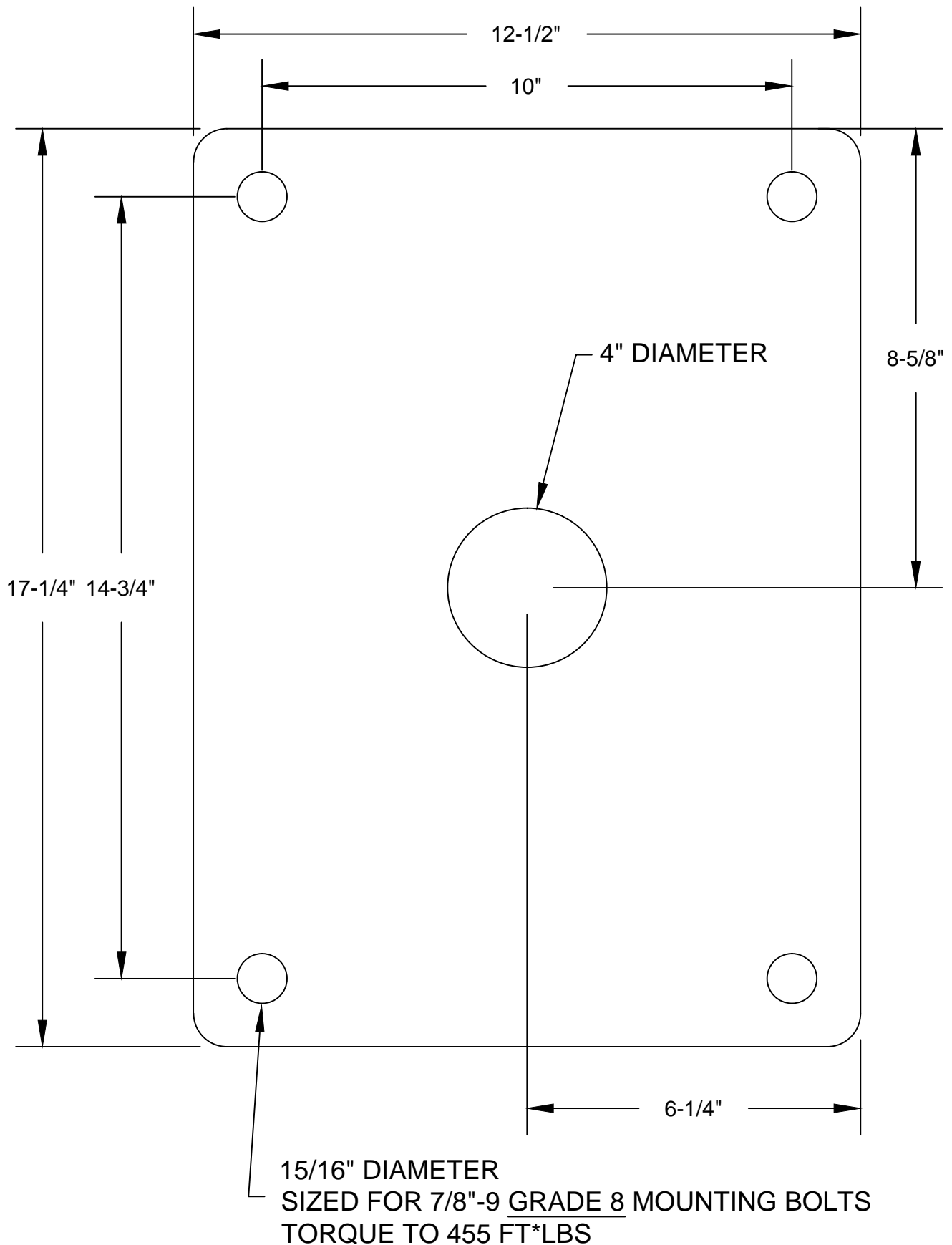
DATE
05-03-16A

SUPERSEDES
09-02-14

SECTION
C100

27423

CRANE BASE MOUNTING HOLE TEMPLATE



VENCO VENTURO INDUSTRIES LLC
CINCINNATI, OHIO

TITLE
MOUNTING DIMENSIONS

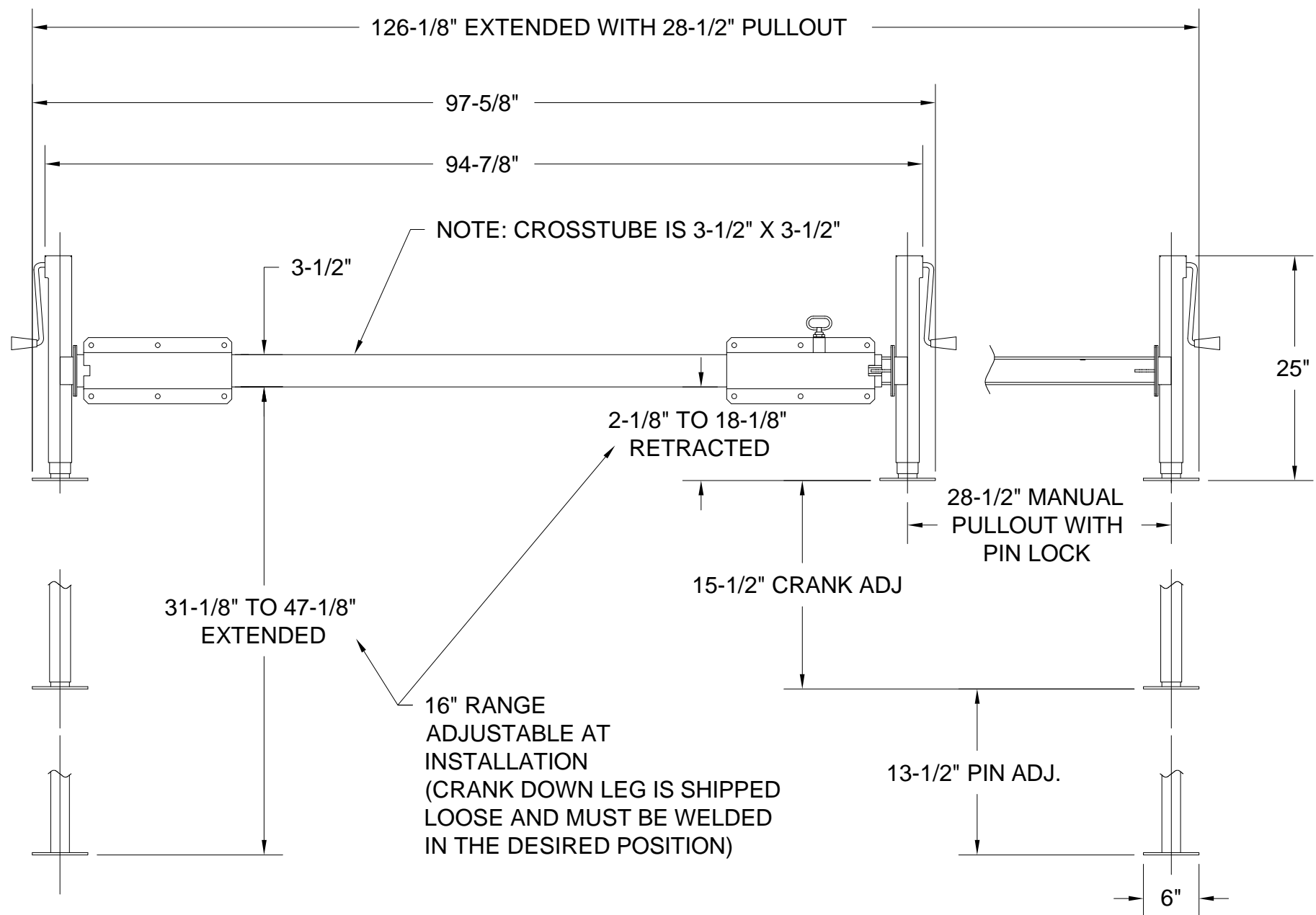
ET6K

DATE
05-30-23

SUPERSEDES
-

SECTION
C100

26011



MANUFACTURING, INC.
CINCINNATI, OHIO

TITLE
INSTALLATION DRAWING

18500-CD STABILIZER

DATE
12-20-13B

SUPERSEDES
01-13-05A

SECTION
C100

22686

13500 STABILIZER

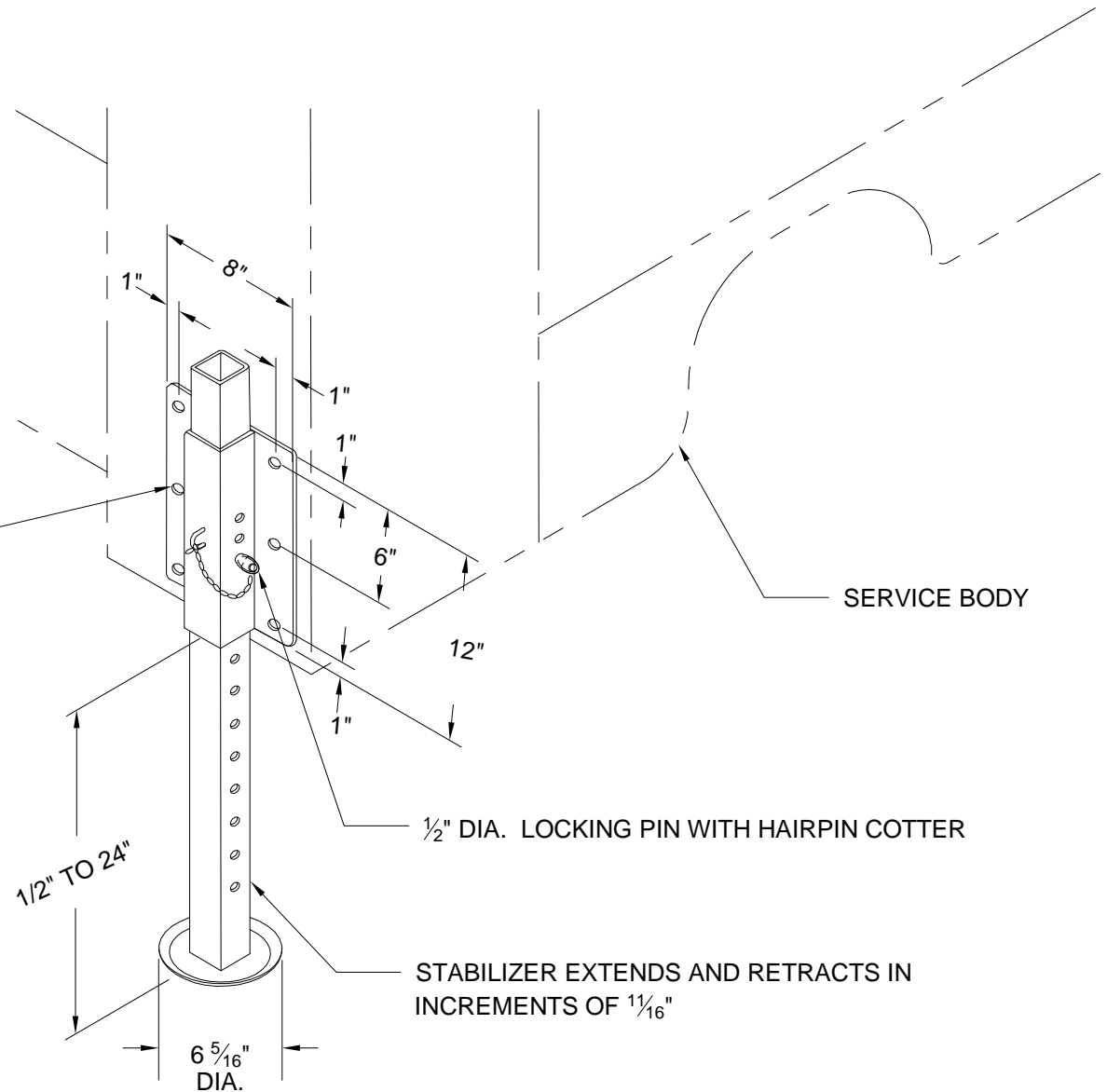


WARNING

- These products are not for use with passenger lifts. They are not designed or intended to be used with devices that lift, support or otherwise transport personnel.

(6) $\frac{3}{8}$ " DIA. BOLT HOLES

TYPICAL INSTALLATION OF
MANUAL STABILIZER ON
VEHICLE WITH SERVICE BODY.



MANUFACTURING, INC.
CINCINNATI, OHIO

TITLE

INSTALLATION DRAWING

ET6/8/12K(X)

DATE

12-20-13F

SUPERSEDES

10-02-12E

SECTION

C100

13509

23961 STABILIZER

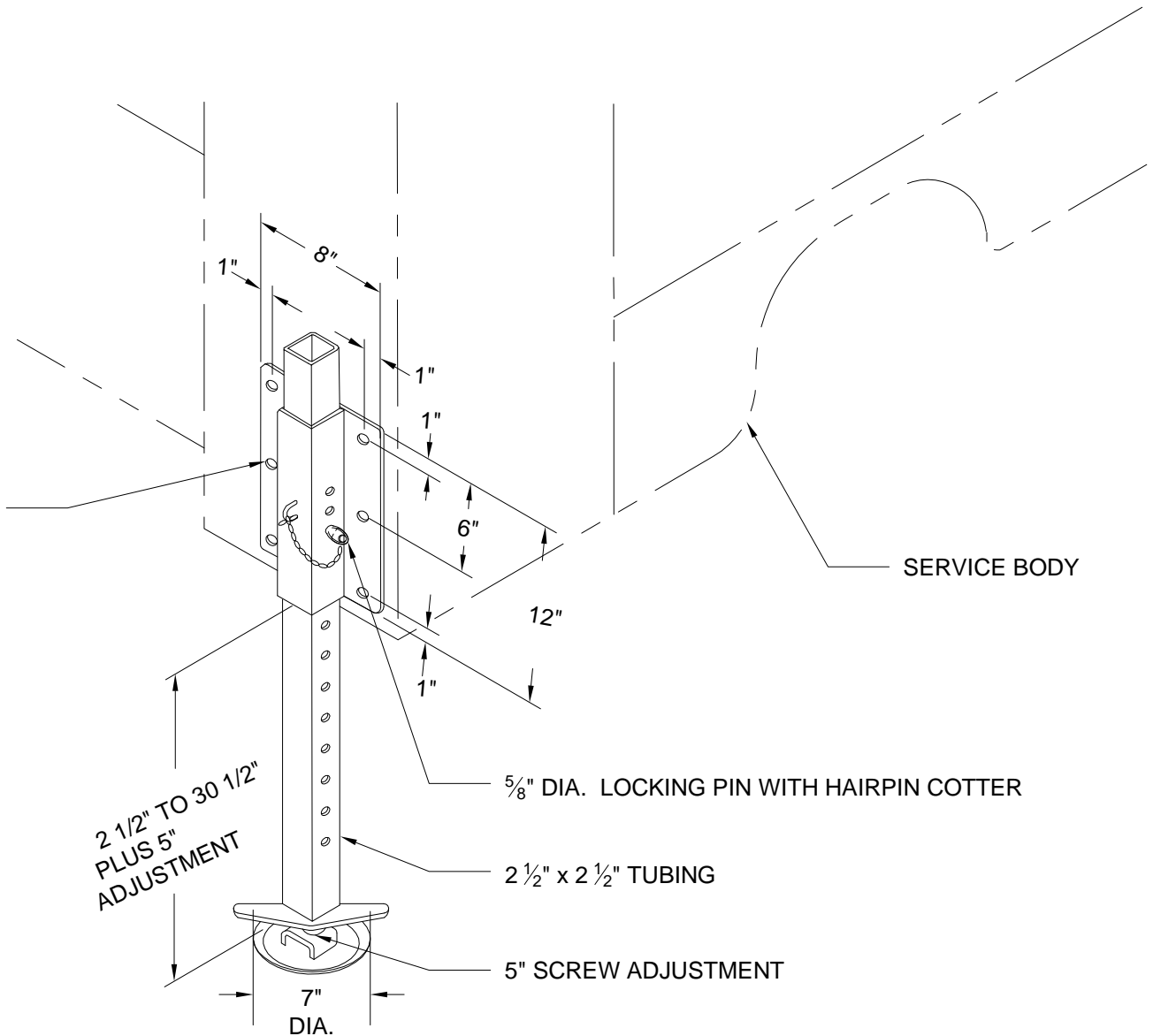


WARNING

- These products are not for use with passenger lifts. They are not designed or intended to be used with devices that lift, support or otherwise transport personnel.

(6) 1/2" DIA. BOLT HOLES

TYPICAL INSTALLATION OF 23961
MANUAL STABILIZER ON VEHICLE
WITH SERVICE BODY EQUIPPED
WITH ET/HT25 SERIES CRANES.



SERVICE BODY

5/8" DIA. LOCKING PIN WITH HAIRPIN COTTER

2 1/2" x 2 1/2" TUBING

5" SCREW ADJUSTMENT

7" DIA.

2 1/2" TO 30 1/2"
PLUS 5"
ADJUSTMENT



VENCO VENTURO INDUSTRIES LLC
CINCINNATI, OHIO

TITLE

INSTALLATION DRAWING

ET6/8/10/12/25K(X), HT25KX

DATE

12-20-13H

SUPERSEDES

04-25-12G

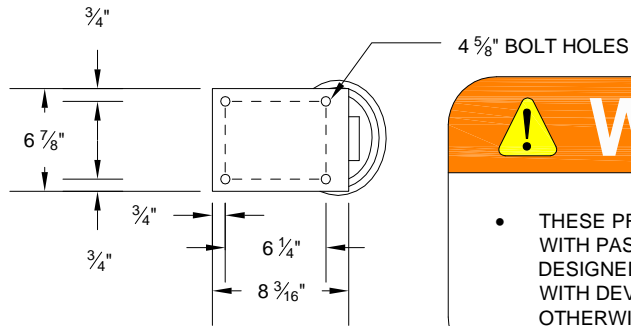
SECTION

C100

123961

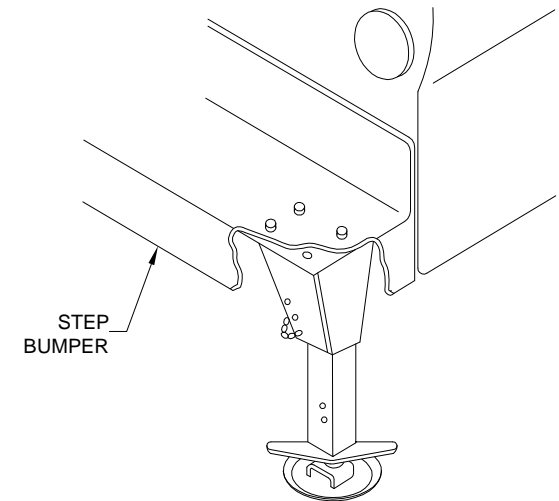
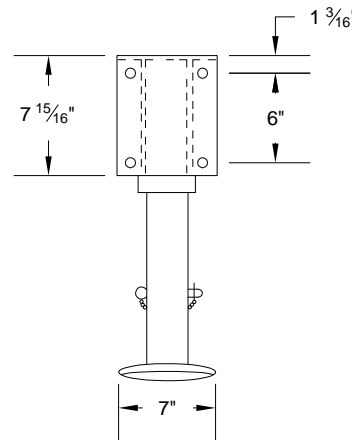
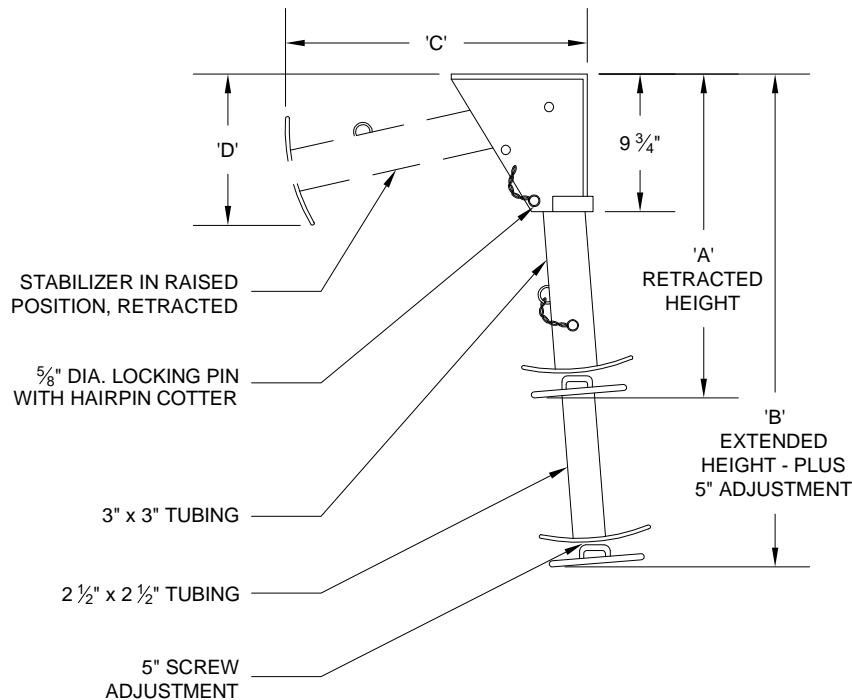
23960 STABILIZER SERIES, ET/HT25 SERIES CRANES

PART NO.	DESCRIPTION	'A'	'B'	'C'	'D'
23960-1	SHORT STABILIZER	20 ½"	28 ½"	21"	7 ¼"
23960-2	LONG STABILIZER	28 ½"	44 ½"	29"	10 ½"

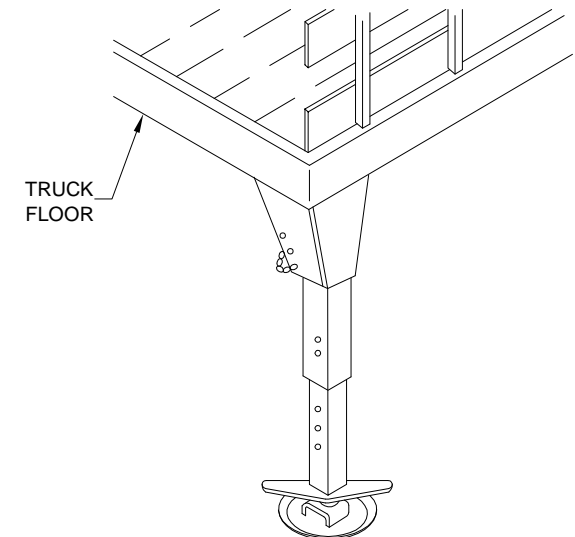


WARNING

- THESE PRODUCTS ARE NOT FOR USE WITH PASSENGER LIFTS. THEY ARE NOT DESIGNED OR INTENDED TO BE USED WITH DEVICES THAT LIFT, SUPPORT OR OTHERWISE TRANSPORT PERSONNEL.



TYPICAL SHORT STABILIZER INSTALLATION



TYPICAL LONG STABILIZER INSTALLATION



VENCO VENTURO INDUSTRIES LLC
CINCINNATI, OHIO

TITLE

INSTALLATION DRAWING

ET6/8/10/12/25K(X), HT25KX

DATE

12-20-13H

SUPERSEDES

04-25-12G

SECTION

C100

123960

SECTION 150

SAFETY



VENCO VENTURO INDUSTRIES LLC
CINCINNATI, OHIO

CRANE SAFETY AND HAZARDS

CAUTIONS

1. INSPECT VEHICLE AND CRANE, INCLUDING OPERATION, PRIOR TO USE DAILY.
2. DO NOT USE THIS EQUIPMENT EXCEPT ON FIRM LEVEL GROUND WITH CRANE MOUNTED ON FACTORY-RECOMMENDED TRUCK.
3. BEFORE OPERATING THE CRANE, REFER TO MAXIMUM LOAD (CAPACITY) CHART ON CRANE FOR OPERATING (LOAD) LIMITATIONS.
4. DO NOT OPERATE, WALK, OR STAND BENEATH BOOM OR A SUSPENDED LOAD.
5. ATTACH PENDANT CORD SUPPORT SNAP TO ATTACHMENT POINT BEFORE PLUGGING IN PENDANT, IF SO EQUIPPED.
6. UNPLUG PENDANT AND SHUT OFF MASTER DISCONNECT SWITCH WHEN CRANE IS NOT IN USE.
7. FOR TRAVEL, BOOM MUST BE IN STOWED POSITION.

DANGER

- THIS CRANE IS NOT A PASSENGER LIFT
- IT IS NOT DESIGNED OR INTENDED TO BE USED TO LIFT, SUPPORT, OR OTHERWISE TRANSPORT PERSONNEL.

YOU MUST NOT OPERATE THIS CRANE, UNLESS:

1. YOU HAVE BEEN TRAINED IN THE SAFE OPERATION OF THIS CRANE, AND
2. YOU KNOW AND FOLLOW THE SAFETY AND OPERATING RECOMMENDATIONS CONTAINED IN THE MANUFACTURER'S MANUALS, YOUR EMPLOYER'S WORK RULES, AND APPLICABLE GOVERNMENT REGULATIONS. AN UNTRAINED OPERATOR SUBJECTS HIMSELF AND OTHERS TO DEATH OR SERIOUS INJURY.

ELECTROCUTION HAZARD

- THIS MACHINE IS NOT INSULATED.
- MAINTAIN SAFE CLEARANCES FROM ELECTRICAL LINES AND APPARATUSES.
- YOU MUST ALLOW FOR BOOM SWAY, ROCK, OR SAG, AND ELECTRICAL LINE AND LOAD-LINE SWAYING
- THIS LIFTING DEVICE DOES NOT PROVIDE PROTECTION FROM CONTACT WITH OR PROXIMITY TO AN ELECTRICALLY CHARGED CONDUCTOR.
- YOU MUST MAINTAIN A CLEARANCE OF AT LEAST 10 FEET BETWEEN ANY PART OF THE CRANE, LOAD-LINE, OR LOAD, AND ANY ELECTRICAL LINE OR APPARATUS CARRYING UP TO 50,000 VOLTS. REFER TO DRAWING 15394 FOR ADDITIONAL INFORMATION.
- **DEATH OR SERIOUS INJURY** WILL RESULT FROM CONTACT OR INADEQUATE CLEARANCES.

OVERLOAD SENSING SYSTEM - STANDARD ON ALL CRANES

1. IF OVERLOADED, THE WINCH UP, BOOM DOWN, AND (OPTIONAL) BOOM OUT FUNCTIONS WILL AUTOMATICALLY, SHUT OFF TO PREVENT INCREASED OVERLOAD.
2. ON CRANES EQUIPPED WITH AN OPTIONAL OVERLOAD ALARM, IT WILL ALSO SOUND.
3. IF AN OVERLOAD OCCURS, USE THE WINCH DOWN, BOOM UP OR BOOM IN FUNCTIONS TO RELIEVE THE OVERLOAD.
4. THE OVERLOAD SENSING SYSTEM IS INOPERATIVE IF THE BOOM ELEVATION IS AT THE BOTTOM OR TOP LIMIT OF TRAVEL. TO RELIEVE THIS CONDITION, RAISE OR LOWER THE BOOM SLIGHTLY BEFORE LIFTING THE LOAD.
5. SEE MANUAL FOR TESTING THE OVERLOAD SYSTEM.

NOTICE - WARRANTY VOID IF DISCONNECTED

THE OVERLOAD SENSING SYSTEM HAS BEEN INSTALLED AS A SAFETY FEATURE TO PROTECT THE EQUIPMENT AND THE OPERATOR.

DO NOT DISCONNECT THIS SYSTEM



VENCO VENTURO INDUSTRIES LLC
CINCINNATI, OHIO

TITLE

SAFETY & HAZARDS

DATE

01-29-15K

SECTION

C150

ELECTRIC CRANES

SUPERSEDES

12-20-13J

850711

CRANE SAFETY AND HAZARDS - CONT'D

OVERLOAD ALARM SYSTEM - OPTIONAL

1. OVERLOAD ALARM HORN SOUNDS IF RATED LOAD IS EXCEEDED AT ANY REACH.
2. IF ALARM SOUNDS, RAISE BOOM OR LOWER WINCH TO REMOVE OVERLOAD.
3. ALWAYS RAISE BOOM SLIGHTLY BEFORE LIFTING LOAD. WARNING SYSTEM INOPERATIVE WHEN CYLINDER IS COMPLETED BOTTOMED.
4. ALARM CAN BE TESTED BY TYING DOWN BOOM WITH WINCH CABLE AND OPERATING BOOM UP OR BY RAISING BOOM AGAINST UP LIMIT STOP.

NOTICE - WARRANTY VOID IF DISCONNECTED

THIS ALARM SYSTEM HAS BEEN INSTALLED AS A SAFETY FEATURE TO PROTECT BOTH THE EQUIPMENT AND THE OPERATOR.

DO NOT DISCONNECT THIS SYSTEM

INTENTIONALLY LEFT BLANK



VENCO VENTURO INDUSTRIES LLC
CINCINNATI, OHIO

TITLE

SAFETY & HZRDS, CONT.

DATE

01-29-15

SECTION

C150

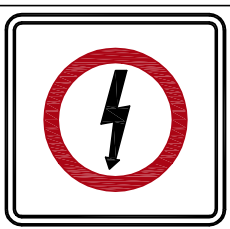
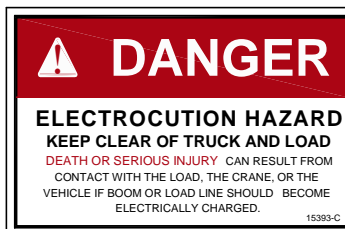
ELECTRIC CRANES

SUPERSEDES

-

850712

VEHICLE & CRANE MOUNTED ELECTRICAL HAZARD SIGN APPLICATION & INFORMATION



SIGN NO. 15393 DISPLAYS THE INTERNATIONAL SYMBOL FOR ELECTRICITY AND WARNS OF DANGER FROM AN ELECTRICALLY CHARGED VEHICLE, CRANE, OR LOAD. FOUR ARE RECOMMENDED (ONE FOR EACH SIDE AND ONE FOR EACH END OF VEHICLE) TO BE APPLIED IN LOCATIONS WHICH ARE READILY VISIBLE TO GROUND PERSONNEL.



SIGN NO. 15401 PROVIDES ADDITIONAL WARNING OF LEGAL REQUIREMENTS WHEN OPERATING NEAR HIGH VOLTAGE LINES. THIS SIGN IS PLACED ON THE CONTROL PENDANT SIDE OF BOOM.

Table A - Minimum Clearance Distances

Voltage (nominal, kV, alternating current)	Minimum clearance distance (feet) *
Up to 50.....	10
over 50 - 200.....	15
over 200 - 350.....	20
over 350 - 500.....	25
over 500 - 750.....	35
over 750 - 1000.....	45
Over 1000.....	(as established by the utility owner/operator or registered professional engineer who is a qualified person with respect to electrical power transmission and distribution).

Table T - Minimum Clearance Distances While Traveling With No Load

Voltage (nominal, kV, alternating current)	While traveling - minimum clearance distance (feet) *
0 - 0.75.....	4
over 0.75 - 50.....	6
over 50 - 345.....	10
over 345 - 750.....	16
over 750 - 1000.....	20
Over 1000.....	(as established by the utility owner/operator or registered professional engineer who is a qualified person with respect to electrical power transmission and distribution).

* NOTE: ENVIRONMENTAL CONDITIONS SUCH AS FOG, SMOKE, OR PRECIPITATION MAY REQUIRE INCREASED CLEARANCES



VENCO VENTURO INDUSTRIES LLC
CINCINNATI, OHIO

TITLE	DATE	SECTION
HAZARD APPS & INFO	02-21-14M	C150
ET/HT CRANES	SUPERSEDES 12-20-13L	15394

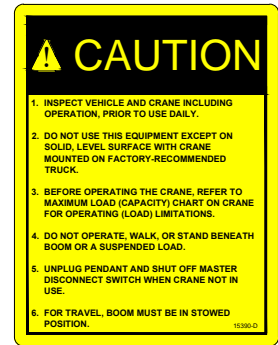
DECAL #: 15390

DESCRIPTION: CAUTION, INSPECT VEHICLE & CRANE...

PURPOSE: TO INFORM THE OPERATOR OF KEY OPERATING REQUIREMENTS.

QUANTITY: 1

PLACEMENT: REAR COVER OR SIDE OF CRANE



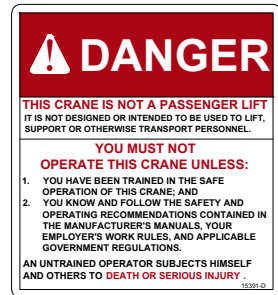
DECAL #: 15391

DESCRIPTION: DANGER, NOT A PASSENGER LIFT

PURPOSE: TO INFORM OPERATOR NOT TO LIFT, SUPPORT, OR TRANSPORT PERSONNEL, AND TO ENSURE OPERATOR IS ADEQUATELY TRAINED.

QUANTITY: 1

PLACEMENT: REAR COVER OR SIDE OF CRANE



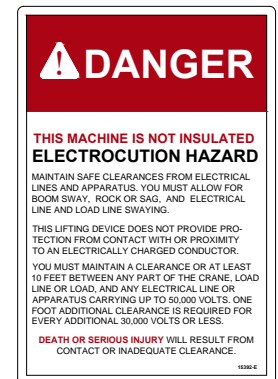
DECAL #: 15392

DESCRIPTION: DANGER, ELECTROCUTION HAZARD, MACHINE (CRANE)

PURPOSE: TO INFORM OPERATOR THAT MACHINE (CRANE) REPRESENTS AN ELECTROCUTION HAZARD SHOULD IT COME CLOSE TO OR IN CONTACT WITH AN ELECTRICAL VOLTAGE SOURCE.

QUANTITY: 1

PLACEMENT: REAR COVER OR SIDE OF CRANE



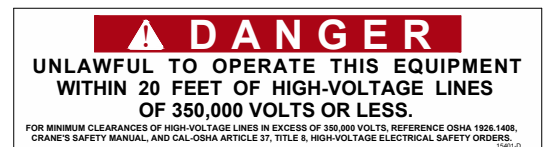
DECAL #: 15401

DESCRIPTION: DANGER, UNLAWFUL TO OPERATE

PURPOSE: TO INFORM OPERATOR OF PROPER OPERATION IN VICINITY OF ELECTRICAL LINES.

QUANTITY: 1

PLACEMENT: RING COVER OR SIDE OF CRANE



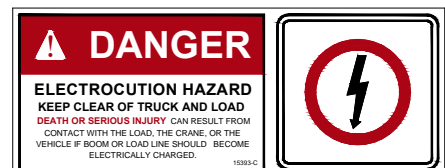
DECAL #: 15393

DESCRIPTION: DANGER, ELECTROCUTION HAZARD, VEHICLE (TRUCK)

PURPOSE: WARNS OF DANGER FROM ELECTRICALLY CHARGED VEHICLE, CRANE, OR LOAD.

QUANTITY: 4

PLACEMENT: EACH SIDE & EACH END OF VEHICLE



VENCO VENTURO INDUSTRIES LLC
CINCINNATI, OHIO

TITLE

SAFETY DECALS

VENTURO CRANES

DATE

04-29-16E

SUPERSEDES

10-24-13D

SECTION

C150

21353

PART NO.: 14473-2

DECAL: CONDUCTIVE GREASE

FUNCTION: To show the operator where to apply grease.

QUANTITY: Varies

PLACEMENT: Near grease fittings.



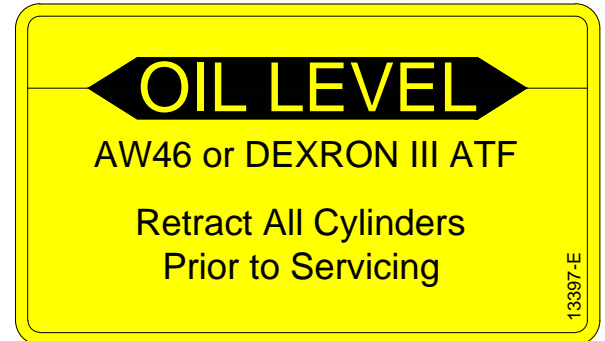
PART NO.: 13397

DECAL: OIL LEVEL

FUNCTION: To inform the operator of proper oil level to maintain.

QUANTITY: 1

PLACEMENT: Side of hydraulic power unit.



PART NO.: 15398

DECAL: UNPLUG REMOTE CONTROL

FUNCTION: To inform the operator to unplug remote control when not in use.

QUANTITY: 1

PLACEMENT: Near pendant socket.



MANUFACTURING, INC.
CINCINNATI, OHIO

TITLE
DECALS

ET CRANES

DATE
11-12-19E

SUPERSEDES
12-23-13D

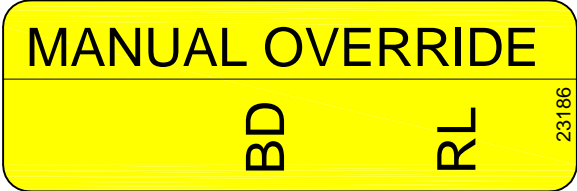
SECTION
C150

21354

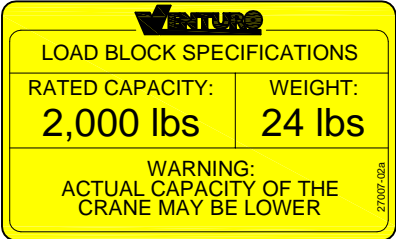
PART NO.: 23185
DECAL: MANUAL OVERRIDE DECAL (ET6/8/12K)
FUNCTION: To show the manual override ports.
QUANTITY: 1
PLACEMENT: Right side of housing.



PART NO.: 23186
DECAL: MANUAL OVERRIDE DECAL (ET6/8/12K)
FUNCTION: To show the manual override ports.
QUANTITY: 1
PLACEMENT: Left side of housing.



PART NO.: 27007-02a
DECAL: LOAD BLOCK CAPACITY DECAL
FUNCTION: To show the capacity of load block.
QUANTITY: 2
PLACEMENT: Each side of load block.



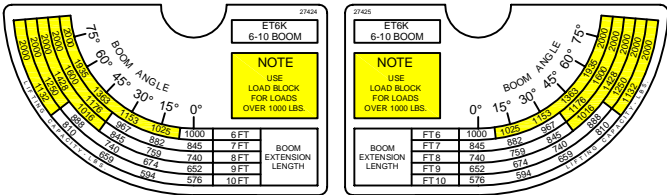
INTENTIONALLY LEFT BLANK



VENCO VENTURO INDUSTRIES LLC
CINCINNATI, OHIO

TITLE	DATE	SECTION
DECAL LIST / DWG	01-15-15B	C150
ET6K ▲	SUPERSEDES 03-10-14A	26041

PART NO.: 27424 (LEFT) & 27425 (RIGHT)
DECAL: CRANE CAPACITY
FUNCTION: To show the operator the crane capacities of the crane.
QUANTITY: 1 each
PLACEMENT: One on each side of boom.



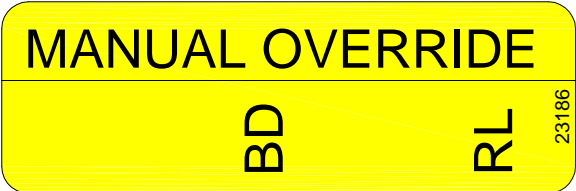
PART NO.: 26824
DECAL: MODEL NUMBER (ET6K)
FUNCTION: To show the model of the crane.
QUANTITY: 2
PLACEMENT: One on each side of boom.



PART NO.: 23185
DECAL: MANUAL OVERRIDE RIGHT
FUNCTION: To show the manual override ports.
QUANTITY: 1
PLACEMENT: Right side of housing.



PART NO.: 23186
DECAL: MANUAL OVERRIDE LEFT
FUNCTION: To show the manual override ports.
QUANTITY: 1
PLACEMENT: Left side of housing.



VENCO VENTURO INDUSTRIES LLC
CINCINNATI, OHIO

TITLE
DECAL LIST / DWG
ET6K ▲

DATE
11-18-14A
SUPERSEDES
12-23-13

SECTION
C150
26825

SECTION 200

INSTALLATION



VENCO VENTURO INDUSTRIES LLC
CINCINNATI, OHIO

!! IMPORTANT !!

ADEQUATE WIRING IMPERATIVE FOR PROPER OPERATION

1. PROPER GROUND PATH - SEE DWG 15660
2. CURRENT DRAW IS SEVERAL HUNDRED AMPERES - ADEQUATE WIRE SIZE AND BATTERY CAPACITY IS ABSOLUTELY ESSENTIAL (SEE CHART BELOW).

▲ MINIMUM WIRE GAUGE AND AUXILIARY BATTERY SIZE

▲ MINIMUM WIRE GAUGE AND AUXILIARY BATTERY SIZE										
MODEL	TOTAL LENGTH OF CABLE (FT) *								▲ 12 VOLT AUXILIARY BATTERY REQUIREMENTS	
	0-20	21-25	26-30	31-40	41-50	51-60	61-70	71-80	CCA (A) **	RC (MIN) ***
▲ CE1500 CE6K CT2000 CT2003/4/5 DT7K	#4	#4	#2	#2	#1	#0	#0	#00	350	100
ET5500MPB ET5500R ET6KMPB ET6KR ET6K ET8K ET10K ET12K	#2	#2	#1	#0	#00	NOT RECOMMENDED			450	100
ET8KX ET10KX ET12KX ▲ ET12KXP	#2	#2	#1	#0	#00	NOT RECOMMENDED			550	150
ET18K(X) ET25K(X) ET30KX ET36KX	SEE DRAWING 15660 FOR CABLE AND BATTERY REQUIREMENTS									

* INCLUDES GROUND CABLE

** CCA = COLD CRANKING AMPS AT 0° (F).

*** RC = RESERVE CAPACITY IN MINUTES AT 25 AMPS AND 80° (F).
THE RC RATING IS A MEASURE OF THE PERIOD OF TIME THE BATTERY CAN SUPPLY A GIVEN CURRENT WITHOUT RECHARGING.



VENCO VENTURO INDUSTRIES LLC
CINCINNATI, OHIO

TITLE
CABLE & BATTERY

ELECTRIC CRANES

DATE
07-30-18X

SUPERSEDES
09-27-17W

SECTION
C200

711105

RECOMMENDED CIRCUIT BREAKER TABLE		
CRANE	DESCRIPTION	PART NO.
CT310KX	250 AMP, MAN RESET	22946-250
DT7	250 AMP, MAN RESET	22946-250
CE-1500-FB	150 AMP, MAN RESET	22946-150
CE6K	150 AMP, MAN RESET	22946-150
CT200X	250 AMP, MAN RESET	22946-250
ET6K	250 AMP, MAN RESET	22946-250
ET8/12K(X)	250 AMP, MAN RESET	22946-250
ET12KXP	300 AMP, MAN RESET	22946-300
ET16/18KX-16	250 AMP, MAN RESET	22946-250
ET16/18KX-20	300 AMP, MAN RESET	22946-300
ET25/30KX	300 AMP, AUTO RESET	22946-300
ET36KX	300 AMP, AUTO RESET	22946-300

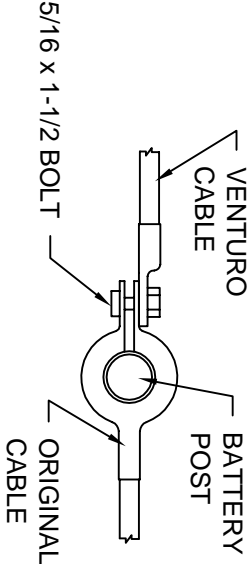
BATTERY REQUIREMENTS

- 12 VOLT VEHICLE BATTERY REQUIREMENTS
- 625 COLD CRANKING AMPS (AT 0° F)
- 160 MINUTES RESERVE CAPACITY
- 102 PLATES, 105 AMP-HR

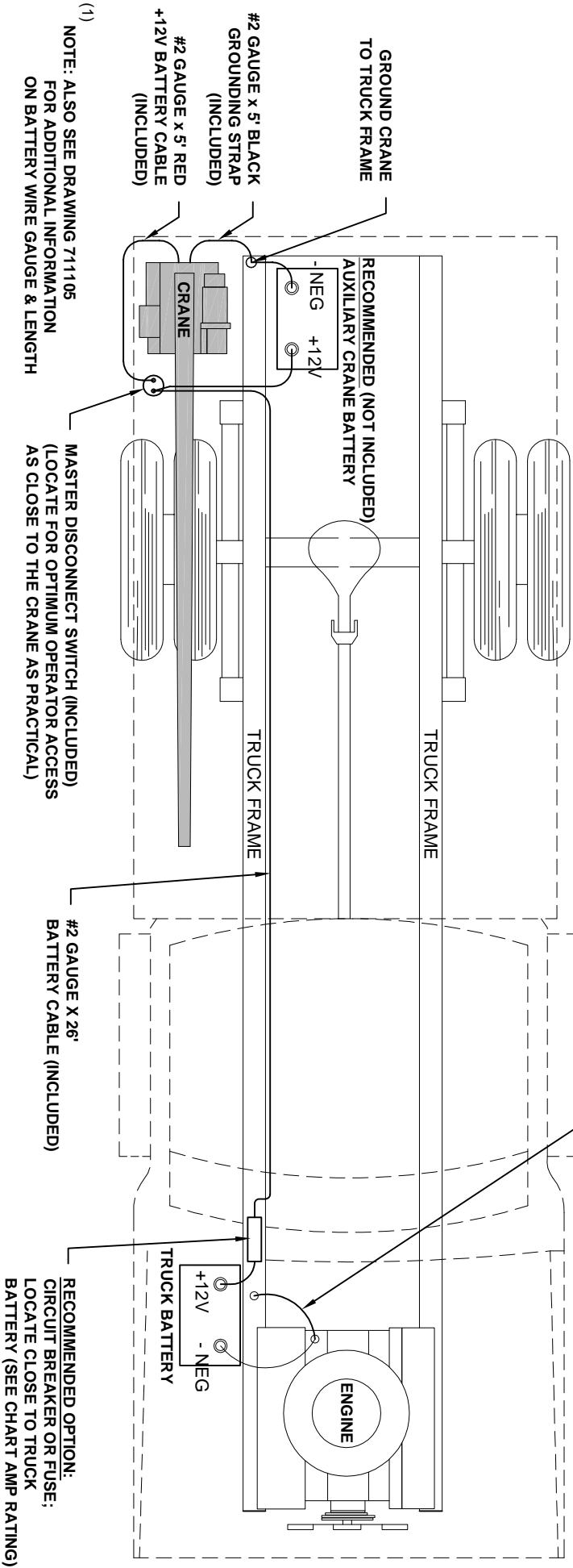
- (1) 12 VOLT AUXILIARY BATTERY REQUIREMENTS
- SEE MINIMUM WIRE GAUGE AND BATTERY SIZE

NOTE: OPERATING WITH THE VEHICLE BATTERY 'ONLY' IS PERMISSIBLE, BUT NOT RECOMMENDED.

RECOMMENDED BATTERY TERMINAL ATTACHMENT



**INSTALL #2 GAUGE GROUND STRAP FROM ENGINE TO TRUCK FRAME
(REQUIRED IF NEGATIVE FROM BATTERY IS CONNECTED TO ENGINE)**



(1)
**NOTE: ALSO SEE DRAWING 7111105
FOR ADDITIONAL INFORMATION
ON BATTERY WIRE GAUGE & LENGTH**



VENCO VENTURO INDUSTRIES LLC
CINCINNATI, OHIO

TITLE	DATE	SECTION
BATTERY CABLE & COMPONENT INSTALL	09-03-20M	C200
ET CRANES	SUPERSEDES 07-30-18L	156660

STABILITY TEST - ET6K-10' SERIES

Overview

Venturo follows the guidelines of ANSI B30.5 in defining stability. Generally speaking, a truck is considered stable as long as it is not on the verge of tipping - i.e. with the truck level, at least one tire on each corner of the truck must remain in contact with the ground.

It is important to note that nearly every installation is unique and will, therefore, typically require stability testing.

The procedure outlined below follows ANSI's (B30.5 - 5-1.1.1) specified "maximum load rating" of 85% of truck stability.

Testing Procedure

1. Locate the truck on firm, level ground and set parking brake.
2. Fully deploy stabilizers, making sure they are firmly in contact with supportive ground; use stabilizer pads as required. The tires of the truck should remain in full contact with the ground.
3. Inspect wire rope and other key components of crane (consult owners manual for more information).
4. Conduct an operational check of all crane functions.
5. Locate the Overload Pressure Switch at the base of the elevation cylinder
 - 5.1. Disconnect the black & white wires from the housing and then connect the black & white wires together to by-pass the Overload Pressure Switch for the stability test. **Note: The black & white wires MUST be reconnected to the Overload Pressure Switch after the stability test has been completed.**
6. Use a **Test Weight** weighing a **minimum** of **678 lbs**, (includes load block weight of 8 lbs.) to a **maximum of 705 lbs**.
7. Position the boom level and fully retracted.
8. Referring to the Stability Chart (drawing 20907) rotate the crane to a position between 1 and 2 o'clock (truck cab is facing 12 o'clock) to begin testing.
9. Use the winch to lift the Test Weight; DO NOT allow the weight to be more than 6" off the ground at any time during testing (for safety).
10. Using the test weight, extend the boom slowly, until one of the two conditions occur:
 - 10.1. Full extension is reached - Mark the ZONE in question **100%**
 - 10.2. The truck becomes unstable i.e. a tire lifts off of the ground
 - 10.2.1. Retract the boom until at least one tire on each corner of the truck is making contact with the ground
 - 10.2.2. Use the formula below to determine the allowable **% of Rated Capacity** for the ZONE in question.
11. Note: The **"Max Stable Reach in inches"** is measured from the **center of rotation** of the crane housing to the **lifting load hook**.

$$\% \text{ Rated Capacity} = \frac{\text{"Max Stable Reach" in inches}}{127} \times 100$$

12. Record the **% of Rated Capacity** in the appropriate blank (region) on the Crane Stability page (ref. 20907) and decal.
13. Repeat Steps 7 through 12 for each ZONE on the stability page.



VENCO VENTURO INDUSTRIES LLC
CINCINNATI, OHIO

TITLE

STABILITY TEST

ET6K-10' SERIES

DATE

03-17-23G

SUPERSEDES

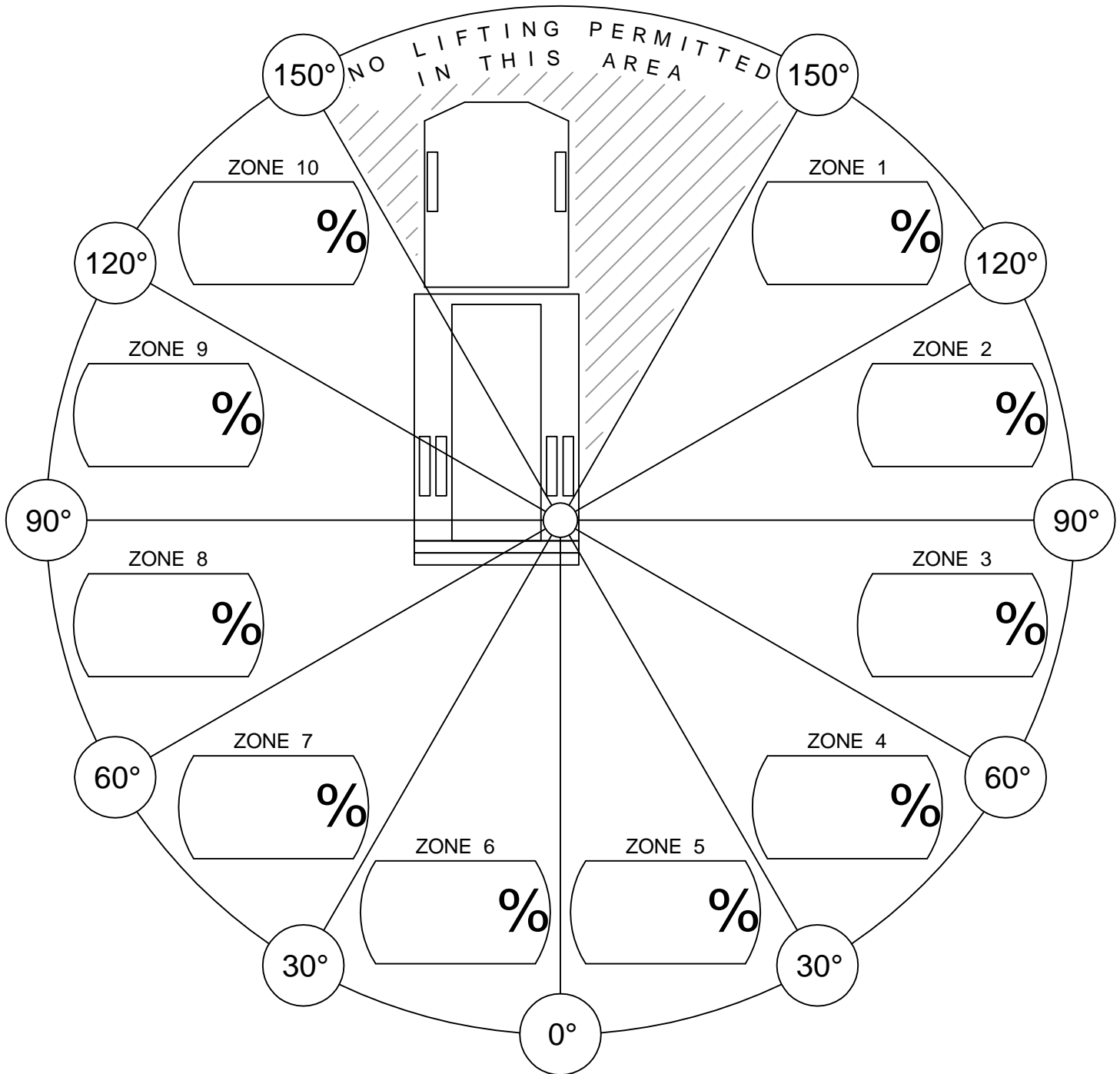
11-23-21F

SECTION

C200

20906-6

CRANE STABILITY



% of Rated Capacity for each of the 10 regions are provided above.

CONDITIONS:

- STABILIZERS FULLY EXTENDED & DOWN, ON FIRM LEVEL GROUND.



VENCO VENTURO INDUSTRIES LLC
CINCINNATI, OHIO

TITLE
STABILITY CHART

VENTURO CRANES

DATE
05-11-17F

SUPERSEDES
02-21-14E

SECTION
C200

20907

CRANE OPERATION AND MAINTENANCE INSTRUCTIONS

SAFETY

- ▲ Before operating this crane, read and understand these instructions, the "CRANE SAFETY AND HAZARDS" pages, and review all safety and instruction labels on the crane.

CRANE INSPECTION

Before operating this crane, inspect for wear, damage, and oil leakage. After the wire rope has been run out, check for wear, kinks, and broken strands. Check the hook and safety latch for damage. Correct problems before using the crane.

CAPACITY

Before operating this crane, review the capacity charts on the sides of the boom to relate the load to be lifted to the boom length and angle. The boom angle is indicated by a gravity arrow.

LOAD BLOCK

- ▲ If the load exceeds:
 - 1000 lbs. for the ET6K, or
 - 1600 lbs. for the ET8 Series and ET10K(X), or
 - 1750 lbs. for the ET12 Series,or if reduced winching speed for better control of smaller loads is required, use the load block to rig the crane for two-part line operation. Refer to your crane's "MAXIMUM LOAD CAPACITY" page within this manual.

CONTROLS

This crane is operated by a remote control pendant. The pendant should be unplugged and stored in a compartment or the cab when the crane is not in use.

Before plugging the pendant in, inspect the plug, socket, cord, and pendant head, and switches for damage. Actuate all switches in both directions to verify that they all have the same feel and sound, and that they return to the center position.

Plug the pendant into the socket on the right side of the crane and, if applicable, snap the strain relief tether to the crane housing.

Turn on the Master Disconnect Switch. Use "WINCH DOWN" to release tension on the wire rope and unhook it from the storage tie-down position.

Use "BOOM UP" to elevate the boom from the boom rest position.

Check all control functions to see that they are working correctly.



VENCO VENTURO INDUSTRIES LLC
CINCINNATI, OHIO

TITLE	DATE	SECTION
INSTALLATION DWG	03-08-19J	C200
ET6/8/12 SERIES CRANES	SUPERSEDES 07-30-18H	900530A

CRANE OPERATION AND MAINTENANCE INSTRUCTIONS

CONTROL FUNCTIONS

WINCH UP and WINCH DOWN - Raises and lowers the load with the wire rope.

POWER EXTENSION - "Up" raises the boom elevation by operating the valves and the electric hydraulic power unit. "DOWN" operates a solenoid release valve mounted on the cylinder to lower the load and/or boom by gravity at a controlled rate. A check valve on the cylinder prevents the boom from coming down if a hose breaks. A flow control valve controls the lowering rate.

POWER ROTATION - "L" and "R" control the direction of rotation. The ET6K, ET8K(X), ET10K(X) or ET12K(X) can be rotated continuously thru 360° or more. There are no restrictions on the number of rotations in any direction.

CONTROL PRIORITY SYSTEM (NON-PROPORTIONAL SYSTEMS) - As a built in safety feature, the operator can perform only one major and one minor function at any one time. Major functions include rotation, winching up of a load, and elevating, extending, and retracting the boom. Minor functions include winching down and lowering the boom.

a. "WINCH UP" has priority over "BOOM UP", "BOOM OUT", "BOOM IN", and "ROTATION."

b. "BOOM UP" has priority over "BOOM OUT", "BOOM IN", and "ROTATION."

c. "BOOM OUT" and "BOOM IN" have priority over "ROTATION."

d. "BOOM DOWN" and "WINCH DOWN" can be operated with any function.

- ▲ **TRIGGER (ET12KXP Only)** - Varies the flow rate delivered to the crane valve. The farther the trigger is pulled, the faster the selected crane function operates.

OVERLOAD SENSING SYSTEM

This crane is equipped with an Overload Sensing System. If the capacity of the crane is exceeded, the "Winch Up", "Boom Down", and "Boom Out" functions will be shut down. The "Winch Down", "Boom Up", and "Boom In" functions will continue to operate and can be used to relieve the overload condition. The "Rotation" function also will continue to operate.

TWO-BLOCK SENSING SYSTEM

This crane is equipped with an anti two-block device that is mounted at the tip of the boom. If the load block / overhaul weight contacts the device the "Winch Up", "Boom Down", and "Boom Out" functions are disabled. The "Winch Down",

- ▲ "Boom Up", and "Boom In" functions will continue to operate and can be used to relieve the two-block condition.

CRANE OPERATION

Avoid rapid reversal of the winch and rotation control switches. The high inrush current to the motors during reversal can reduce the life of the contactors, motor brushes, and commutators.

When operating "WINCH UP", "BOOM DOWN", or "BOOM OUT," always maintain clearance between the boom head and the load block or hook.

Do not lift or drag a load sideways using any of the crane functions. The boom has much lower bending strength sideways than in a vertical direction.



VENCO VENTURO INDUSTRIES LLC
CINCINNATI, OHIO

TITLE

INSTALLATION DWG

DATE

03-08-19H

SECTION

C200

ET6/8/12 SERIES CRANES

SUPERSEDES

07-30-18G

900530B

CRANE OPERATION AND MAINTENANCE INSTRUCTIONS

OVERLOAD ALARM SYSTEMS (OPTIONAL)

This crane may be equipped with an optional overload alarm system.

1. Overload alarm horn sounds if rated load is exceeded at any reach.
2. If alarm sounds, RAISE boom or LOWER winch to remove overload.
3. Always RAISE boom slightly before lifting load - warning system INOPERATIVE when cylinder is completely bottomed.
4. Alarm can be tested by raising boom against up limit stop.

MANUAL TELESCOPIC BOOM

The 6' -14' and 7' - 15' booms have a 4' manual telescoping section in addition to the 4' power extension. A toggle pin locks the boom into either the extended or retracted position.

TRUCK SETUP & STABILIZERS

1. The truck should be parked on firm level ground when using the crane.
2. The center of the crane should be positioned close enough to the job so that it can be operated at a reach that puts the load within the rated capacity of the crane.
3. Set the vehicle parking brake and put the vehicle transmission in "park" (automatic transmission) or low gear (manual transmission), unless the engine is to be left running.
4. Deploy the stabilizers to stabilize the vehicle against rocking or overturning when lifting with the crane.

PREPARATION FOR TRAVEL

1. Return the stabilizers to the stowed position. Install and secure all pins.
2. Stow the crane boom in the boom support.
3. Hook the winch line to a tie down point on the body or pedestal and apply tension.
4. TURN OFF MASTER DISCONNECT SWITCH.
5. Unplug the control pendant and store in a body compartment or the cab.



WARNING

- The pendant (or receiver) plug must be unplugged from the crane socket and the Master Disconnect Switch (power) turned "OFF" when the crane is not in use! Leaving the pendant (or receiver) connected and power on when not in use may result in dangerous, unintentional activation of the crane functions.



MANUFACTURING, INC.
CINCINNATI, OHIO

TITLE
INSTALLATION DWG
ET6/8/10/12 SERIES

DATE
03-08-19F
SUPERSEDES
12-26-13E

SECTION
C200
900530C

WIRE ROPE INSTALLATION

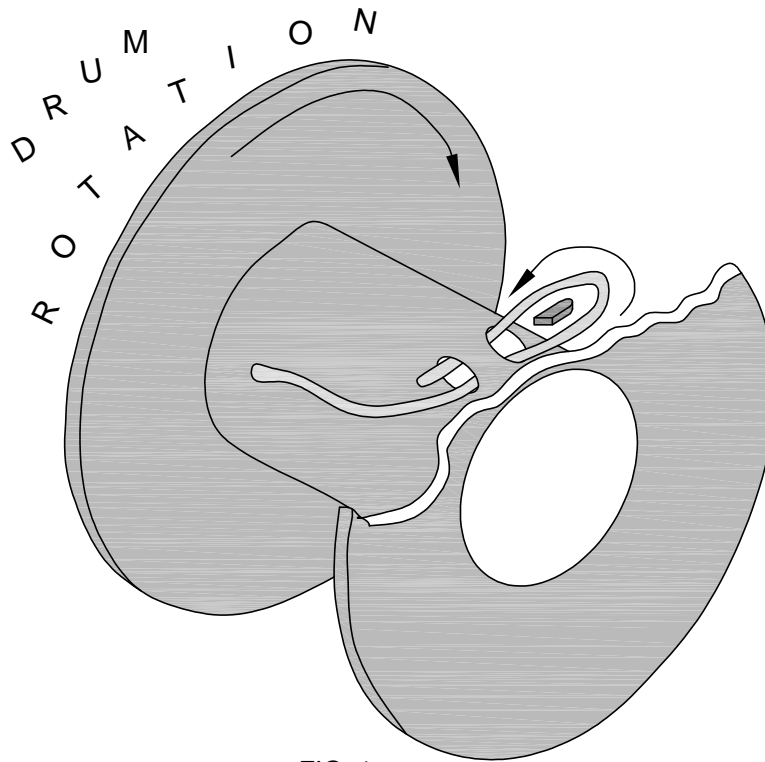


FIG. 1

- STEP 1: UNWIND COIL OF WIRE ROPE BY 'ROLLING' ALONG THE FLOOR. THIS WILL PREVENT 'KINKING'.
- STEP 2: INSERT WIRE ROPE END UP THROUGH ANTI-2-BLOCK (A2B) CAGE ASSEMBLY, BETWEEN CHEEK PLATES, OVER THE TOP SHEAVE, AND THROUGH WIRE ROPE GUIDE.
- STEP 3: INSERT WIRE ROPE END INTO POCKET OPENING ON WINCH, WRAP AROUND WEDGE, AND BACK THROUGH POCKET OPENING AS SHOWN IN FIGURE 1.



CAUTION

- IF THE WIRE ROPE IS NOT INSTALLED FOR THE CORRECT DRUM ROTATION, THE WINCH BRAKE VALVE WILL NOT HOLD THE LOAD.



CAUTION

- THERE MUST ALWAYS BE AT LEAST [5] DEAD WRAPS OF WIRE ROPE ON THE WINCH DRUM WHILE UNDER LOAD.

NOTE: SOME WINCHES MAY BE SUPPLIED WITH A HEX NUT IN LIEU OF A WEDGE FOR INSTALLING THE WIRE ROPE.



VENCO VENTURO INDUSTRIES LLC
CINCINNATI, OHIO

TITLE

WIRE ROPE INSTALLTN

DATE

02-21-14K

SECTION

C200

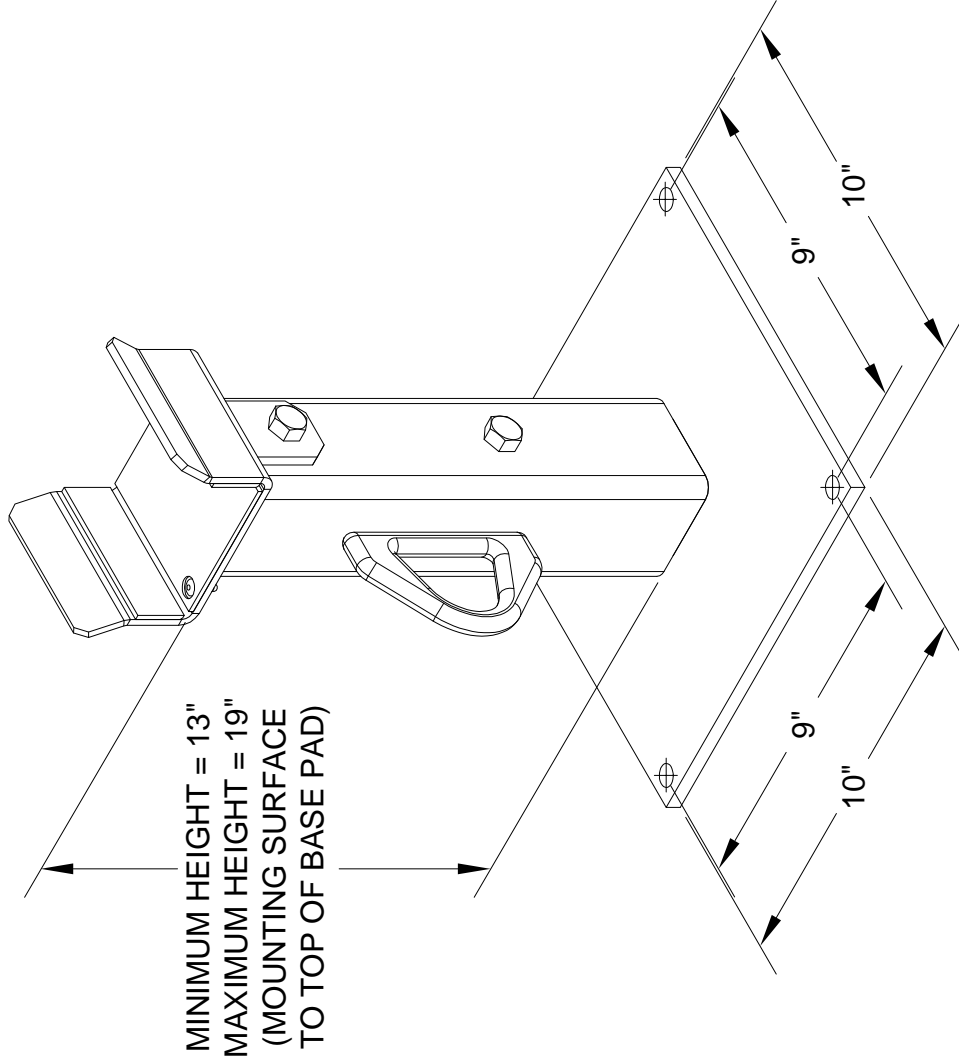
ET6K & LARGER CRANES

SUPERSEDES

12-26-13J

22245

21440 ADJUSTABLE BOOM REST



VENCO VENTURO INDUSTRIES LLC
CINCINNATI, OHIO

TITLE
21440 ADJUSTABLE BOOM REST

DATE
03-08-19B

SECTION
C200

ET6/8/12 SERIES CRANES

SUPERSEDES
12-26-13A

20872

SECTION 300

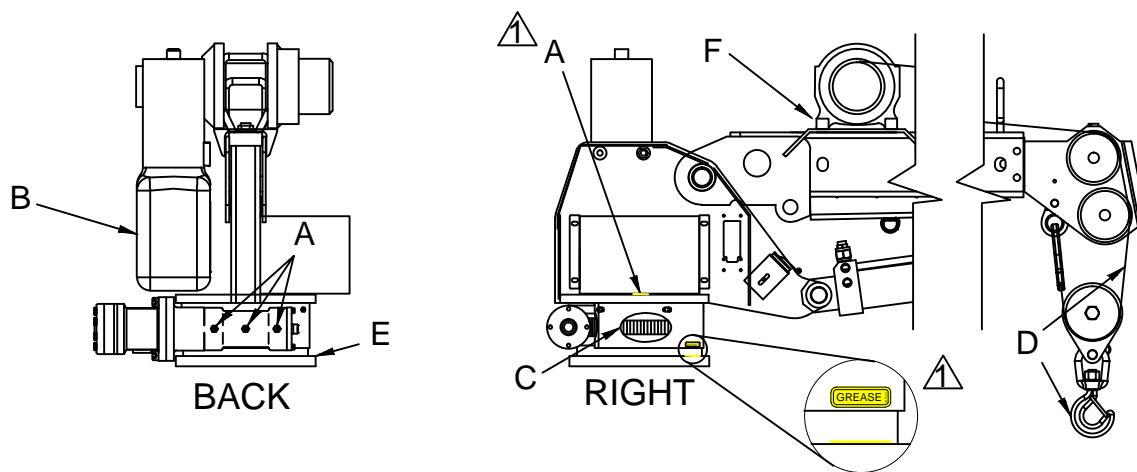
MAINTENANCE

&

SERVICE



VENCO VENTURO INDUSTRIES LLC
CINCINNATI, OHIO



ATTENTION:

NEVER WASH THIS CRANE WITH CHEMICAL PRODUCTS OR HIGH PRESSURE WATER JETS, AS THEY CAN CAUSE DETACHMENT OF DECALS OR ENTRANCE OF WATER INTO ELECTRICAL OR SLEWING RING COMPONENTS

Location	Service Required	Note		Service Interval
A	Grease fitting With Pressure Grease Gun	Use FUCHS Renolit Aluminum Complex Grease, or equivalent ⚠️ ALIGNMENT: To align hole w/ fitting, line up grease decals on lower cover and baseplate.		Time of Truck Service
B	Fill Oil Reservoir to Oil Level with Boom Down and Boom In.	Use Dextron ATF for Ambient Temperatures Between -22° F and 30° F	Use ISO Viscosity Grade 68 or Equivalent for Ambient Temperatures Between 10°F and 125°F	Time of Truck Service and as required by changes in the ambient temperature range
C	Lubricate Gear Teeth	Remove Cover & Use Chassis Grease		Time of Truck Service
D	Check Wire Rope and Hook	Rope should be free of kinks and fraying		Time of Truck Service
E	Check Torque of Base Mounting Bolts	Rectangular base: torqued to 455 ft-lbs		Time of Truck Service
F	Check Torque of Winch Mounting Bolts	Bolts should be torqued to 32 ft-lbs		Time of Truck Service



VENCO VENTURO INDUSTRIES LLC
CINCINNATI, OHIO

TITLE

LUBRICATION & MAINTENACE CHART

ET6K W/ RECTANGULAR BASE

DATE

05-26-23

SUPERSEDES

-

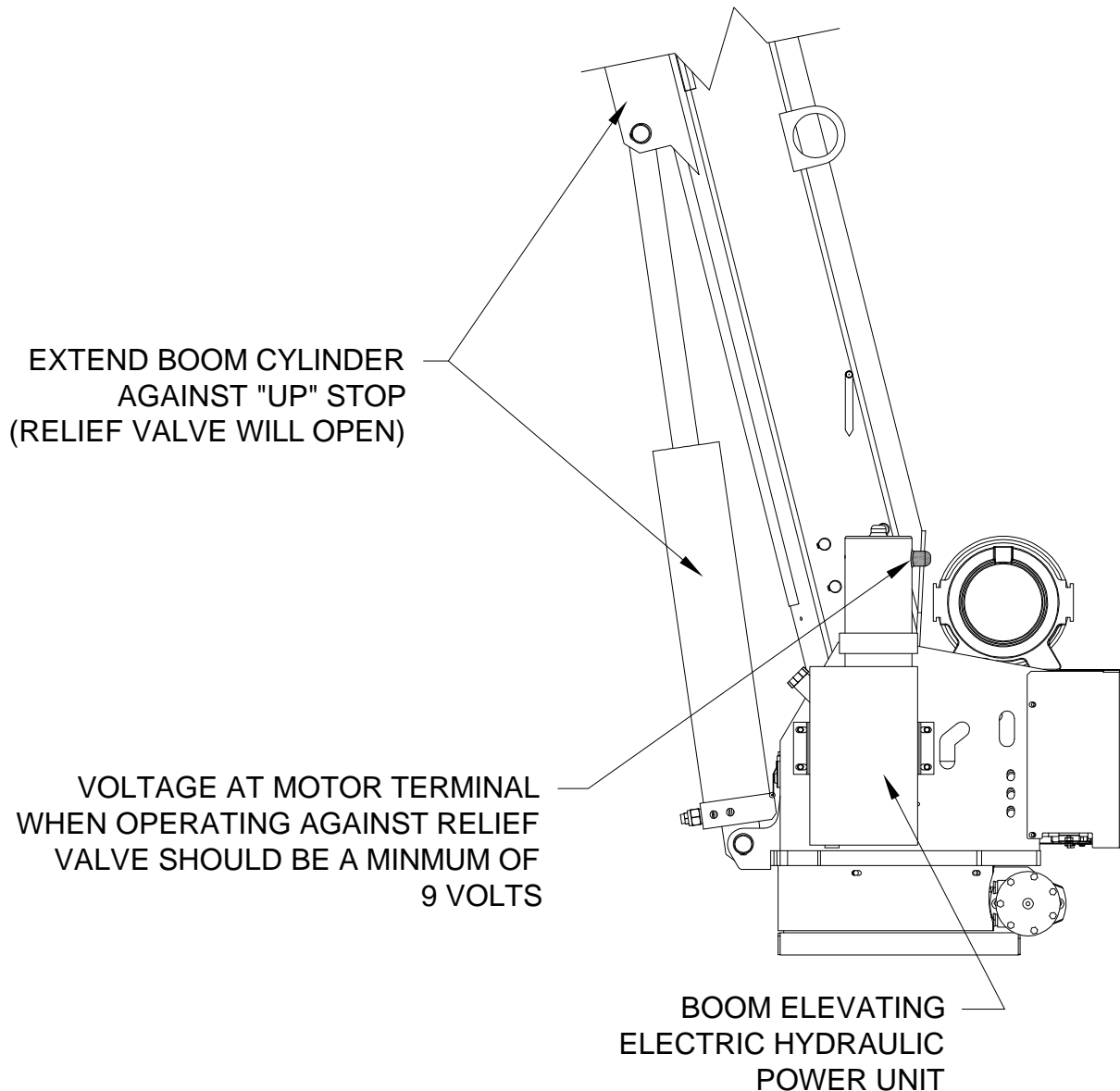
SECTION

C300

26021

MINIMUM VOLTAGE TEST

ONE OF THE MOST COMMON ELECTRICAL PROBLEMS ENCOUNTERED ON 12 VOLT ELECTRICAL CRANES IS INSUFFICIENT VOLTAGE AT THE MOTOR WHEN DRAWING THE LARGE CURRENT THAT EXISTS AT FULL LOAD



MANUFACTURING, INC.
CINCINNATI, OHIO

TITLE
MINIMUM VOLTAGE TEST
ET SERIES CRANES

DATE
12-26-13G
SUPERSEDES
10-05-09F

SECTION
C300
19963

WIRE ROPE ASSEMBLY

ET6K WIRE ROPE:

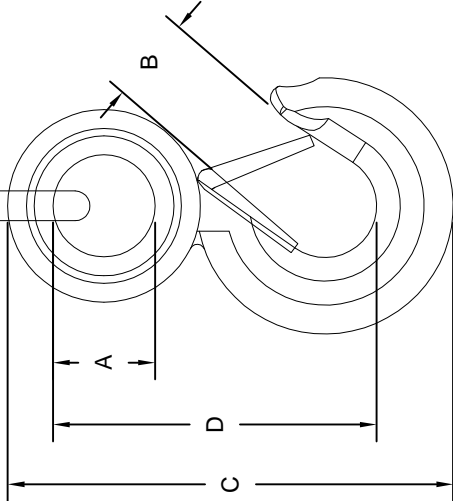
3/16" DIA, 50' LONG

GAC 7X19 LHRL-IWRC, SB 4200 LBS

▲ ET8/12 SERIES WIRE ROPE:

1/4" DIA, 65' LONG

GAC 7X19 IPS-LHRL-IWRC, SB 7000 LBS



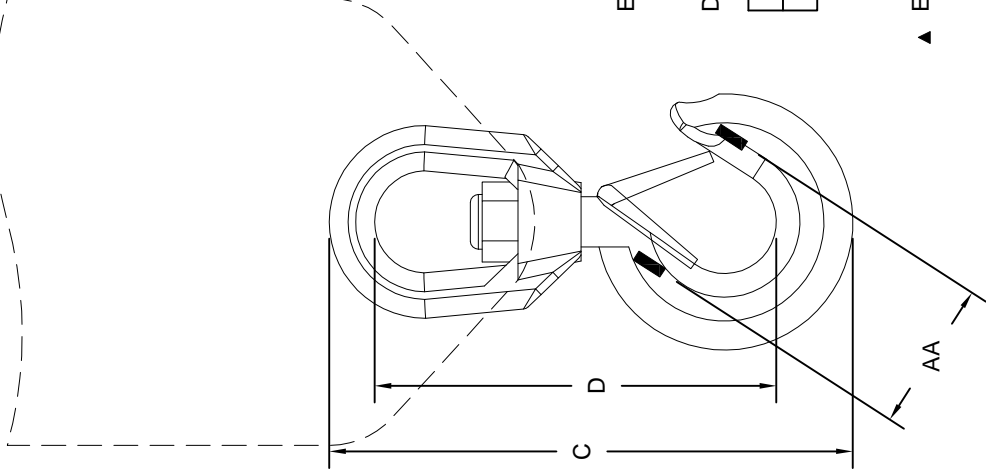
WIRE ROPE HOOK:

RATING: 1 TONNE (2205 LBS)

DIMENSIONS:

A	B	C	D
0.88"	1.06"	4.88"	3.63"

LOAD BLOCK ASSEMBLY



ET6K LOAD BLOCK HOOK:

RATING: 1.5 TONNE (3307 LBS)

DIMENSIONS:

COLOR	BRAND	AA	C	D
GOLD	CROSBY	2.00"	7.75"	6.12"

▲ ET8/12 SERIES LOAD BLOCK HOOK:

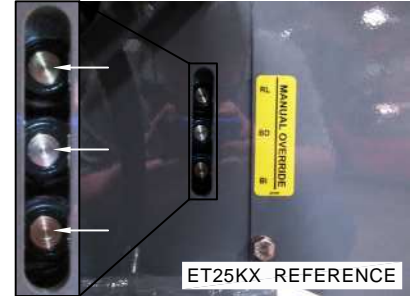
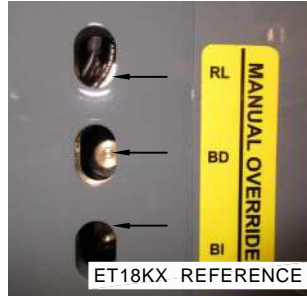
RATING: 2 TONNE (4410 LBS)

DIMENSIONS:

COLOR	BRAND	AA	C	D
GOLD	CROSBY	2.00"	8.25"	6.50"

MANUAL OVERRIDE INSTRUCTIONS
ET NON-PROPORTIONAL SERIES CRANES ▲

!! READ ALL INSTRUCTIONS BEFORE PERFORMING MANUAL OVERRIDE PROCEDURES !!



Each valve station incorporates [2] hydraulic ports and [2] coils. Manual override shafts are located in the center of the coils (see figure 1). Manual override decals are placed on each crane near the valve assembly. These decals provide a visual aid that helps the operator determine the function designations (Reference figure 2).

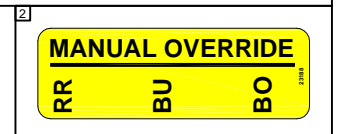
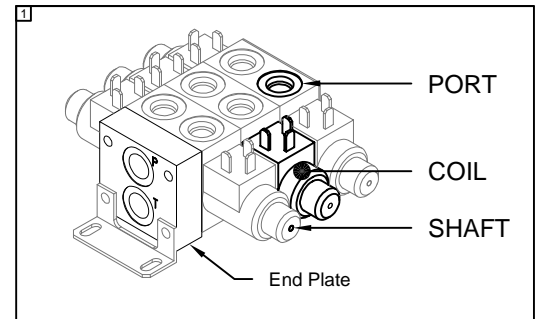
2-STATION FUNCTIONS:

RR = Rot. Right RL = Rot. Left
BU = Boom Up BD = Boom Down

3-STATION FUNCTIONS include previous functions, plus:

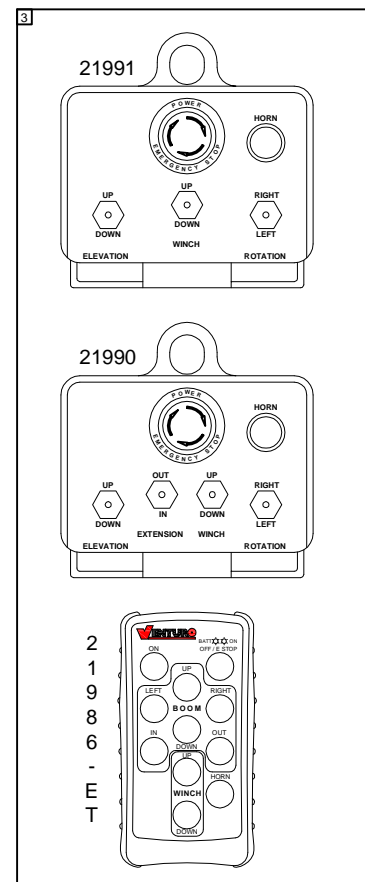
BI = Boom In BO = Boom Out

ALWAYS BE SURE TO CHECK HYDRAULIC OIL LEVEL BEFORE PROCEEDING. IT IS RECOMMENDED TO REMOVE ANY ITEM(S) THAT MAY INTERFERE WITH OPERATING THE CRANE MANUALLY. IF POSSIBLE, STRAPS AND/OR HARNESSES SHOULD BE REMOVED BEFORE OPERATING A CRANE IN MANUAL OVERRIDE !!



Procedure:

1. Turn Master disconnect switch to "ON"
2. Power up the pendant / radio
 - 2.1. PENDANT - twist EMERGENCY STOP button clockwise
 - 2.2. RADIO - Press green ON button
3. On the crane, reference the function you wish to perform using the manual override decal
4. Using a tool with a diameter of 1/8" or smaller, press the shaft inward and hold
5. Reference the functions listed on your pendant or radio (see figure 3)
6. Press the switch or button for the same function
7. If you need to change function,
 - 7.1. Release switch or button
 - 7.2. Remove tool from shaft
 - 7.3. Go to step 3



For assistance, please feel free to contact Technical Support at 800-226-2238.



VENCO VENTURO INDUSTRIES LLC
CINCINNATI, OHIO

TITLE
MAN. OVERRIDE INSTR.
ET NON-PROP CRANES

DATE
03-08-19A
SUPERSEDES
02-09-17

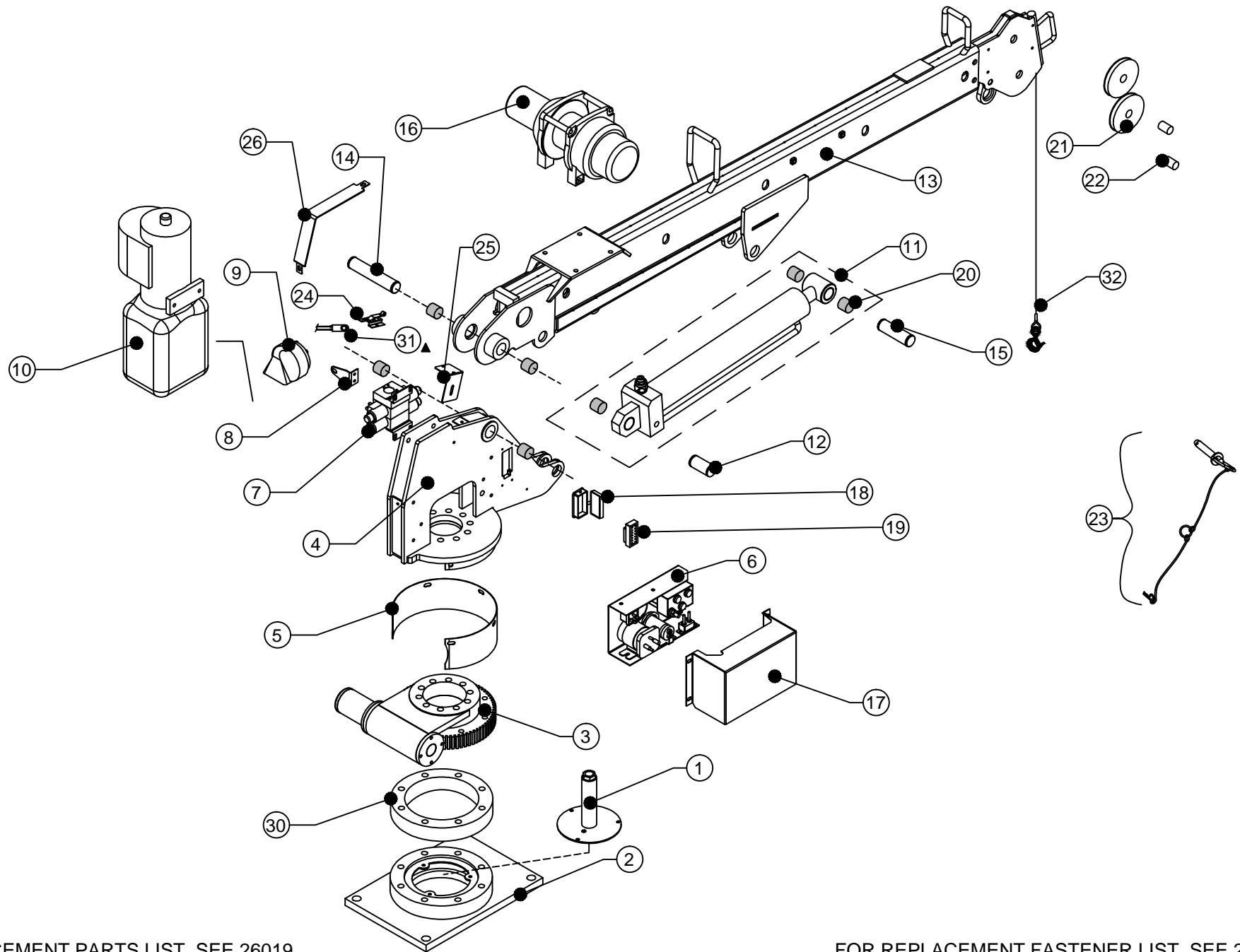
SECTION
C200
23084

SECTION 400

REPLACEMENT PARTS



VENCO VENTURO INDUSTRIES LLC
CINCINNATI, OHIO



FOR REPLACEMENT PARTS LIST, SEE 26019

FOR REPLACEMENT FASTENER LIST, SEE 26004



VENCO VENTURO INDUSTRIES LLC
CINCINNATI, OHIO

TITLE
REPLACEMENT PARTS DRAWING
ET6K

DATE
05-26-23
SUPERSEDES
-

SECTION
C400
26018

REPLACEMENT PARTS LIST - ET6K

32	1	15810-3/16-50	WIRE ROPE ASSY. 3/16 GALV. AIRCRAFT
31	1	19918	SWITCH, TOP POSITION
30*	1	27217	SPACER RING
29*	1	25995	HOSE & FITTING KIT
28*	1	21666	WIRING KIT,
27*	1	26839	FIELD SERVICE LABEL KIT, ET6K
26	1	27433	COVER; MECHANISM
25	1	20497	SWITCH BRACKET; TOP POSITION
24	1	19917	BOOM SHUT-OFF SWITCH BRACKET
23	1	23042-F-34-34	HITCH PIN ASSY; BOOM LOCK
22	2	13168-2	SLEEVE
21	2	19646	SHEAVE WITH BUSHING
20	7	21789	COMPOSITE BEARING; ELEVATION / PRIMARY PIVOTS, AND MECHANISM
19	1	22482	PLUG; FEMALE INSERT, 16 PIN + 1 POLE
18	1	22481	SOCKET CASE W/ HOOD; 22482 PLUG
17	1	27435	SIDE COVER
16	1	20586	WINCH; DC1200
15	1	27444	PIVOT PIN, ELEV. CYL, ROD PIVOT
14	1	27443	PIVOT PIN, PRIMARY BOOM PIVOT
13	1	25997	BOOM, FINAL ASSY., ET6K
12	1	21546	PIVOT PIN, ELEVATION CYLINDER, BASE PIVOT
11	1	21788	ELEVATION CYLINDER W/ COMPOSITE BEARINGS
10	1	20456	HYD PWR UNIT.
9	1	21948	HORN
8	1	22000	BRACKET; HORN
7	1	21615	4-2 VALVE BLOCK
6	1	21515	ELECTRICAL COMPONENT PANEL
5	1	27519	COVER; SLEWING RING
4	1	25998	WELDED ASSY; MECHANISM
3	1	27243	SLEW DRIVE ASSY; 7" W/ HD HYD MOTOR (50RA) & MNTNG BASE
2	1	26017	WELDED ASSY; MOUNTING BASE (RECTANGULAR)
1	1	21506	CANDLESTICK ASSY; SWIVEL PIGTAIL
ITEM NO	QTY	PART NO	DESCRIPTION

* NOT SHOWN

FOR REPLACEMENT PARTS DRAWING SEE 26018



VENCO VENTURO INDUSTRIES LLC
CINCINNATI, OHIO

TITLE
RPLCMNT PARTS LIST

ET6K

DATE
05-26-23

SUPERSEDES
-

SECTION
C400

26019

FASTENER LIST FOR ET6K

PART NO.	DESCRIPTION	QTY	LOCATION / FUNCTION
!HHCS03118063	HEX HEAD CAP SCREW; 5/16-18 x 5/8", PLATED	1	GROUND STRAP ON CANDLESTICK
!LWSH-031	LOCK WASHER; 5/16"	1	GROUND STRAP ON CANDLESTICK
!LWSH-031-STAR	LOCK WSHER; 5/16", EXTERNAL STAR	1	GROUND STRAP ON CANDLESTICK
!HHCS02520063-F	HEX HEAD CAP SCREW; 1/4-20 x 5/8", SELF-TAP	3	CANDLESTICK TO BASE
!LWSH-025-STAR	LOCK WASHER; 1/4", EXTERNAL STAR	6	CANDLESTICK TO BASE
!ZERK-01327BPT	GREASE FITTING	3	SLEWING RING
!12534-4	MACHINERY BUSHING; 1/2 I.D., 7/8 O.D., 14GA, PLATED	8	MOUNTING BASE TO SLEW DRIVE
!SHCS05013275	SOCKET HEAD CAP SCREW; 1/2-13 X 2-3/4", BLACK OXIDE	8	MOUNTING BASE TO SLEW DRIVE
!SHCS05013250	SOCKET HEAD CAP SCREW; 1/2-13 x 2 1/2" LG, GR. 5, PLATED	10	MECHANISM TO SLEW DRIVE
!LWSH-050-HC	LOCK WASHER; HI-COLLAR, 1/2, PLATED	10	MECHANISM TO SLEW DRIVE
!HHCS03816100	HEX HEAD CAP SCREW; 3/8-16 x 1" LG, GR. 5, PLATED	2	HYDRAULIC POWER UNIT TO MECHANISM
!LWSH-038	LOCK WASHER; 3/8"	2	HYDRAULIC POWER UNIT TO MECHANISM
!HHCS02520075	HEX HEAD CAP SCREW; 1/4-20 x 3/4", PLATED	4	4-2 VALVE BLOCK TO MECHANISM
!LWSH-025	LOCK WASHER; 1/4"	4	4-2 VALVE BLOCK TO MECHANISM
!FWSH-025	FLAT WASHER; 1/4"	4	4-2 VALVE BLOCK TO MECHANISM
!HHCS#1024125	HEX HEAD CAP SCREW; #10-24 x 1 1/4", PLATED	2	TOP ANGLE SWITCH
!LWSH-#10	LOCK WASHER; #10	2	TOP ANGLE SWITCH
!HNUT-#1024	HEX NUT; #10-24	2	TOP ANGLE SWITCH
!HHCS02520063	HEX HEAD CAP SCREW; 1/4-20 x 5/8", PLATED	1	TOP ANGLE SWITCH BRACKET - MECHANISM
!FWSH-025	FLAT WASHER; 1/4"	1	TOP ANGLE SWITCH BRACKET - MECHANISM
!LWSH-025	LOCK WASHER; 1/4"	1	TOP ANGLE SWITCH BRACKET - MECHANISM
!UNUT-02520	U-NUT; 1/4-20	5	COVER; ROTATION
!HHCS02520063	HEX HEAD CAP SCREW; 1/4-20 x 5/8", PLATED	5	COVER; ROTATION
!FWSH-025	FLAT WASHER; 1/4"	5	COVER; ROTATION
!LWSH-025	LOCK WASHER; 1/4"	5	COVER; ROTATION
!HHCS02520063	HEX HEAD CAP SCREW; 1/4-20 x 5/8", PLATED	2	ACCESS PANEL - MECHANISM
!FWSH-025	FLAT WASHER; 1/4"	2	ACCESS PANEL - MECHANISM
!SHCS#1024038	SOCKET HEAD CAP SCREW; #10-24 x 3/8", PLATED	2	HORN BRACKET - MECHANISM
!LWSH-#10	LOCK WASHER; #10	2	HORN BRACKET - MECHANISM
!SHCS#1024038	SOCKET HEAD CAP SCREW; #10-24 x 3/8", PLATED	1	CABLE CLAMP - MECHANISM
!LWSH-#10	LOCK WASHER; #10	1	CABLE CLAMP - MECHANISM
!PHCS#0832050	PAN HEAD CAP SCREW; #08-32 x 1/2", PLATED	4	PENDANT PLUG CASE
!LWSH-#08	LOCK WASHER; #08	4	PENDANT PLUG CASE
!HHCS03816100	HEX HEAD CAP SCREW; 3/8-16 x 1" LG, GR. 5, PLATED	4	WINCH TO MOUNTING PLATE
!FWSH-038	FLAT WASHER; 3/8"	4	WINCH TO MOUNTING PLATE
!LWSH-038	LOCK WASHER; 3/8"	4	WINCH TO MOUNTING PLATE
!HNUT-038	HEX NUT; 3/8	4	WINCH TO MOUNTING PLATE
!SHCS03118075	SOCKET HEAD CAP SCREW; 5/16-18 x 3/4" LG, PLATED	4	SIDE COVER - MECHANISM
!LWSH-031	LOCK WASHER; 5/16"	4	SIDE COVER - MECHANISM
!HHCS06311175	HEX HEAD CAP SCREW; 5/8-11 x 1 3/4" LG, PLATED	2	SHEAVE AXLE
!JNUT-06311N	JAM NUT; 5/8-11	2	SHEAVE AXLE
!HHCS02520063-F	HEX HEAD CAP SCREW; 1/4-20 x 5/8", SELF-TAP	3	ELECTRICAL COMPONENT PANEL TO MECHANISM
!LWSH-025-STAR	LOCK WASHER; 1/4", EXTERNAL STAR	3	ELECTRICAL COMPONENT PANEL TO MECHANISM
!HHCS02520063	HEX HEAD CAP SCREW; 1/4-20 x 5/8", PLATED	2	MECHANISM COVER TO MECHANISM
!LWSH-025	LOCK WASHER; 1/4"	2	MECHANISM COVER TO MECHANISM
!SRNG-113	SNAP RING; 1-1/8", PLATED	6	ALL PIVOT PINS

FOR REPLACEMENT PARTS DRAWING SEE 26003



VENCO VENTURO INDUSTRIES LLC
CINCINNATI, OHIO

TITLE
REPLCMNT FASTENERS

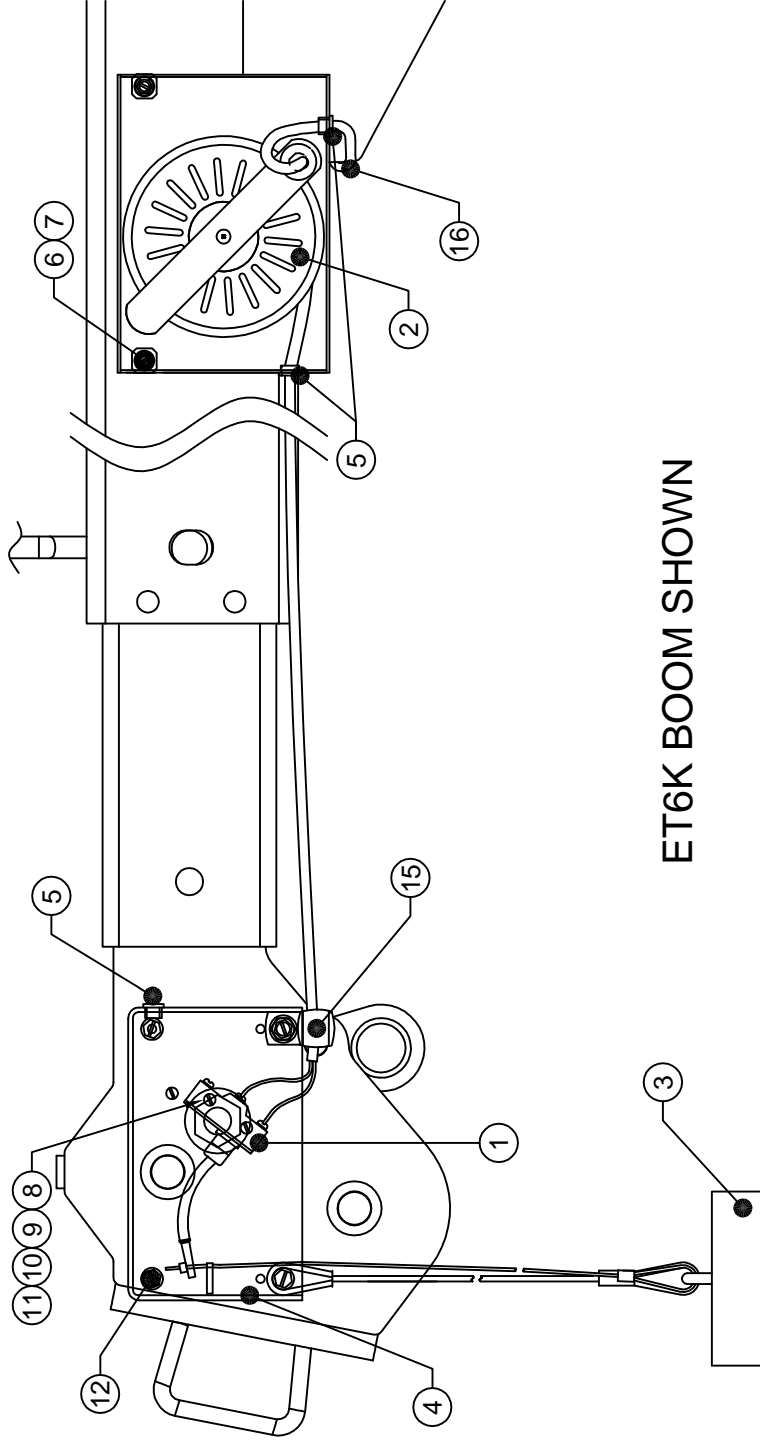
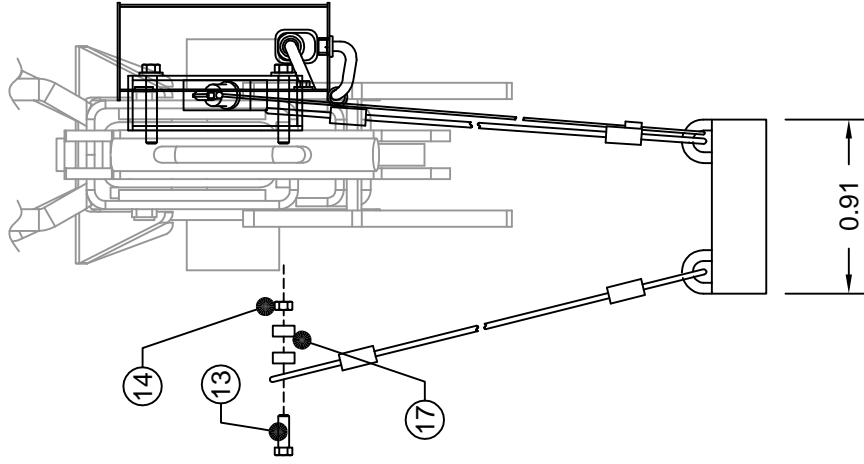
ET6K

DATE
11-05-20B

SUPERSEDES
11-15-17A

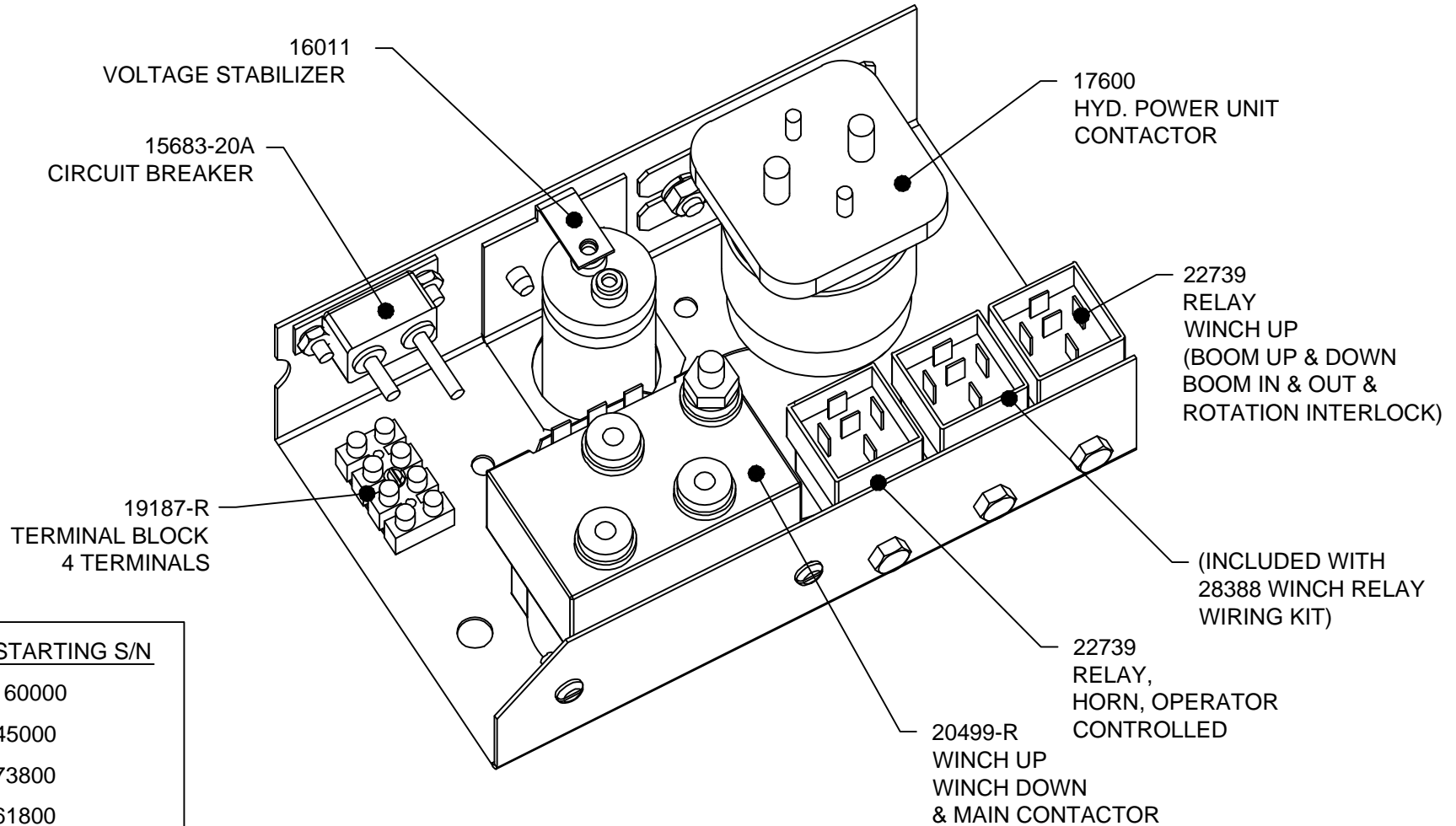
SECTION
C400

26004



ITEM	QTY	PART NO	DESCRIPTION
17	4	22490	SPACER; BOOM ARROW (2 PER SIDE)
16	1	21679	WIRE HARNESS; A2B CORD REEL
15	1	19269	CABLE CLAMP; SMALL
14	1	!HNUT-02520	HEX NUT; 1/4-20
13	1	!HHCS02520075-5	HEX HEAD CAP SCREW; 1/4-20 x 3/4, GR. 5
12	4	!HHCS02520175	HEX HEAD CAP SCREW; 1/4-20 x 1 3/4, GR. 5
11	2	!LWSH-#06	LOCK WASHER; #6
10	2	!FWSH-#06	FLAT WASHER; #6
9	2	!HNUT-#0632	HEX NUT; #6-32
8	2	!PHMS#0632125	PAN HEAD MACHINE SCREW; #6-32 x 1 1/4", GR. 5
7	4	!LWSH-031	LOCK WASHER; 5/16
6	4	!SHCS03118050-5	SOCKET HEAD CAP SCREW; 5/16-18 x 1/2", GR. 5
5	3	19270	SNAP BUSHING; 9/16" I.D.
4	1	21291	ANTI-TWO-BLOCK (A2B) HOUSING
3	1	19377-1	ASSY; WEIGHT, A2B
2	1	22683	ASSY; CORD REEL, LEFT
1	1	19376	SWITCH; A2B

21515 ELECTRICAL COMPONENT ASSEMBLY



MODEL	STARTING S/N
ET6K	160000
ET8K	45000
ET8KX	73800
ET12K	61800
ET12KX	69800
ET12KXP	25C000001

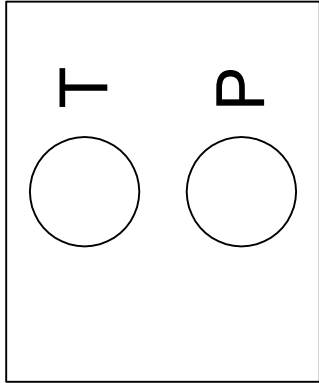


VENCO VENTURO INDUSTRIES LLC
CINCINNATI, OHIO

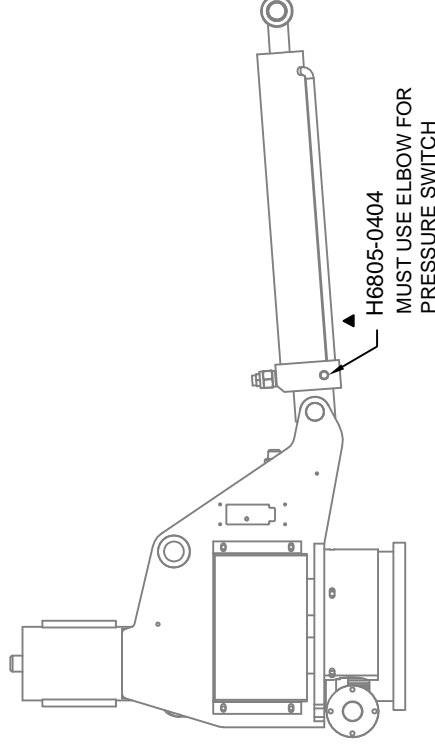
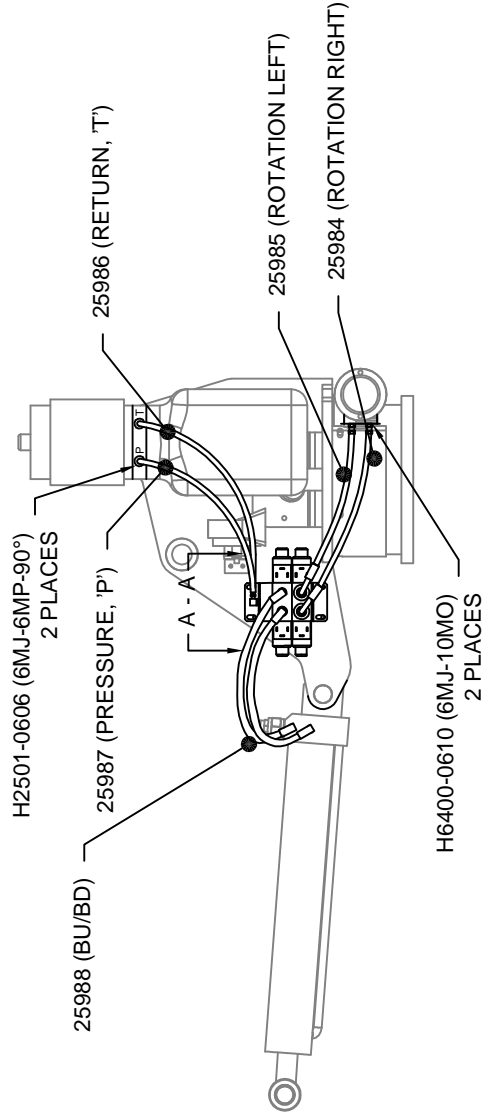
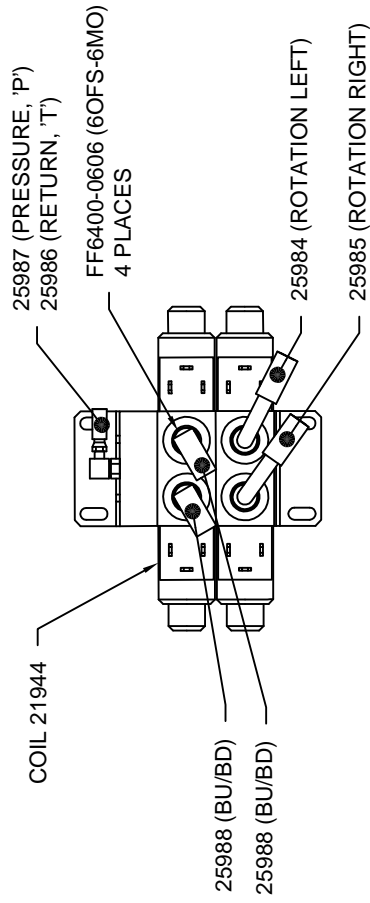
TITLE
ELECTRICAL COMPONENT ASSEMBLY
ET6K, ET8/12K(X), ET12KXP

DATE
03-02-23G
SUPERSEDES
07-31-18F

SECTION
C400
21600



SECTION A - A
NOT TO SCALE



VENCO VENTURO INDUSTRIES LLC
CINCINNATI, OHIO

TITLE
REPLACEMENT PARTS DRAWING

ET6K HYD COMPONENTS

DATE

12-16-16C

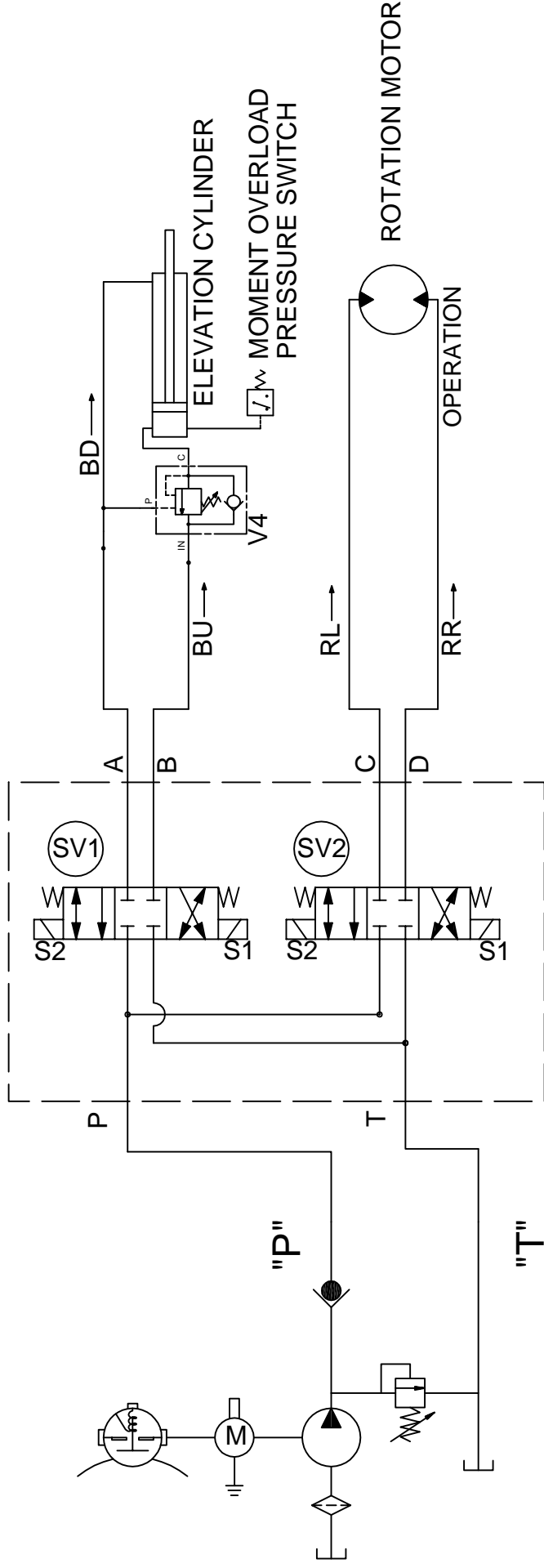
SUPERSEDES

03-19-15B

SECTION

C400

26007



SCHEMATIC

(SV1)

ENERGIZE "S2"
OPEN FLOW
'P' TO 'A'
'B' TO 'T'
ENERGIZE "S1"
OPEN FLOW
'P' TO 'C'
'D' TO 'T'

(SV2)

ENERGIZE "S2"
OPEN FLOW
'P' TO 'C'
'D' TO 'T'
ENERGIZE "S1"
OPEN FLOW
'P' TO 'D'
'C' TO 'T'

 <p>VENCO VENTURO INDUSTRIES LLC CINCINNATI, OHIO</p>	TITLE		DATE	SECTION
	HYDRAULIC SYSTEM DIAGRAM		01-26-15	C400
ET6K	SUPERSEDES		-	26008

Single & 2-Pole Slip-ring Replacement Parts (1 of 2)

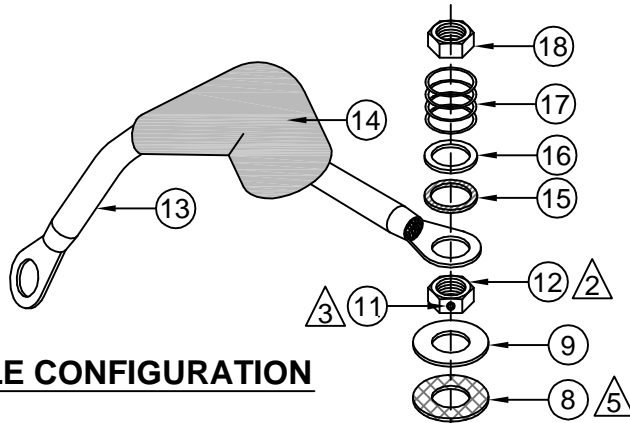
						16780 BILLS OF MATERIALS		
Quill Rotation	Slew Rotation Single Pole Slip-Ring	Slew Rotation 2-Pole Slip-Ring (ET6K ONLY)	Slew Rotation 2-Pole Slip-Ring (ET8-18KX)	Slew Rotation 2-Pole Slip-Ring (ET25-36KX)	ALL CRANES			
16780	16780 - 1	16780 - 2P6	16780 - 2P8	16780 - 2P25	16780 - KIT			
QTY						#	PART	DESCRIPTION
1	1	1	1	1	-	1	16783	PIGTAIL AND STUD ASSEMBLY
1	1	1	1	1	1	2	12534-5	ZINC BUSHING; 5/8" I.D. X 1" O.D. X 14 GAUGE
2	2	2	2	2	2	3	14357-1	FIBER WASHER; 5/8" I.D. X 1 1/16" O.D. X 1/16"
1	1	1	1	1	1	4	14233	INSULATING BUSHING; 5/8" I.D. X 7/8" O.D. X 7/8"
1	-	-	-	-	-	5	14318	FLAT WASHER; 1 3/16" I.D. X 2 3/4" O.D. X 3/16"
1	-	-	-	-	-	6	14232	INVERTED FLARE NUT; 1 3/16"-16
-	-	-	-	-	-	7	27568	WELDED ASSY. CANDLESTICK
1	1	1	1	1	1	8	14357-2	FIBER WASHER; 5/8" I.D. X 1 1/4" O.D. X 1/16"
1	1	1	1	1	1	9	IFWSH-063SAE	FLAT WASHER; 5/8" SAE
-	1	-	-	-	-	10	27156	RUBBER WATER SHIELD; 1/8" THICK
1	1	1	1	1	1	11	ISHCS02528025KC	SET SCREW W/ KNURLED CUP; 1/4"-28 X 1/4"
1	1	1	1	1	1	12	21273	BRASS JAM NUT; 5/8"-11
-	-	-	-	-	-	13	26035-2	PIGTAIL; SWIVEL TERMINAL
-	-	-	-	-	-	14	17012	RUBBER BOOT; SWIVEL TERMINAL
1	1	1	1	1	1	15	5612-162-62	TEFLON WASHER
1	1	1	1	1	1	16	5714-113-62	BRASS WASHER
1	1	1	1	1	1	17	LC-098K-00	SPRING; 0.845" O.D. X 0.098" WIRE X 1.00 F.L.
1	1	1	1	1	1	18	!JNUT-06311N	JAM NUT; 5/8"-11, NYLON NUT
1	1	1	1	1	1	19	LOCTITE-24205	REMOVABLE THREAD LOCKER; 0.5ML
1	1	1	1	1	1	20	19368	IDWG; 16780 SWIVEL TERMINAL
-	-	1	-	-	-	21	27456	UHMW WATER SHIELD, (ET6K ONLY)
-	-	-	1	1	-	22	27456-1	UHMW WATER SHIELD, (ET8 - ET36)
-	-	1	1	1	-	23	27461	SPRING, (-) SLIP-RING ASSY.
-	-	-	1	1	-	24	27441-1	COPPER SLIP-RING, (ET8 - ET36)
-	-	1	-	-	-	25	27441	COPPER SLIP-RING, (ET6K ONLY)
-	-	1	1	1	-	26	27449-1	BRASS SLIP-RING (ET6 - ET36)
-	-	1	1	1	-	27	!HHCS03118075-B	BRASS HHCS
-	-	1	1	1	-	28	!HNUT-03118-B	BRASS NYLOC NUT
-	-	1	-	-	-	29	23255	SLIP-RING, WELDED ASSY, ET6K
-	-	-	1	-	-	30	23255-1	SLIP-RING, WELDED ASSY, ET8 - 18K(X)
-	-	-	-	1	-	31	23255-2	SLIP-RING, WELDED ASSY, ET25 - 36K(X)
-	-	1	1	1	-	32	02025-2*96.5INX	(-) WELDING CABLE ASSY, BRASS SLIP-RING
-	-	1	1	1	-	33	02025-2*22.5INX	(-) WELDING CABLE ASSY, COPPER SLIP-RING
-	-	1	1	1	-	34	27463	SHIM, WIDE RIM, 18GA, 2-1/4 O.D. X 1-1/2 I.D.
-	-	1	1	1	-	35	20889	RUBBER GROMMET
-	-	1	1	1	-	36	!SRNG-150	SNAP-RING, EXTERNAL, 1-1/2"



VENCO VENTURO INDUSTRIES LLC
CINCINNATI, OHIO

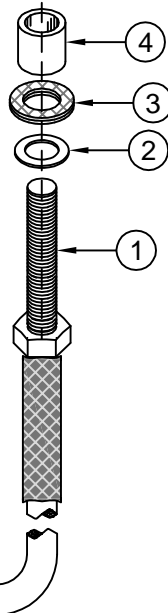
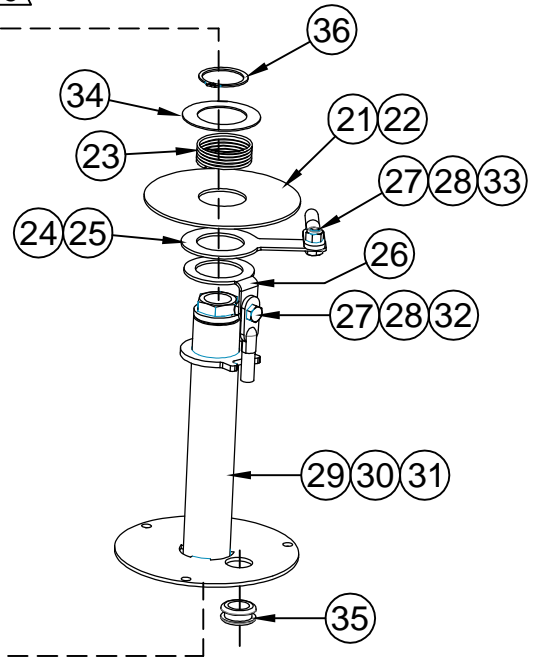
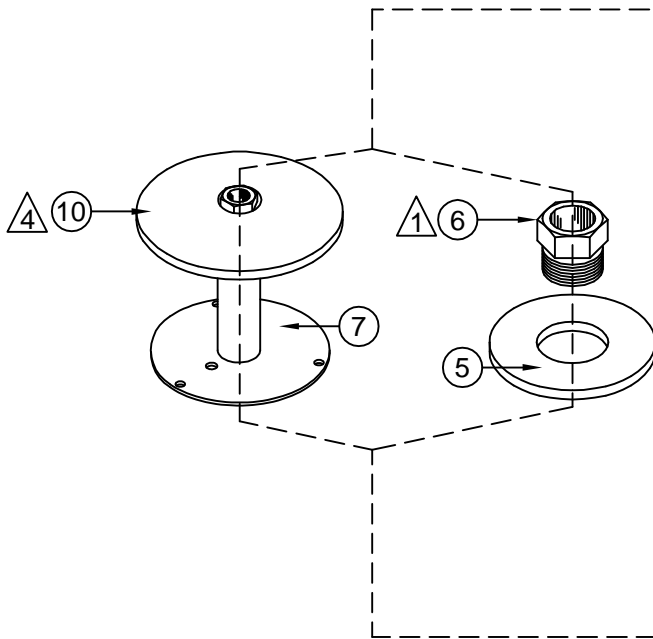
TITLE	DATE	SECTION
16780 REPLACEMENT PARTS	03-29-19A	C400
ET6/8/12/16/18/25/30/36K(X)	SUPERSEDES 04-27-18	21292

Single & 2-Pole Slip-ring Replacement Parts (2 of 2)



SINGLE-POLE CONFIGURATION

2-POLE CONFIGURATION



- 1 LOCTITE 242 BLUE
& TORQUE TO 30 FT-LBS
FOR QUILL APPLICATIONS
- 2 TORQUE TO 15 FT-LBS
- 3 LOCTITE 242 BLUE
- 4 STRETCH RUBBER WATER-SHED DISC
P/N 27156 AROUND **'OUTSIDE'** OF THE
INVERTED FLARE NUT OF
CANDLESTICK, AS SHOWN
- 5 ITEM #8, FIBER WASHER, 5/8 I.D.
'MUST' SIT DIRECTLY ON TOP OF THE
INVERTED FLARE NUT ITEM #6.

THE 16780 SWIVEL TERMINAL CAN
REPLACE & INTERCHANGE WITH
THE 14231 SWIVEL TERMINAL, FOR
ET20,000 & ET20K(X) CRANES.



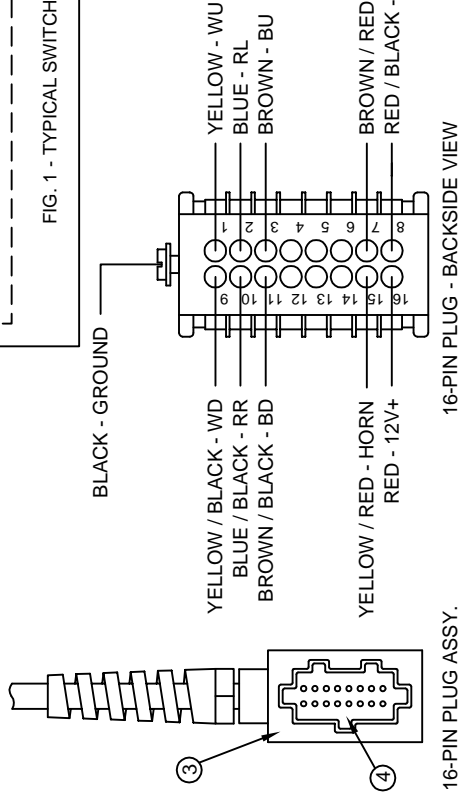
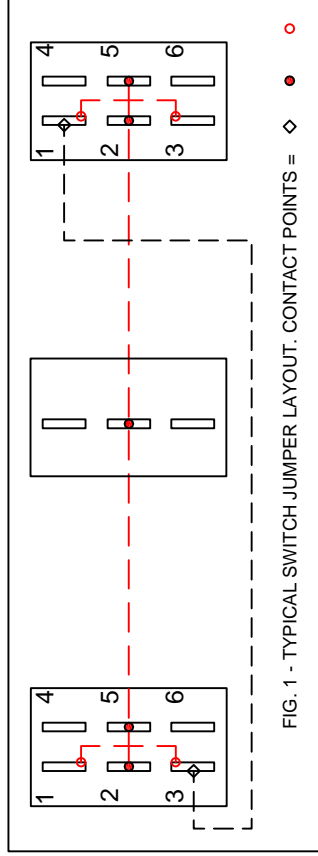
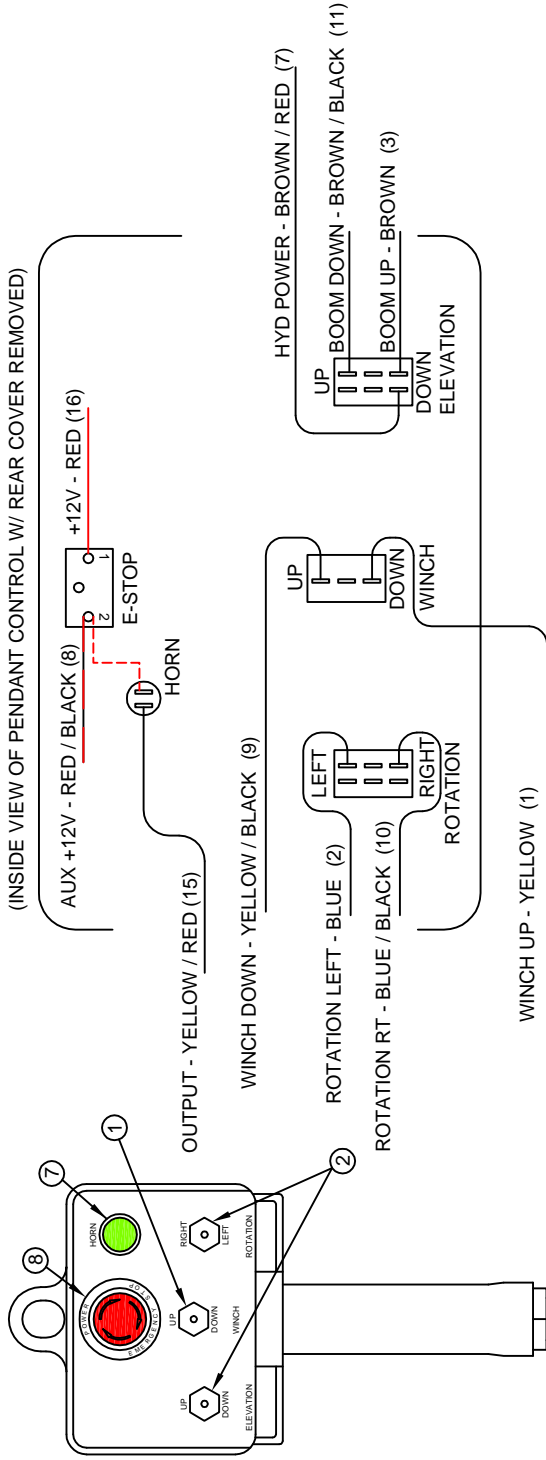
VENCO VENTURO INDUSTRIES LLC
CINCINNATI, OHIO

TITLE
REPL. PARTS ILLUSTRATION
ET6/8/12/16/18/25/30/36K(X)

DATE
04-27-18
SUPERSEDES
-

SECTION
C400
21293

21991 PENDANT; 3 FUNCTION ET CRANES, E-STOP / HORN



NOTE 1:
WIRE TERMINALS TO BE INSTALLED 'AFTER'
ROUTING REPLACEMENT CORD ASSY
THROUGH PENDANT HEAD AND PLUG
HOUSING.

NOTE 2:
STOW OR CUT BACK UNUSED WIRES.

MODEL	STARTING S/N
ET6K	160000
ET8K	45000
ET12K	61800

ITEM	QTY	PART NO.	DESCRIPTION
8	1	22156	SWITCH; E-STOP
7	1	22155	SWITCH; PUSHBUTTON, HORN
6	1	22135	KIT; REPLACEMENT CORD ASSY
5	-	-	-
4	1	22472	INSERT; MALE, 16 + 1 POLE
3	1	22471	PLUG CASE; 16 + 1 POLE
2	2	22152	SWITCH; DPDT, MOMENTARY
1	1	22081	SWITCH; SPDT, MOMENTARY



VENCO VENTURO INDUSTRIES LLC
CINCINNATI, OHIO

REPLACEMENT PARTS DWG & LIST

21991 PNDNT; 3 FNCTN ET CRNS, ESTP/HRN

DATE
10-03-14

SECTION
C400

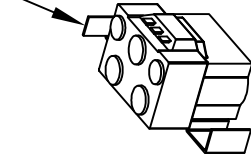
SUPERSEDES
-

23076

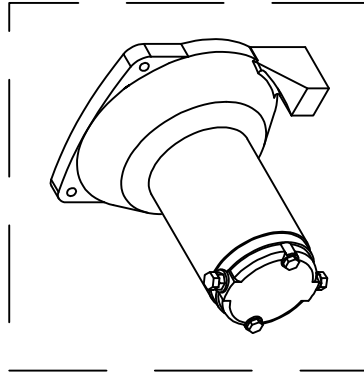
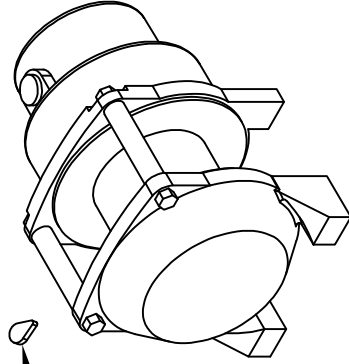
WINCH REPLACEMENT PARTS

WARN DC1200
WINCH P/N 20586

CONTACTOR
WARN P/N 20499
COMEUP P/N 28402



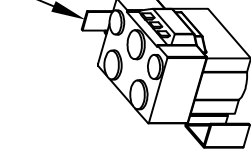
21214
CABLE WEDGE



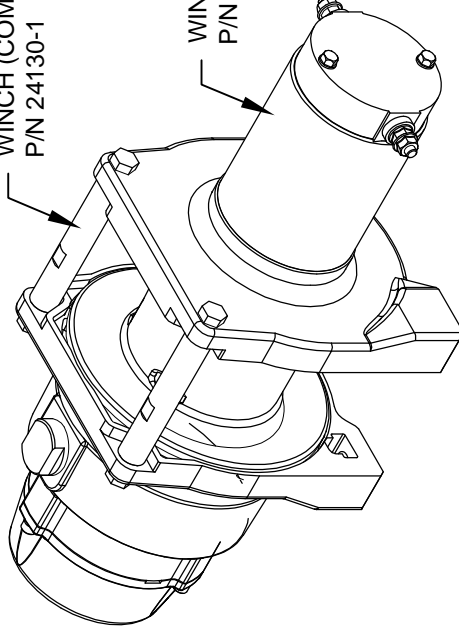
20788 MOTOR
REPLACEMENT KIT
INCLUDES END PIECE

COMEUP GTD-1200
WINCH P/N 24130-1

CONTACTOR
WARN P/N 20499
COMEUP P/N 28402



WINCH (COMPLETE)
P/N 24130-1



WINCH MOTOR
P/N 24133



VENCO VENTURO INDUSTRIES LLC
CINCINNATI, OHIO

TITLE
REPLACEMENT PARTS DRAWING

CT310KX & ET6K

DATE
02-17-22-E

SUPERSEDES

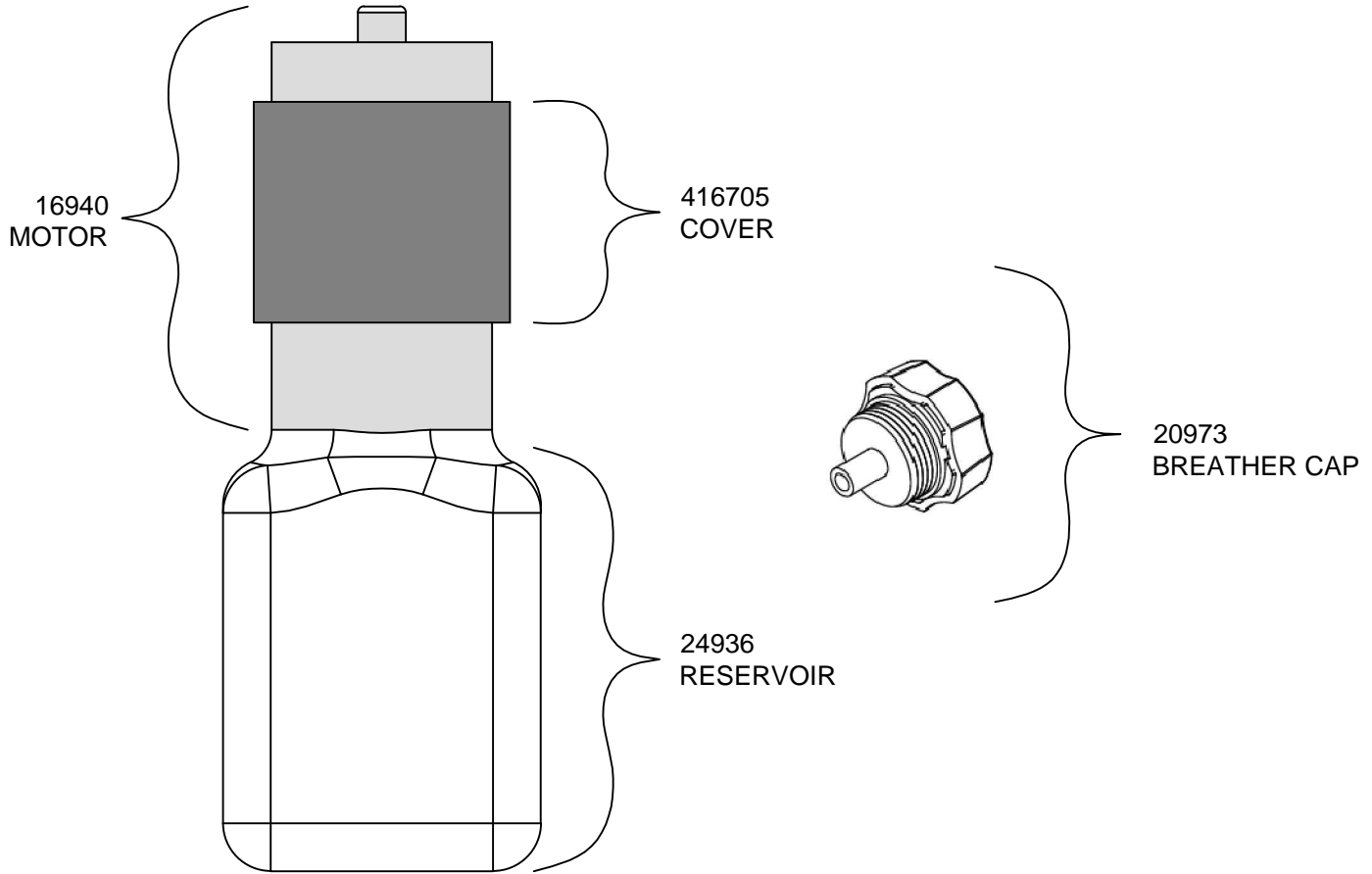
01-26-15D

SECTION

-

20837

20456 REPLACEMENT PARTS DWG/LIST



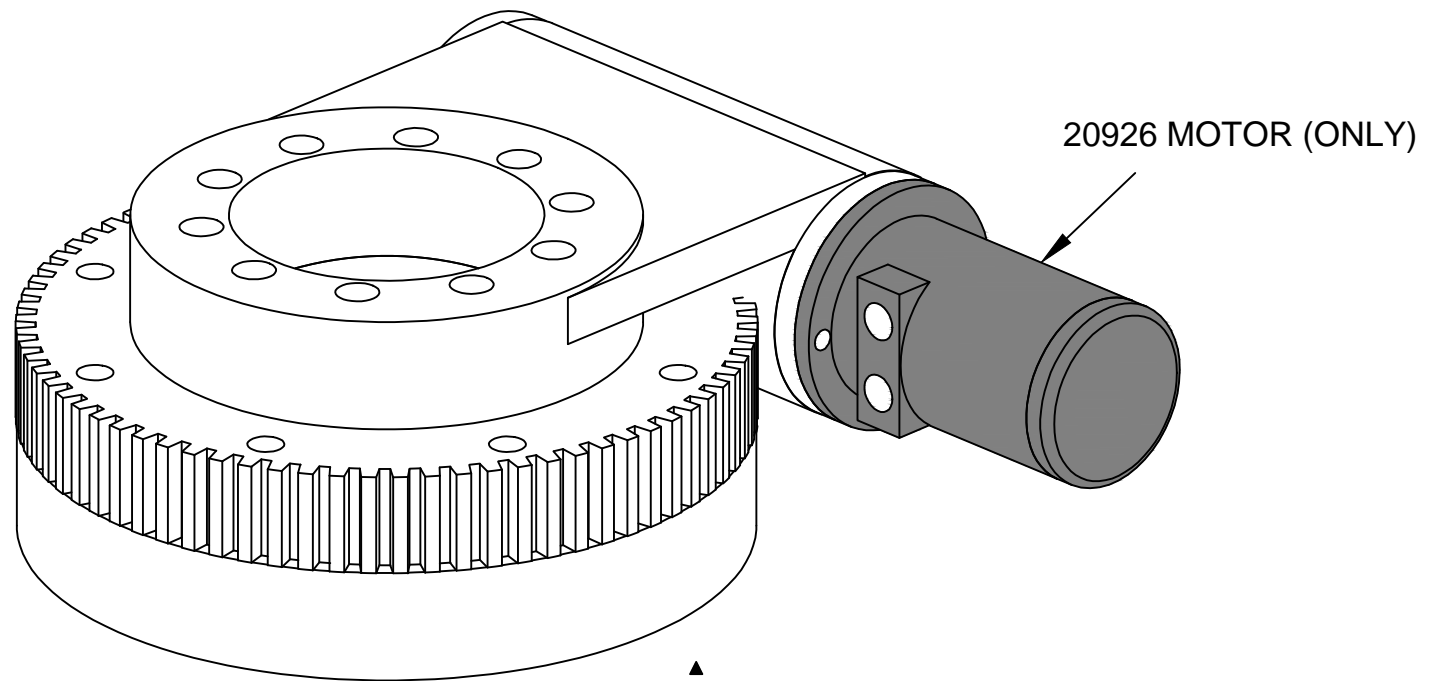
VENCO VENTURO INDUSTRIES LLC
CINCINNATI, OHIO

TITLE
RPLCMNT PARTS DWG
ET6K

DATE
05-26-23A
SUPERSEDES
01-26-15

SECTION
C400
26009

27243 SLEWING SYSTEM REPLACEMENT PARTS



VENCO VENTURO INDUSTRIES LLC
CINCINNATI, OHIO

TITLE

SLEWING SYSTEM REPLACEMENT PARTS

CT310KX & ET6K

DATE

05-26-23B

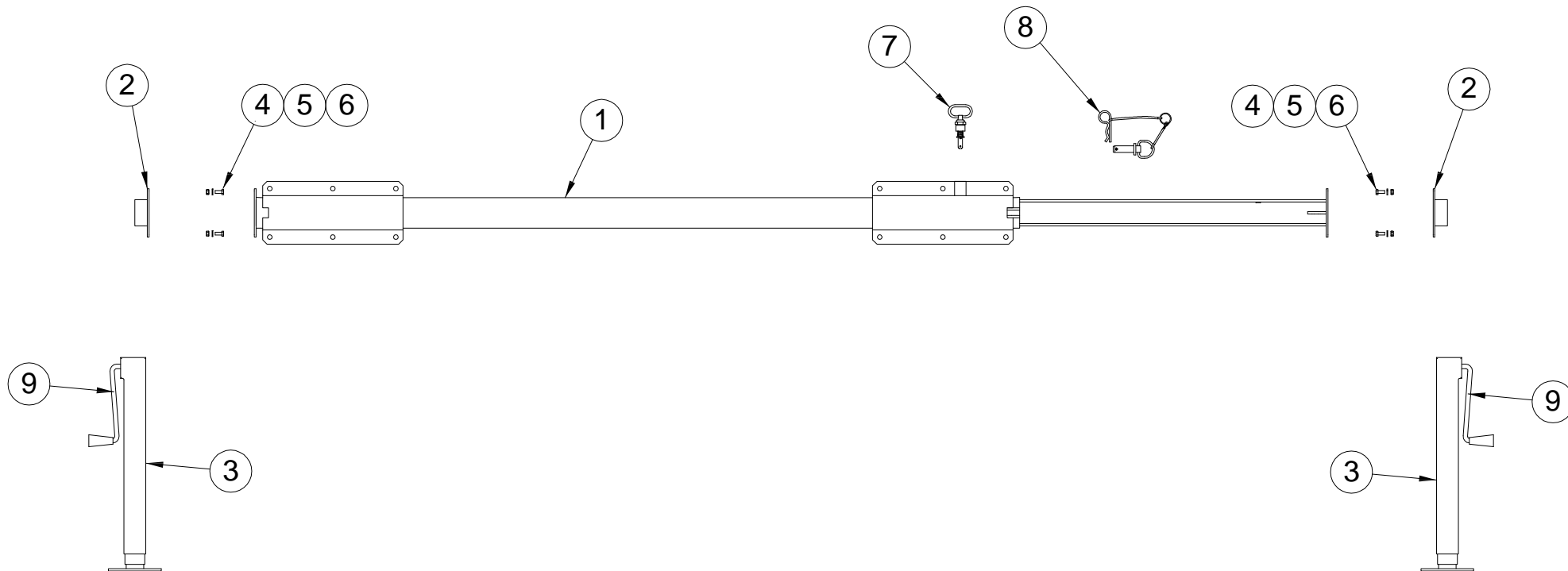
SUPERSEDES

01-26-15A

SECTION

C400

27041



9	2	18586-HANDLE	HANDLE, CRAND-DOWN LEG
8	1	24981	STABILIZER SECURITY PIN
7	1	18520	SPRING LOADED ASSEMBLY
6	8	!LWSH-031	LOCKWASHER - 5/16
5	8	!HNUT-03118	HEX NUT - 5/16-18
4	8	!HHCS03118075	HEX HEAD CAP SCREW - 5/16-18 X 3/4" LONG
3	2	18586	CRANKDOWN LEG
2	2	18587	CRANKDOWN LEG ADAPTER
1	1	18501	TUBE - STABILIZER ASSEMBLY
ITEM	QTY	PART NO	DESCRIPTION



MANUFACTURING, INC.
CINCINNATI, OHIO

TITLE

REPLACMENT PARTS DRAWING & LIST

18500-CD MANUAL STABILIZERS

DATE

12-27-13D

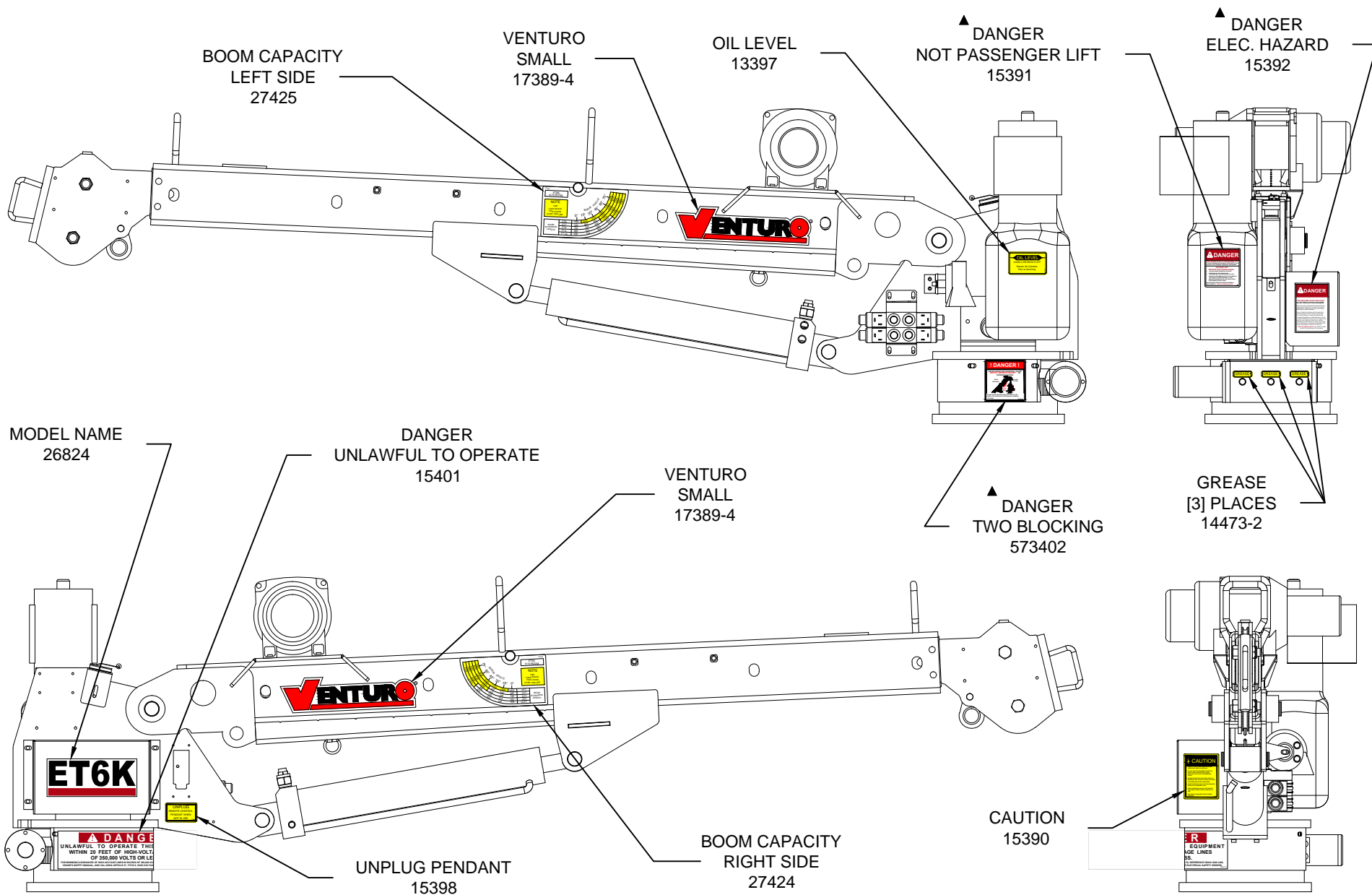
SUPERSEDES

07-28-10C

SECTION

C400

22689



VENCO VENTURO INDUSTRIES LLC
CINCINNATI, OHIO

TITLE
DECAL PLACEMENT

ET6K

DATE
05-31-16C

SUPERSEDES
04-03-15B

SECTION
C400

26822

ET6K FIELD SERVICE LABEL KIT, 26833

PART NO.	QTY.	DESCRIPTION
14473-2	3	DECAL, GREASE
17389-4	2	DECAL, VENTURO - SMALL
27424	1	DECAL, BOOM CAPACITY ET6K RIGHT
27425	1	DECAL, BOOM CAPACITY ET6K LEFT
26824	2	DECAL, MODEL NAME DECAL - ET6K
13397	1	DECAL, OIL LEVEL
16184-1	1	DECAL; HORN RELAY
26833	1	FIELD SERVICE LABEL KIT LIST
26822	1	IDWG; DECAL PLACEMENT
INST-23233	1	SAFETY MANUAL, VENTURO CRANES
15397	1	KIT; ACCIDENT PREVENTION SIGNS

SERIAL NUMBER RANGE: 160000 - CURRENT



VENCO VENTURO INDUSTRIES LLC
CINCINNATI, OHIO

TITLE
FIELD SERVICE LABEL KIT
ET6K

DATE
03-13-23E
SUPERSEDES
08-04-20D

SECTION
C400
26833



VENTURO CRANES LIMITED WARRANTY POLICY

Venturo products are built to last...we guarantee them.

As a purchaser of any new Venturo product covered by warranty, you will receive 1 year of the most complete coverage available...and, at no added cost to you.

1-Year Limited Warranty Policy

This limited policy warrants new products of Venturo to be free from defects in material and workmanship for a period of one (1) year from date of original installation. OEM products or accessories purchased by Venturo as part of or offered with our product will carry the OEM manufacturer's respective warranty. Our warranty covers:

- ***Repair or replacement of product***
- ***Labor to repair or replace product***
- ***Freight to return and/or replace product***

We shall not be liable for any contingent liabilities arising out of the improper function of any products. Warranty shall become void if the product is improperly installed, modified, damaged, abused or used for application other than intended use. There is no warranty of merchantability, fitness for a particular purpose, warranty arising from course of dealing or usage of trade, or any other implied or expressed warranty, except as made specifically herein. This warranty supersedes all previous warranties, written or implied.

Warranty Claims

Venco Venturo Industries LLC will make a good faith effort for prompt correction or other adjustment with respect to any product, which proves to be defective after our inspection and within the warranty period. Before any repairs are attempted or before returning any product, your Venturo Distributor is required to obtain a warranty claim number. This number is necessary for any claim to be considered. To obtain a warranty claim number, Venturo requires the model and serial number. Only authorized Venturo Distributors can perform warranty. For the name and address of your local Venturo Distributor call the **Warranty Claim Department - 513-772-8448**.

WARNING - It is the responsibility of the installer to ensure the installation is completed according to the manufacturer's recommendations, ensure the ultimate user understands how to operate product in a safe manner, and understands the need for regular service and maintenance by an authorized Venturo Distributor. No modifications or alterations may be made to any Venturo product without the expressed written consent of Venco Venturo Industries LLC. Installation of any Venturo product must be done by an authorized Venturo Distributor, to the standards of the industry; including maintenance, service and affixing of all instruction, safety and warning decals. Users should be instructed as to the safe operation at time of delivery. Maintenance, service, operation and safety warning decals are available on request from Venco Venturo Industries LLC.

VENCO VENTURO INDUSTRIES LLC
12110 BEST PLACE | CINCINNATI, OHIO 45241
P: 800-226-2238 | F: 513-326-5427
www.venturo.com