



**VENCO
VENTURO**

INDUSTRIES LLC

ESV-1000

**ENCLOSED SERVICE VAN
CRANE**

VKE*AA

• INSTALLATION & OWNER'S MANUAL •

Dear Venturo ESV-1000 Purchaser,

Thank You!

Thank you for your purchase of the Venturo ESV-1000 Van Crane. This crane was carefully engineered to provide excellent performance when properly installed, operated and maintained.

Please read this entire manual prior to installing and operating the equipment. It instructs you how to safely and easily install, set up and operate your crane. Please be sure that you, and any other person who will operate the crane, carefully follow the recommended safety practices at all times. Failure to do so could result in personal injury or property damage.

All information in this manual is relative to the most recent product information available at the time of printing. Review this manual for proper installation and to familiarize yourself with the crane's features and operations. We reserve the right to change product specifications, designs and equipment without notice and without incurring obligation.

If you have any problems or questions concerning the ESV-1000, please call Venco Venturo Industries LLC directly. We want to ensure your complete satisfaction at all times.

Sincerely,

Venco Venturo Industries LLC

Record Product Information

Before installing, setting up and operating your new crane, please locate the serial plate on the crane and record the information provided to the right. You can locate the serial number plate by looking at where the primary boom connects with the mast at the top. This information will be necessary, should you seek technical support.

Model:

Serial Number:

Product Registration and Customer Support

Please register your product on our website, www.venturo.com/warranty-policy/.

If you have difficulty assembling this product or have any questions regarding the controls, operation, or maintenance of this crane, you can seek help from our expert customer support. Choose from the options below:

- Visit us on the web at www.venturo.com
 - Download this owner's manual at www.venturo.com/owner-manuals/
- Call a Customer Support Representative or Technical Support at (800) 226-2238
- Locate the nearest Venturo Distributor in your area (800) 226-2238 or info@venturo.com



VENCO VENTURO INDUSTRIES LLC
CINCINNATI, OHIO

TITLE

LEAD PAGE

ESV-1000

DATE

02-16-17

SUPERSEDES

-

SECTION

-

ESV001

TABLE OF CONTENTS

ESV-1000 VAN CRANES (VKERAB, VKELAB)

ESV001 LEAD PAGE

SECTION 100 DESCRIPTION & SPECIFICATIONS

ESV109 DIMENSIONS & CAPACITY
CEV331 WIRE ROPE & HOOK SPECIFICATIONS

SECTION 150 SAFETY

CE-044 CRANE SAFETY & HAZARDS
ESV107 OPERATION INSTRUCTIONS & MAINTAINENCE
ESV108 USER INSTRUCTIONS
CEV170 SAFETY DECALS, VAN CRANES
CEV171 SAFETY DECALS, VAN CRANES
ESV114 DECAL DRAWING & LIST

SECTION 200 INSTALLATION

ESV101 PACKAGE CONTENTS
ESV102 MINIMUM HARDWARE SPECIFICATIONS
ESV103 INSTALLATION INSTRUCTIONS, PG 1
ESV104 INSTALLATION INSTRUCTIONS, PG 2
ESV105 ELECTRICAL INSTALLATION INSTRUCTIONS
CEV332 WIRING DIAGRAM

SECTION 400 REPLACEMENT PARTS

ESV110 REPLACEMENT PARTS, EXPLODED VIEW
ESV111 REPLACEMENT PARTS, LIST
ESV112 REPLACEMENT HARDWARE, EXPLODED VIEW
ESV113 REPLACEMENT HARDWARE, LIST
ESV115 DECAL PLACEMENTS
ESV116 FIELD SERVICE LABEL KIT



VENCO VENTURO INDUSTRIES LLC
CINCINNATI, OHIO

TITLE
TABLE OF CONTENTS
ESV-1000, VKE*AB

DATE
02-25-19
SUPERSEDES
-

SECTION
TOC
ESV124

SECTION 100

DESCRIPTION

&

SPECIFICATIONS



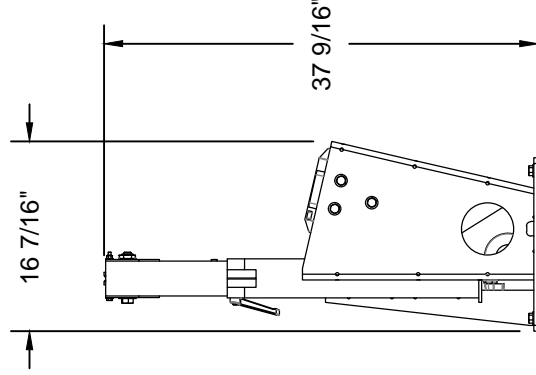
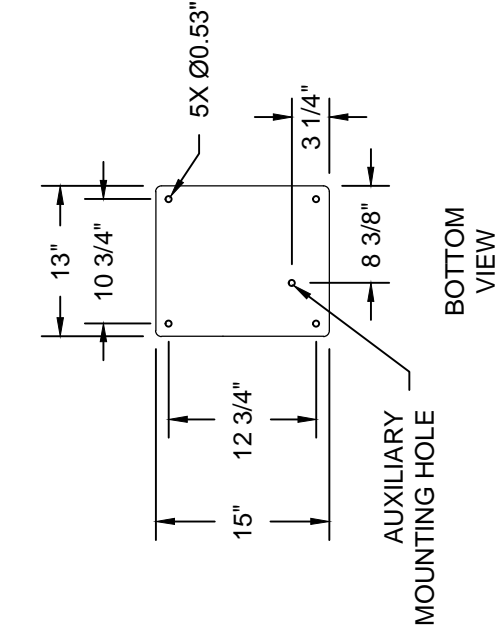
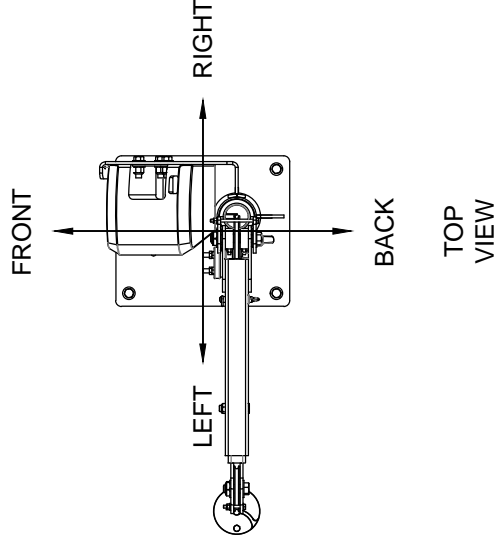
CAUTION

- 1 1000 LBS MAXIMUM CAPACITY IS BASED UPON TYPICAL VAN FLOOR STRUCTURE LIMITATIONS, NOT WINCH CAPACITY. IT IS THE SOLE RESPONSIBILITY OF THE INSTALLER TO DETERMINE IF ADDITIONAL FLOOR REINFORCEMENT IS NECESSARY.

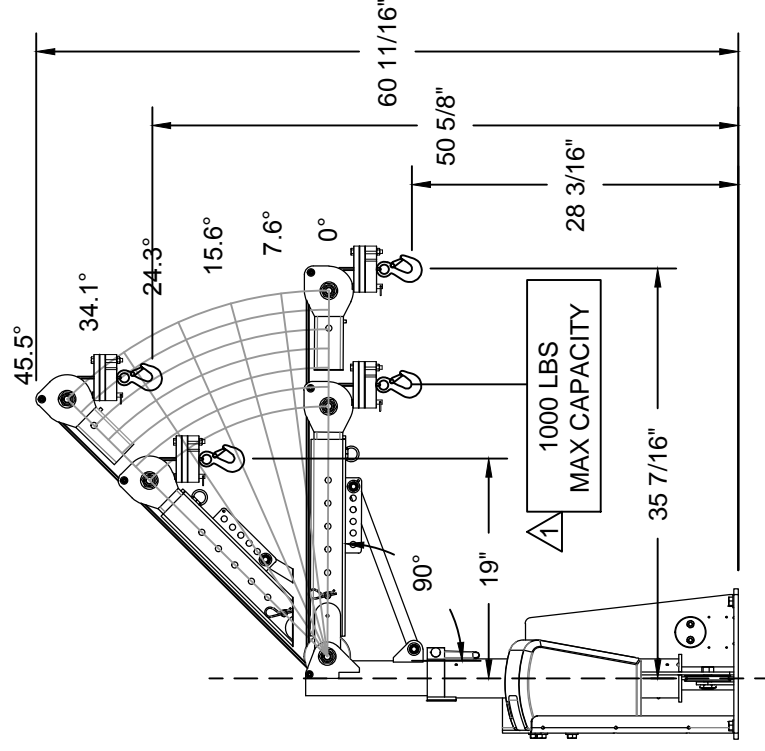


WARNING

- THESE PRODUCTS ARE NOT PASSENGER LIFTS. THEY ARE NOT DESIGNED OR INTENDED TO BE USED TO LIFT, SUPPORT OR OTHERWISE TRANSPORT PERSONNEL.

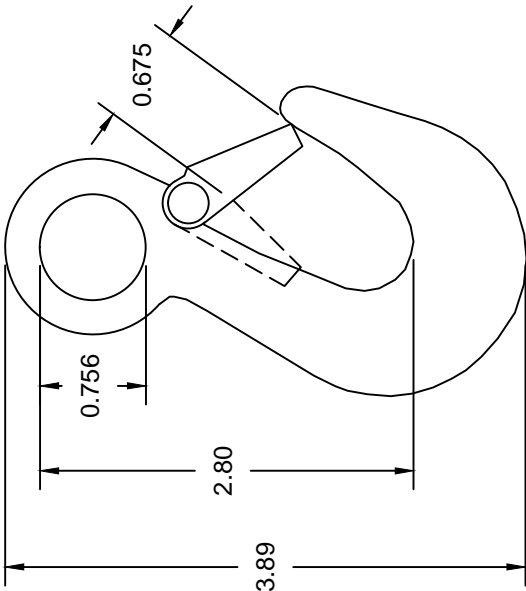


RIGHT
VIEW

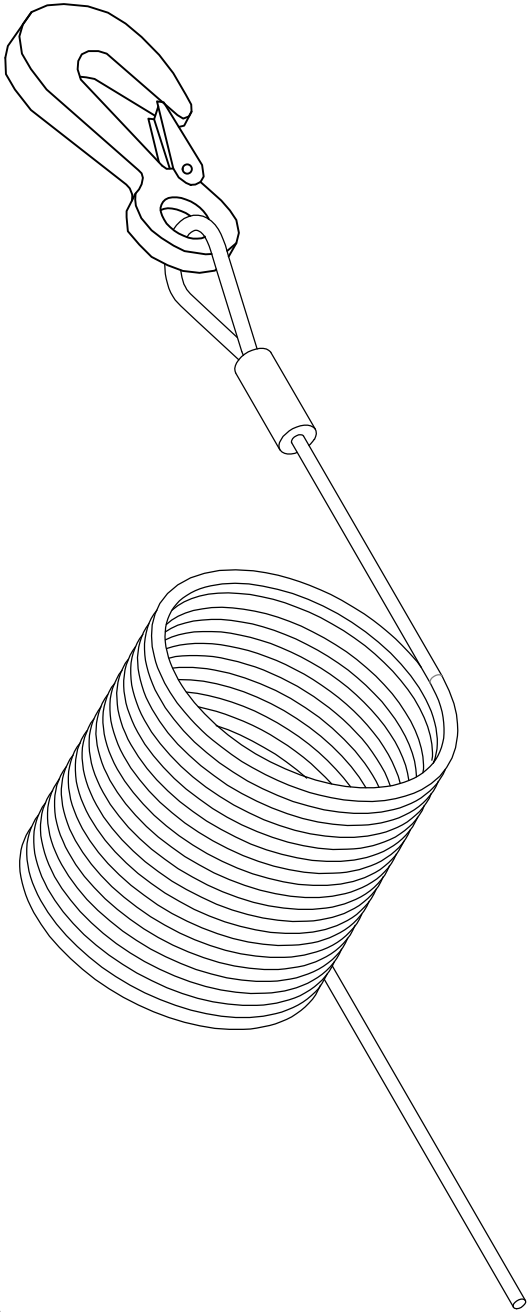



FRONT
VIEW

CEV329 WIRE ROPE & HOOK ASSEMBLY



DETAILS:
3/16" X 20'
GALVANIZED AIRCRAFT CABLE
(4200 LBS BREAKING STRENGTH)
WITH 7500 LB. SAFETY HOOK
LESS THIMBLE.



 VENCO VENTURO INDUSTRIES LLC CINCINNATI, OHIO	TITLE		DATE	SECTION
	WIRE ROPE & HOOK SPECIFICATIONS		02-05-19	C300
	ESV-1000		SUPERSEDES ***	CEV331

SECTION 150

SAFETY

CAUTIONS

1. INSPECT VEHICLE AND CRANE, INCLUDING OPERATION, PRIOR TO USE DAILY.
2. DO NOT USE THIS EQUIPMENT EXCEPT ON SOLID, LEVEL SURFACE WITH CRANE MOUNTED ON FACTORY RECOMMENDED TRUCK.
3. BEFORE OPERATING THE CRANE, REFER TO MAXIMUM LOAD (CAPACITY) CHART ON CRANE FOR OPERATING (LOAD) LIMITATIONS.
4. DO NOT OPERATE, WALK, OR STAND BENEATH BOOM OR A SUSPENDED LOAD.
5. UNPLUG PENDANT (AND OPTIONAL ELECTRIC QUICK DISCONNECT, IF ON MODEL) WHEN NOT IN USE.
6. FOR TRAVEL, BOOM MUST BE TIED DOWN IN THE STOWED POSITION.

DANGER

- THIS CRANE IS NOT A PASSENGER LIFT
- IT IS NOT DESIGNED OR INTENDED TO BE USED TO LIFT, SUPPORT, OR OTHERWISE TRANSPORT PERSONNEL.

YOU MUST NOT OPERATE THIS CRANE UNLESS :

1. YOU HAVE BEEN TRAINED IN THE SAFE OPERATION OF THIS CRANE, **AND**
2. YOU KNOW AND FOLLOW THE SAFETY AND OPERATION RECOMMENDATIONS CONTAINED IN THE MANUFACTURER'S MANUALS, YOUR EMPLOYER'S WORK RULES, AND APPLICABLE GOVERNMENT REGULATIONS. AN UNTRAINED OPERATOR SUBJECTS THEMSELVES AND OTHERS TO DEATH OR SERIOUS INJURY.

REFERENCE SAFETY MANUAL INST-23233



VENCO VENTURO INDUSTRIES LLC
CINCINNATI, OHIO

TITLE	DATE	SECTION
CRANE SAFETY & HZRDS	02-20-17E	C200
▲ CE-/CEV/ESV SERIES CRANES	SUPERSEDES 09-08-16D	CE-044

OPERATING INSTRUCTIONS

ELECTRIC WINCH

The winch is operated by a control switch in a plug-in remote pendant. Unplug the pendant and store it in the vehicle when the crane is not in use. For optional 110 volt AC winch, the pendant is non-removable.



C A U T I O N

- BOOM MUST BE SECURED (STOWED POSITION) AND BRAKE SET BEFORE DRIVING VEHICLE. DO NOT DRIVE WITH BOOM EXTENDED OUT.

MASTER DISCONNECT SWITCH

The Master Disconnect Switch isolates electrical power from the crane and should be switched OFF anytime the crane is NOT in use.

OPTIONAL CIRCUIT BREAKER

An optional 150amp circuit breaker (#22964-150) is available. The circuit breaker should be placed between the lead-acid battery supply and the crane; **as close as practical to the lead-acid battery.**

MAINTENANCE

WINCH

The winch is permanently lubricated. There may be grease leakage out of the winch, especially during the first few operations. This is normal and it is not necessary to grease or oil any part of the winch at any time.

WIRE ROPE

Inspect wire rope periodically. If any wear or fraying exists, replace wire rope.



VENCO VENTURO INDUSTRIES LLC
CINCINNATI, OHIO

TITLE

OPER. INSTR. & MNTNCE

DATE

02-20-17

SECTION

C200

ESV-1000 SERIES CRNS

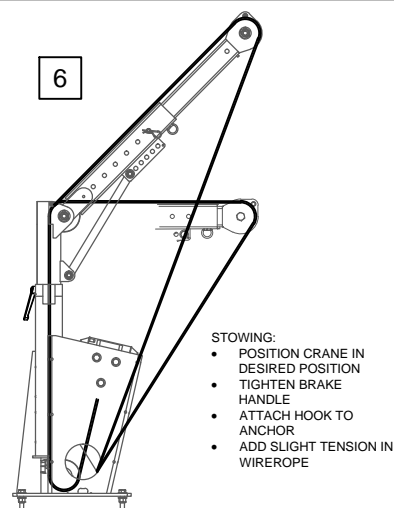
SUPERSEDES

-

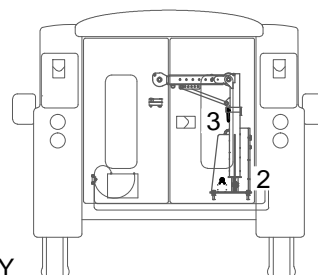
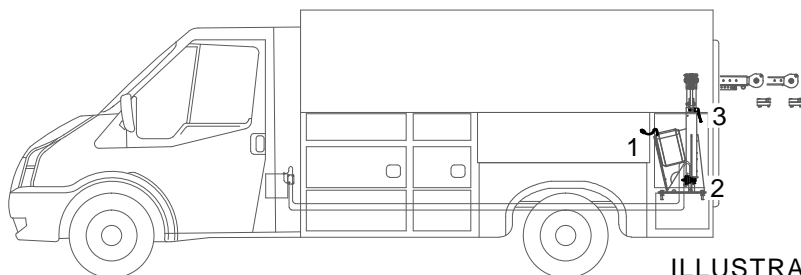
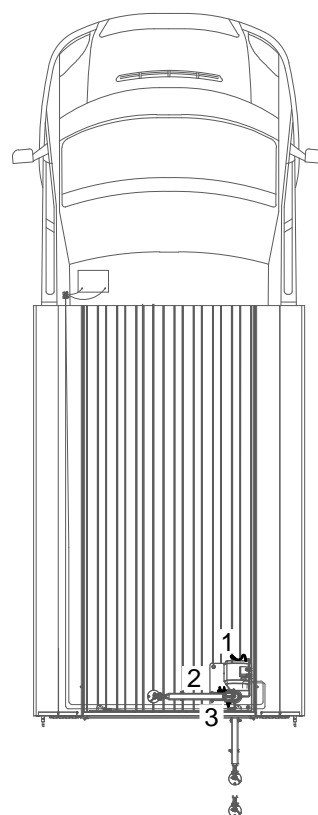
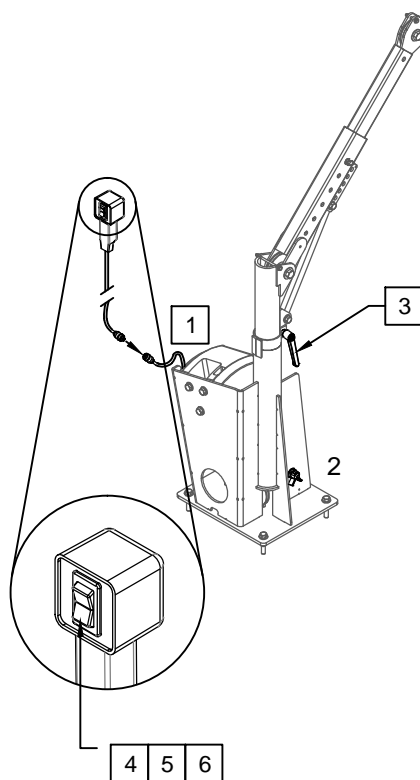
ESV107

USER GUIDE ESV-1000 SERIES CRANES

- Prior to using crane, read all operator instructions and Safety Manual
- Make sure you are familiar with all of the controls, functions, and locking mechanisms
- Read and adhere to all safety placards that are installed on the crane and the vehicle
- Since the manufacturer has no direct control over the crane application and operation, conformance with good safety practices is the responsibility of the operator
- The vehicle and crane are to be positioned on firm level surfaces with the chassis brake engaged
- Whenever possible, always rotate the crane or boom by 'pushing' away from you
- Always use proper rigging hardware and slings



1. Plug control pendant into socket located on the crane
2. Turn Master Disconnect Switch to the 'ON' position
3. Loosen Brake Handle to rotate the crane and center the wire rope hook over the load
4. Using the pendant, lower hook to the load and attach to the proper rigging hardware / sling(s)
5. Carefully raise the load so it will clear the van floor and move load to desired location
6. Unhook the load and stow the hook. Reposition the crane into the stowed position for travel, and secure the load.



ILLUSTRATIONS FOR REFERENCE ONLY



VENCO VENTURO INDUSTRIES LLC
CINCINNATI, OHIO

TITLE
USER INSTRUCTIONS

ESV-1000 SERIES CRANES

DATE
02-27-19A

SUPERSEDES
02-20-17

SECTION
C200

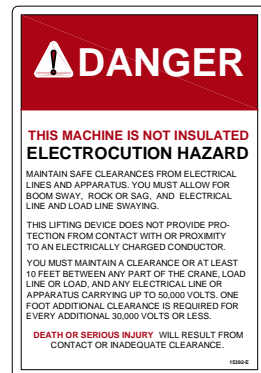
ESV108



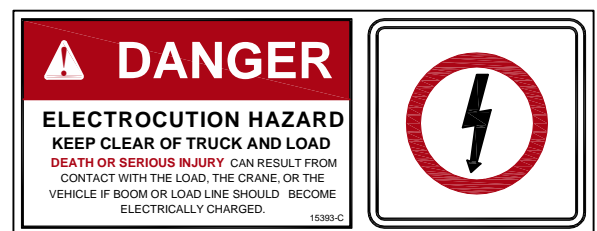
DECAL #: 15390
 DESCRIPTION: CAUTION, INSPECT VEHICLE & CRANE...
 PURPOSE: TO INFORM THE OPERATOR OF KEY OPERATING REQUIREMENTS.
 QUANTITY: 1
 PLACEMENT: UPPER MAST ON SIDE, OPPOSITE PRIMARY BOOM



DECAL #: 15391
 DESCRIPTION: DANGER, NOT A PASSENGER LIFT
 PURPOSE: TO INFORM OPERATOR NOT TO LIFT, SUPPORT, OR TRANSPORT PERSONNEL, AND TO ENSURE OPERATOR IS ADEQUATELY TRAINED.
 QUANTITY: 1
 PLACEMENT: UPPER MAST ON SIDE, OPPOSITE PRIMARY BOOM



DECAL #: 15392
 DESCRIPTION: DANGER, ELECTROCUTION HAZARD, MACHINE (CRANE)
 PURPOSE: TO INFORM OPERATOR THAT MACHINE (CRANE) REPRESENTS AN ELECTROCUTION HAZARD SHOULD IT COME CLOSE TO OR IN CONTACT WITH AN ELECTRICAL VOLTAGE SOURCE.
 QUANTITY: 1
 PLACEMENT: UPPER MAST ON SIDE, OPPOSITE PRIMARY BOOM



DECAL #: 15393
 DESCRIPTION: DANGER, ELECTROCUTION HAZARD, VEHICLE (TRUCK)
 PURPOSE: WARNS OF DANGER FROM ELECTRICALLY CHARGED VEHICLE, CRANE, OR LOAD.
 QUANTITY: 4
 PLACEMENT: EACH SIDE & EACH END OF VEHICLE



VENCO VENTURO INDUSTRIES LLC
 CINCINNATI, OHIO

TITLE
SAFETY DECALS

VENTURO VAN CRANES

DATE
09-29-16A

SUPERSEDES
08-02-16

SECTION
C400

CEV170

DECAL #: 15513
 DESCRIPTION: MASTER DISCONNECT SWITCH
 PURPOSE: TO INFORM THE OPERATOR OF LOCATION AND OPERATION OF MASTER DISCONNECT SWITCH
 QUANTITY: 1
 PLACEMENT: ON MASTER DISCONNECT SWITCH BRACKET



DECAL #: 15398
 DESCRIPTION: UNPLUG REMOTE CONTROL
 PURPOSE: TO INFORM OPERATOR TO UNPLUG REMOTE CONTROL WHEN NOT IN USE
 QUANTITY: 1
 PLACEMENT: NEAR PENDANT SOCKET



DECAL #: 573403
 DESCRIPTION: WARNING - STOWING
 PURPOSE: TO INFORM OPERATOR TO STAY AWAY FROM THE BOOM WHEN STOWING
 QUANTITY: 1
 PLACEMENT: UPPER MAST ON SIDE, OPPOSITE PRIMARY BOOM



VENCO VENTURO INDUSTRIES LLC
 CINCINNATI, OHIO

TITLE
 SAFETY DECALS

VENTURO VAN CRANES

DATE
 09-29-16A

SUPERSEDES
 08-02-16

SECTION
 C400

CEV171

DECAL DRAWING & LIST
ESV-1000 SERIES CRANES

PART NO.: 15672-1000
DECAL: CAPACITY 1000 LBS
FUNCTION: TO INFORM OPERATOR OF MAXIMUM LIFTING CAPACITY
QUANTITY: 2
PLACEMENT: SECONDARY BOOM PLATE, BOTH SIDES



PART NO.: CEV326
DECAL: MODEL NAME
FUNCTION: TO SHOW THE MODEL OF THE CRANE
QUANTITY: 1
PLACEMENT: ONE ON BACK SIDE OF WINCH MOUNTING PLATE



PART NO.: ▲ 17389-4
DECAL: VENTURO
FUNCTION: MANUFACTURER'S LOGO
QUANTITY: 1
PLACEMENT: ▲ GUSSET FACING REAR



PART NO.: 24964 (MAY NOT APPLY TO ALL MODELS)
DECAL: DANGER, STABILIZERS, STAND CLEAR
FUNCTION: TO INFORM OPERATOR TO STAND CLEAR OF STABILIZER JACK LEG
QUANTITY: 2
PLACEMENT: JACK LEG, NEAR TOP ON SAME SIDE AS HAND CRANK



VENCO VENTURO INDUSTRIES LLC
CINCINNATI, OHIO

TITLE
DECAL DRAWING & LIST

ESV-1000 SERIES CRANES

DATE
01-05-18A

SUPERSEDES
02-24-17

SECTION
C400

ESV114

SECTION 200

INSTALLATION



PACKAGE CONTENTS ESV-1000 SERIES CRANES

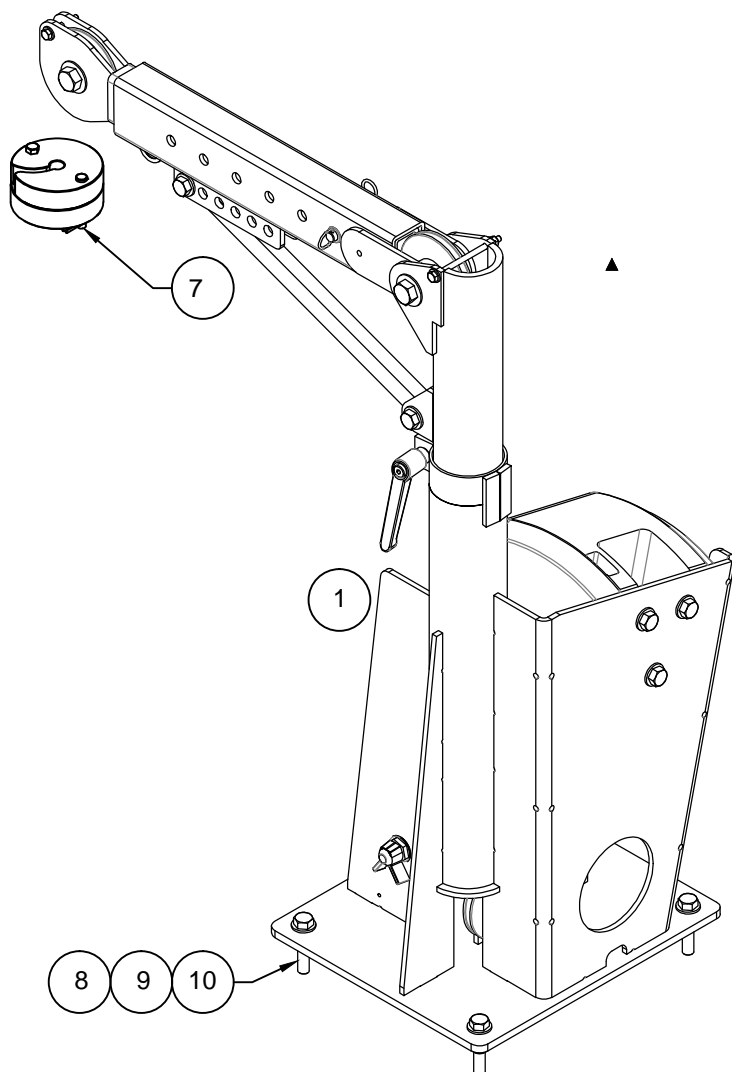
The ESV-1000 Series Crane will ship with some sections pre-assembled from the factory. Below are illustrations to help identify the Van Crane and Installation Kit components.

ESV - 1000 VAN CRANE

Locate and identify the following crane sections:

1. ESV-1000 Crane frame with winch

NOTE: Some fasteners are located in the installation kit.



ESV118 INSTALLATION KIT

Locate and identify the following components:

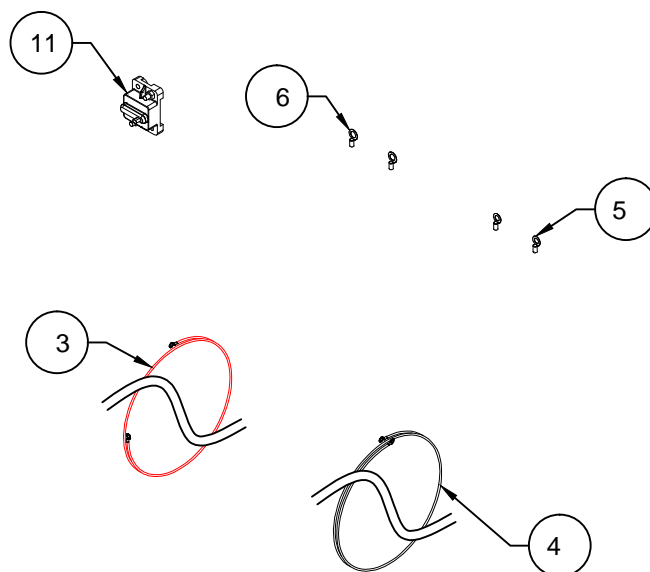
- † 2. [1] Installation Kit Box (#BOX24*12*8)
3. [1] Red Battery Cable (#01025-4*29FT)
4. [1] Black Battery Cable (#01025-4*28FT)
5. [2] 5/16 Terminal Ring (!TERM4G313RG)
6. [2] 3/8 Terminal Ring (!TERM4G375RG)
7. [1] Headache Ball Assembly (#16735)

FASTENERS

8. [4] 1/2-13 X 2-1/2" Hex Head Cap Screws (!HHCS05013150)
9. [8] 1/2" SAE Flat Washers (!FWSH-050SAE)
10. [4] 1/2-13 Lock Nuts, Nylon (!LNUT-05013)

OPTIONAL EQUIPMENT

11. [1] 150A CIRCUIT BREAKER (#22946-150)



† NOT SHOWN



VENCO VENTURO INDUSTRIES LLC
CINCINNATI, OHIO

TITLE
PACKAGE CONTENTS

ESV-1000 (VKE*AB)

DATE
02-25-19A

SUPERSEDES
02-16-17

SECTION
C200

ESV101

INSTALLATION INSTRUCTIONS / MINIMUM HARDWARE SPECIFICATIONS
ESV-1000 SERIES CRANES

THE ESV-1000 VAN CRANE IS DESIGNED TO BE INSTALLED IN EITHER THE RIGHT REAR CORNER OF THE VEHICLE (PRIMARY LOCATION) OR THE LEFT REAR CORNER OF THE VEHICLE (SECONDARY LOCATION).

!! MINIMUM HARDWARE SPECIFICATIONS !!

Reinforcement plates

It is the installer's responsibility to ensure the van's floor structure is able to withstand the stresses applied when lifting and maneuvering loads into and out of the van. Additional sub-floor plating may be required.

Bolts

The ESV-1000 mounting bolts should be 1/2" in diameter with 13 threads per inch (1/2-13), grade 5 steel zinc plated. Lengths may vary depending on crane location, vehicle structure, and / or additional reinforcement requirements.

Washers

Use 1/2" flat washers. One [1] flat washer per bolt head (where applicable) and one [1] flat washer for the Nylon lock (nyloc) nut. Washers must be at grade 5 steel and zinc plated.

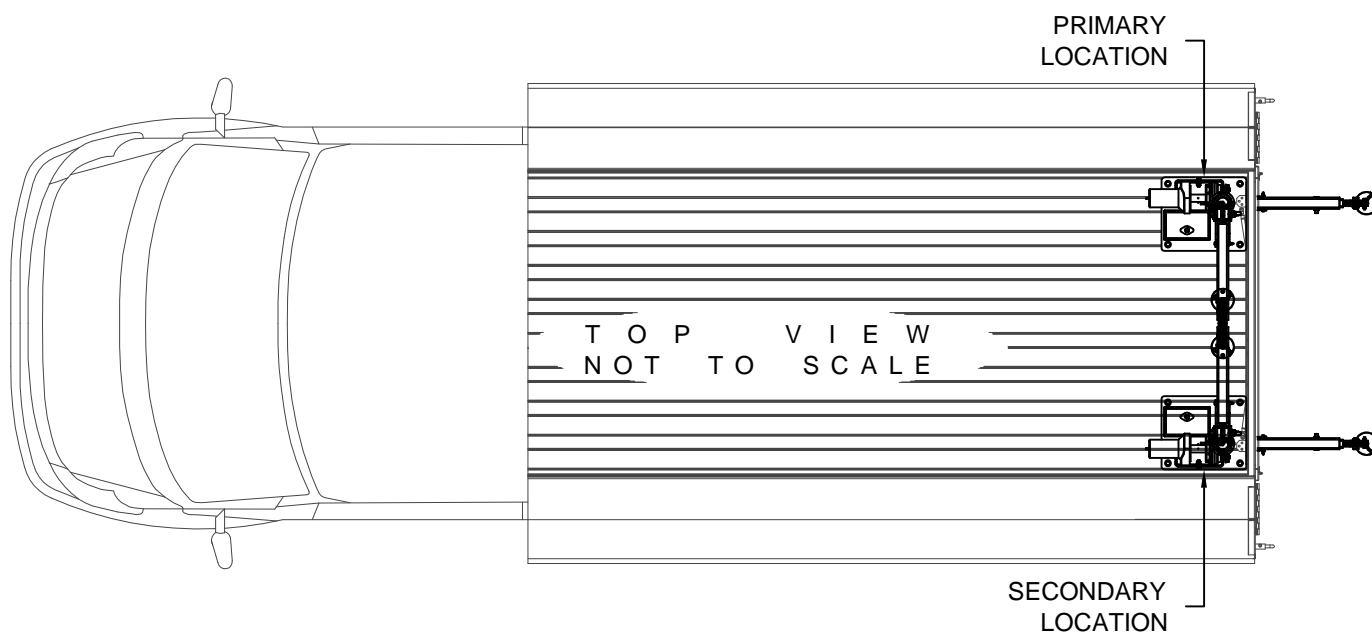
Nyloc Nuts

Four [4] 1/2-13 nyloc nuts must be properly torqued to 75 ft. lbs. to secure the crane to the van floor.



C A U T I O N

- THE ESV-1000 (1000 LBS.) CAPACITY IS BASED UPON VAN'S STRUCTURAL LIMITATIONS OF THE FLOOR, NOT WINCH CAPACITY. IT IS THE INSTALLER'S RESPONSIBILITY TO ENSURE PROPER REINFORCEMENT OF VAN'S STRUCTURE TO SUPPORT THE CRANE AND ITS LOAD.



THE ILLUSTRATION ABOVE SHOWS THE GENERAL PLACEMENT OPTIONS FOR THE ESV-1000 VAN CRANE, AND IS TO BE USED FOR REFERENCE ONLY. SPECIFIC LOCATIONS WILL BE LIMITED BY VEHICLE STRUCTURES AND / OR INSTALLER PREFERENCE(S).



VENCO VENTURO INDUSTRIES LLC
CINCINNATI, OHIO

TITLE

INSTALL. INSTRUCTIONS

ESV-1000 SERIES CRANES

DATE

02-16-17

SUPERSEDES

-

SECTION

C100

ESV102

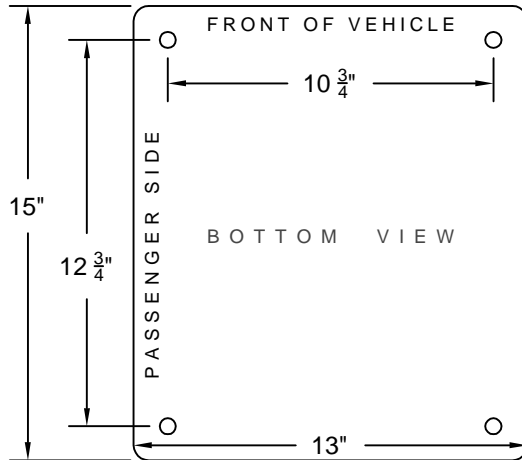
READ ALL INSTRUCTIONS FIRST BEFORE PERFORMING INSTALLATION



C A U T I O N

NOTE ALL SHARP EDGES AND/OR COMPONENTS THAT POSE A POTENTIAL HAZARD WHEN EXAMINING THE VEHICLE. ALWAYS CHECK FOR PROPER CLEARANCE AND ACCESSIBILITY. IT IS THE INSTALLER'S RESPONSIBILITY TO ENSURE PROPER REINFORCEMENT OF THE VEHICLE'S STRUCTURE TO SUPPORT THE CRANE AND ITS LOAD.

1



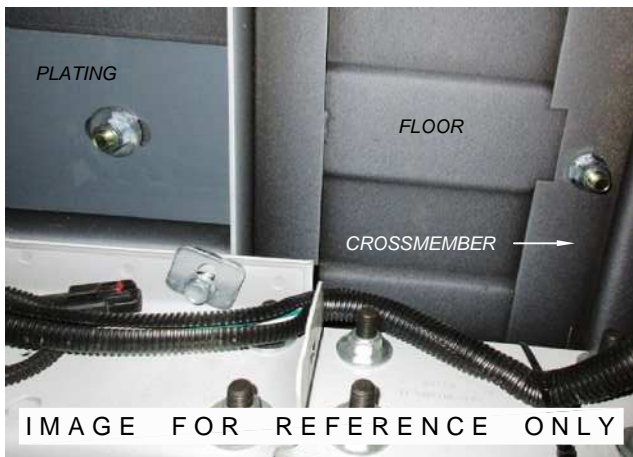
2



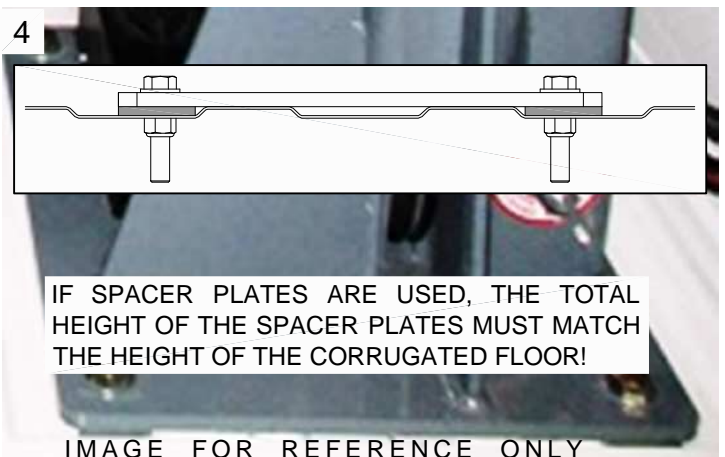
Using the above dimensions, carefully measure and check the undercarriage of the vehicle in the area where you plan to place the crane.

Avoid obstacles that may interfere with the placement of the crane and its mounting components (i.e. brake lines, fuel lines, wiring harnesses, etc.).

3



4



IF SPACER PLATES ARE USED, THE TOTAL HEIGHT OF THE SPACER PLATES MUST MATCH THE HEIGHT OF THE CORRUGATED FLOOR!

It is the installer's responsibility to ensure the vehicle's floor structure is able to withstand the stresses applied when lifting and maneuvering loads into and out of the vehicle. Additional sub-floor plating may be required.

Mark the hole locations and drill [4] clearance holes for 1/2" bolts. If vehicle's floor is corrugated, spacer plates may be required and may need holes drilled to match the crane's mounting holes (ref. caption #1 above left).



VENCO VENTURO INDUSTRIES LLC
CINCINNATI, OHIO

TITLE

INSTALL. INSTRUCTIONS

DATE

02-16-17

SECTION

C100

ESV-1000 SERIES CRANES

SUPERSEDES

-

ESV103

READ ALL INSTRUCTIONS FIRST BEFORE PERFORMING INSTALLATION



D

A

N

G

E

R

THE WEIGHT OF THE ESV-1000 CRANE IS APPROXIMATELY 145 LBS.
ADDITIONAL HELP MAY BE REQUIRED TO PERFORM THE NEXT STEPS .

1

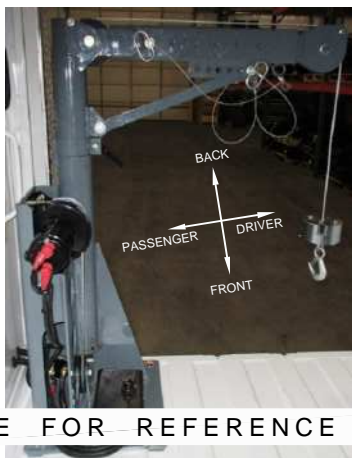


IMAGE FOR REFERENCE ONLY

2

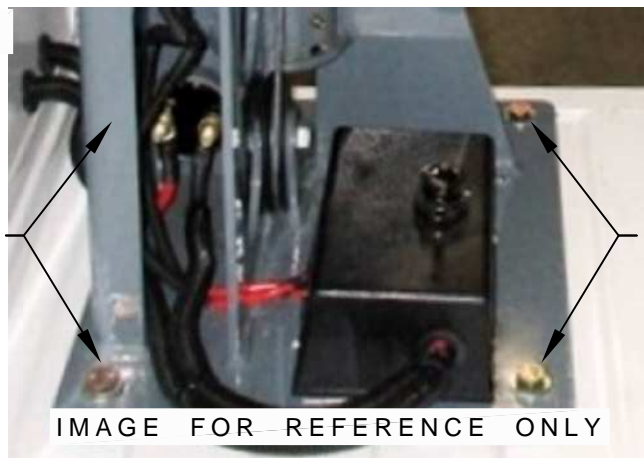


IMAGE FOR REFERENCE ONLY

After holes are drilled, carefully lift the crane into the vehicle.
Gently place the crane on top of the floor/spacers, and align the holes.

Feed [1] 1/2-13 X 2-1/2" bolt with [1] 1/2" SAE Flat Washer (supplied) down through each of the crane's mounting holes.

3

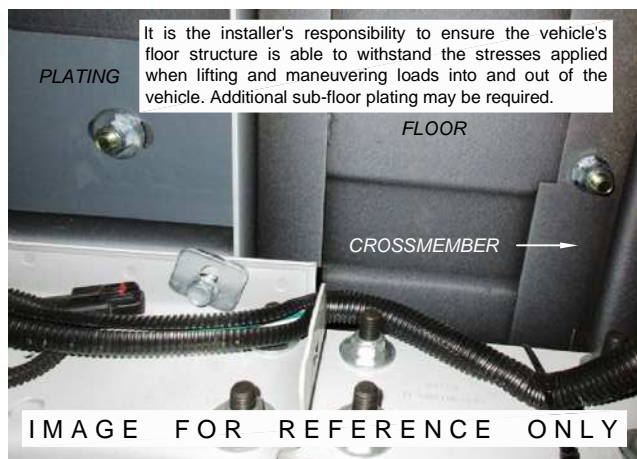


IMAGE FOR REFERENCE ONLY

4

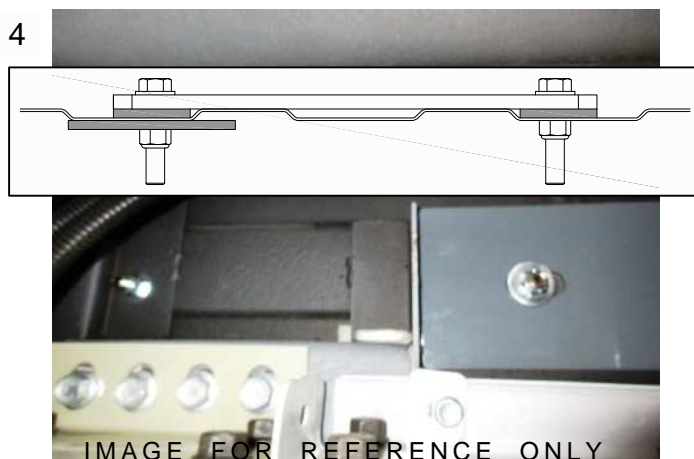


IMAGE FOR REFERENCE ONLY

Insert [1] 1/2" SAE Flat Washer and [1] 1/2-13 Nylon Lock Nut onto each of the mounting bolts (supplied).

Before applying torque to fasteners, inspect for pinch points and remove any obstacles from interfering with mounting components. Torque bolts to 75 LBS.



VENCO VENTURO INDUSTRIES LLC
CINCINNATI, OHIO

TITLE

INSTALL. INSTRUCTIONS

ESV-1000 SERIES CRANES

DATE

02-17-17

SUPERSEDES

-

SECTION

C100

ESV104

INSTALLATION INSTRUCTIONS (ELECTRICAL) ESV-1000 SERIES CRANES

Using the [2] battery cables in the kit (provided), install the ground (black) and 12V (red) to the crane's contactor box per drawing CEV223.

Install the master disconnect switch close to the crane and within reach of the operator. Using the red battery cable, route the cable to the disconnect switch. The cable will need to be cut to length. Strip both ends of cable, install the heat shrink tube and the battery terminal (provided). Crimp or solder the terminals on each end and slide the heat shrink insulator up onto the terminal. Use a heat gun or equivalent to seal the tube to the cable.

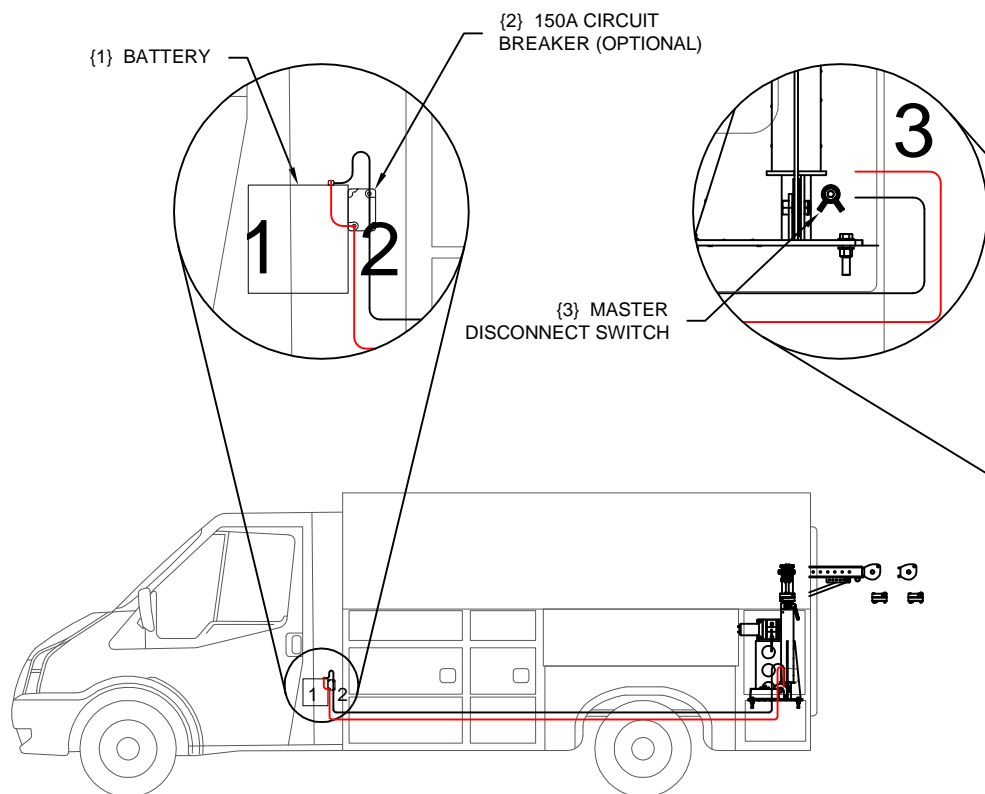
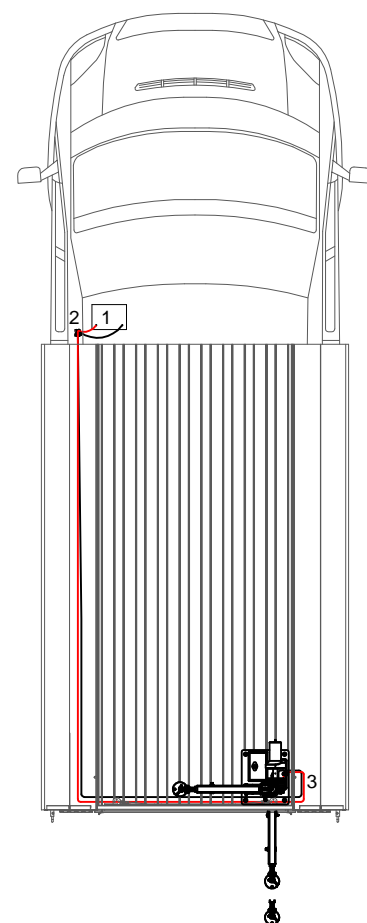
Connect the crane side of the cable to the master disconnect switch and the other cable's end to the second terminal on the switch.

NOTE: Both ground and 12v cables must be routed directly to the battery (not included).

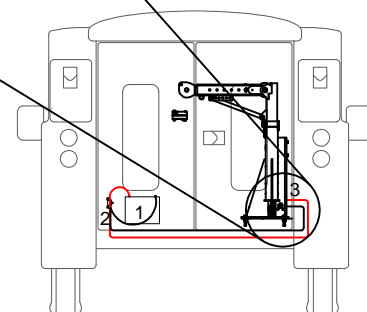
Route cables using the vehicles current harness path. Secure both cables to the battery, while protecting them from sharp edges, heat or anything that could damage the cables. Install the black cable to the negative (-) post and red cable to the positive (+) post.

NOTE: If you purchased the optional 12v 150 amp circuit breaker, install the circuit breaker as close to the battery as possible. The red 12v cable will need to be cut and the heat shrink & terminals installed in the same manner as the master disconnect switch.

Plug the pendant into the contactor box and turn the master disconnect switch 'ON'. Crane is ready for use. When crane is not in use, the master disconnect switch must be 'OFF' and the pendant removed.



ILLUSTRATIONS ARE FOR REFERENCE ONLY.
CABLE PATHS MAY VARY FROM VEHICLE TO VEHICLE.

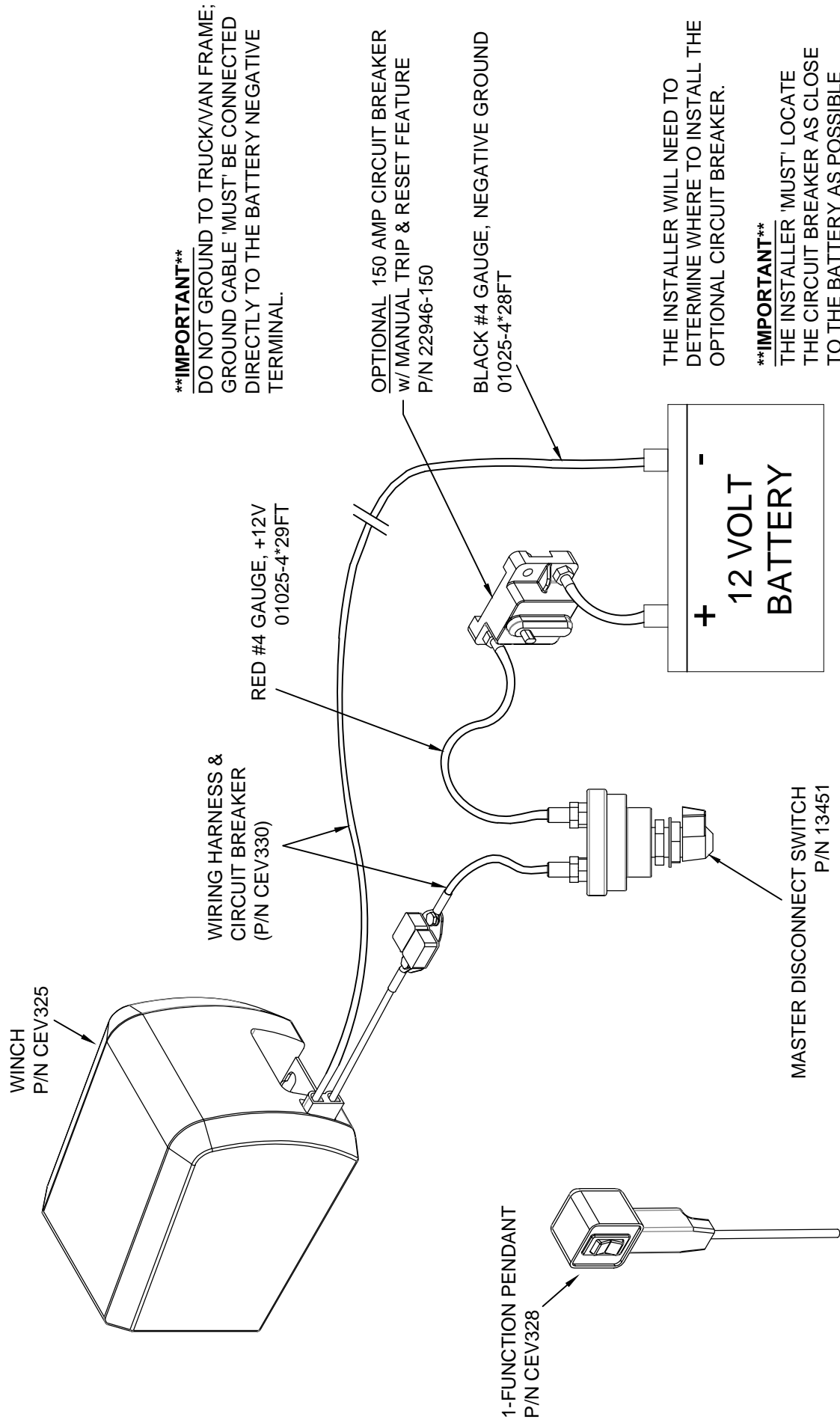


VENCO VENTURO INDUSTRIES LLC
CINCINNATI, OHIO

TITLE
ELEC. INSTALL. INSTRCTNS
ESV-1000 SERIES CRANES

DATE
02-20-17
SUPERSEDES
-


SECTION
C100
ESV105



****IMPORTANT****
DO NOT GROUND TO TRUCK/VAN FRAME;
GROUND CABLE 'MUST' BE CONNECTED
DIRECTLY TO THE BATTERY NEGATIVE
TERMINAL.

THE INSTALLER WILL NEED TO
DETERMINE WHERE TO INSTALL THE
OPTIONAL CIRCUIT BREAKER.

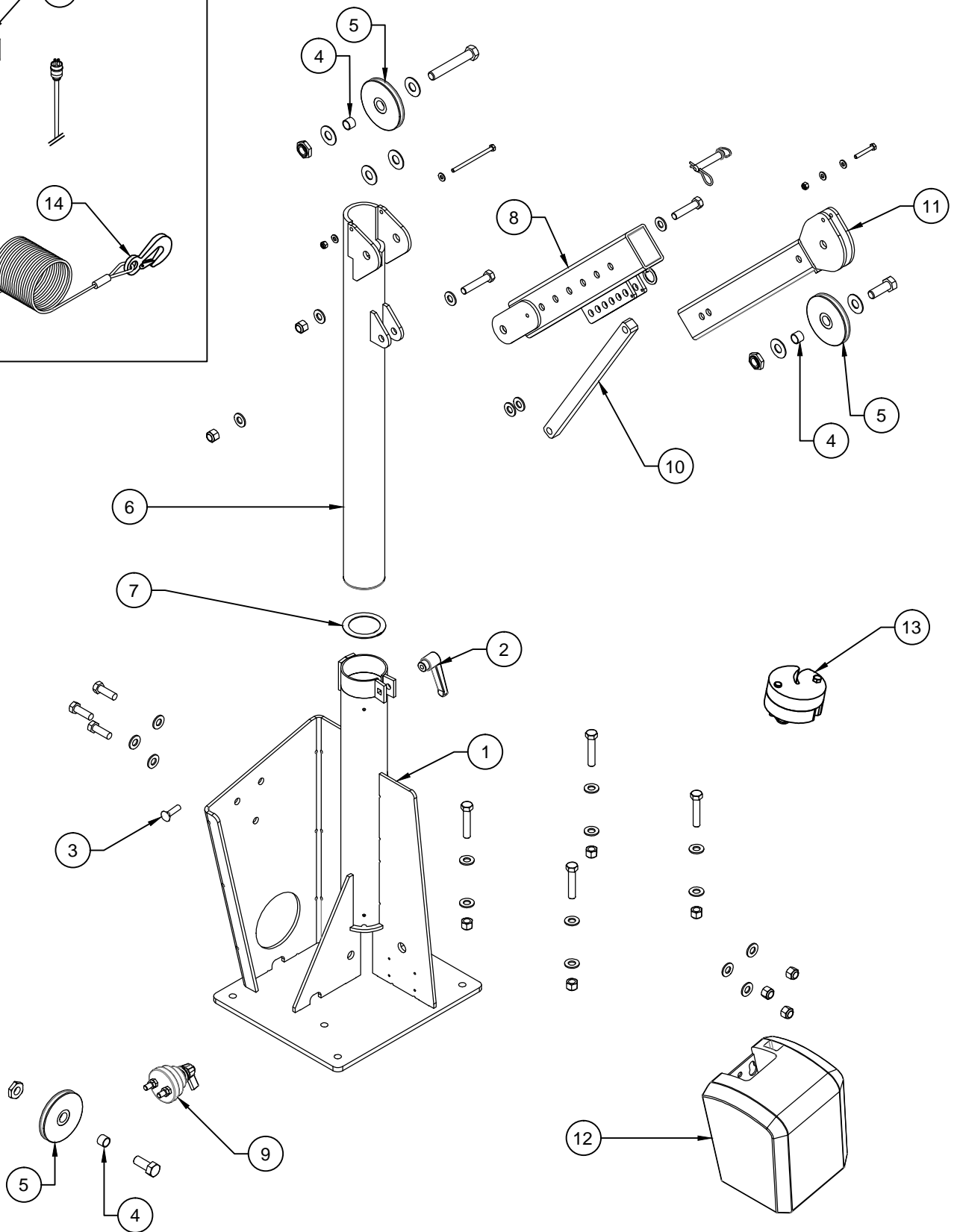
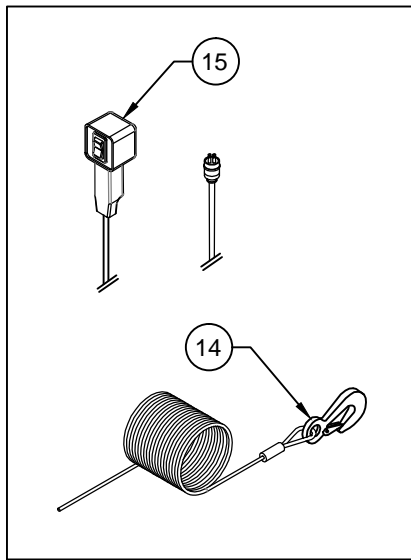
****IMPORTANT****
THE INSTALLER 'MUST' LOCATE
THE CIRCUIT BREAKER AS CLOSE
TO THE BATTERY AS POSSIBLE

 VENCO VENTURO INDUSTRIES LLC CINCINNATI, OHIO	TITLE WIRING DIAGRAM		DATE 02-26-19	SECTION C200
	ESV1000		SUPERSEDES ***	CEV332

SECTION 400

PARTS





VENCO VENTURO INDUSTRIES LLC
CINCINNATI, OHIO

TITLE
REPLACEMENT PART DWG

ESV-1000 SERIES CRANES

DATE
02-27-19A

SUPERSEDES
02-23-17

SECTION
C400

ESV110

REPLACEMENT PARTS LIST
ESV-1000 SERIES CRANES

ITEM	PART NUMBER	QTY	DESCRIPTION
1	23449-2	1	BASE WELDMENT; ESVC (RH)
2	CE-017	1	BRAKE HANDLE
3	!CHCS03816150	1	CARRIAGE BOLT; 3/8-16 X 1-1/2" LG., GR. 5
4	13168-7	3	SHEAVE BUSHING
5	19646	3	SHEAVE
6	-23382	1	MAST WELDMENT; ESVC
7	23371	1	THRUST BEARING; BRONZE, 3" O.D. X 2" I.D. X 0.12" THICK
8	23383	1	PRIMARY BOOM WELDMENT; ESVC
9	13451	1	MASTER DISCONNECT SWITCH
10	23370	1	BOOM STRUT
11	23384	1	SECONDARY BOOM WELDMENT; ESVC
12	CEV325	1	WINCH W/ CABLE & HOOK
13	16735	1	ASSEMBLY; HEADACHE BALL
14	CEV329	1	WIRE ROPE & HOOK
15	CEV328	1	1-FUNCTION PENDANT
16	-	-	-
17	-	-	-
18	-	-	-
19	-	-	-
20	-	-	-
21	-	-	-
22	-	-	-
23	-	-	-
24	-	-	-
25	-	-	-
26	-	-	-
27	-	-	-
28	-	-	-
29	-	-	-
30	-	-	-

SEE REPLACEMENT PARTS DWG #ESV110



VENCO VENTURO INDUSTRIES LLC
CINCINNATI, OHIO

TITLE

REPLCMNT PART LIST

ESV-1000 SERIES CRNS

DATE

02-27-19A

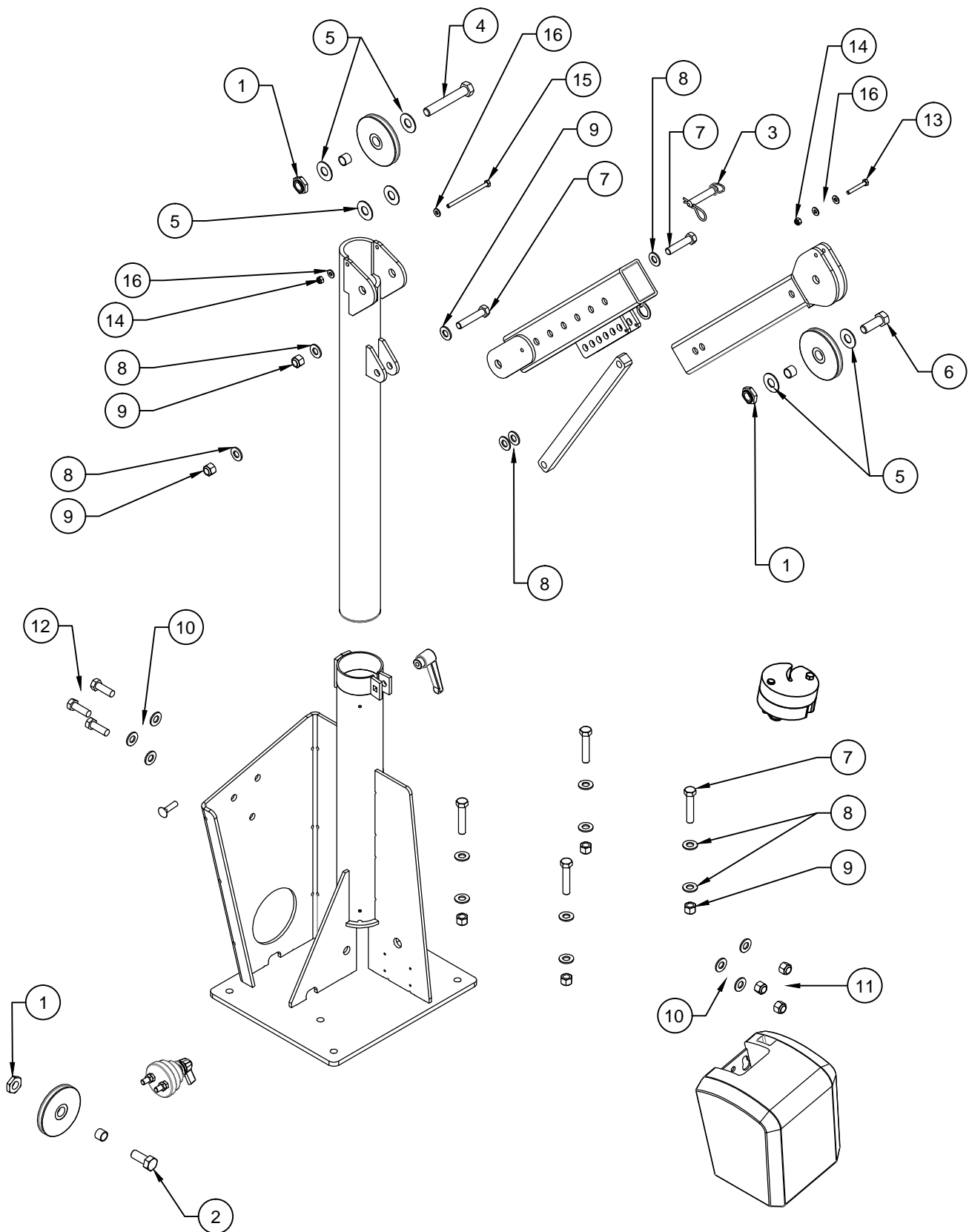
SUPERSEDES

02-24-17

SECTION

C400

ESV111



VENCO VENTURO INDUSTRIES LLC
CINCINNATI, OHIO

TITLE
REPLACEMENT HARDWARE
ESV-1000 SERIES CRANES

DATE
02-27-19B
SUPERSEDES
01-05-18A

SECTION
C400
ESV112

REPLACEMENT HARDWARE LIST
ESV-1000 SERIES CRANES

ITEM	PART NUMBER	QTY	DESCRIPTION
1	!JNUT-06311N	2	JAM NUT; 5/8-11, NYLON LOCK
2	!HHCS06311150-8	1	HEX HEAD CAP SCREW; 5/8-11 X 1-1/2" LG.
3	CE-070	1	PIN ASSEMBLY
4	!HHCS06311400	1	HEX HEAD CAP SCREW; 5/8-11 X 4" LG.
5	!FWSH-063SAE	4	FLAT WASHER; 5/8", SAE
6	!HHCS06311175	1	HEX HEAD CAP SCREW; 5/8-11 X 1-3/4" LG.
7	!HHCS05013250	6	HEX HEAD CAP SCREW; 1/2-13 X 2-1/2" LG.
8	!FWSH-050SAE	12	FLAT WASHER; 1/2", SAE
9	!LNUT-05013	6	LOCK NUT; 1/2-13
10	!FWSH-050SAE	6	FLAT WASHER; 12", SAE
11	!LNUT-05013	3	LOCK NUT; 1/2-13
12	!HHCS05013150	3	HEX HEAD CAP SCREW; 1/2-13 X 1-1/2" LG.
13	!HHCS02520125	1	HEX HEAD CAP SCREW; 1/4-20 X 1-1/4" LG.
14	!LNUT-02520	2	LOCK NUT; 1/4-20
15	!HHCS02520350	1	HEX HEAD CAP SCREW; 1/4-20 X 3-1/2" LG.
16	!FWSH-025	4	FLAT WASHER; 1/4"
17	-	-	-
18	-	-	-
19	-	-	-
20	-	-	-
21	-	-	-
22	-	-	-
23	-	-	-
24	-	-	-
25	-	-	-
26	-	-	-
27	-	-	-
28	-	-	-
29	-	-	-
30	-	-	-

SEE REPLACEMENT PARTS DWG #ESV112



VENCO VENTURO INDUSTRIES LLC
CINCINNATI, OHIO

TITLE
REPLCMNT HRDWR LIST

DATE
02-27-19A

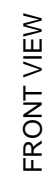
SECTION
C400

ESV-1000 SERIES CRNS

SUPERSEDES
02-24-17

ESV113

15390 CAUTION OPERATIONS



 VENCO VENTURO INDUSTRIES LLC CINCINNATI, OHIO	TITLE	SECTION
	DECAL PLACEMENTS	C400
	ESV-1000 VAN CRANE	ESV115

ITEM NO.	PART NO.	QTY	DESCRIPTION
1	15397	1	BOM; ACCIDENT PREVENTION SIGNS
2	17389-4	1	DECAL; VENTURO (SMALL)
3	15672-1000	2	DECAL; CAPACITY, 1000 LBS
4	CEV326	1	DECAL; MODEL, ESV1000
5	ESV116	1	IDWG; FIELD SERVICE LABEL KIT
6	ESV115	1	IDWG; DECAL PLACEMENT

15397 ACCIDENT PREVENTION SIGNS		
PART NO.	QTY.	DESCRIPTION
15390	1	DECAL; CAUTION, OPERATIONS
15391	1	DECAL; DANGER, NOT PASSENGER LIFT
15392	1	DECAL; DANGER, ELECTRICAL HAZARD SIGN
15393	4	DECAL; DANGER, ELECTRICAL HAZARD
15394	1	APPLICATION INSTRUCTIONS
15398	1	DECAL; UNPLUG PENDANT
15401	1	DECAL; UNLAWFUL TO OPERATE
15513	1	DECAL; MASTER DISCONNECT
22317	1	DECAL SHEET; VENTURO, COMPLEMENTARY
20927	1	DECAL; CRANE STABILITY



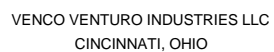
VENCO VENTURO INDUSTRIES LLC
CINCINNATI, OHIO

TITLE
FIELD SERVICE LABEL KIT
ESV-1000 SERIES CRANES

DATE
02-26-19A
SUPERSEDES
02-27-17

SECTION
C400
ESV116

USER NOTES

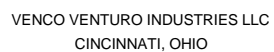


INSTALLATION MANUALS

02-23-16

1.

25431

[illegible]

INSTALLATION MANUALS

02-23-16

1.

■

25431



VENTURO CRANES LIMITED WARRANTY POLICY

Venturo products are built to last...we guarantee them.

As a purchaser of any new Venturo product covered by warranty, you will receive 1 year of the most complete coverage available...and, at no added cost to you.

1-Year Limited Warranty Policy

This limited policy warrants new products of Venturo to be free from defects in material and workmanship for a period of one (1) year from date of original installation. OEM products or accessories purchased by Venturo as part of or offered with our product will carry the OEM manufacturer's respective warranty. Our warranty covers:

- ***Repair or replacement of product***
- ***Labor to repair or replace product***
- ***Freight to return and/or replace product***

We shall not be liable for any contingent liabilities arising out of the improper function of any products. Warranty shall become void if the product is improperly installed, modified, damaged, abused or used for application other than intended use. There is no warranty of merchantability, fitness for a particular purpose, warranty arising from course of dealing or usage of trade, or any other implied or expressed warranty, except as made specifically herein. This warranty supersedes all previous warranties, written or implied.

Warranty Claims

Venco Venturo Industries LLC will make a good faith effort for prompt correction or other adjustment with respect to any product, which proves to be defective after our inspection and within the warranty period. Before any repairs are attempted or before returning any product, your Venturo Distributor is required to obtain a warranty claim number. This number is necessary for any claim to be considered. To obtain a warranty claim number, Venturo requires the model and serial number. Only authorized Venturo Distributors can perform warranty. For the name and address of your local Venturo Distributor call the **Warranty Claim Department - 513-772-8448**.

WARNING - It is the responsibility of the installer to ensure the installation is completed according to the manufacturer's recommendations, ensure the ultimate user understands how to operate product in a safe manner, and understands the need for regular service and maintenance by an authorized Venturo Distributor. No modifications or alterations may be made to any Venturo product without the expressed written consent of Venco Venturo Industries LLC. Installation of any Venturo product must be done by an authorized Venturo Distributor, to the standards of the industry; including maintenance, service and affixing of all instruction, safety and warning decals. Users should be instructed as to the safe operation at time of delivery. Maintenance, service, operation and safety warning decals are available on request from Venco Venturo Industries LLC.

VENCO VENTURO INDUSTRIES LLC
12110 BEST PLACE | CINCINNATI, OHIO 45241
P: 800-226-2238 | F: 513-326-5427
www.venturo.com